

# 1,840 SF FOR SALE OR LEASE

2730 SAN PEDRO DR NE

FOR SALE  
OR LEASE



## FOR SALE/LEASE

### SALE PRICE

- » \$236,800
- » \$128.70/SF

### FOR LEASE

- » \$14.80/SF
- » Full Service, excluding janitorial

## FEATURES

- » Great Uptown location with easy access to all of Uptown's amenities
- » Plenty of parking
- » Existing layout includes a reception area, 7 offices, a conference room, a break room, and 2 restrooms

## CONTACT

### SCOTT THROCKMORTON, SIOR

- ✉ scott@argusinvestmentrealty.com
- ☎ 505.855.7602

### STACEY NENNINGER, CCIM

- ✉ stacey@argusinvestmentrealty.com
- ☎ 505.855.7608

FOR SALE OR LEASE | 2730 SAN PEDRO DR NE, ALBUQUERQUE, NM 87110

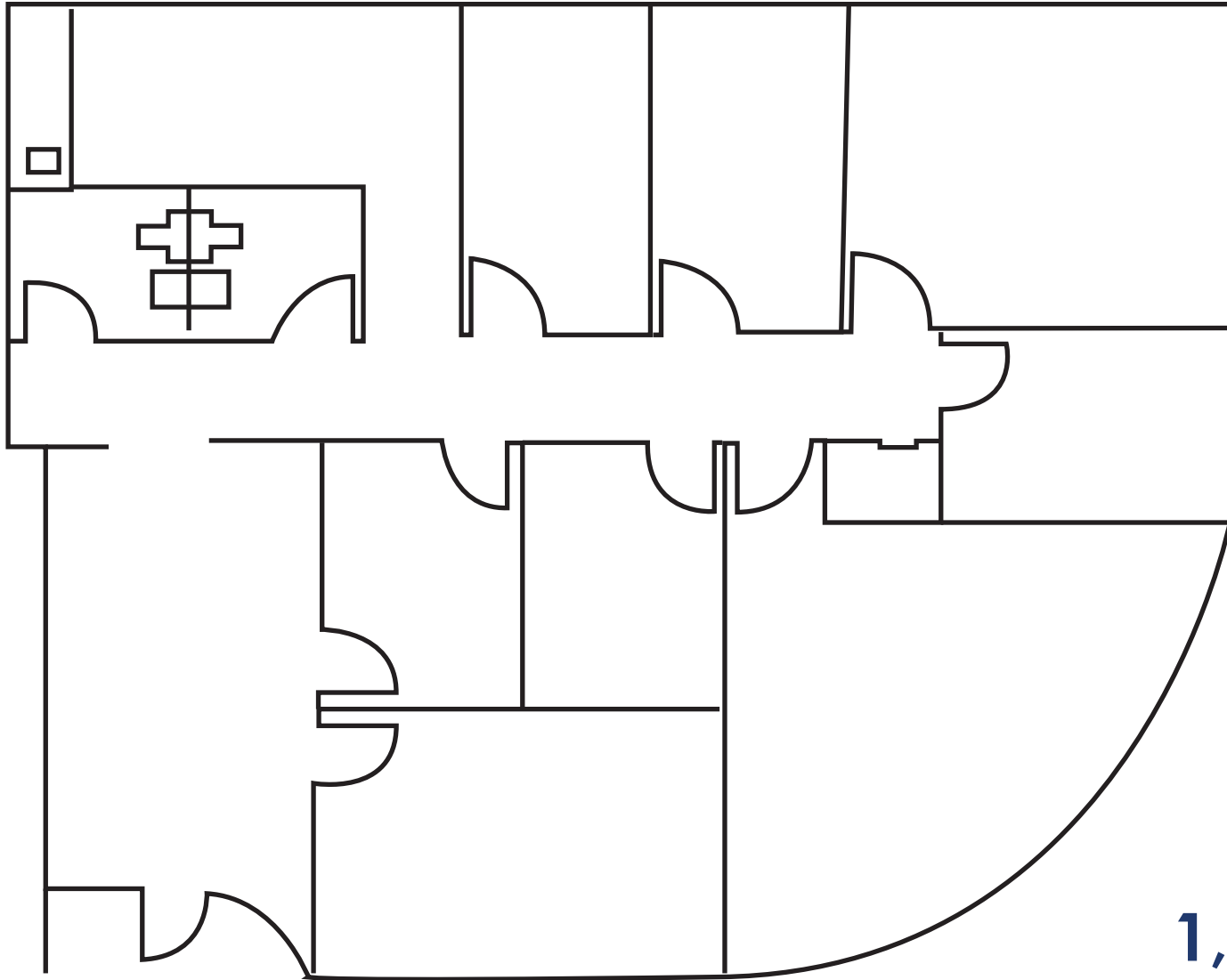
ARGUSINVESTMENTREALTY.COM



# 1,840 SF FOR SALE OR LEASE

2730 SAN PEDRO DR NE

FOR SALE  
OR LEASE



1,840 SF

FOR SALE OR LEASE | 2730 SAN PEDRO DR NE, ALBUQUERQUE, NM 87110

ARGUSINVESTMENTREALTY.COM



# 1,840 SF FOR SALE OR LEASE

2730 SAN PEDRO DR NE

FOR SALE  
OR LEASE



FOR SALE OR LEASE | 2730 SAN PEDRO DR NE, ALBUQUERQUE, NM 87110

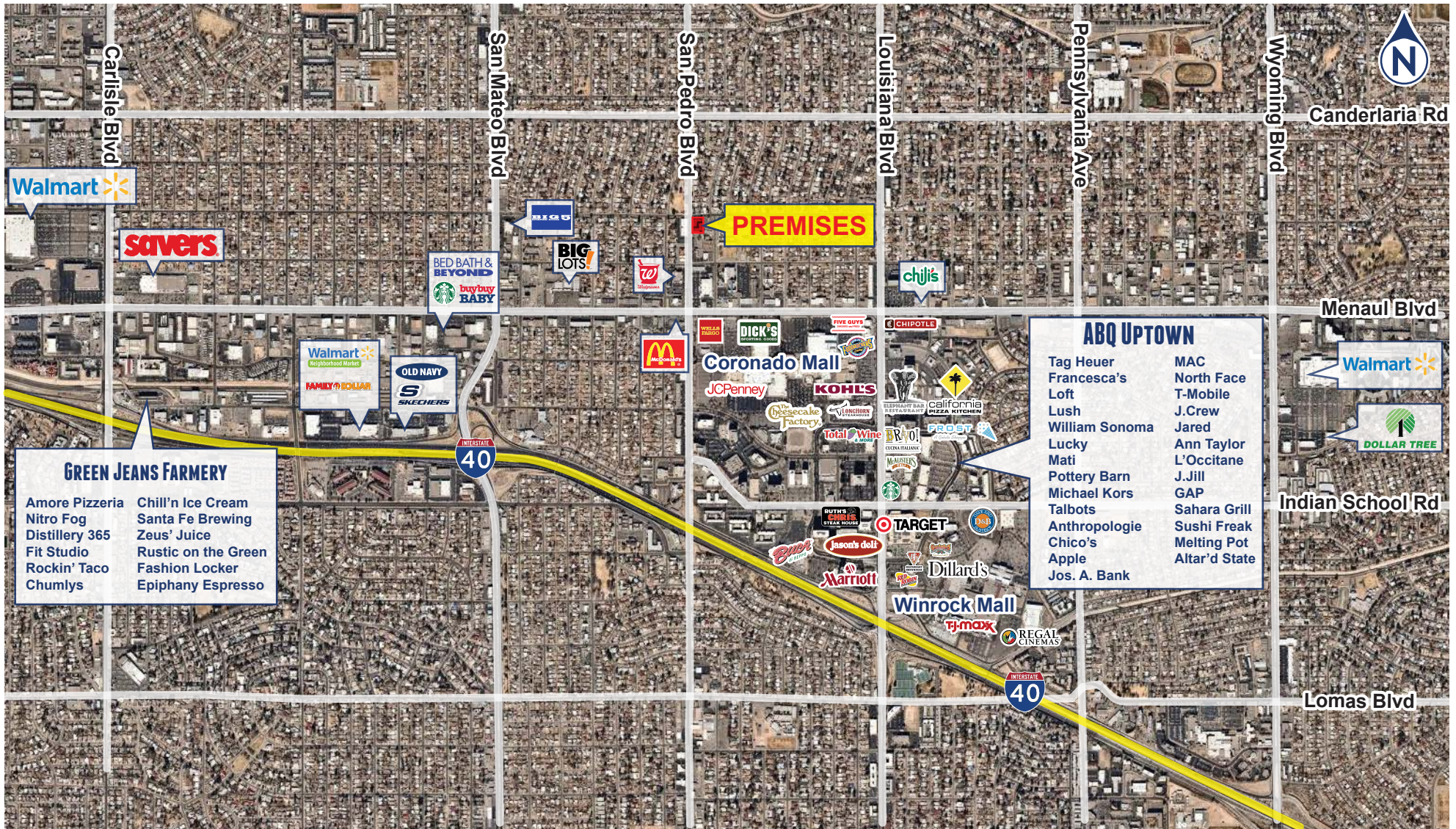
[ARGUSINVESTMENTREALTY.COM](http://ARGUSINVESTMENTREALTY.COM)



# 1,840 SF FOR SALE OR LEASE

2730 SAN PEDRO DR NE

FOR SALE  
OR LEASE



FOR SALE OR LEASE | 2730 SAN PEDRO DR NE, ALBUQUERQUE, NM 87110

ARGUSINVESTMENTREALTY.COM



# 1,840 SF FOR SALE OR LEASE

2730 SAN PEDRO DR NE

FOR SALE  
OR LEASE

## Population Drive Times

### 5 MINUTE

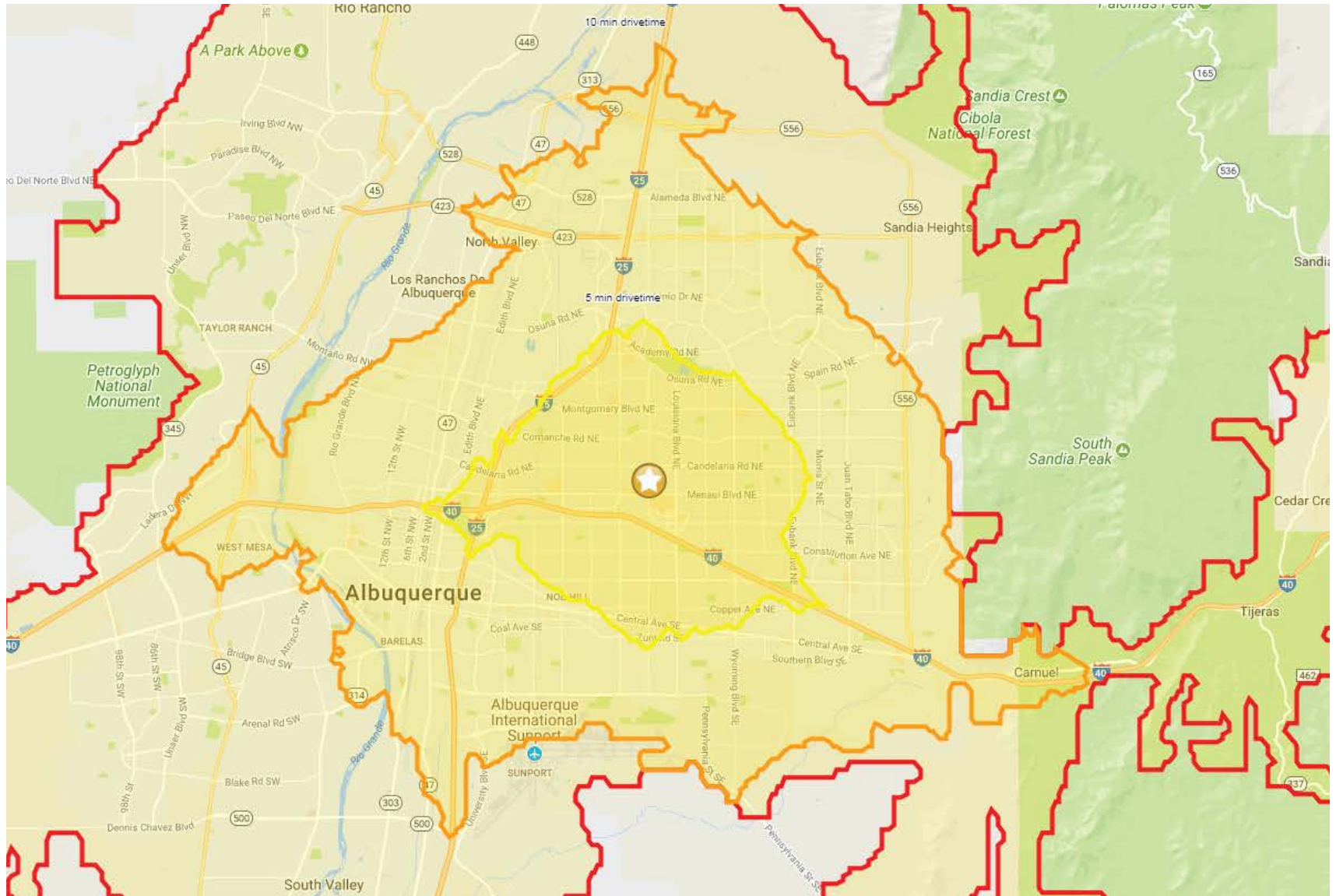
Population  
104,902  
Avg HH  
Income  
\$58,942

### 10 MINUTE

Population  
338,850  
Avg HH  
Income  
\$66,704

### 15 MINUTE

Population  
702,849  
Avg HH  
Income  
\$73,197



FOR SALE OR LEASE | 2730 SAN PEDRO DR NE, ALBUQUERQUE, NM 87110

ARGUSINVESTMENTREALTY.COM

