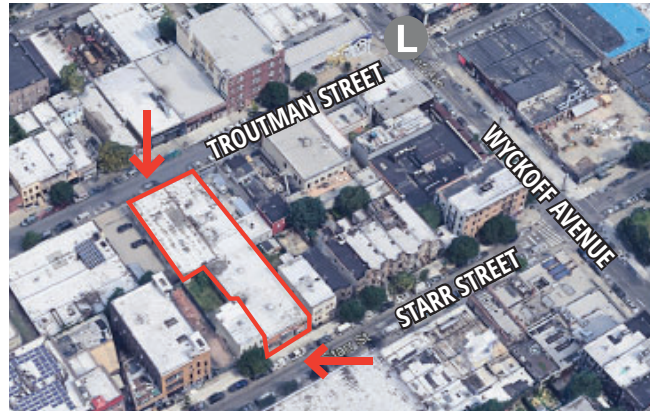
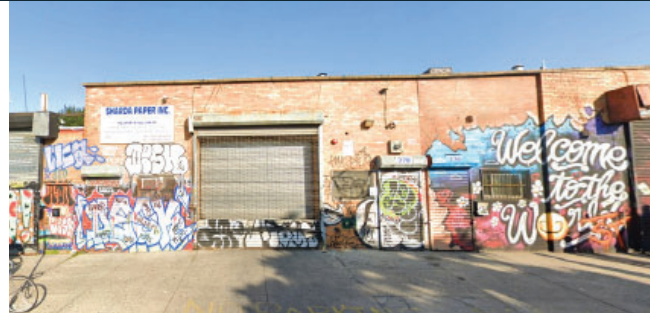


STREET-TO-STREET WAREHOUSE AVAILABLE IN BUSHWICK

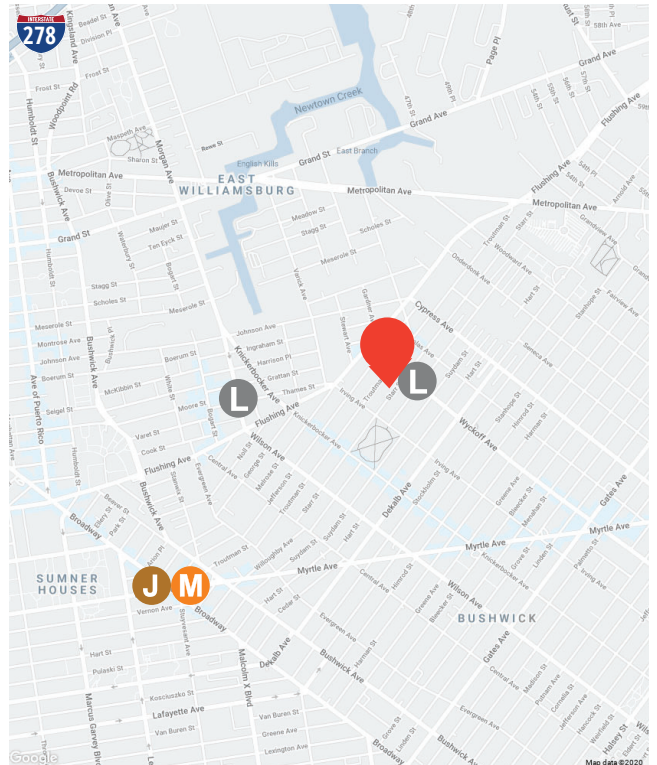
378 TROUTMAN STREET, BROOKLYN, NY 11237



AVAILABLE IMMEDIATELY - DIVISIONS CONSIDERED

FEATURES

- STREET-TO-STREET ACCESS (STARR & TROUTMAN STREETS)
- ± 8,500 SF GROUND FLOOR WAREHOUSE
- ZONED M1-1
- 16' CEILING HEIGHTS
- NO COLUMNS - CLEAR SPAN
- 2 LARGE DRIVE-IN DOORS (14' X 12')
- GAS HEAT
- WET SPRINKLER SYSTEM
- WITHIN WALKING DISTANCE TO **L** TRAIN AT JEFFERSON STREET



CONTACT

KYLE MALTZ
Licensed R.E. Salesperson
(718) 786-5050
kmaltz@greiner-maltz.com

DREW MALTZ
Licensed R.E. Salesperson
(718) 786-5050
dmaltz@greiner-maltz.com

GREINER-MALTZ

REAL ESTATE

Creating Opportunities Together

WWW.GREINER-MALTZ.COM