



## STADIUM COMMONS - OFFICE SPACE

Located directly off of the highly trafficked South Memorial Parkway in Huntsville, Stadium Commons is the first phase of a future mixed-use development that features office space, retail, food & beverage, and is part of a larger development that includes multi-family and an on-site hotel. The site is very visible and sees an estimated 120,809 vehicles per day in passing. It's also within close proximity to numerous residential neighborhoods and Downtown Huntsville's main business district.

### **CRUNKLETON COMMERCIAL REAL ESTATE:**

Wesley Crunkleton, CPM - 256.536.8809

Eric St. John, CCIM - 256.384.7603

Walker Purvis - 256.384.7606



**CRUNKLETON**  
COMMERCIAL REAL ESTATE GROUP





# AREA MAP



# PROPERTY HIGHLIGHTS

## LOCATION

3312 S Memorial Pkwy  
Huntsville, AL 35801

## SPACE AVAILABLE

Building A - Approx. 16,000 SF (divisible)  
Building F - Approx. 10,000 SF (divisible)

## PRICE

Call for pricing info.

- Office suites ranging from 1,600 SF up to 16,000 SF.
- Highly visible signage opportunity.
- Walkable to Huntsville's new Wicks Family Soccer Field at Joe Davis Stadium, numerous restaurants, and shopping options.
- Outdoor patio space opportunities.
- Site offers covered parking garage for tenants and visitors.
- Located in a HUBZone.
- Incredible ceiling height and lots of natural light.

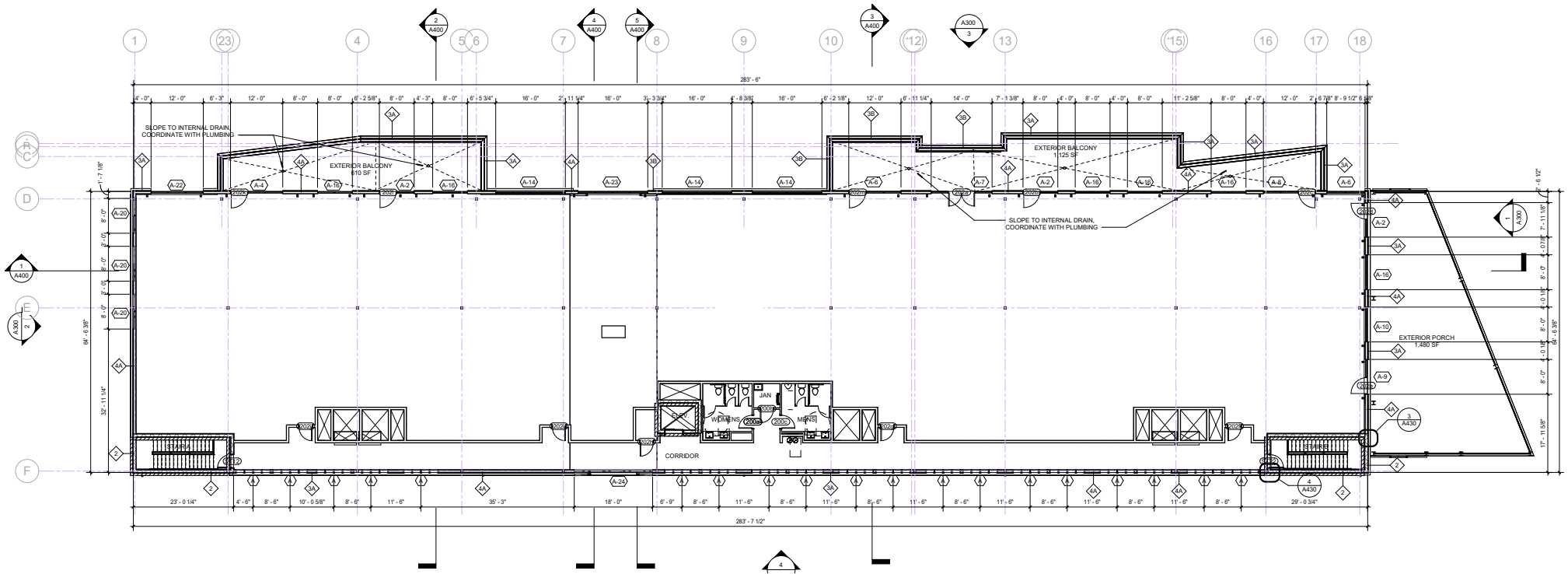
## STADIUM COMMONS

Located directly off of the highly trafficked South Memorial Parkway in Huntsville, Stadium Commons is a future mixed-use development that features retail and food & beverage, and is part of a larger development that includes multi-family and an on-site hotel.





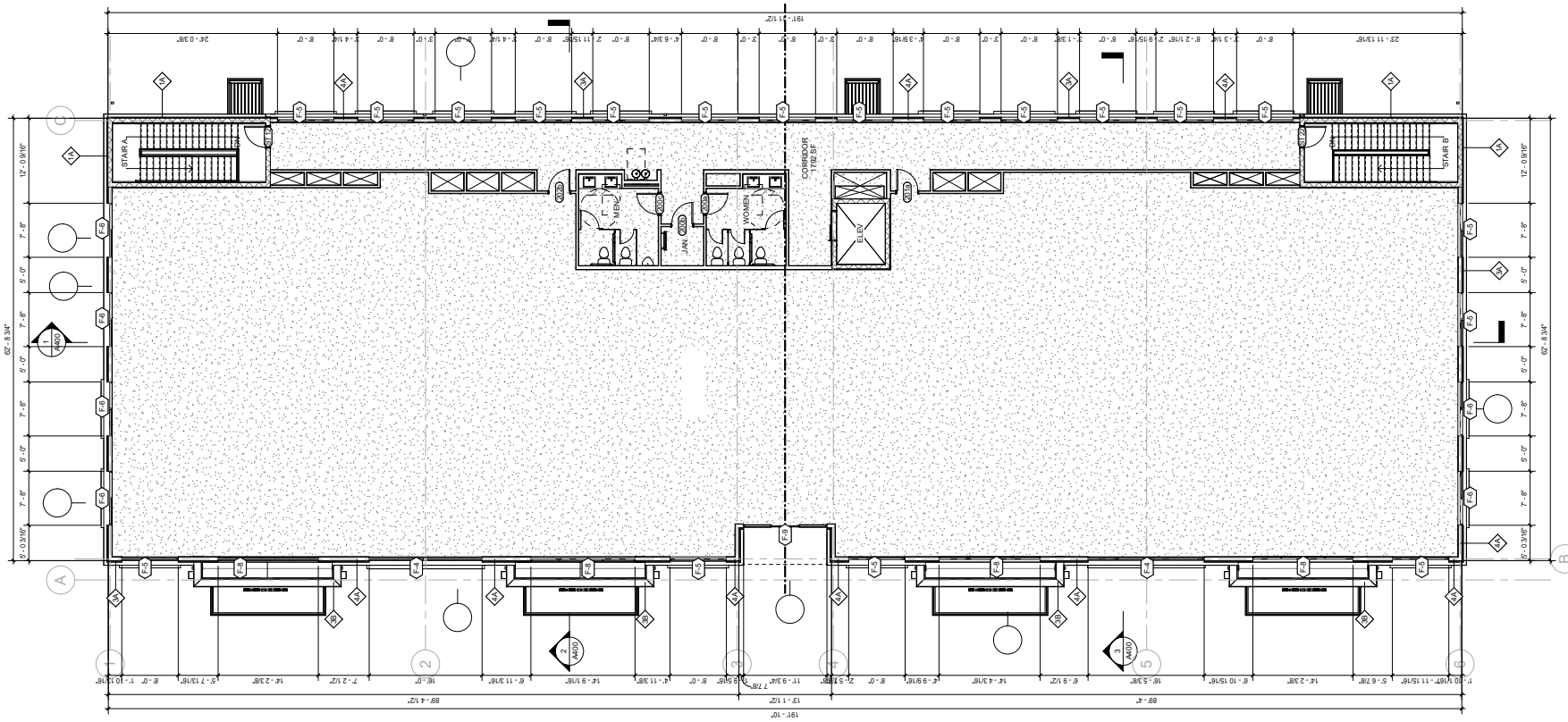




**BUILDING A - SECOND FLOOR**  
 Approx. 16,000 SF

# BUILDING A - SECOND FLOOR





**BUILDING F - SECOND FLOOR**  
 Approx. 10,000 SF

# BUILDING F - SECOND FLOOR



# CRUNKLETON

COMMERCIAL REAL ESTATE GROUP

**WESLEY CRUNKLETON, CPM**  
wesley@crunkletonassociates.com  
256.536.8809

**ERIC ST. JOHN, CCIM**  
eric@crunkletonassociates.com  
256.384.7603

**WALKER PURVIS**  
walker@crunkletonassociates.com  
256.384.7606