

TRUEMAN BOULEVARD HILLIARD, OH 43026



LAND FOR SALE

+/- 1-22 Acres Available

LAND WITH FREEWAY VISIBILITY

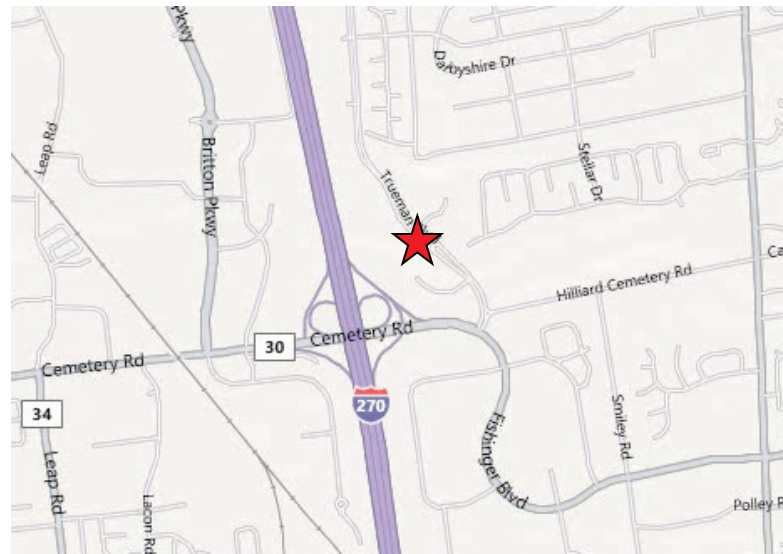


PROPERTY OVERVIEW

- +/- 1-22 acres of Land Available with Freeway Visibility
- PUD Zoning calls for office, retail, medical, daycare and religious uses
- Build to Suit Opportunities Available

OVERVIEW

TOTAL AVAILABLE	1-22 Acres
SALE PRICE	Negotiable



For more information, please contact:

JIM HENDRIX, CCIM
Senior Vice President
(614) 883 1095
jhendrix@continental-realty.com

BRENT STAMM, CCIM
Senior Vice President
(614) 883 1141
bstamm@continental-realty.com

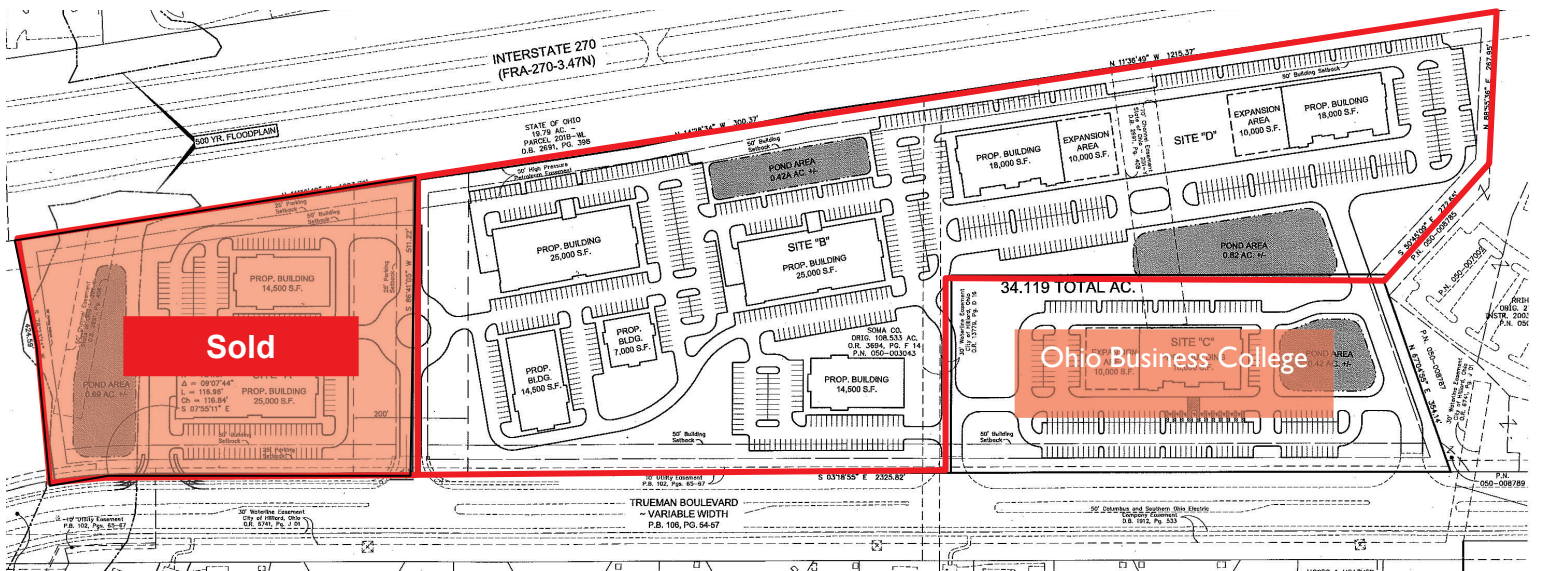
**CONTINENTAL REALTY /
CUSHMAN & WAKEFIELD ALLIANCE**
150 E. Broad Street, Suite 500
Columbus, OH 43215
www.continental-realty.com

The depiction in the included photograph of any person, entity, sign, logo or property, other than Continental Realty's (CR) client and the property offered by CR, is incidental only, and is not intended to connote any affiliation, connection, association, sponsorship or approval by or between that which is incidentally depicted and CR or its client. This listing shall not be deemed an offer to lease, sublease or sell such property; and, in the event of any transaction for such property, no commission shall be earned by or payable to any cooperating broker except if otherwise provided pursuant to the express terms, rates and conditions of CR's agreement with its principal, if, as and when such commission (if any) is actually received from such principal. (A copy of the rates and conditions referred to above with respect to this property is available upon request.)

TRUEMAN BLVD.

Land for Sale

1-22 Acres
AVAILABLE



For more information, please contact:

JIM HENDRIX, CCIM

Senior Vice President

(614) 883 1095

jhendrix@continental-realty.com

BRENT STAMM, CCIM

Senior Vice President

(614) 883 1141

bstamm@continental-realty.com

**CONTINENTAL REALTY /
CUSHMAN & WAKEFIELD ALLIANCE**

150 E. Broad Street, Suite 500

Columbus, OH 43215

www.continental-realty.com

The depiction in the included photograph of any person, entity, sign, logo or property, other than Continental Realty's (CR) client and the property offered by CR, is incidental only, and is not intended to connote any affiliation, connection, association, sponsorship or approval by or between that which is incidentally depicted and CR or its client. This listing shall not be deemed an offer to lease, sublease or sell such property; and, in the event of any transaction for such property, no commission shall be earned by or payable to any cooperating broker except if otherwise provided pursuant to the express terms, rates and conditions of CR's agreement with its principal, if, as and when such commission (if any) is actually received from such principal. (A copy of the rates and conditions referred to above with respect to this property is available upon request.)