

Cash Flow Investment Property

501 Silo Hill Parkway | Emmitsburg | MD |

VCRE.CO



Four Self Serve Car Wash Bays, One Automatic Car Wash, Multiple Vacuum Cleaning Stations on .75 acres (sell is subject to recordation of a subdivision plat for the subject property). Like new and well established car wash conveniently located off Rt 15. Also available, 4 bay self service car wash in Thurmont, would make an ideal pairing. Owner is offering training and will provide 1yr of preventive maintenance.



Office: 240.367.9600 | Fax: 240.668.6822 | 1845 Brookfield Ct. | Frederick, MD 21701

Tony "C" Checchia

301.471.8669 (Tony) mobile

TonyC@vcre.co

240.367.9600

501 Silo Hill Parkway

Emmitsburg, MD

VCRE.CO

Property Address: 501 Silo Hill Parkway
Emmitsburg, MD

Zone: B2

Lot Size: .75 acres

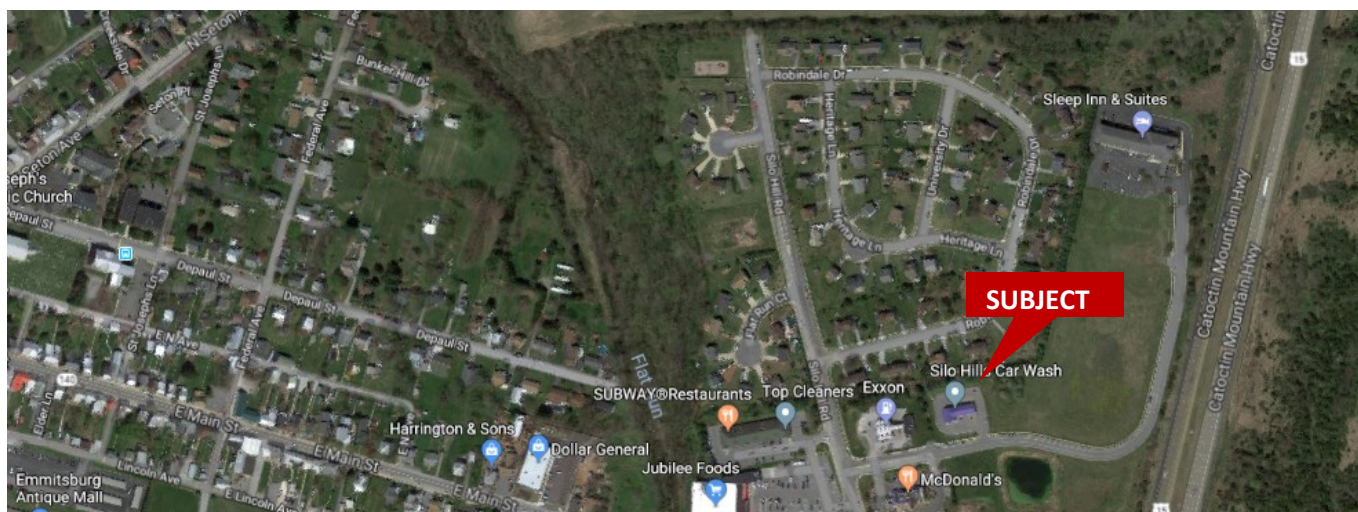
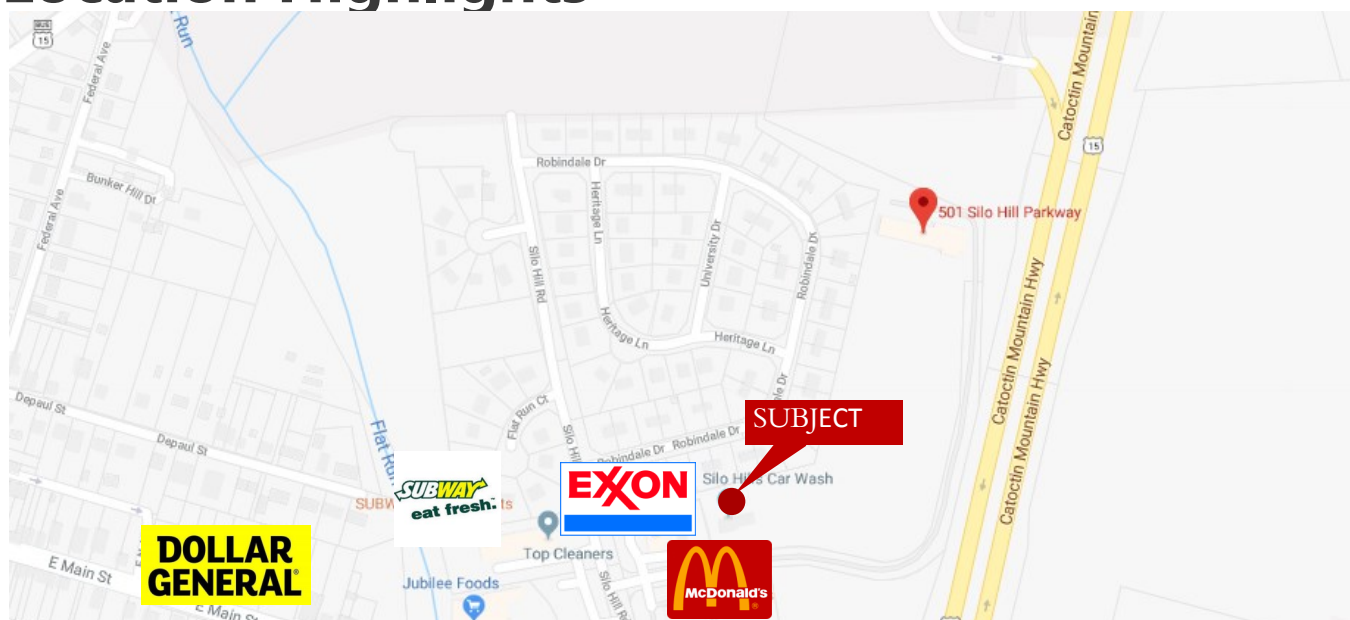
Built: 2001

Incentives: Owner will train and 1yr
Preventive maintenance.

Convenient Location: Off Rt. 15, near E Main St.



Location Highlights



(sell is subject to recordation of a subdivision plat for the subject property)

Disclaimer: Information obtained from sources deemed to be reliable. However, we make no guarantee, warranty or representation. Information, prices, and other data may change without notice.