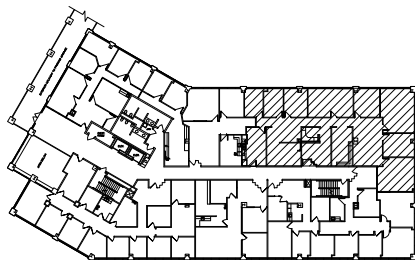


**SUITE #235**

DATE: 12.12.17

N.T.S.



KEY PLAN

4,074 RSF



M C C A R T H Y  
 Architectural Interiors  
 2850 East Camelback Road  
 Suite 250  
 Phoenix, Arizona 85016  
 Telephone 602.955.4499  
 Facsimile 602.955.4599  
 N O R D B U R G

**5080 BUILDING**  
 5080 NORTH 40TH STREET  
 PHOENIX, ARIZONA

**Camroad Properties**

Contact: Portia Dempsey  
 Office: (602) 956-2200  
 Fax: (602) 956-1503