

**4,700 SF  
AVAILABLE  
FOR LEASE  
(DIVISIBLE)**

**5076 SANTA FE STREET  
SAN DIEGO, CA 92109**

5076 SANTA FE STREET, SUITES D, E & F, SAN DIEGO, CALIFORNIA 92109

**4,700 SF**  
AVAILABLE FOR LEASE  
(DIVISIBLE)

DROPPED CEILING  
THROUGHOUT WITH HVAC

2 GRADE LEVEL ROLL-UP  
DOORS (10; X 12')

LARGE 22' X 17'  
CONFERENCE ROOM

LARGE BREAKROOM

3 RESTROOMS

4 PRIVATE OFFICES WITH  
BALANCE OPEN AREA

ZONING: IP-2-1

OFF-STREET PARKING

CLOSE TO INTERSTATE  
I-5 ON-RAMP

LEASE RATE: \$1.50

AVAILABLE: JANUARY 1, 2021



**1,500 SF**

SUITE D

**1,600**

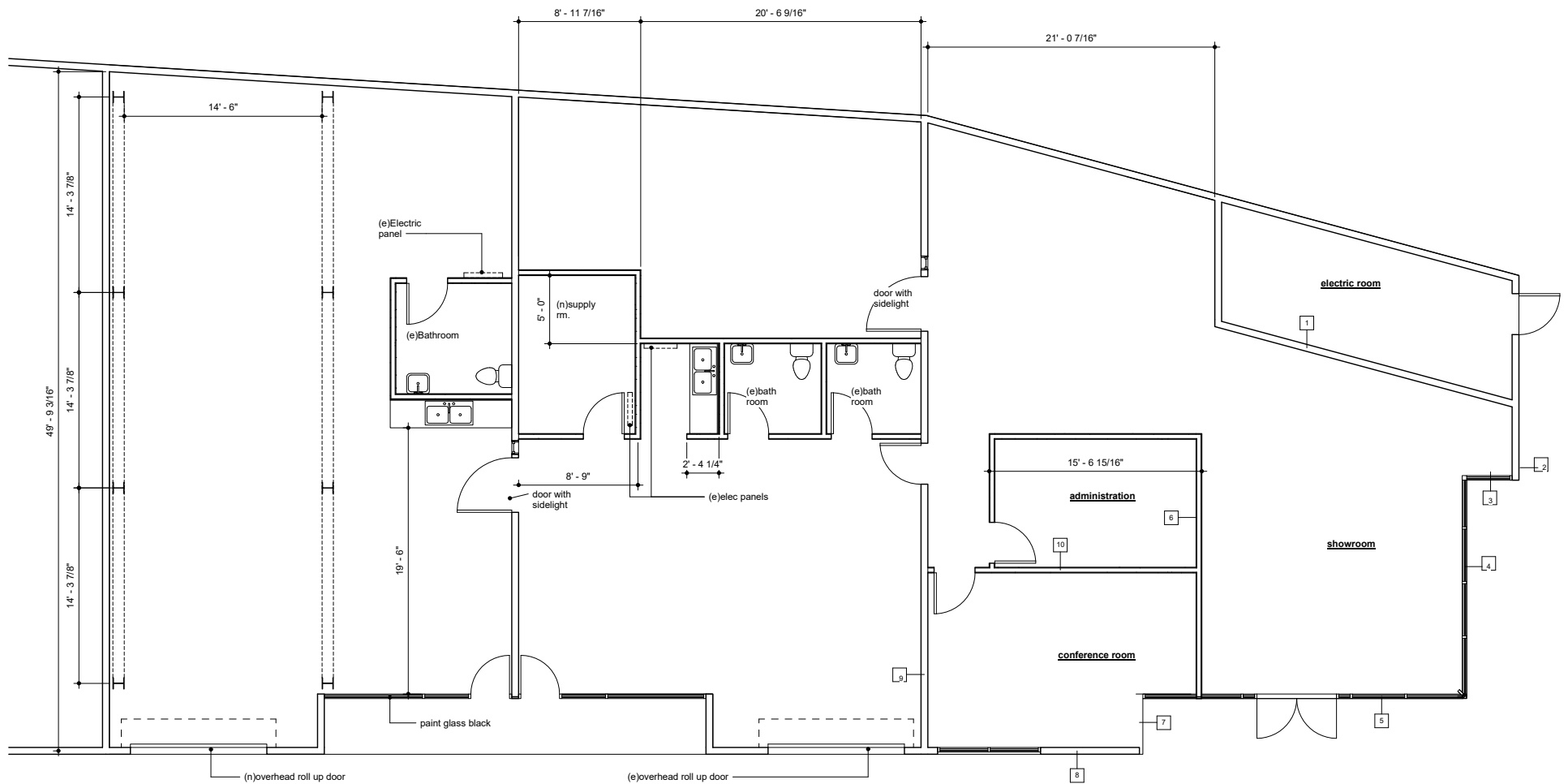
SUITE E

**1,600**

SUITE F

# 4,700 SF

AVAILABLE FOR LEASE  
(DIVISIBLE)





REX A. HUFFMAN | Vice President/Partner | 858.458.3360 | rhuffman@voitco.com | Lic. #00648675

4180 La Jolla Village Drive, Suite 100, La Jolla, CA 92037 | 858.453.0505 | 858.408.3976 Fax | Lic #01991785 | www.voitco.com

Licensed as a Real Estate Salesperson by the DRE. The information contained herein has been obtained from sources we deem reliable. While we have no reason to doubt its accuracy, we do not guarantee it. ©2020 Voit Real Estate Services. All Rights Reserved.

**Voit**  
REAL ESTATE SERVICES

# COVID-19 PROPERTY TOURING PLAN

Voit Real Estate Services is committed to following the guidelines and protocols issued by Department of Real Estate, the Centers for Disease Control and Prevention (CDC), Federal, State, County and/or City Governments. The following guidelines will be adhered to when interacting with our clients and conducting tours.

## Safety Protocols

### MONITORING AND REPORTING

Brokers and Clients will be responsible to closely monitor their health, which will include daily temperature checks.



Brokers and Clients are required to avoid tours if:

- ✓ You have tested positive for COVID-19 and/or have been told by a medical professional to self-quarantine, due to illness or exposure to COVID-19
- ✓ You have recently traveled to any high-risk countries
- ✓ You are currently experiencing any flu-like signs or symptoms of COVID-19 including:
  - Cough
  - Shortness of breath or difficulty breathing
  - Fever (temperature of  $100^\circ$  F or higher)
  - Chills
  - Repeated shaking
  - Muscle pain
  - Headache
  - Sore throat
  - Loss of taste or smell

### CLEANING PROTOCOLS

- Each space will be cleaned prior to a showing, with commonly used surfaces and high-touch items disinfected before and after
- All people entering the space must wash hands with soap and water, or use hand sanitizer immediately upon entry, before touring or inspecting the property
- Each site will be equipped with necessary products, including hand sanitizer and disinfecting wipes
- All parties involved in the tour will avoid touching surfaces whenever possible
- Fresh air will be introduced, by opening doors and windows, weather permitting



## SOCIAL DISTANCING

Voit Real Estate Services will respect fellow Brokers and Clients by maintaining social distancing guidelines.

Voit will promote social distancing as follows:

- Utilize virtual tours when possible
- Maintain a distance of at least 6 feet or more between people
- Use appointment times to limit the number of people on a tour
- Avoid handshakes and similar greetings that break social distancing
- Avoid passing transaction materials such as pens, paper and keys
- Complete all transactions digitally when feasible
- Refrain from and discourage shared vehicle trips



## FACE COVERINGS

The use of face coverings is required under the following circumstances:

- When touring in close proximity with others, especially in hallways, stairways, elevators and parking facilities
- In any room or enclosed area where other people are unable to socially distance
- Wherever required by the DRE, Federal, State, County and/or City guideline

Voit asks that you follow standard protocols to use your face covering effectively:

- Do not share face coverings
- Face covering should cover both the nose and the mouth
- Replace or wash your face covering daily



## Enforcement

Voit will be doing everything possible to follow the guidelines and protocols issued by The Centers for Disease Control and Prevention (CDC), Federal, State, County and City Governments. While we understand that not all will agree with these new guidelines, they must be adhered to for the safety of all involved and for legal compliance.

**If you have questions or concerns about these guidelines,  
please contact your Broker immediately, or feel free to contact  
Human Resources at (714) 935-2316.**