

UNIT **3130**
WESTFIELD UTC

4303 LA JOLLA VILLAGE DRIVE

12,838 SF



CONTACT

MIKE HOECK

Lic. 01386247

+1 858 646 4700

mike.hoeck@cbre.com

Westfield

CBRE



**TRUE
LIVE
WORK
PLAY**

HIGHLIGHTS

A WORLD CLASS

mixed use project in the heart of San Diego County

VALET and **SELF PARKING** available for employees and customers

Surrounded by **OVER 200 RETAILERS** and **RESTAURANTS**

UNIQUE OFFICE SPACE

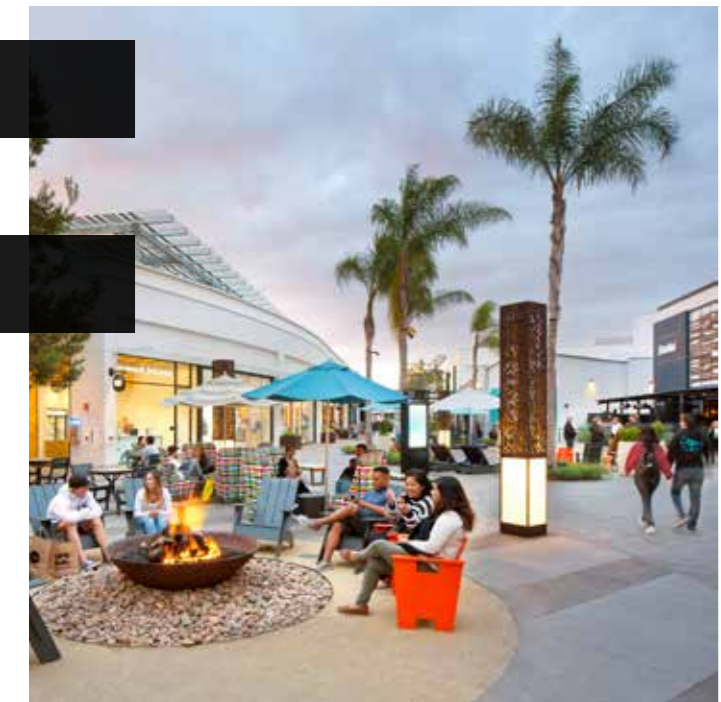
Located in Westfield UTC with abundant natural light

An incredible **SIGNAGE** opportunity **ON THE MAIN PROMENADE**

Operable windows with **PRIVATE PATIO** for fresh air

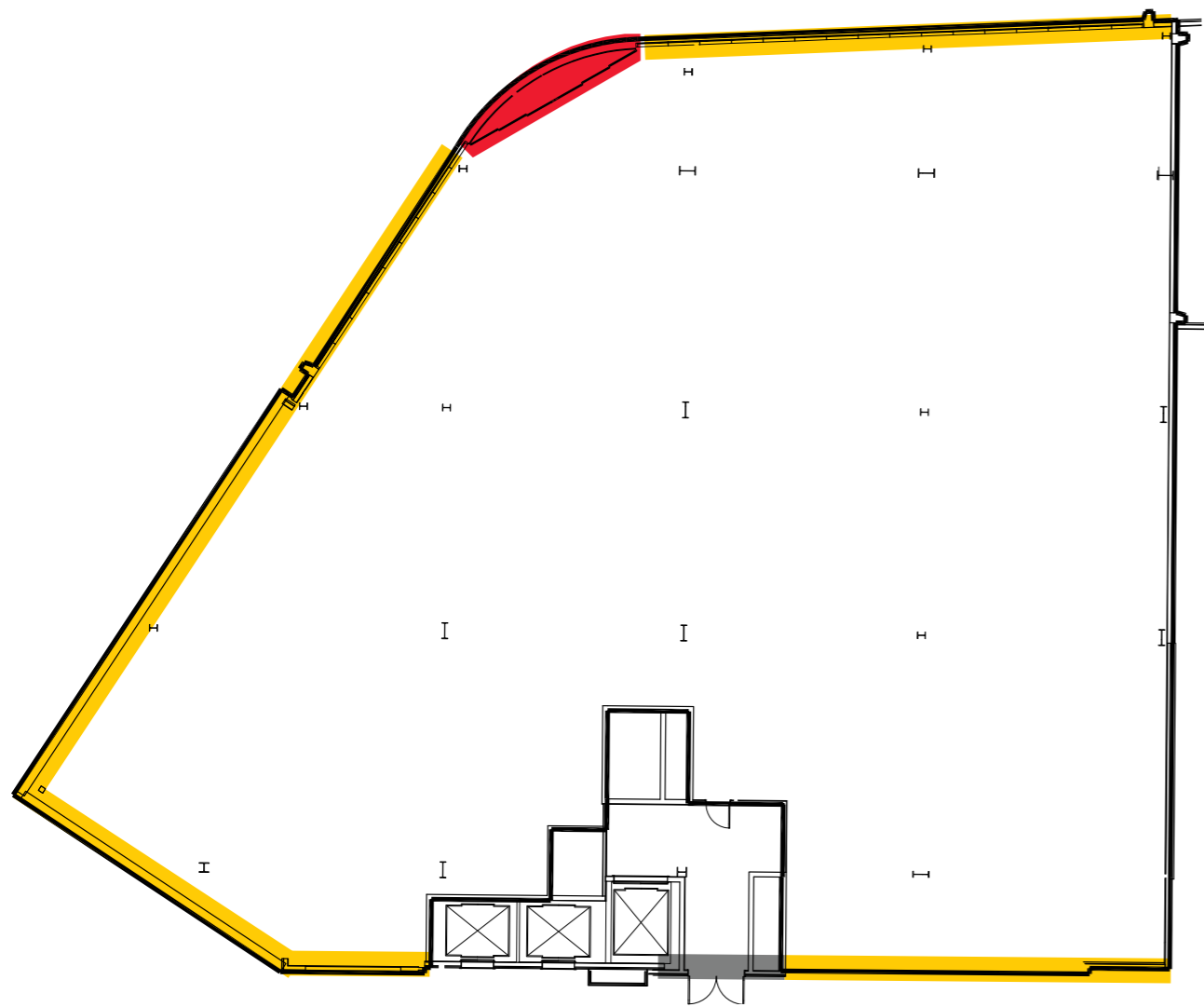
CBRE

Westfield



NOTABLE WESTFIELD UTC RETAILERS





- Window Line
- Balcony/Patio
- Entrance

FLOOR PLAN



SITE PLAN





UNIT 3130
WESTFIELD UTC

4303 LA JOLLA VILLAGE DRIVE

© 2018 CBRE, Inc. All rights reserved. This information has been obtained from sources believed reliable, but has not been verified for accuracy or completeness. Any projections, opinions, or estimates are subject to uncertainty. The information may not represent the current or future performance of the property. You and your advisors should conduct a careful, independent investigation of the property and verify all information. Any reliance on this information is solely at your own risk. CBRE and the CBRE logo are service marks of CBRE, Inc. and/or its affiliated or related companies in the United States and other countries. All other marks displayed on this document are the property of their respective owners. Photos herein are the property of their respective owners and use of these images without the express written consent of the owner is prohibited.

CONTACT

MIKE HOECK

Lic. 01386247

+1 858 646 4700

mike.hoeck@cbre.com

CBRE *Westfield*
Broker Lic. 00409987