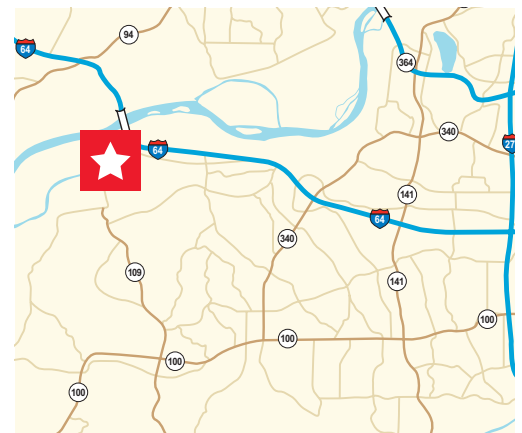




Sale Price: \$7.25/SF (\$1,882,000)

Property Highlights

- Next to the proposed Chesterfield Sports Complex
- Extensive frontage on I-64 / Highway 40
- All utilities available to site
- More than two million square feet of retail, service and commercial development in Chesterfield Valley area
- Over 86,000 vehicles per day on I-64 / Highway 40
- Proximity to Spirit of St. Louis Airport
- Ideal for hotel, retail, office, or mixed use



For more information, contact:

Hassan Jadali, CCIM, SIOR
Senior Vice President
+1 314 746 0370
hassan.jadali@cushwake.com

7700 Forsyth Boulevard, Suite 1210
St. Louis, Missouri 63105

T: +1 314 862 7100

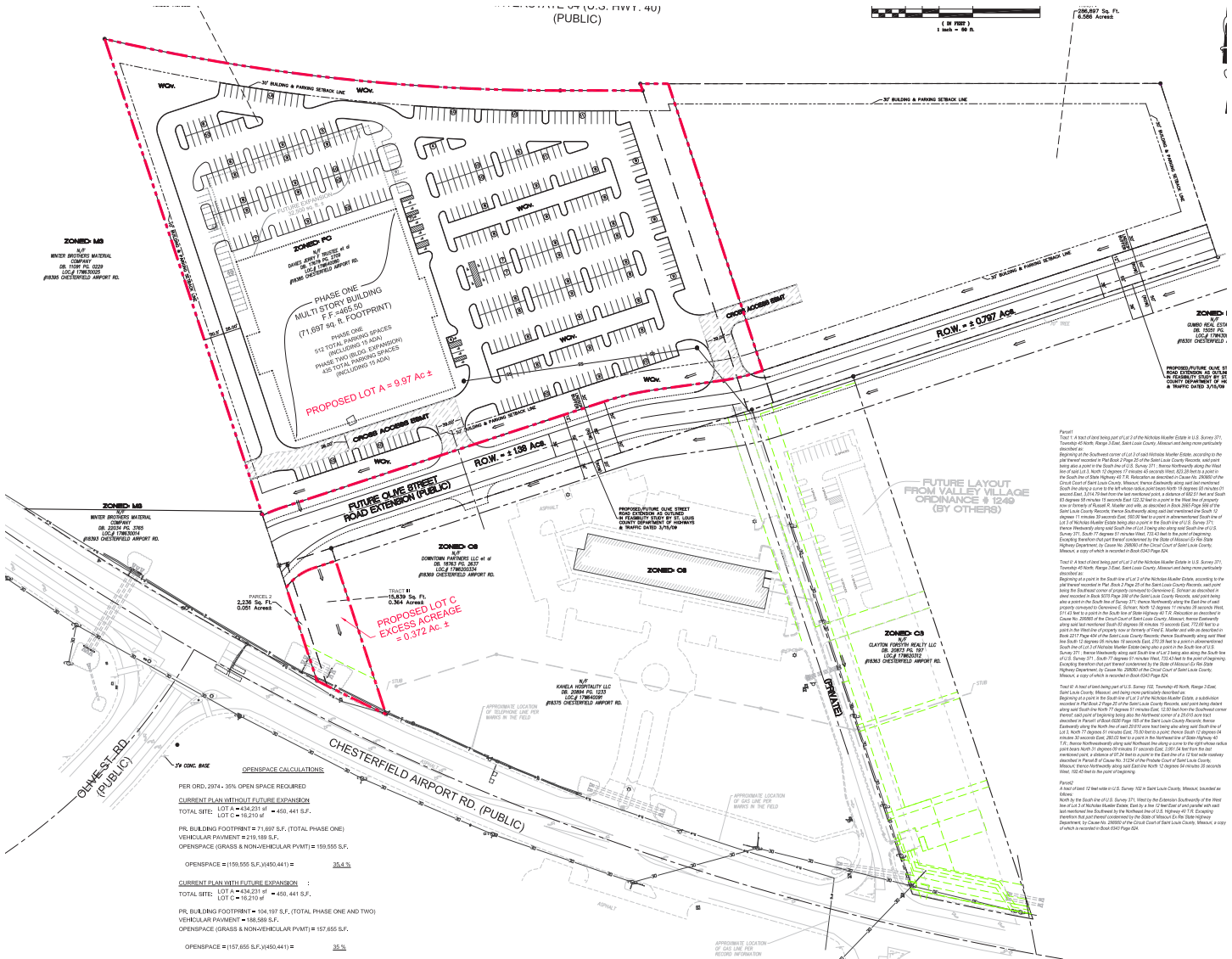
cushmanwakefield.com



CUSHMAN & WAKEFIELD

FOR SALE
18379 Chesterfield Airport Road
Chesterfield, Missouri

Proposed Site Plan



For more information, contact:
Hassan Jadali, CCIM, SIOR
Senior Vice President
 +1 314 746 0370
 hassan.jadali@cushwake.com

7700 Forsyth Boulevard, Suite 1210
 St. Louis, Missouri 63105
 T: +1 314 862 7100
 cushmanwakefield.com



SITE

ST. LOUIS
PREMIUM
OUTLETS
MALL

Missouri River

TAUBMAN PRESTIGE
OUTLETS MALL

Chesterfield Airport Rd

64

Spirit of
St. Louis Airport

Chesterfield Commons

Long Rd

Gordmans
THE FURNITURE
STORE
ALDI

PETSMART
LOWE'S
SAM'S CLUB
BEST BUY

Michaels
Walmart

BIG LOTS
GOLF GALAXY
DICK'S SPORTING GOODS
TARGET

64

Wild Horse Creek Rd

Chesterfield

Chesterfield
MALL
SEARS
Dillard's
macy's

Schottler Rd

TRADER JOE'S

Baxter Rd

Clarkson Rd

5.96 Acres in Chesterfield Valley