



108 Galbert

108 Galbert Rd, Lafayette, Louisiana 70506

Property Highlights

- ±24,985 Total SF
- 2.5 Acres, 1.25 stabilized
- 10 Offices
- Conference and Training Room
- IT and Copy Room
- 2 Cranes

Sale Price

\$899,000



For more information

Clinton Shepard, CCIM

O: 337 233 9541 | C: 318 366 6064
cshepard@latterblum.com

Jeremy Harson, CCIM

O: 337 233 9541 | C: 337 298 4149
jeremyharson@latterblum.com

CALL OR EMAIL FOR MORE INFORMATION

NO WARRANTY OR REPRESENTATION, EXPRESS OR IMPLIED, IS MADE AS TO THE ACCURACY OF THE INFORMATION CONTAINED HEREIN, AND THE SAME IS SUBMITTED SUBJECT TO ERRORS, OMISSIONS, CHANGE OF PRICE, RENTAL OR OTHER CONDITIONS, PRIOR SALE, LEASE OR FINANCING, OR WITHDRAWAL WITHOUT NOTICE, AND OF ANY SPECIAL LISTING CONDITIONS IMPOSED BY OUR PRINCIPALS NO WARRANTIES OR REPRESENTATIONS ARE MADE AS TO THE CONDITION OF THE PROPERTY OR ANY HAZARDS CONTAINED THEREIN ARE ANY TO BE IMPLIED. LICENSED IN LOUISIANA.

6 Degaulle Square
Lafayette, LA 70508
337 233 9541 tel
latterblum.com

January 04, 2021



| | |
|----------------|-------------------------------|
| SALE PRICE: | \$899,000 |
| LOT SIZE: | 2.454 Acres |
| BUILDING SIZE: | 26,050 SF |
| ZONING: | Light Industrial |
| CRANES: | 1 - 5 Ton 1 - 10 Ton |
| HOOK HEIGHT: | 18' (10 Ton) 12.5' (5 Ton) |
| EAVE HEIGHT: | 25' and 19' |

Property Overview

The subject property for sale is an industrial office-warehouse building situated on approximately 2.5 acres. The office portion spans approximately 6,000 square feet and consists of a reception/waiting area, 10 offices, conference room, training room, IT and copy room, full kitchen, and 3 restrooms. The shop area makes up approximately 12,140 SF and contains office, a restroom, air conditioned storage area and 7 overhead doors. The shop has tall ceilings with 19-25' eaves, two levels, a 5-ton and 10 ton-crane with varying hook heights. This property has a paved parking lot in the front and a fully fenced yard, 1.25 acres of which is stabilized.

Location Overview

The subject is located on Galbert Rd near Cameron St, and just south of I-10. This location is great for servicing a customer base along I-10, north on I-49 and interior to Lafayette.

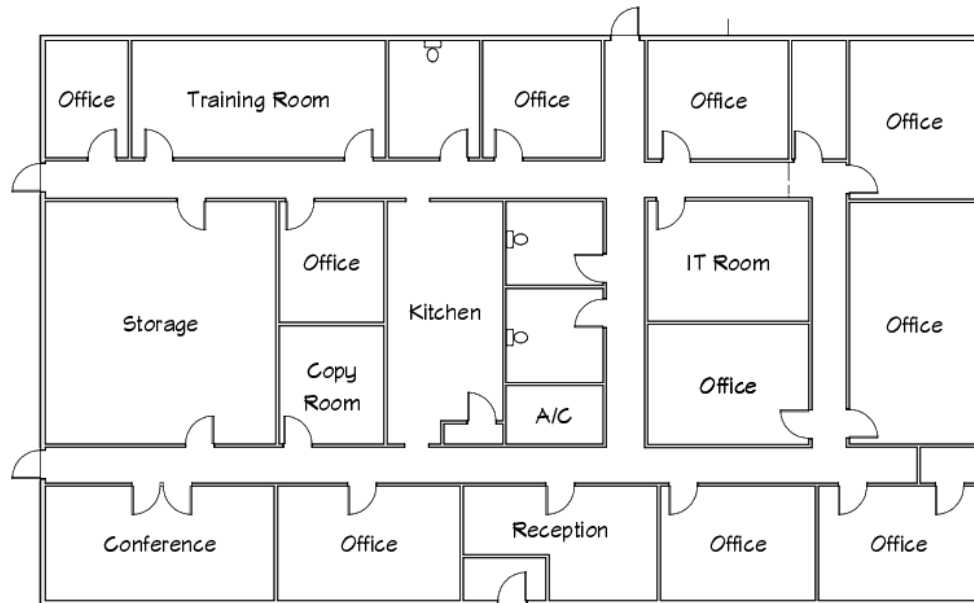
Additional Photos



Additional Photos

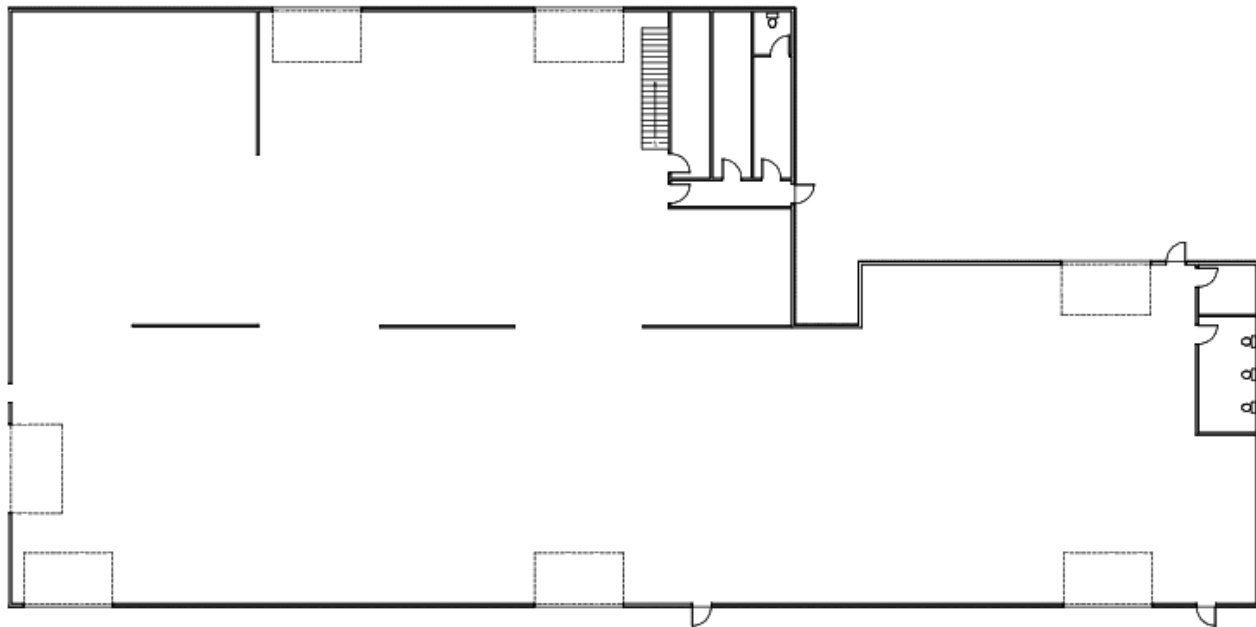


Floor Plan



Office Area

For illustration purposes only, not to scale

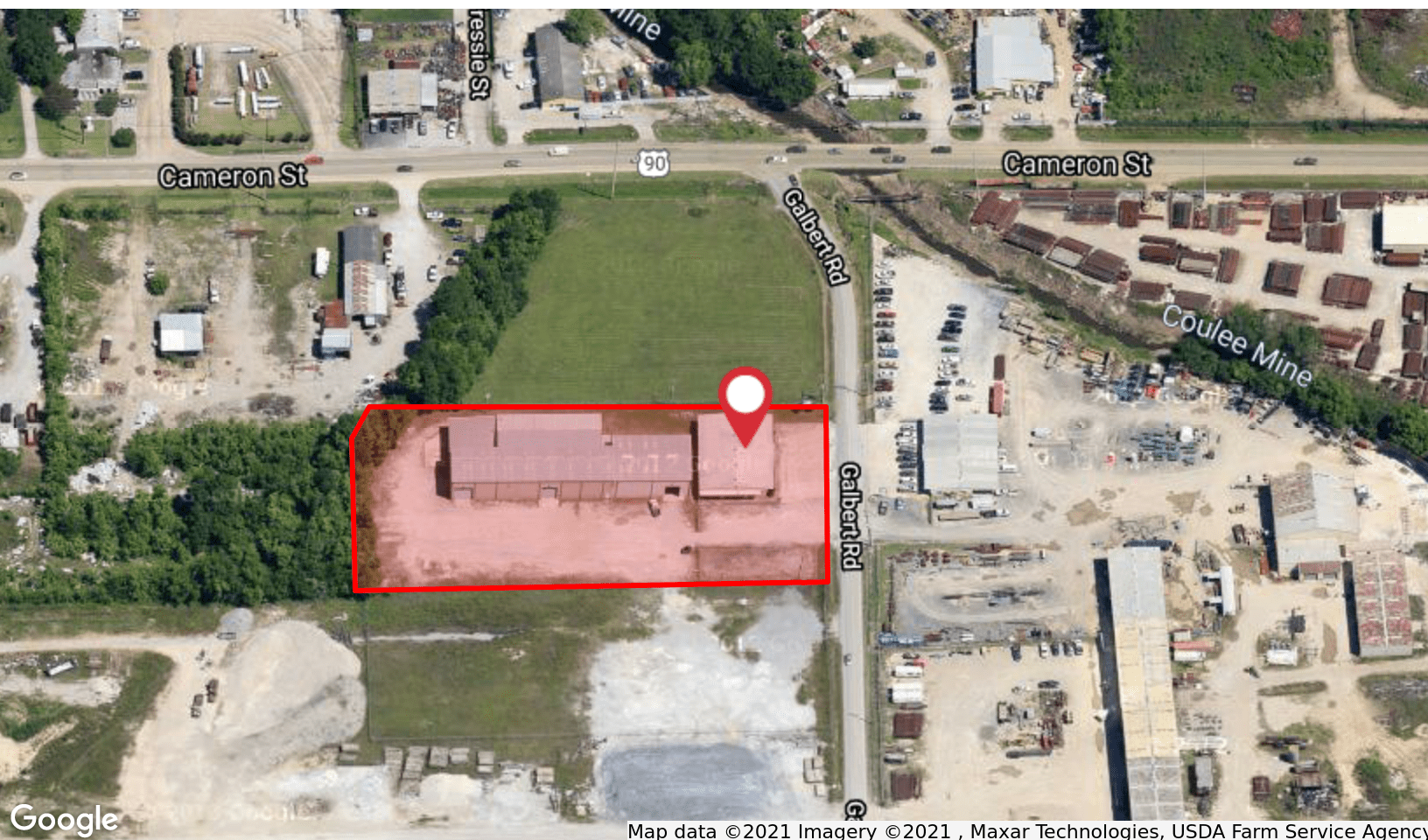


Warehouse / Shop Area

For illustration purposes only, not to scale

108 Galbert Rd,
Lafayette, La 70506

Location Maps



6 Degaulle Square
Lafayette, LA 70508
337 233 9541 tel
latterblum.com