

Delivering in **2015**

128,000 SF OF TROPHY CLASS OFFICE SPACE

S M A R T
— B O L D
C O N N E
C T E D —

— SMART

Highly visible and exceptionally sustainable, Tower Two-Sixty is prime Trophy Class office space featuring the latest in building design and green technologies. Tower Two-Sixty puts you among the most forward-thinking, eco-friendly, cool and connected businesses in Pittsburgh. A very SMART move!

— BOLD

Instantly elevate your business profile, tout a coveted business address, increase productivity, attract and retain the best employees, and save money through efficient design and green technology. Tower Two-Sixty – get ready to make your BOLD statement.

— CONNECTED

Impress your clients at our exquisite onsite restaurants or make accommodations for them in our onsite hotel – everything you and your business need conveniently located without stepping foot outside. Just outside, The Market Square neighborhood has truly become a destination for foodies. Delight employees with the many breakfast, lunch, and dinner options in this vibrant area.

FEATURES AND AMENITIES

- 300-space parking garage including reserved, monthly, daily & hourly
- Onsite 198-room Hilton Garden Inn
- Onsite restaurants including American Roost and Burgatory
- 24/7/365 onsite security

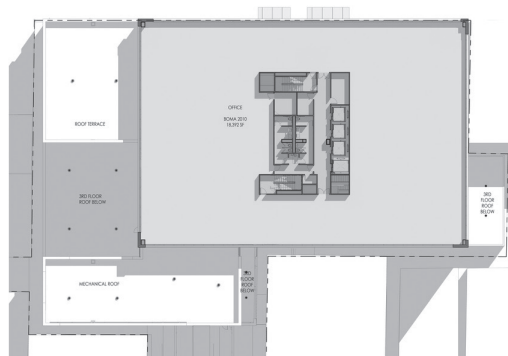


- 50% + of the building's power comes from a renewable source
- 10% energy performance improvement
- 12th floor open air space



- 128,000 SF LEED Silver designed trophy office space
- 18,500 SF floor plates
- 10' floor-to-ceiling windows
- Views of Market Square and beyond

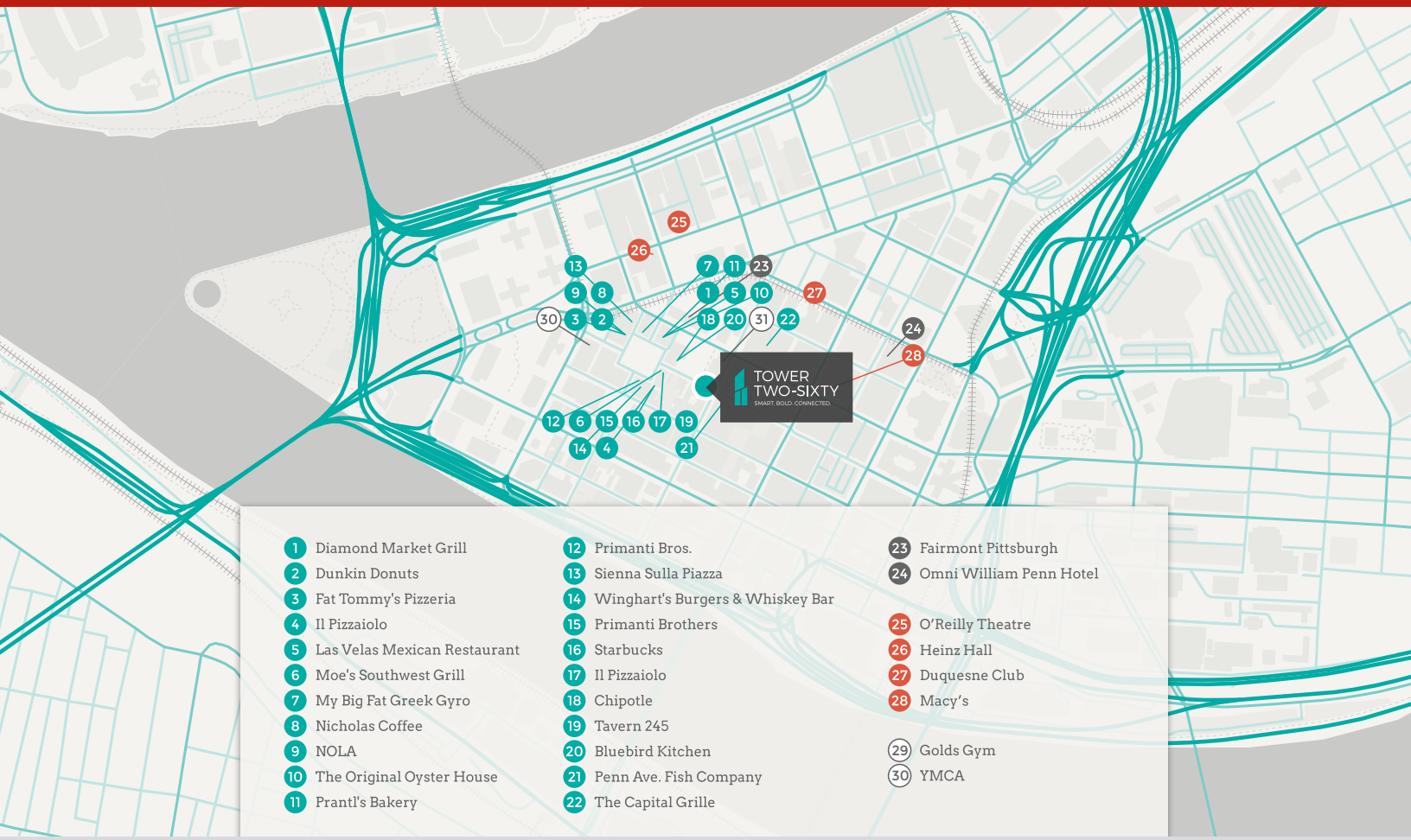
**TOWER
TWO-SIXTY**
SMART. BOLD. CONNECTED.



Delivering in 2015, Tower Two-Sixty will be ready when you're ready.

No waiting required.

YOUR COMPETITIVE ADVANTAGE STARTS NOW!



CONTACTS

Office Leasing:

Jason Stewart
412.208.1402

jason.stewart@am.jll.com



Retail Leasing:

Herky Pollock
412.471.9500

herky.pollock@cbre.com

