

# KEY BANK BUILDING

10655 NE 4<sup>TH</sup> STREET • BELLEVUE, WA



For further information please contact exclusive leasing agents:

**MATT SCHRECK**

425.646.5232

[schreck@broderickgroup.com](mailto:schreck@broderickgroup.com)

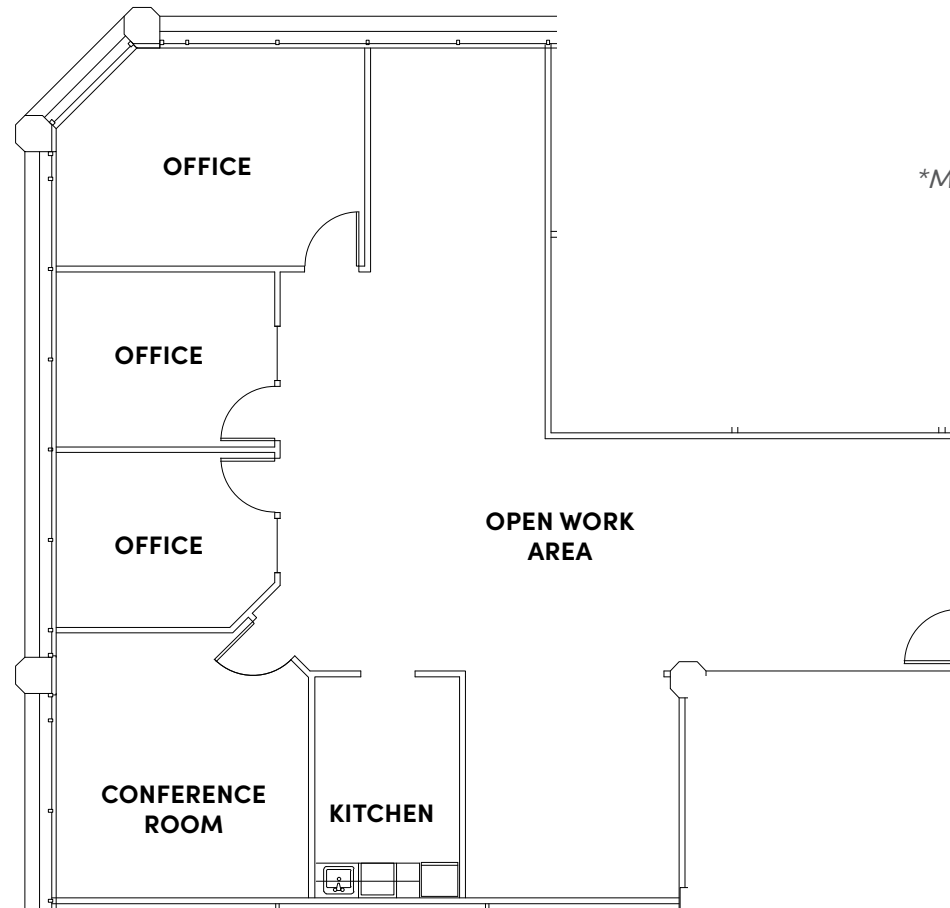
**COLIN TANIGAWA**

425.274.4283

[tanigawa@broderickgroup.com](mailto:tanigawa@broderickgroup.com)



[CLICK TO VIEW VIRTUAL TOUR](#)



## SUITE 606 2,113 SF

Four (4) private offices

Conference room

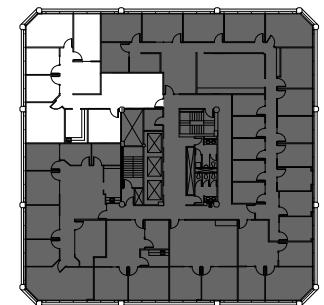
Kitchenette/work room

Open work area

*\*Market ready with all new finishes and new appliances*

Available Now

[SEE ENLARGED FLOOR PLAN](#)



[↑ BACK TO AVAILABLE](#)