

41095 CONCEPT DRIVE
PLYMOUTH, MICHIGAN

VACANT LAND FOR SALE
3.84 Acres Available



**SIGNATURE
ASSOCIATES**
KNOW SIGNATURE | KNOW RESULTS



PROPERTY FEATURES

- 3.84 acres available
- Zoned L-1
- All utilities available at site
- Fully improved light industrial land with easy access to I-275, I-96 & M-14 expressways
- Sale price: \$627,345 (\$163,371.09/acre)



For more information, please contact:

STEVE GORDON

(248) 948 0101

sgordon@signatureassociates.com

SIGNATURE ASSOCIATES
One Towne Square, Suite 1200
Southfield, MI 48076
www.signatureassociates.com

41095 Concept Drive – Plymouth Twp., Michigan Land For Sale

3.84
Acres
AVAILABLE

Metro Plymouth Business Park



For more information, please contact:
STEVE GORDON
(248) 948 0101
sgordon@signatureassociates.com

SIGNATURE ASSOCIATES
One Towne Square, Suite 1200
Southfield, MI 48076
www.signatureassociates.com

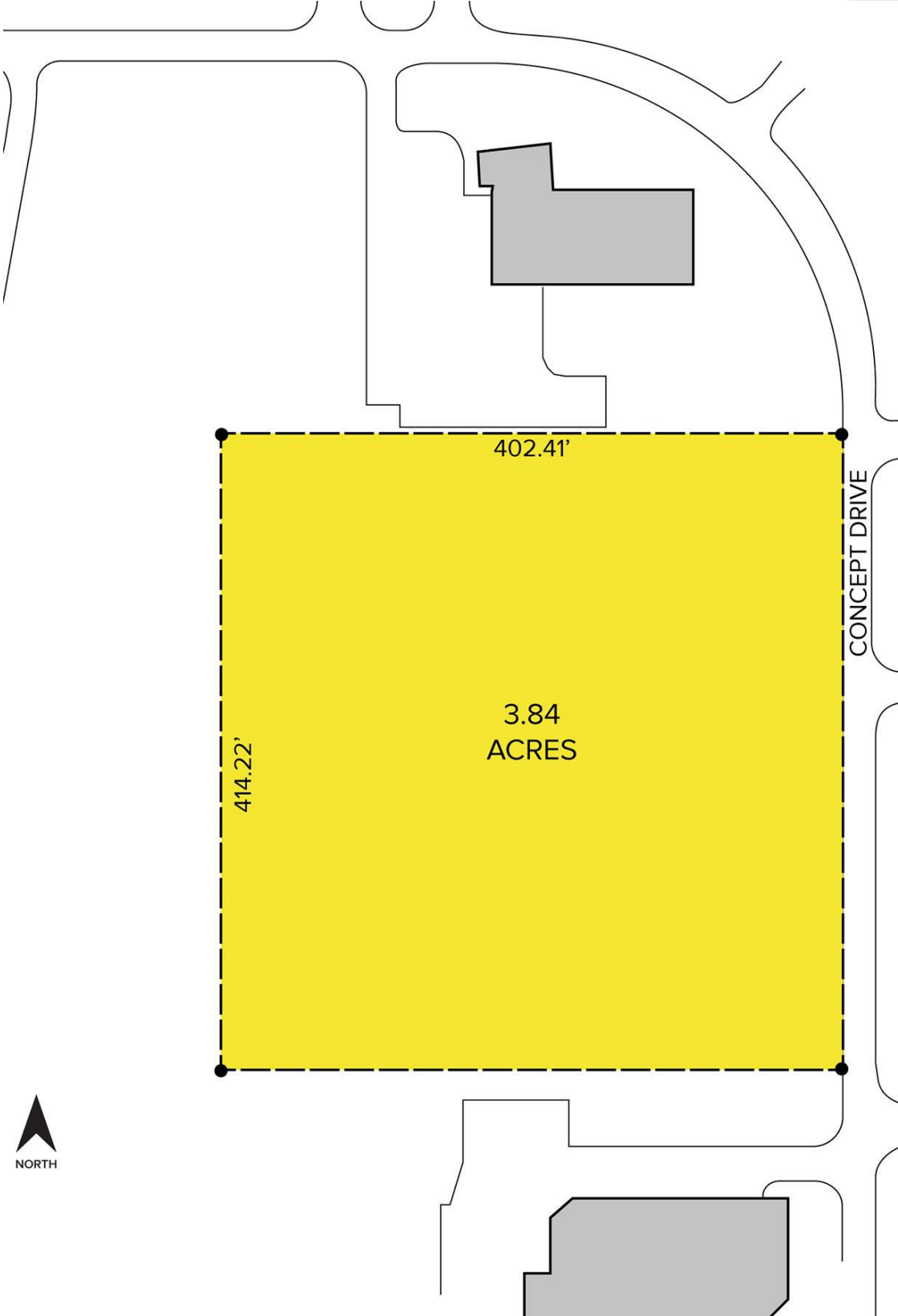
Information is subject to verification and no liability for errors or omissions is assumed. Price is subject to change and listing withdrawal.

41095 Concept Drive – Plymouth Twp., Michigan

Land For Sale

3.84
Acres
AVAILABLE

Site Plan



For more information, please contact:
STEVE GORDON
(248) 948 0101
sgordon@signatureassociates.com

SIGNATURE ASSOCIATES
One Towne Square, Suite 1200
Southfield, MI 48076
www.signatureassociates.com

Information is subject to verification and no liability for errors or omissions is assumed. Price is subject to change and listing withdrawal.