

# PREMIER MULTI-FAMILY LAND SITE FULLY ENTITLED FOR UP TO 50 DUs /AC

*PROPERTY A - MEADOWLARK LANE & SARA in RIO RANCHO, NM*



## CONCEPTUAL SITE LAYOUT





- Ready-To-Go, Premier Multi-Family Development Site in Close Proximity to Numerous Employment and Activity Generators - Cottonwood Mall Retail Hub, Lovelace Westside Hospital, Rust Medical Center and Various Call Center Operations in Rio Rancho
- Straight R-6 Zoning in Place within City of Rio Rancho
- Site Has Been Laid Out for Class A, 169 Unit Development with Full Amenities
- One-of-a-Kind Site Provides Unimpeded Panoramic Views of the Rio Grande Valley, Sandia Mountains and Albuquerque Landscape
- 4.25+/- Acres Recently Approved for Hi Density Multi Family Development
- Priced @ \$ 985,000 (\$5.32/SF) for Property A
- Adjacent Property B Consisting of 3 AC Could Potentially Be Assembled
- Ideal for Either a HUD or Conventional Multi-Family Project
- Ownership Will Consider Equity Participation with Right Type of Developer

**Contact:**

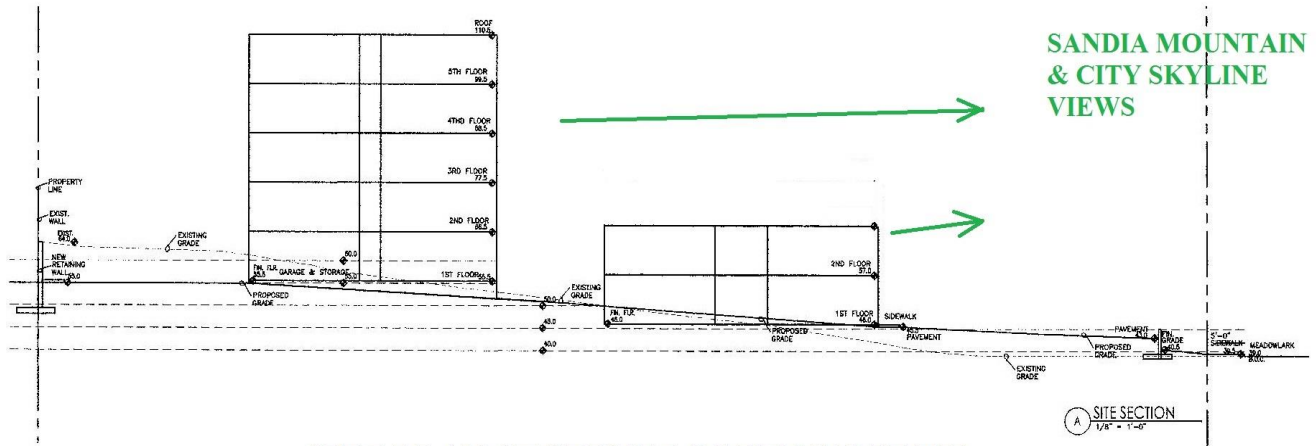
**Mark Edwards, Owner/Broker**



**Leasing ♦ Brokerage ♦ Development**

**Executive West Bldg. 2929 Coors Blvd. NW Ste, #202  
Albuquerque, NM 87120  
505-998-7298 Cell 505-350-8211 Fax 505-998-7299**

This information was obtained from sources deemed reliable. No warranty is made by Edwards Commercial Realty, LLC as to the accuracy or completeness of this material. The pricing and sale/lease terms are subject to change



**SITE PLAN SECTION LOOKING NORTH**





**SANDIA MOUNTAINS IN BACKGROUND ON A WINTER DAY**



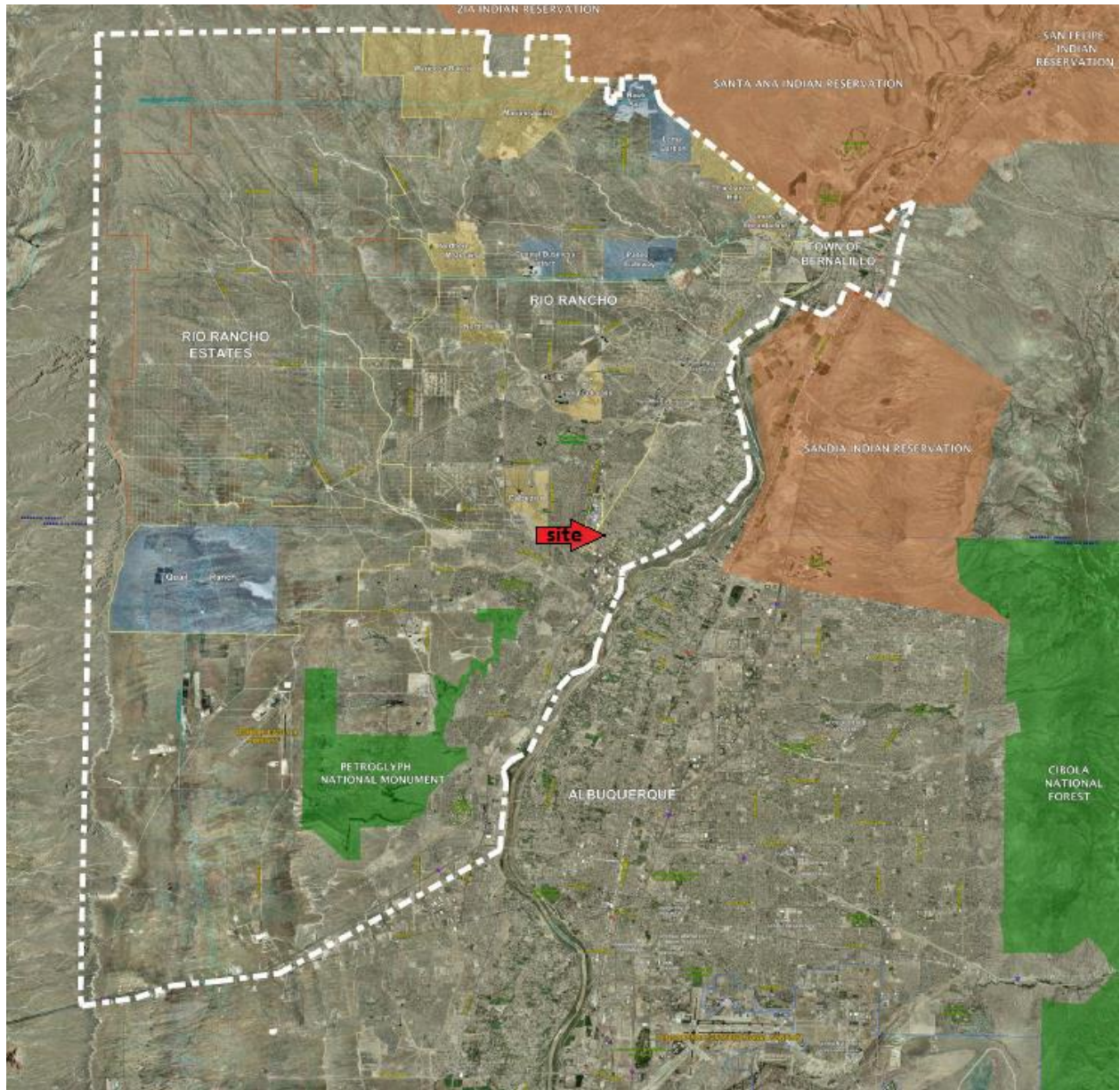
**MANZANO MOUNTAINS IN BACKGROUND ON A WINTER DAY**



**SANDIA MOUNTAINS AND RIO GRANDE VALLEY ON SUMMER DAY**

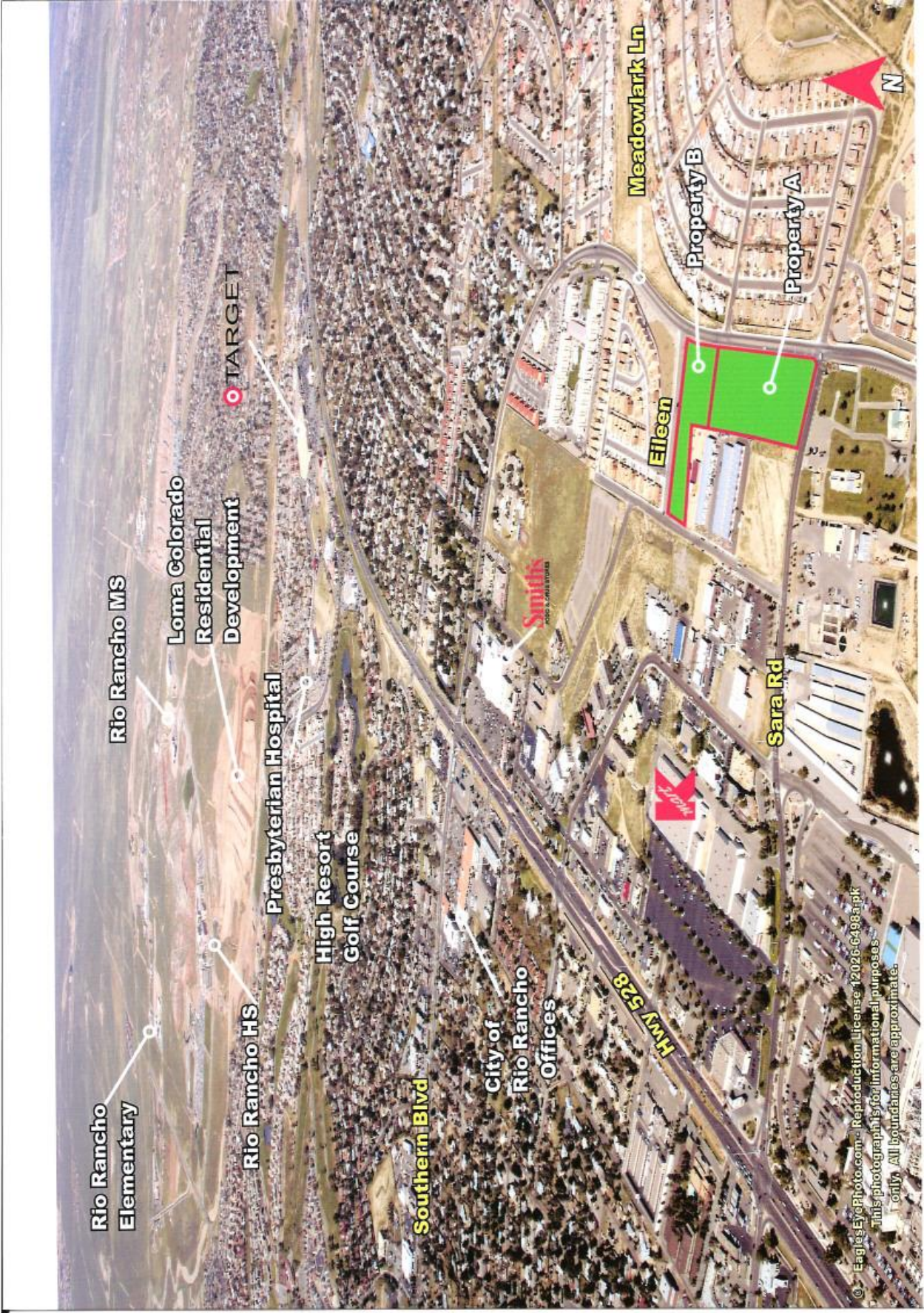


# ALBUQUERQUE/RIO RANCHO METRO AREA



# COTTONWOOD/RIO RANCHO VICINITY MAP





Rio Rancho Elementary

Rio Rancho MS

Loma Colorado Residential Development

TARGET

Presbyterian Hospital

High Resort Golf Course

Rio Rancho HS

Southern Blvd

City of Rio Rancho Offices

Smith's

Hwy 528

Meadowlark Ln

Property B

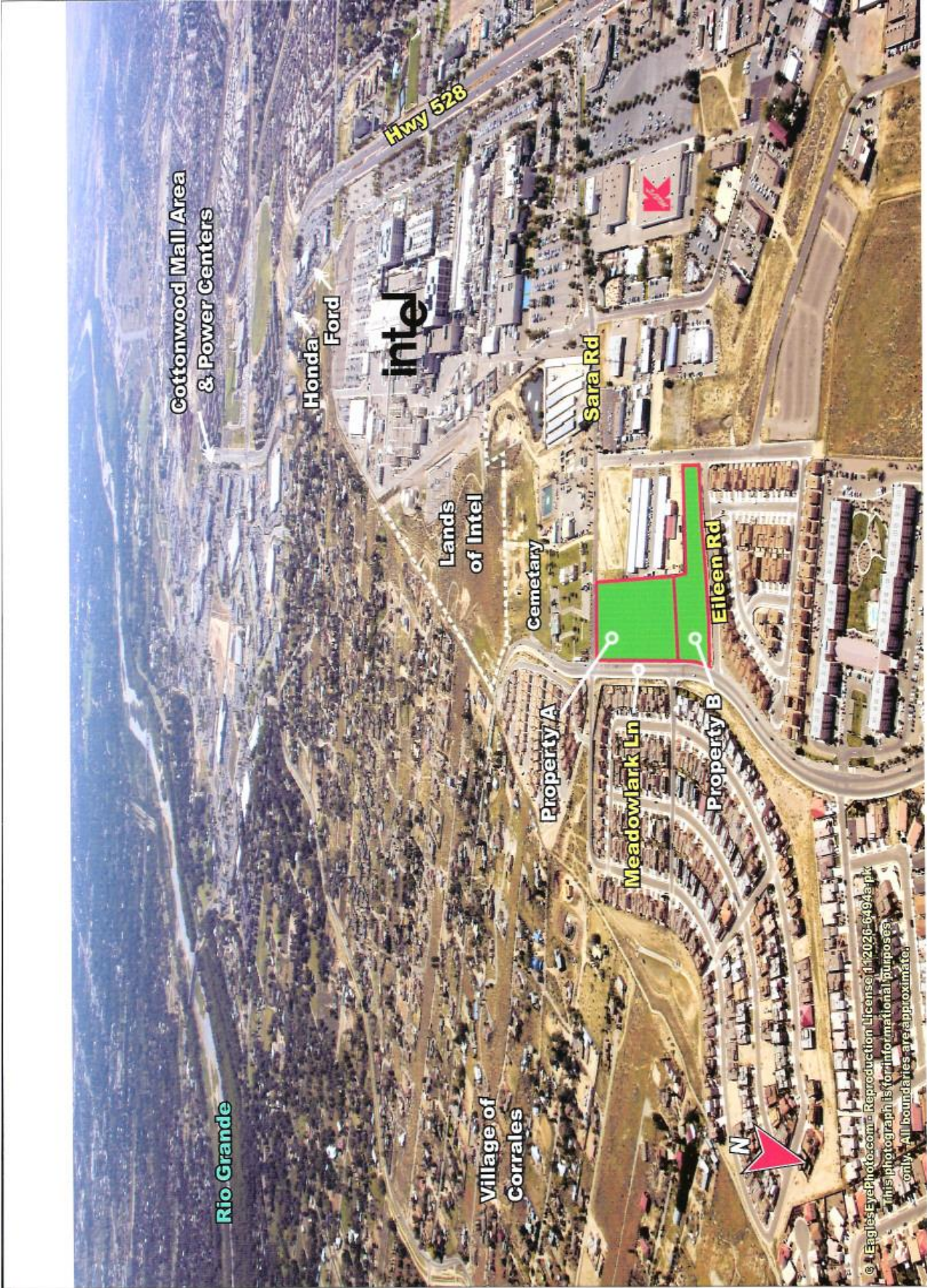
Property A

Eileen

Sara Rd

© EaglesEyePhoto.com - Reproduction License 12026-6498-01-pk  
This photograph is for informational purposes only. All boundaries are approximate.





Cottonwood Mall Area  
& Power Centers

Honda  
Ford

intel

Lands  
of Intel

Cemetary

Property A

Meadowlark Ln

Property B

Eileen Rd

Sara Rd

Hwy 528

Rio Grande

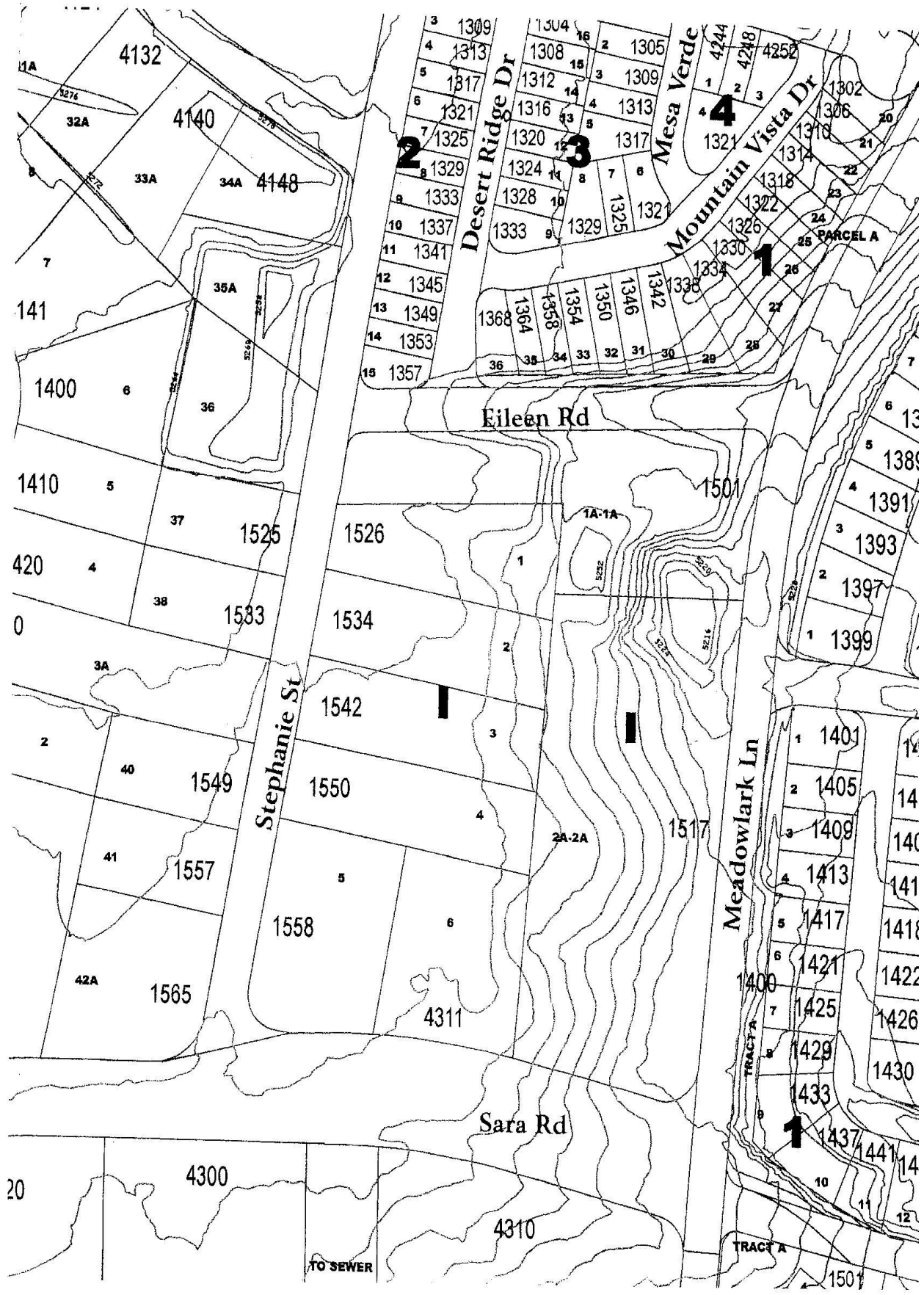
Village of  
Corrales



© EagleEyePhoto.com - Reproduction License 112026-6494e.pk  
This photograph is for informational purposes  
only. All boundaries are approximate.

# AERIAL VICINITY MAP





Desert Ridge Dr

Mesa Verde

Mountain Vista Dr

Eileen Rd

Stephanie St

Sara Rd

Meadowlark Ln

3 1309  
4 1313  
5 1317  
6 1321  
7 1325  
8 1329  
9 1333  
10 1337  
11 1341  
12 1345  
13 1349  
14 1353  
15 1357

1304 16  
1308 15  
1312 14  
1316 13  
1320 12  
1324 11  
1328 10  
1333 9  
1338 8  
1342 7  
1346 6  
1350 5  
1354 4  
1358 3  
1362 2  
1366 1

1305 2  
1309 3  
1313 4  
1317 5  
1321 6  
1325 7  
1329 8  
1333 9  
1337 10  
1341 11  
1345 12  
1349 13  
1353 14  
1357 15  
1361 16  
1365 17  
1369 18  
1373 19  
1377 20  
1381 21  
1385 22  
1389 23  
1393 24  
1397 25  
1401 26  
1405 27  
1409 28  
1413 29  
1417 30  
1421 31  
1425 32  
1429 33  
1433 34  
1437 35  
1441 36

1A  
32A  
33A  
34A  
35A  
36  
37  
38  
39  
40  
41  
42A

141  
1400  
1410  
420  
0  
1525  
1526  
1534  
1542  
1549  
1557  
1558  
1565

20  
4300  
4310

1389  
1391  
1393  
1397  
1399  
1401  
1405  
1409  
1413  
1417  
1421  
1425  
1429  
1433  
1437  
1441  
1445  
1449  
1453  
1457  
1461  
1465  
1469  
1473  
1477  
1481  
1485  
1489  
1493  
1497  
1501



# Demographic Report

Sara Road and Meadowlark Lane  
Rio Rancho, New Mexico

	1 mile radius	3 mile radius	5 mile radius	
<b>POPULATION</b>	2014 Estimated Population	6,382	66,603	135,079
	2019 Projected Population	6,553	70,274	142,334
	2010 Census Population	6,236	63,169	128,383
	2000 Census Population	5,077	44,632	90,290
	Growth 2010-2014	2.34%	5.44%	5.22%
	Growth 2014-2019	2.67%	5.51%	5.37%
<b>POPULATION</b>	2014 Estimated Median Age	51.31	39.57	38.27
	2014 Estimated Average Age	48.01	39.44	38.38
<b>HOUSEHOLDS</b>	2014 Estimated Households	3,144	26,716	52,192
	2019 Projected Households	3,279	28,329	55,116
	2010 Census Households	3,013	25,146	49,456
	2000 Census Households	2,334	17,379	33,770
	Growth 2010-2014	4.38%	6.24%	5.53%
	Growth 2014-2019	4.27%	6.04%	5.60%
<b>HOUSEHOLDS</b>	2014 Est. Average Household Size	2.08	2.49	2.57
<b>INCOME</b>	2014 Est. Median Household Income	\$45,386	\$55,709	\$57,649
	2019 Prj. Median Household Income	\$49,626	\$60,577	\$62,295
	2000 Cen. Median Household Income	\$41,356	\$49,575	\$49,731
	2014 Est. Average Household Income	\$69,702	\$74,036	\$74,109
<b>INCOME</b>	2014 Estimated Per Capita Income	\$34,341	\$29,697	\$28,634
<b>HOUSING</b>	2014 Estimated Housing Units	3,381	28,373	55,260
	2014 Estimated Occupied Units	3,144	26,716	52,192
	2014 Estimated Vacant Units	237	1,657	3,068
	2014 Est. Owner Occupied Units	1,933	18,945	38,728
	2014 Est. Renter Occupied Units	1,212	7,770	13,463
	2014 Est. Median Housing Value	\$196,453	\$210,515	\$204,886
	2014 Est. Average Housing Value	\$261,968	\$267,633	\$254,967
	<b>HOUSING</b>			