

# TOWERS AT SHORES CENTER

REDWOOD CITY / CA



201 + 203 REDWOOD SHORES PARKWAY  
REDWOOD CITY, CALIFORNIA

[HUDSONPACIFICPROPERTIES.COM](http://HUDSONPACIFICPROPERTIES.COM)





# WORK & PLAY IN DYNAMIC REDWOOD SHORES

## FEATURES AND AMENITIES

**±334,000**  
SQUARE FEET

---

**2-BUILDING**  
CLASS A  
OFFICE CAMPUS

---

**DEDICATED**  
SHUTTLE FROM  
CALTRAIN

### BUILDING INFO

- + Dedicated HPP Shuttle to Hillsdale Caltrain Station
- + Shuttle to San Carlos Caltrain Station
- + Common Area Wi-Fi
- + Outdoor Seating, Sand Volleyball & Bocce Ball Courts
- + On-Site Fitness Center, Showers & Lockers
- + 24/7 Security
- + Covered & Secured Parking
- + EV Charging Stations
- + Walking Distance to Shopping, Dining, Fitness & Hotel Amenities



# WELCOME TO THE NEIGHBORHOOD



## DINING & MORE

### 1 Redwood Shores Marketplace

- + Nob Hill Foods
- + Starbucks
- + Bagel Street Cafe
- + Amici's Pizzeria
- + Jamba Juice
- + Una Mas
- + Asian Spot Kitchen
- + Falafel Tazah
- + Togo's
- + The Grill House
- + Bank of America
- + Orangetheory Fitness

- 2 Steve's Cafe & Catering
- 3 Starbucks
- 4 In N Out Burger
- 5 Rendezvous Cafe & Catering
- 6 Blue Line Pizza
- 7 Izzy's Steaks & Chops
- 8 Cuisenette
- 9 Delizie Cucina & Vino
- 10 Ragoon Ruby
- 11 Town
- 12 Sakura Teppanyaki & Sushi
- 13 Mistral Restaurant & Bar

## ACCOMMODATIONS

- 1 Pullman San Francisco Bay
- 2 TownePlace Suites
- 3 Fairfield Inn & Suites

## HEALTH & FITNESS

- 1 Bay Club Redwood Shores
- 2 HomeGrown Crossfit
- 3 Undisputed Boxing Gym





# REIMAGINING NOW. TO CREATE WHAT'S NEXT.



FOR MORE INFORMATION CONTACT: 333 TWIN DOLPHIN DRIVE, SUITE 1800, REDWOOD CITY / CA 94065 | 650 200 2900

WHERE WE WORK IS NOT JUST WHERE WE WORK. IT'S PART OF WHO WE ARE AND HOW WE THRIVE. AT HUDSON PACIFIC PROPERTIES, THAT'S WHAT DRIVES US TO STAY ONE STEP AHEAD, LOOKING FOR OPPORTUNITIES IN JUST THE RIGHT PLACES TO BRING INNOVATION TO LIFE.

When you partner with us you get a lasting relationship focused on addressing your every need. From an entrance that signals you've arrived to an environment that fosters collaboration, creativity and success, we provide the state-of-the-art infrastructure and excellent service necessary to fulfill your business strategy. And when you're ready, we're here to help you expand for the future, because the sky's the limit.

We're driven to find the next amazing space for today and tomorrow's leading companies—building it from the ground up or reimagining it from the inside out. With Hudson Pacific Properties, everything is possible.



LOS ANGELES • SILICON VALLEY  
SAN FRANCISCO • SEATTLE

[HUDSONPACIFICPROPERTIES.COM](http://HUDSONPACIFICPROPERTIES.COM)

## Available Suites

Click to view floor plan

Suite #	Size (Square Feet)
201: 360	±2,132
201: 375	±2,882
203: 145	±3,565
203: 230	±4,490
203: 450	±3,439
203: 600	±5,229
203: 620	±2,560
203: 640	±2,853
203: 680	±3,071

The distributor of this communication is performing acts for which a real estate license is required. The information contained herein has been obtained from sources deemed reliable but has not been verified and no guarantee, warranty or representation, either express or implied, is made with respect to such information. Terms of sale or lease and availability are subject to change or withdrawal without notice.

For leasing information, contact:

**JOSH ROWELL**

+1 650 358 5261

JRowell@ngkf.com

CA RE License #01236434

**CRAIG KALINOWSKI**

+1 650 358 5287

CKalinowski@ngkf.com

CA RE License #01260870

**MATT WINTERS**

+1 650 688 8490

Matt.Winters@ngkf.com

CA RE License #01405284

# TOWERS AT SHORES CENTER

REDWOOD CITY / CA

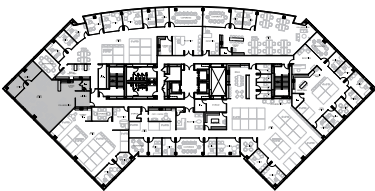
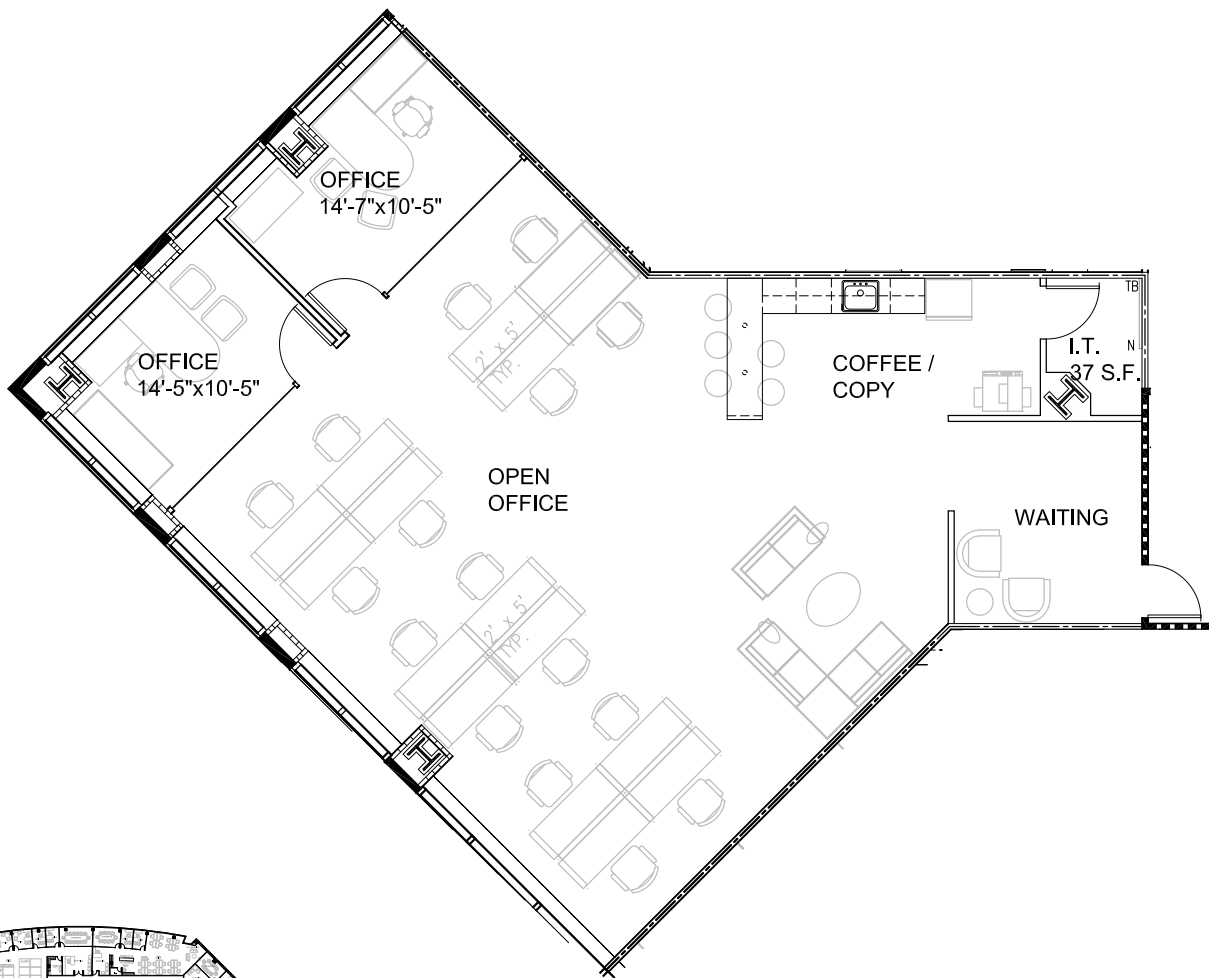
## 201: Suite # 360

±2,132 SF

CLICK HERE FOR



VIRTUAL TOUR



The distributor of this communication is performing acts for which a real estate license is required. The information contained herein has been obtained from sources deemed reliable but has not been verified and no guarantee, warranty or representation, either express or implied, is made with respect to such information. Terms of sale or lease and availability are subject to change or withdrawal without notice.

For leasing information, contact:

**JOSH ROWELL**

+1 650 358 5261

JRowell@ngkf.com

CA RE License #01236434

**CRAIG KALINOWSKI**

+1 650 358 5287

CKalinowski@ngkf.com

CA RE License #01260870

**MATT WINTERS**

+1 650 688 8490

Matt.Winters@ngkf.com

CA RE License #01405284

NEWMARK



HUDSONPACIFICPROPERTIES.COM

# TOWERS AT SHORES CENTER

REDWOOD CITY / CA

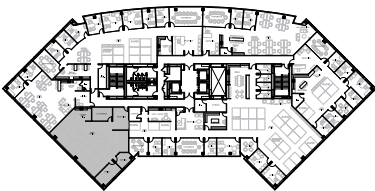
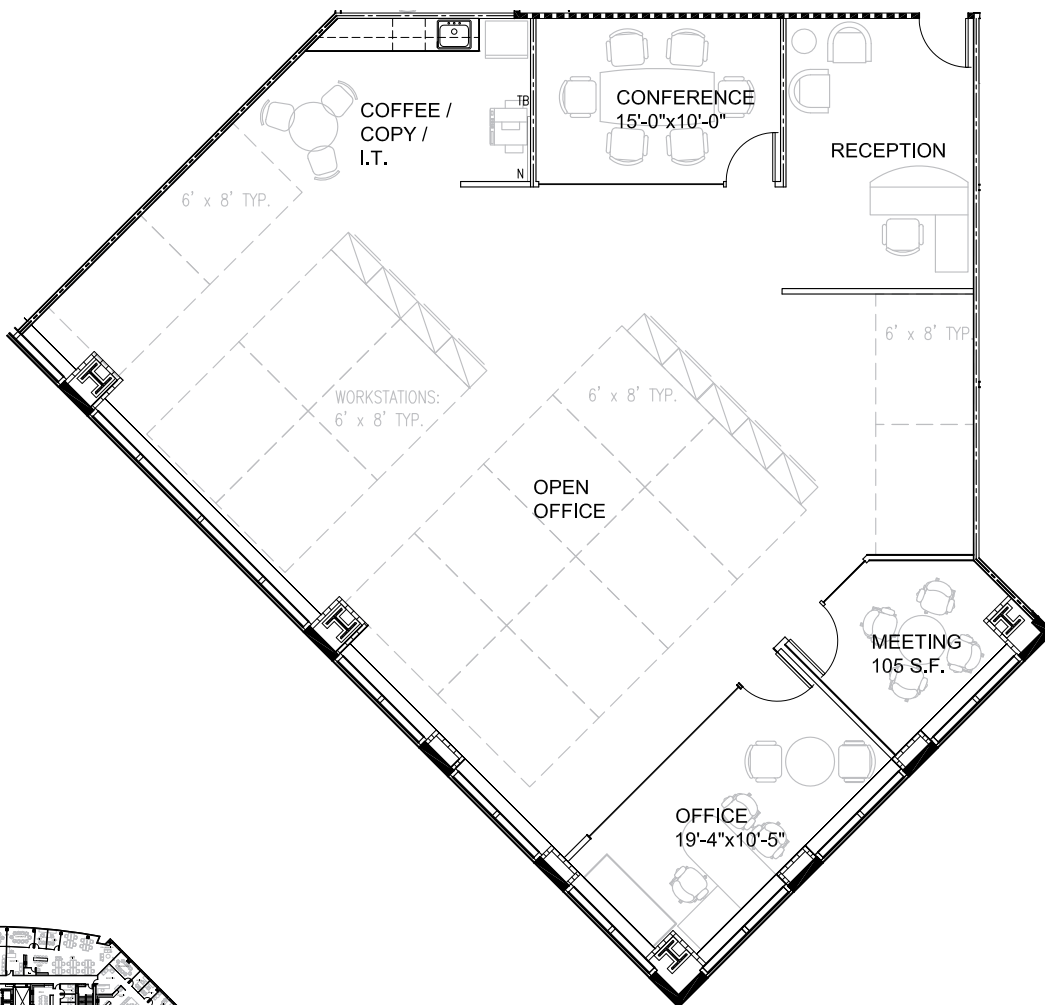
## 201: Suite # 375

±2,882 SF

CLICK HERE FOR



VIRTUAL TOUR



The distributor of this communication is performing acts for which a real estate license is required. The information contained herein has been obtained from sources deemed reliable but has not been verified and no guarantee, warranty or representation, either express or implied, is made with respect to such information. Terms of sale or lease and availability are subject to change or withdrawal without notice.

For leasing information, contact:

**JOSH ROWELL**

+1 650 358 5261

JRowell@ngkf.com

CA RE License #01236434

**CRAIG KALINOWSKI**

+1 650 358 5287

CKalinowski@ngkf.com

CA RE License #01260870

**MATT WINTERS**

+1 650 688 8490

Matt.Winters@ngkf.com

CA RE License #01405284

NEWMARK



HUDSONPACIFICPROPERTIES.COM

# TOWERS AT SHORES CENTER

REDWOOD CITY / CA

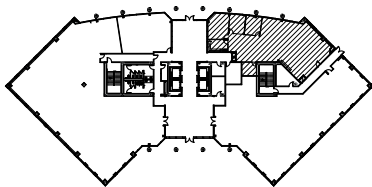
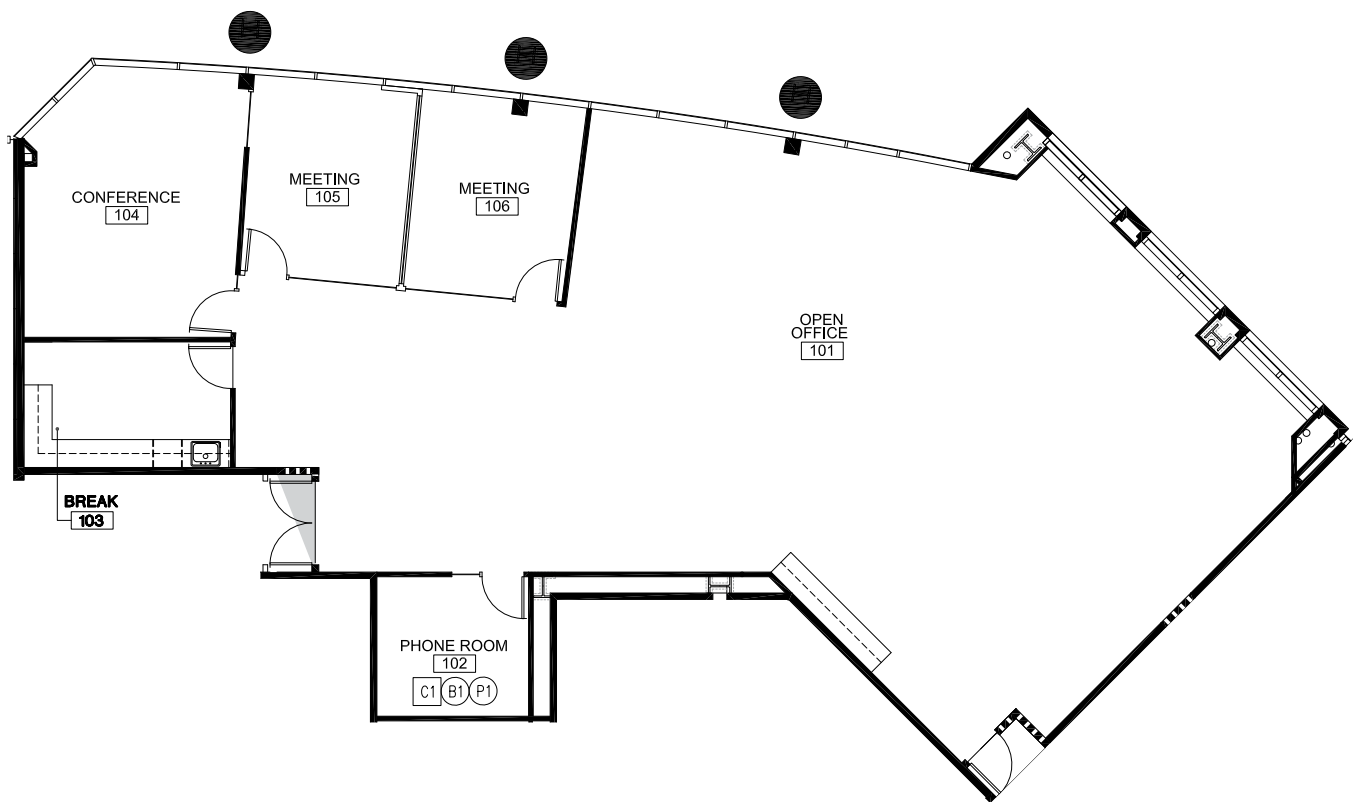
## 203: Suite # 145

±3,565 SF

CLICK HERE FOR



VIRTUAL TOUR



The distributor of this communication is performing acts for which a real estate license is required. The information contained herein has been obtained from sources deemed reliable but has not been verified and no guarantee, warranty or representation, either express or implied, is made with respect to such information. Terms of sale or lease and availability are subject to change or withdrawal without notice.

For leasing information, contact:

**JOSH ROWELL**

+1 650 358 5261

JRowell@ngkf.com

CA RE License #01236434

**CRAIG KALINOWSKI**

+1 650 358 5287

CKalinowski@ngkf.com

CA RE License #01260870

**MATT WINTERS**

+1 650 688 8490

Matt.Winters@ngkf.com

CA RE License #01405284

NEWMARK



HUDSONPACIFICPROPERTIES.COM



# TOWERS AT SHORES CENTER

REDWOOD CITY / CA

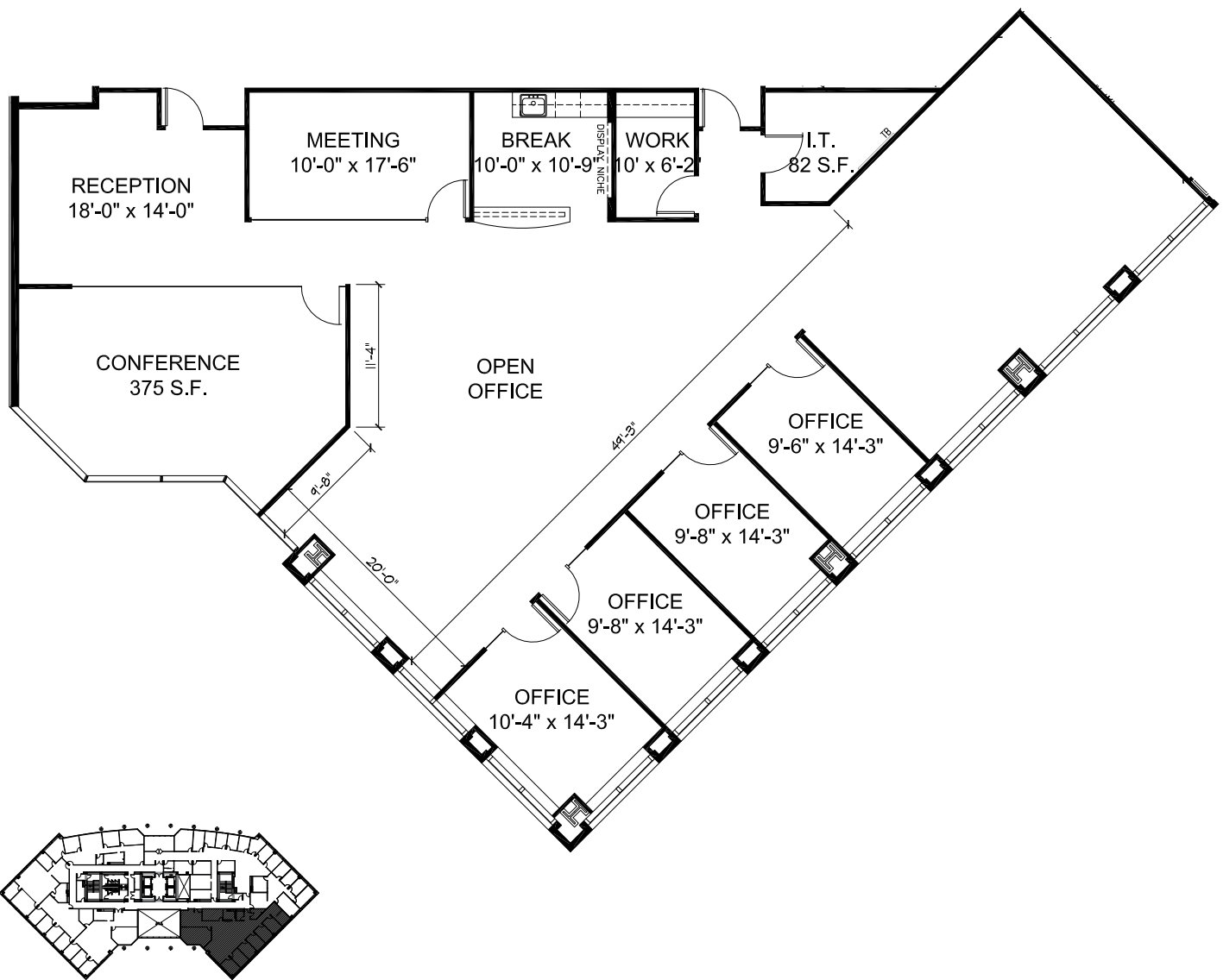
## 203: Suite # 230

±4,490 SF

CLICK HERE FOR



VIRTUAL TOUR



The distributor of this communication is performing acts for which a real estate license is required. The information contained herein has been obtained from sources deemed reliable but has not been verified and no guarantee, warranty or representation, either express or implied, is made with respect to such information. Terms of sale or lease and availability are subject to change or withdrawal without notice.

For leasing information, contact:

**JOSH ROWELL**

+1 650 358 5261

JRowell@ngkf.com

CA RE License #01236434

**CRAIG KALINOWSKI**

+1 650 358 5287

CKalinowski@ngkf.com

CA RE License #01260870

**MATT WINTERS**

+1 650 688 8490

Matt.Winters@ngkf.com

CA RE License #01405284

NEWMARK



HUDSONPACIFICPROPERTIES.COM

# TOWERS AT SHORES CENTER

REDWOOD CITY / CA

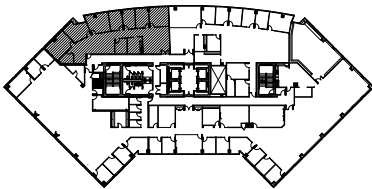
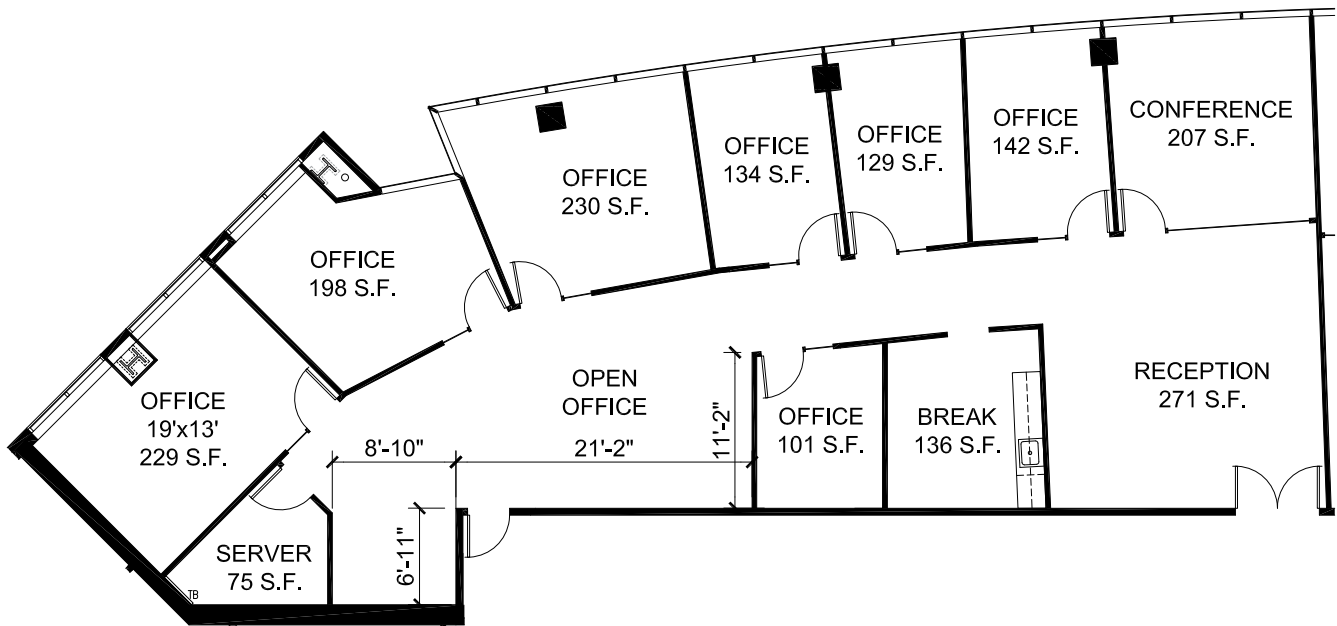
## 203: Suite # 450

±3,439 SF

CLICK HERE FOR



VIRTUAL TOUR



The distributor of this communication is performing acts for which a real estate license is required. The information contained herein has been obtained from sources deemed reliable but has not been verified and no guarantee, warranty or representation, either express or implied, is made with respect to such information. Terms of sale or lease and availability are subject to change or withdrawal without notice.

For leasing information, contact:

**JOSH ROWELL**

+1 650 358 5261

JRowell@ngkf.com

CA RE License #01236434

**CRAIG KALINOWSKI**

+1 650 358 5287

CKalinowski@ngkf.com

CA RE License #01260870

**MATT WINTERS**

+1 650 688 8490

Matt.Winters@ngkf.com

CA RE License #01405284

NEWMARK



HUDSONPACIFICPROPERTIES.COM



# TOWERS AT SHORES CENTER

REDWOOD CITY / CA

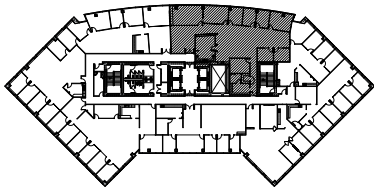
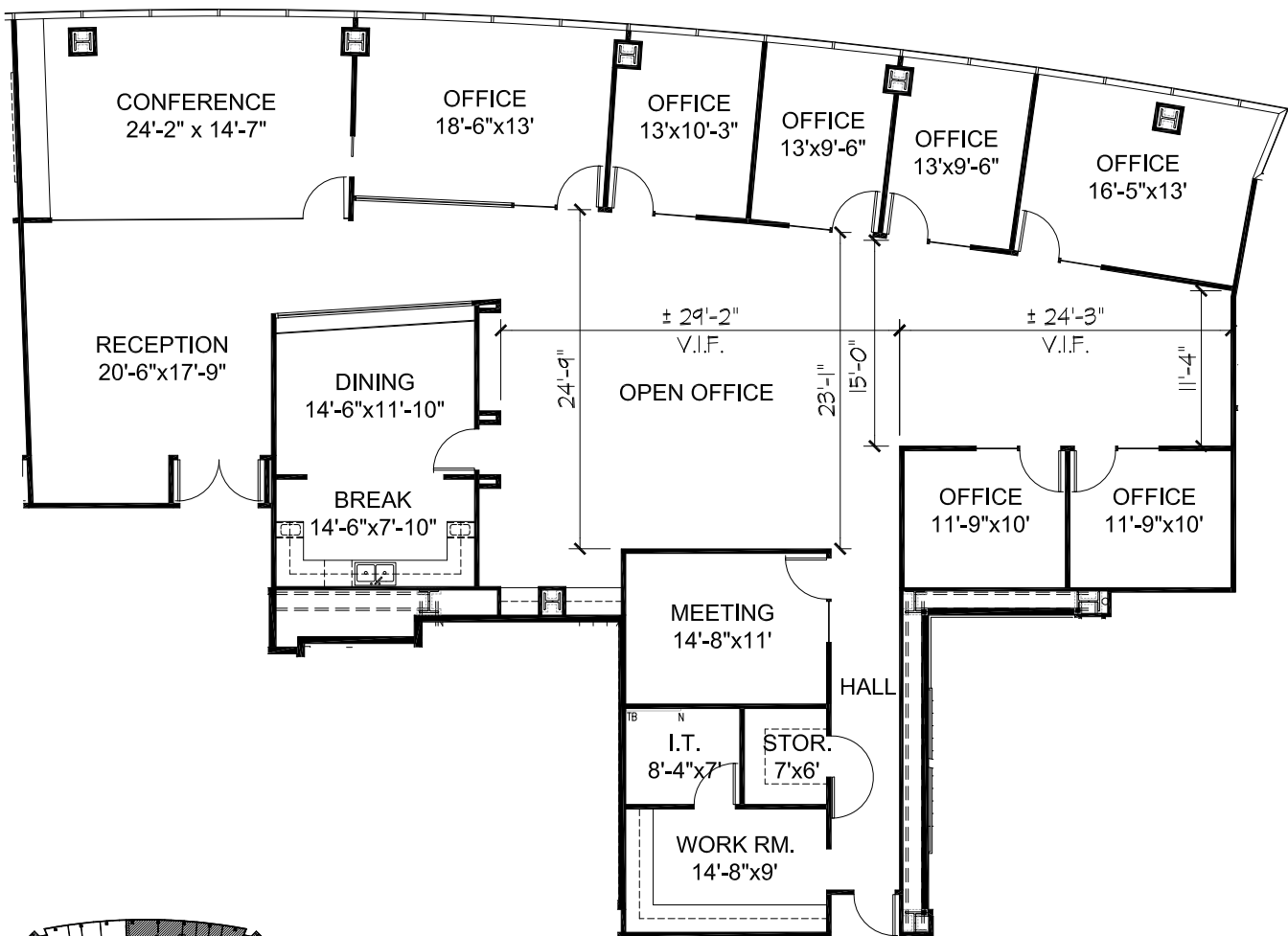
## 203: Suite # 600

±5,229 SF

CLICK HERE FOR



VIRTUAL TOUR



The distributor of this communication is performing acts for which a real estate license is required. The information contained herein has been obtained from sources deemed reliable but has not been verified and no guarantee, warranty or representation, either express or implied, is made with respect to such information. Terms of sale or lease and availability are subject to change or withdrawal without notice.

For leasing information, contact:

**JOSH ROWELL**

+1 650 358 5261

JRowell@ngkf.com

CA RE License #01236434

**CRAIG KALINOWSKI**

+1 650 358 5287

CKalinowski@ngkf.com

CA RE License #01260870

**MATT WINTERS**

+1 650 688 8490

Matt.Winters@ngkf.com

CA RE License #01405284

NEWMARK



HUDSONPACIFICPROPERTIES.COM

# TOWERS AT SHORES CENTER

REDWOOD CITY / CA

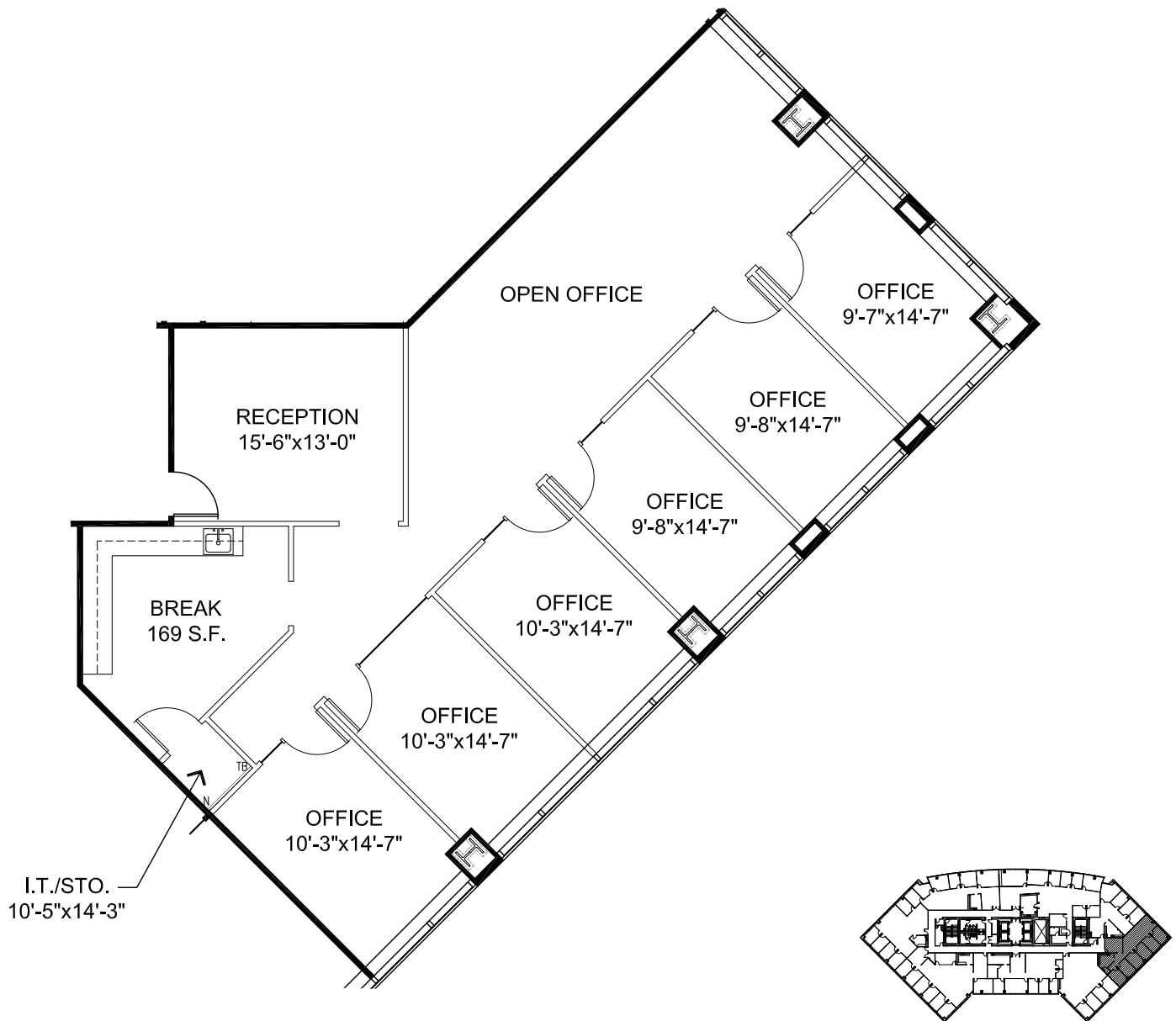
## 203: Suite # 620

±2,560 SF

CLICK HERE FOR



VIRTUAL TOUR



The distributor of this communication is performing acts for which a real estate license is required. The information contained herein has been obtained from sources deemed reliable but has not been verified and no guarantee, warranty or representation, either express or implied, is made with respect to such information. Terms of sale or lease and availability are subject to change or withdrawal without notice.

For leasing information, contact:

**JOSH ROWELL**

+1 650 358 5261

JRowell@ngkf.com

CA RE License #01236434

**CRAIG KALINOWSKI**

+1 650 358 5287

CKalinowski@ngkf.com

CA RE License #01260870

**MATT WINTERS**

+1 650 688 8490

Matt.Winters@ngkf.com

CA RE License #01405284

NEWMARK



HUDSONPACIFICPROPERTIES.COM



# TOWERS AT SHORES CENTER

REDWOOD CITY / CA

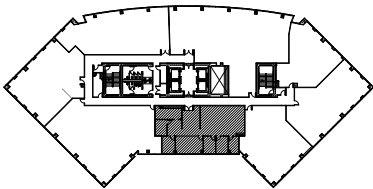
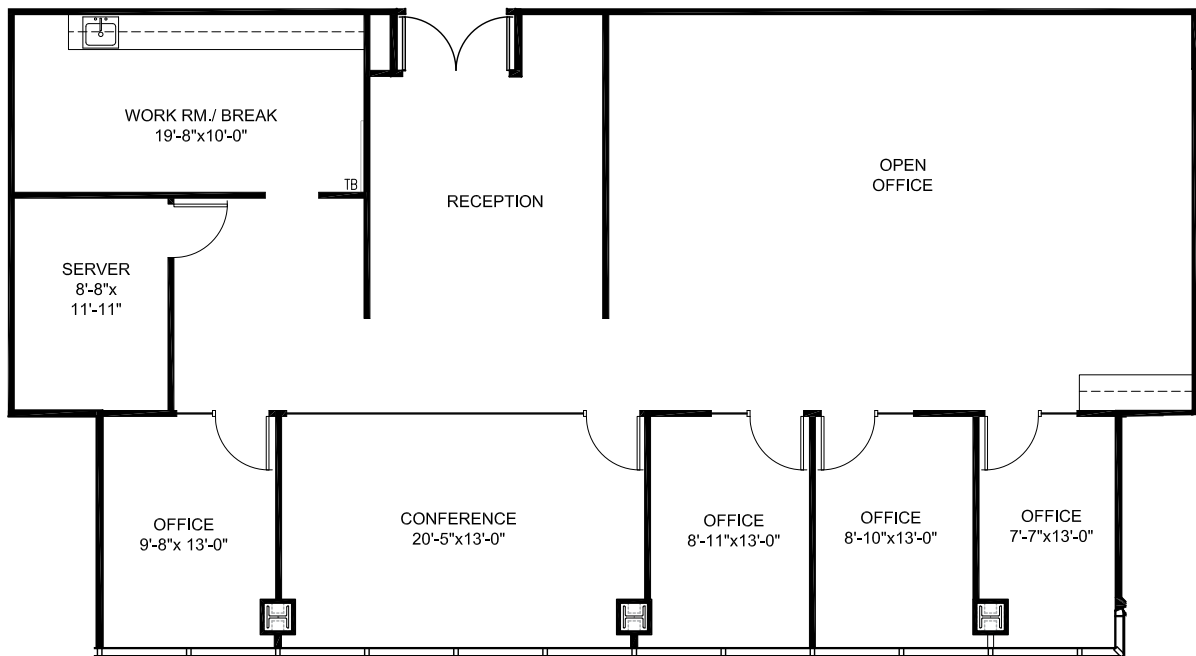
## 203: Suite # 640

±2,853 SF

CLICK HERE FOR



VIRTUAL TOUR



The distributor of this communication is performing acts for which a real estate license is required. The information contained herein has been obtained from sources deemed reliable but has not been verified and no guarantee, warranty or representation, either express or implied, is made with respect to such information. Terms of sale or lease and availability are subject to change or withdrawal without notice.

For leasing information, contact:

**JOSH ROWELL**

+1 650 358 5261

JRowell@ngkf.com

CA RE License #01236434

**CRAIG KALINOWSKI**

+1 650 358 5287

CKalinowski@ngkf.com

CA RE License #01260870

**MATT WINTERS**

+1 650 688 8490

Matt.Winters@ngkf.com

CA RE License #01405284

NEWMARK



HUDSONPACIFICPROPERTIES.COM

# TOWERS AT SHORES CENTER

REDWOOD CITY / CA

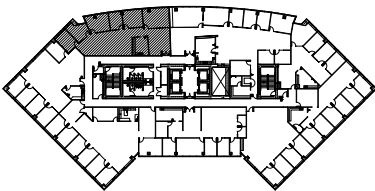
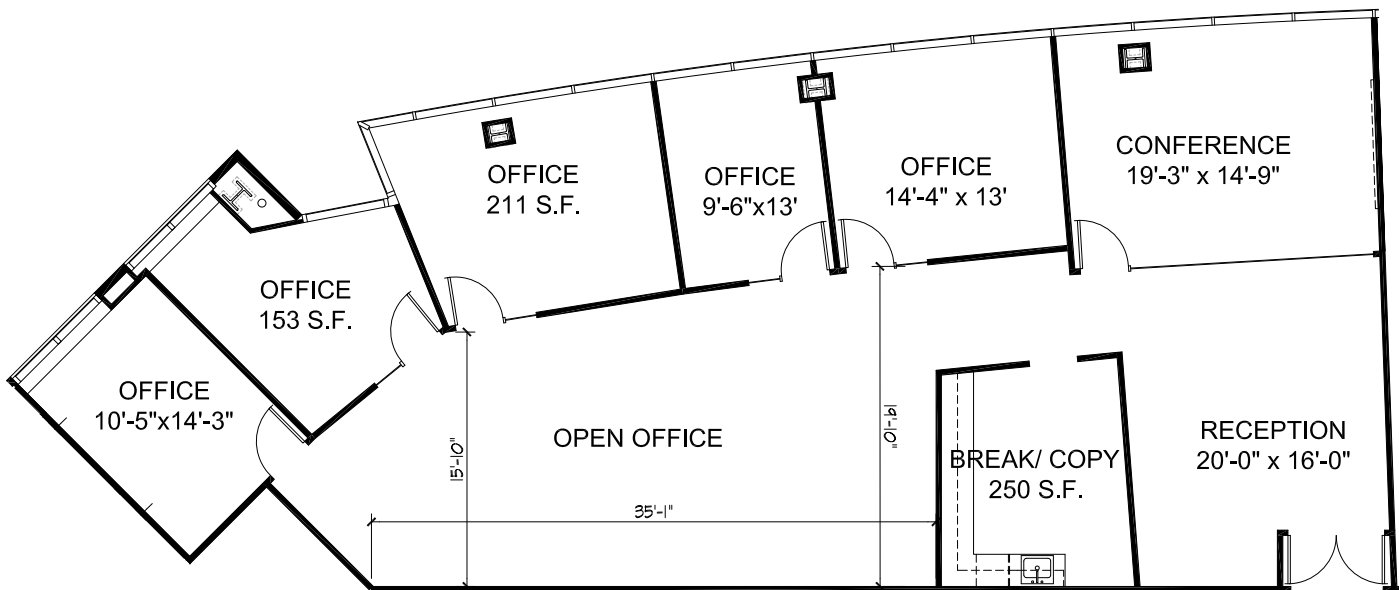
## 203: Suite # 680

±3,071 SF

CLICK HERE FOR



VIRTUAL TOUR



The distributor of this communication is performing acts for which a real estate license is required. The information contained herein has been obtained from sources deemed reliable but has not been verified and no guarantee, warranty or representation, either express or implied, is made with respect to such information. Terms of sale or lease and availability are subject to change or withdrawal without notice.

For leasing information, contact:

**JOSH ROWELL**

+1 650 358 5261

JRowell@ngkf.com

CA RE License #01236434

**CRAIG KALINOWSKI**

+1 650 358 5287

CKalinowski@ngkf.com

CA RE License #01260870

**MATT WINTERS**

+1 650 688 8490

Matt.Winters@ngkf.com

CA RE License #01405284

NEWMARK



HUDSONPACIFICPROPERTIES.COM