



SEC 146TH STREET & QUAKER AVENUE

Lubbock, TX 79424

LAND



QUICK FACTS



PURCHASE PRICE
\$8.00 per SF



TOTAL ACREAGE
2.4 & 3.8 AC



ZONING
Commercial

CBCWORLDWIDE.COM

Beau Tucker, CCIM
806.470.3944
BTucker@CBCWorldwide.com

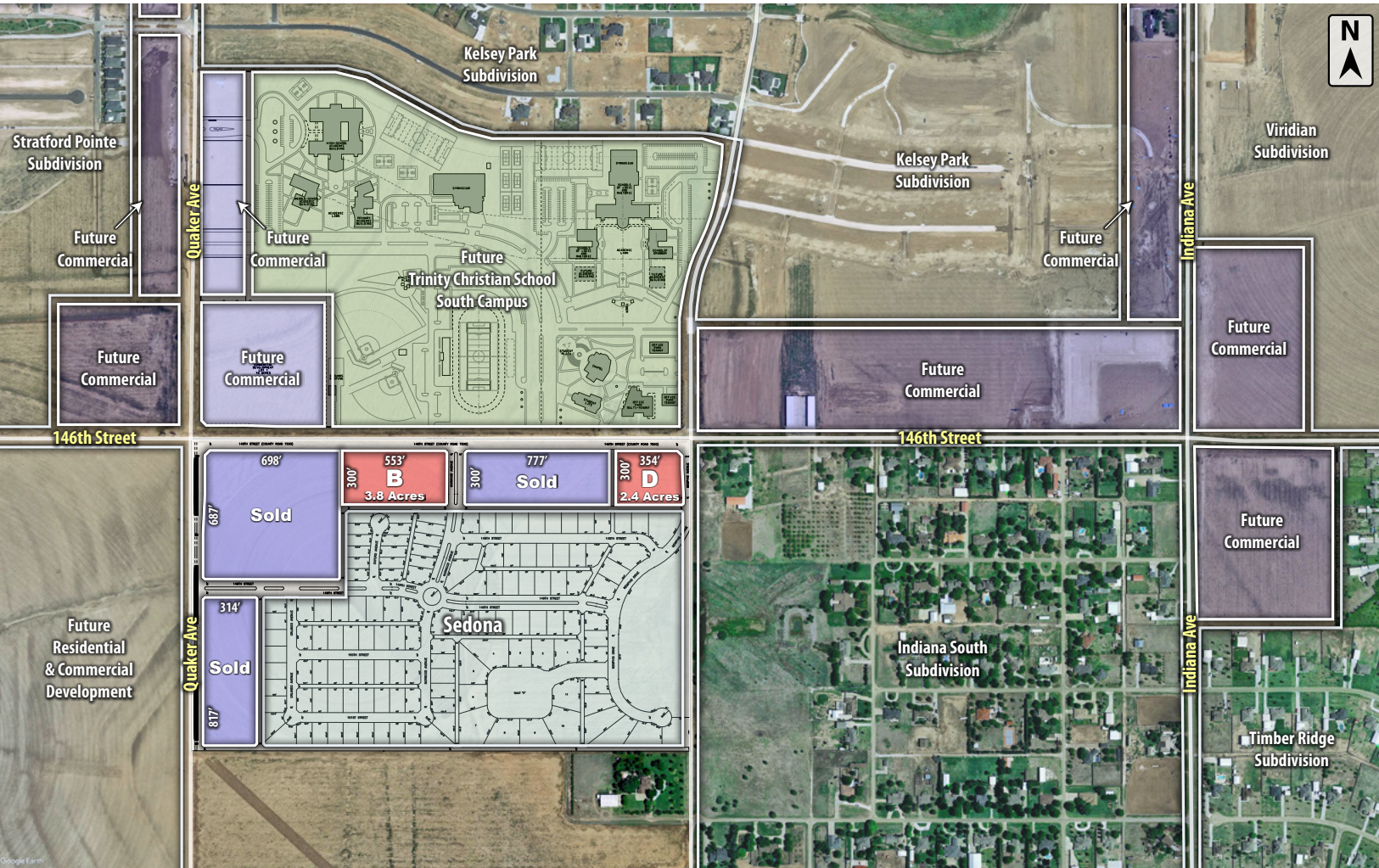


**COLDWELL
BANKER
COMMERCIAL**

CAPITAL ADVISORS



Trade Area & Information



LOCATION

This property sits at the southeast corner of 146th Street and Quaker Avenue.

DESCRIPTION

A large development tract in the quickly growing south Lubbock area. Conveniently located in the Cooper School District across the street from the future south campus of Trinity Christian School and only 1-mile from the future Loop 88.

Property is not in the floodplain.

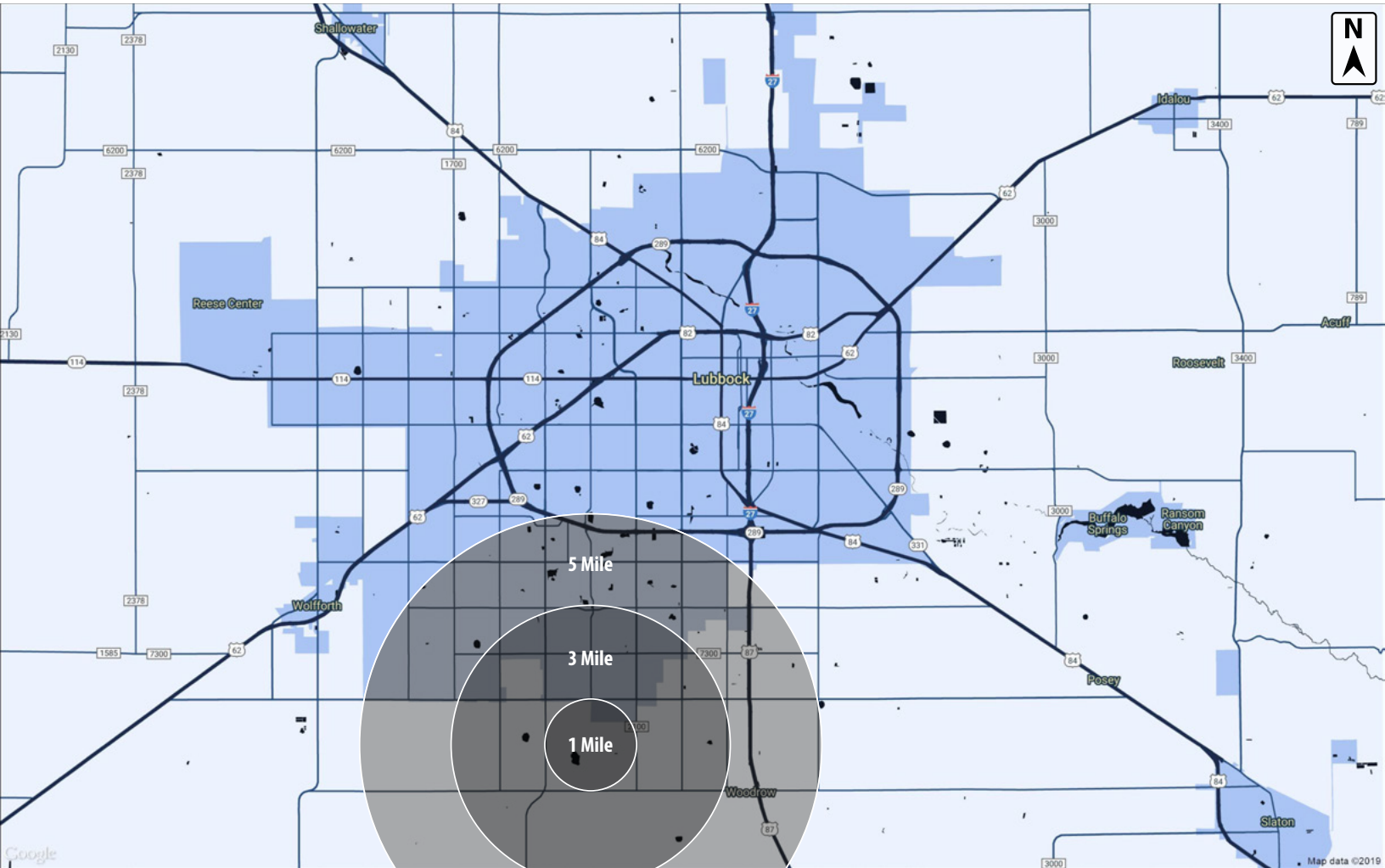
OPTIONS

- Tract A - 11.0 Acres - Sold
- Tract B - 3.8 Acres - \$8.00 per Square Foot - Zoning GO
- Tract C - 5.4 Acres - Sold
- Tract D - 2.4 Acres - \$8.00 per Square Foot - Zoning GO
- Tract E - 5.9 Acres - Sold





Demographics



POPULATION

	1 MILE	3 MILES	5 MILES
TOTAL POPULATION	287	7,355	54,992
MEDIAN AGE	36.6	40.4	39.3
MEDIAN AGE (MALE)	36.8	38.8	38.1
MEDIAN AGE (FEMALE)	36.0	41.8	40.0

HOUSEHOLDS & INCOME

	1 MILE	3 MILES	5 MILES
TOTAL HOUSEHOLDS	84	2,740	22,553
# OF PERSONS PER HH	3.4	2.7	2.4
AVERAGE HH INCOME	\$71,584	\$100,436	\$86,326
AVERAGE HOUSE VALUE	\$133,784	\$187,706	\$158,061

CBCWORLDWIDE.COM

Beau Tucker, CCIM
 806.470.3944
 BTucker@CBCWorldwide.com

©2019 Coldwell Banker Real Estate LLC, dba Coldwell Banker Commercial Capital Advisors. All rights reserved. Coldwell Banker Commercial® and the Coldwell Banker Commercial are registered service marks owned by Coldwell Banker Real Estate LLC. Coldwell Banker Real Estate LLC, dba Coldwell Banker Commercial Affiliates fully supports the principles of the Fair Housing Act and the Equal Opportunity Act. Each office is independently owned and operated. The information provided is deemed reliable, but it is not guaranteed to be accurate or complete, and it should not be relied upon as such. This information should be independently verified before any person enters into a transaction based upon it.



**COLDWELL
 BANKER
 COMMERCIAL**

CAPITAL ADVISORS