

667 MIAMISBURG-CENTERVILLE ROAD

DAYTON, OHIO 45459

FEATURES

- :: 5,600 single story building
- :: For Sale - \$575,000
- :: Sits on 3.08 acres
- :: Immediate occupancy
- :: Plenty of parking
- :: Exterior signage
- :: Plenty of offices
- :: Built in 1969
- :: Parcel # 067 3710 0053
- :: Close to restaurants, banks and retail



FOR MORE INFORMATION CONTACT:

Sue Zickefoose

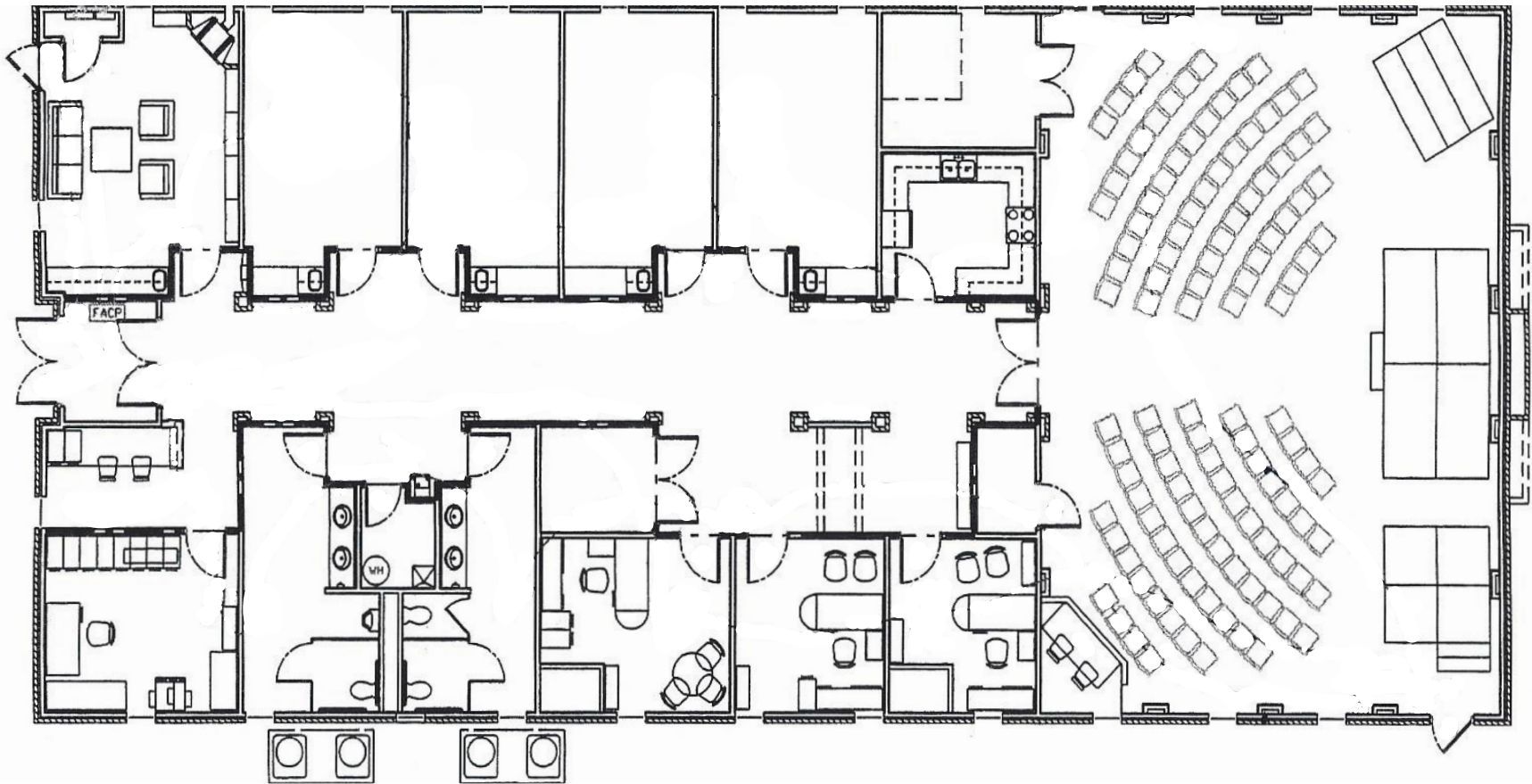
Senior Associate
+1 937 461 CBRE (2273)
sue.zickefoose@cbre.com

© 2015 CBRE, Inc. This information has been obtained from sources believed reliable. We have not verified it and make no guarantee, warranty or representation about it. Any projections, opinions, assumptions or estimates used are for example only and do not represent the current or future performance of the property. You and your advisors should conduct a careful, independent investigation of the property to determine to your satisfaction the suitability of the property for your needs. CBRE and the CBRE logo are service marks of CBRE, Inc. and/or its affiliated or related companies in the United States and other countries. All other marks displayed on this document are the property of their respective owners. Property image obtained by Google Earth in conjunction with CBRE licensing agreement. Photos herein are the property of their respective owners and use of these images without the express written consent of the owner is prohibited.

FOR SALE :: 667 MIAMISBURG-CENTERVILLE ROAD :: DAYTON, OH 45459



FLOOR PLAN



FOR MORE INFORMATION CONTACT:

Sue Zickefoose

Senior Associate

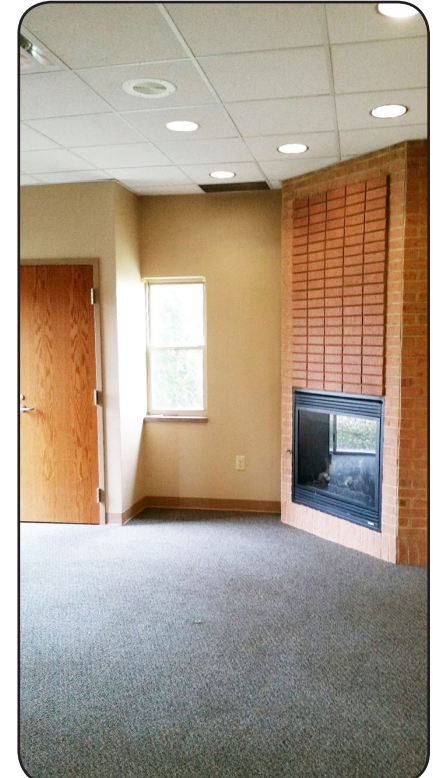
+1 937 461 CBRE (2273)

sue.zickefoose@cbre.com

FOR SALE :: 667 MIAMISBURG-CENTERVILLE ROAD :: DAYTON, OH 45459



INTERIOR IMAGES



© 2015 CBRE, Inc. This information has been obtained from sources believed reliable. We have not verified it and make no guarantee, warranty or representation about it. Any projections, opinions, assumptions or estimates used are for example only and do not represent the current or future performance of the property. You and your advisors should conduct a careful, independent investigation of the property to determine to your satisfaction the suitability of the property for your needs. CBRE and the CBRE logo are service marks of CBRE, Inc. and/or its affiliated or related companies in the United States and other countries. All other marks displayed on this document are the property of their respective owners. Property image obtained by Google Earth in conjunction with CBRE licensing agreement. Photos herein are the property of their respective owners and use of these images without the express written consent of the owner is prohibited.

FOR SALE :: 667 MIAMISBURG-CENTERVILLE ROAD :: DAYTON, OH 45459

AERIAL



2015 Estimated Demographics	1 mile	3 miles	5 miles
POPULATION	8,742	58,998	156,959
AVERAGE HOUSEHOLD INCOME	\$67,966	\$76,512	\$75,264

FOR MORE INFORMATION CONTACT:

Sue Zickefoose

Senior Associate

+1 937 461 CBRE (2273)

sue.zickefoose@cbre.com

CBRE | 130 West Second Street | Suite 1000 | Dayton, Ohio 45402 | www.cbre.com/dayton

© 2015 CBRE, Inc. This information has been obtained from sources believed reliable. We have not verified it and make no guarantee, warranty or representation about it. Any projections, opinions, assumptions or estimates used are for example only and do not represent the current or future performance of the property. You and your advisors should conduct a careful, independent investigation of the property to determine to your satisfaction the suitability of the property for your needs. CBRE and the CBRE logo are service marks of CBRE, Inc. and/or its affiliated or related companies in the United States and other countries. All other marks displayed on this document are the property of their respective owners. Property image obtained by Google Earth in conjunction with CBRE licensing agreement. Photos herein are the property of their respective owners and use of these images without the express written consent of the owner is prohibited.

