

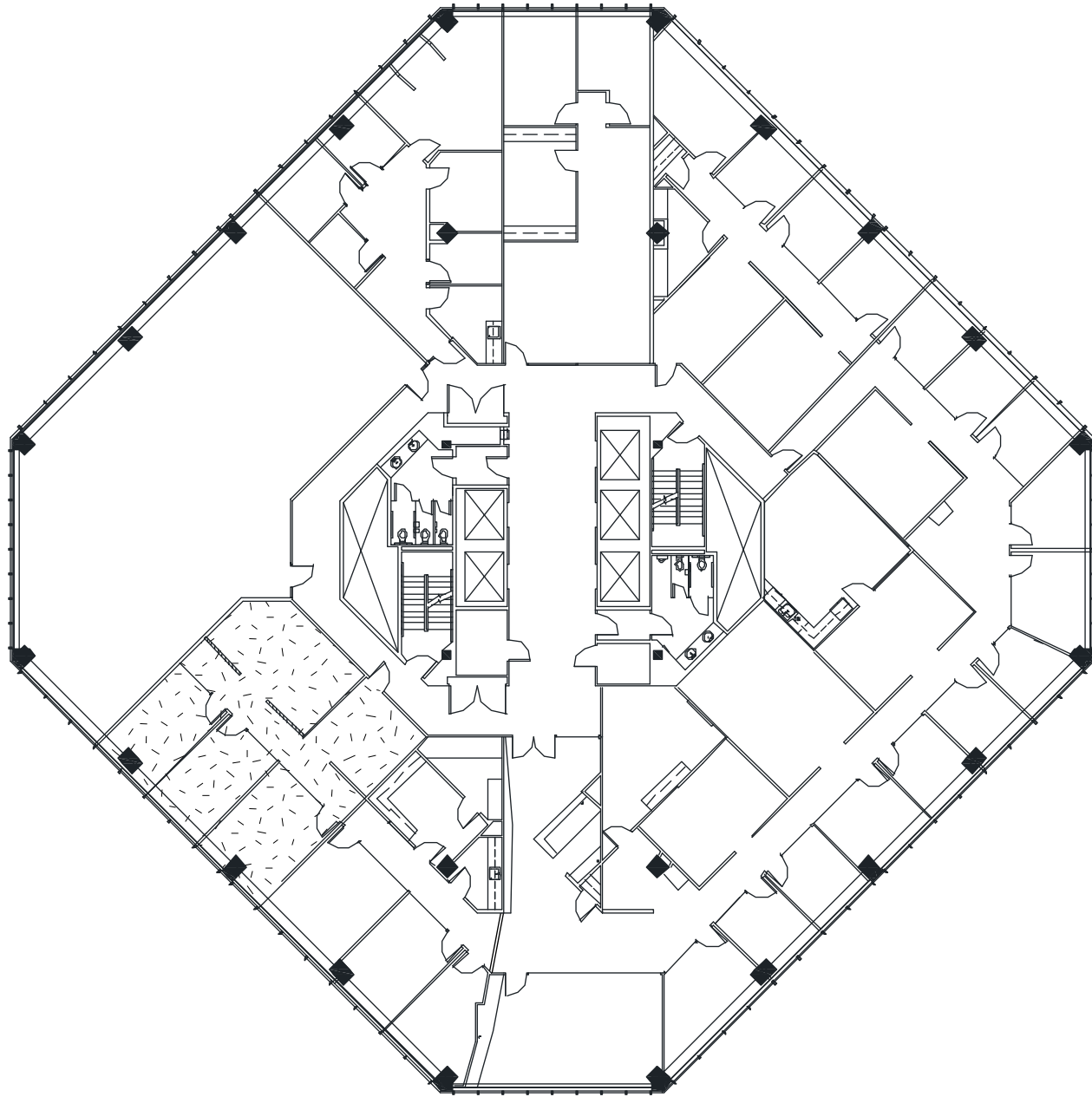
One Pacific Square

Suite 106: 3,171 rsf

825 NE Multnomah, Suite 1275, Portland, OR 97232 | P. (503) 233-4048 | F. (503) 231-3943 | www.LangleyInvestmentProperties.com



L A N G L E Y



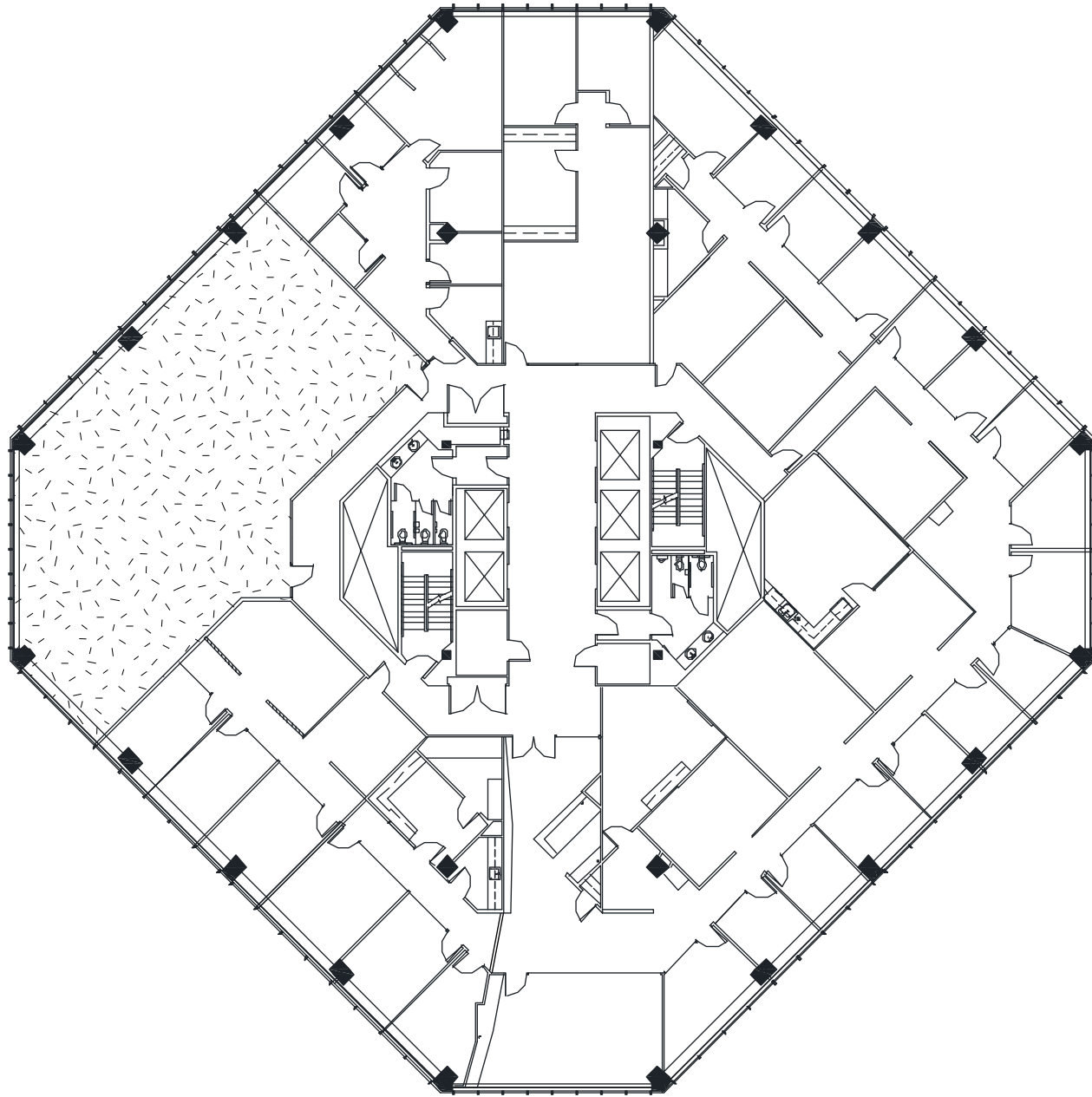
One Pacific Square

Suite 605: 1,272 rsf

825 NE Multnomah, Suite 1275, Portland, OR 97232 | P. (503) 233-4048 | F. (503) 231-3943 | www.LangleyInvestmentProperties.com



LANGLEY



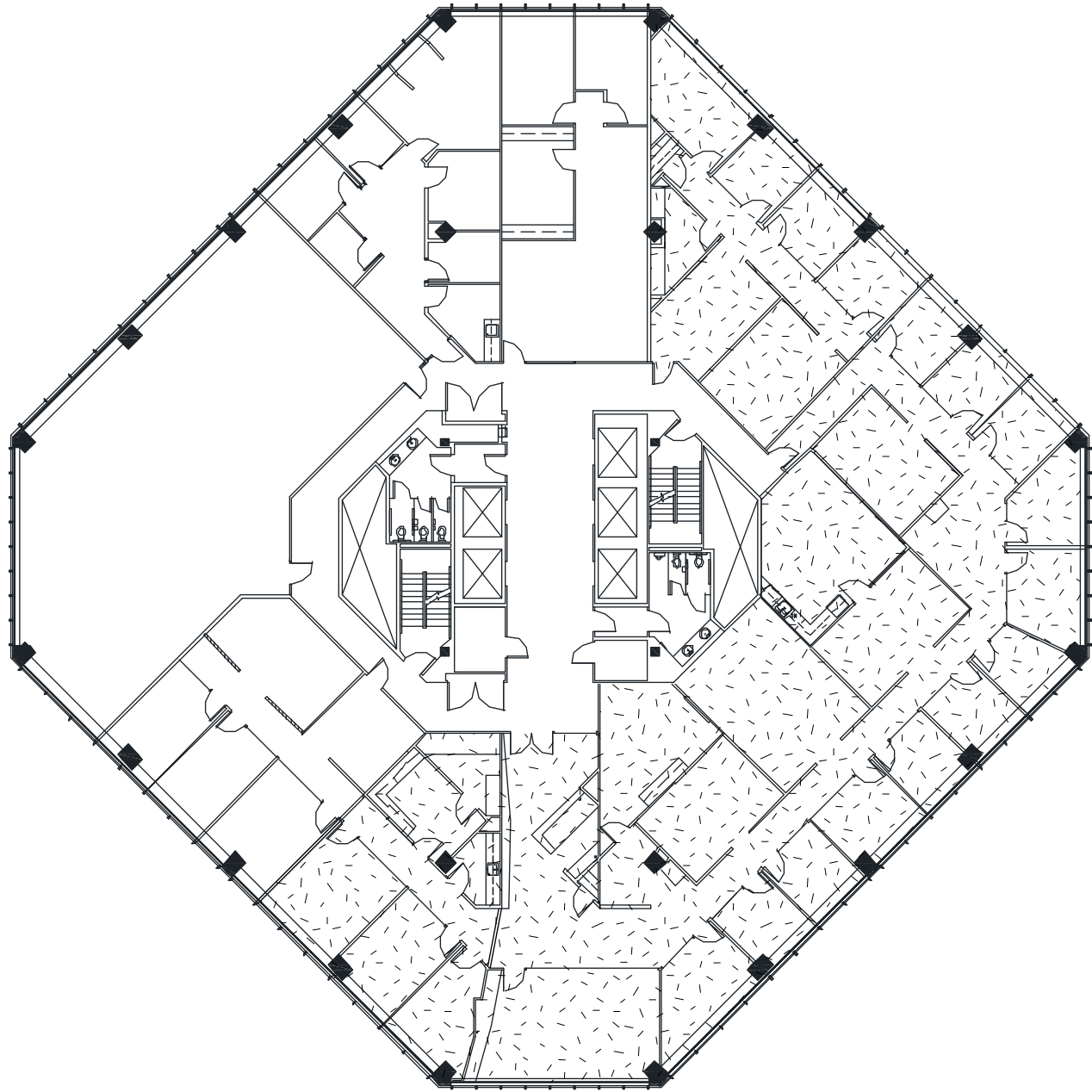
One Pacific Square

Suite 640: 2,829 rsf

825 NE Multnomah, Suite 1275, Portland, OR 97232 | P. (503) 233-4048 | F. (503) 231-3943 | www.LangleyInvestmentProperties.com



LANGLEY



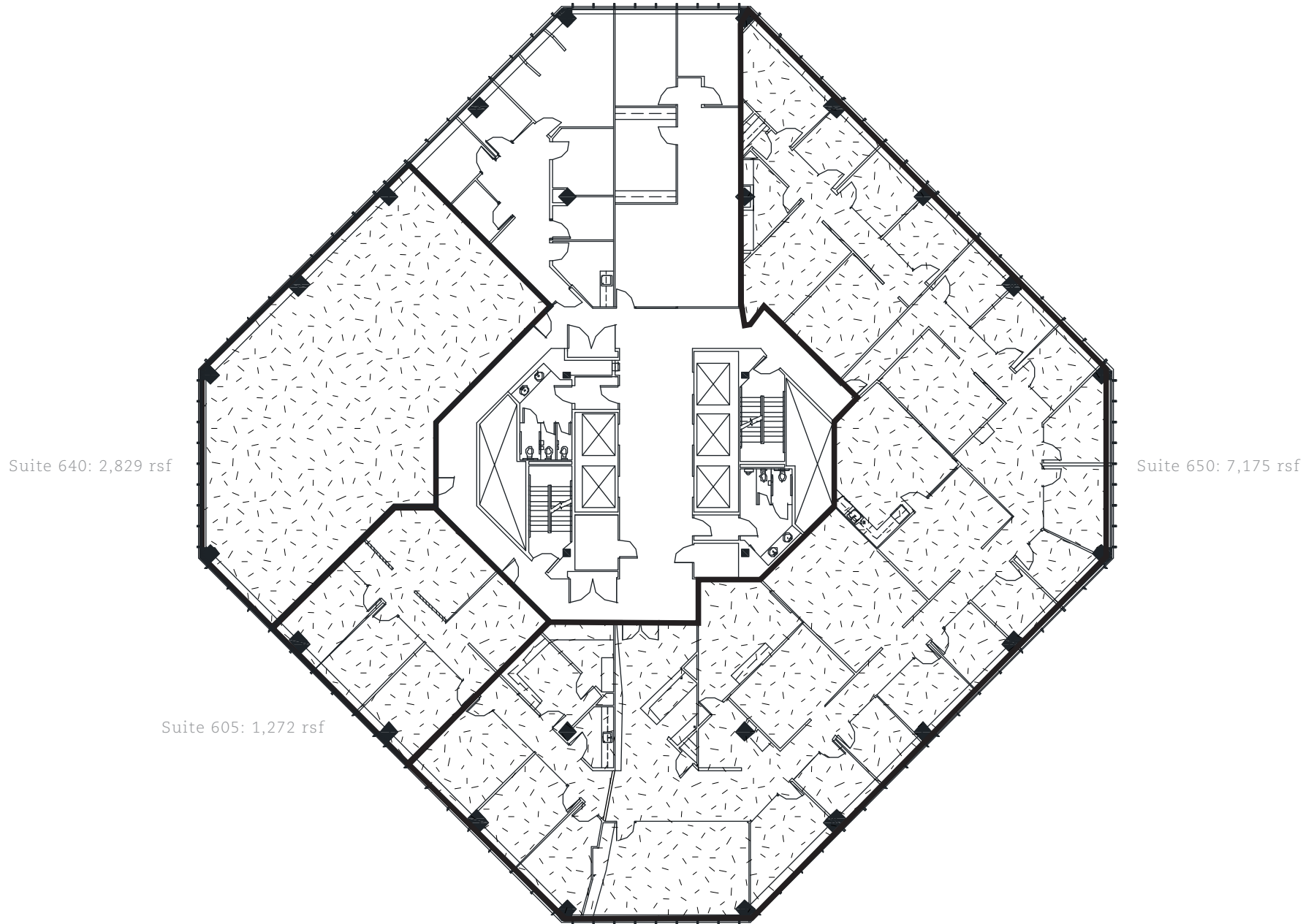
One Pacific Square

Suite 650: 7,175 rsf

825 NE Multnomah, Suite 1275, Portland, OR 97232 | P. (503) 233-4048 | F. (503) 231-3943 | www.LangleyInvestmentProperties.com



LANGLEY

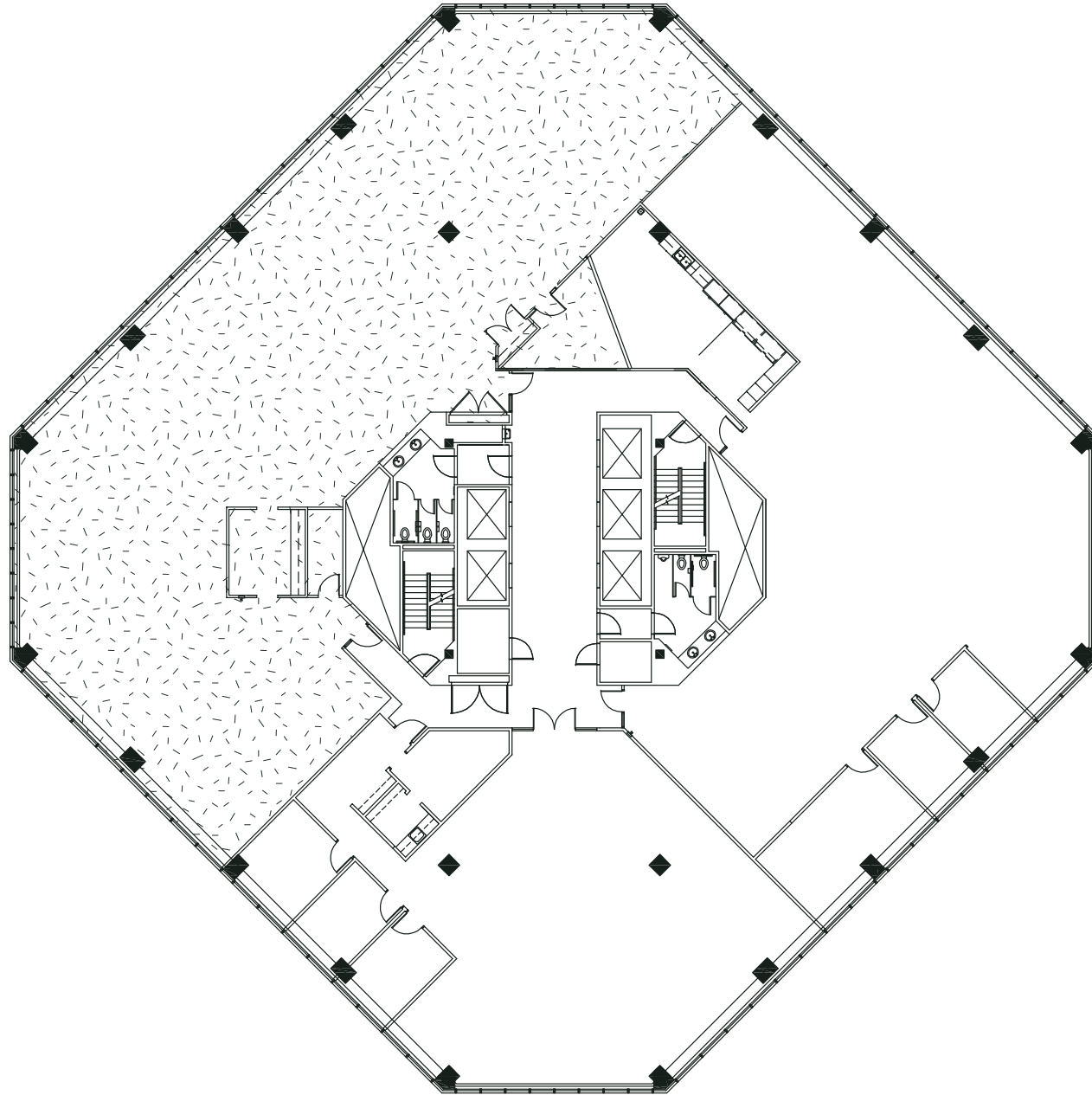


One Pacific Square Sixth Floor Availability

825 NE Multnomah, Suite 1275, Portland, OR 97232 | P. (503) 233-4048 | F. (503) 231-3943 | www.LangleyInvestmentProperties.com



L A N G L E Y



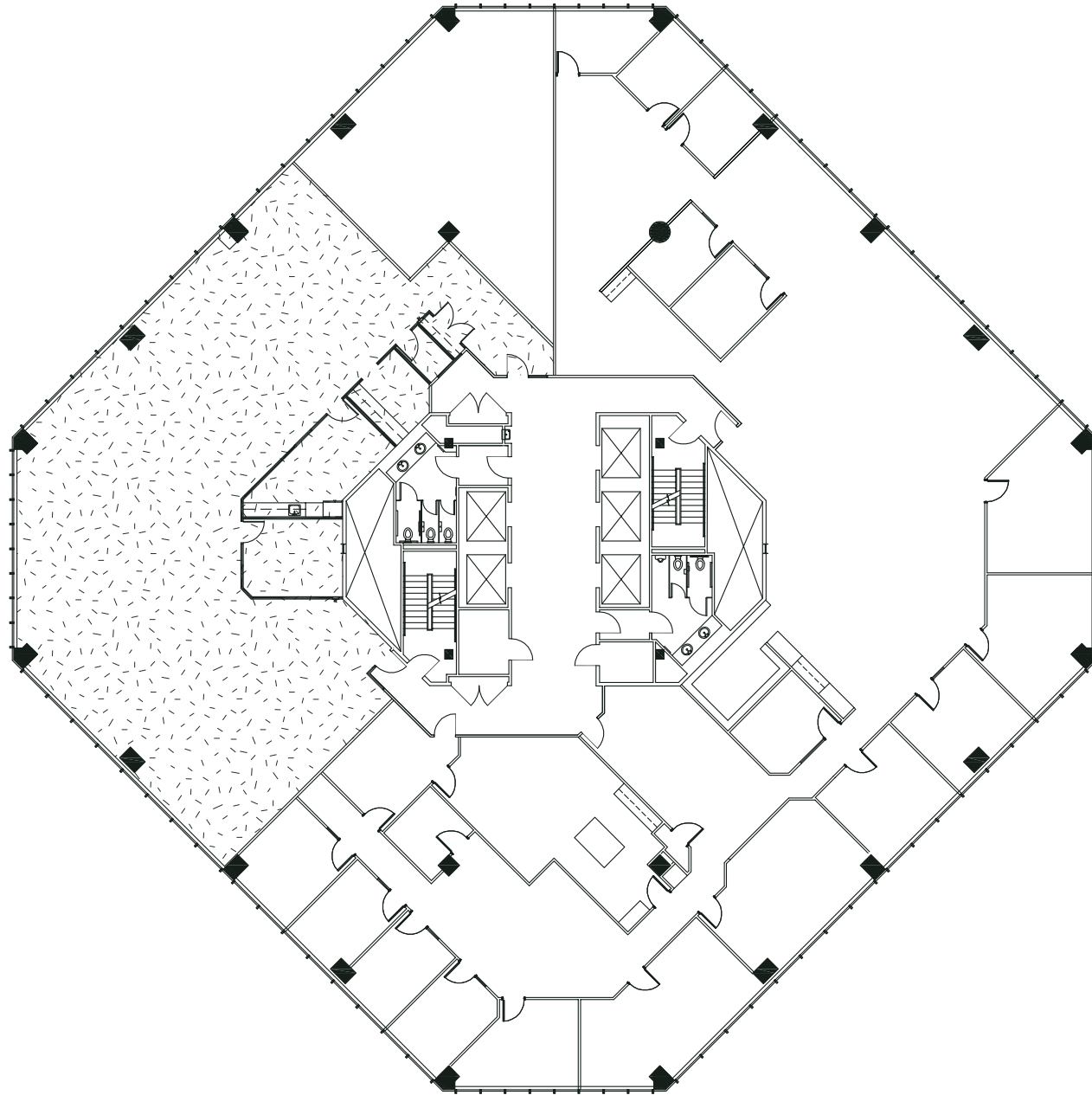
One Pacific Square

Suite 940: 6,781 rsf

825 NE Multnomah, Suite 1275, Portland, OR 97232 | P. (503) 233-4048 | F. (503) 231-3943 | www.LangleyInvestmentProperties.com



L A N G L E Y



One Pacific Square

Suite 1050: 4,530 rsf

825 NE Multnomah, Suite 1275, Portland, OR 97232 | P. (503) 233-4048 | F. (503) 231-3943 | www.LangleyInvestmentProperties.com



L A N G L E Y