

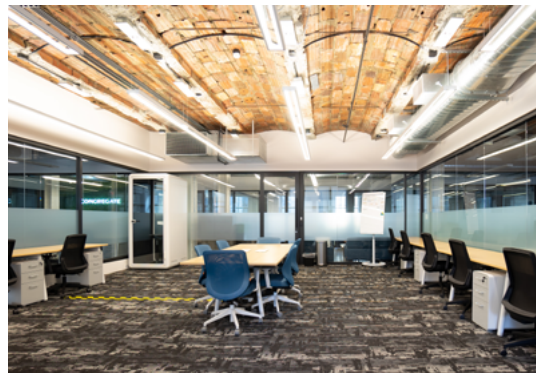
 **INDUSTRIOUS**

Industrious Bryant Park off Fifth

25 W. 39TH STREET
NEW YORK, NEW YORK



The Workplace Experience — Redefined



[CLICK TO VIEW VIRTUAL TOUR](#)

Justin Halpern
212 841 7543
justin.halpern@cushwake.com

Dale Schlather
212 841 5979
dale.schlather@cushwake.com

Matthias Li
212 841 7712
matthias.li@cushwake.com

Ed Wartels
212 841 7541
ed.wartels@cushwake.com

Gregory Herman
212 841 7828
greg.herman@cushwake.com

Jack Ortlieb
212 841 7975
jack.ortlieb@cushwake.com



©2020 Cushman & Wakefield. All rights reserved. The information contained in this communication is strictly confidential. This information has been obtained from sources believed to be reliable but has not been verified. NO WARRANTY OR REPRESENTATION, EXPRESS OR IMPLIED, IS MADE AS TO THE CONDITION OF THE PROPERTY (OR PROPERTIES) REFERENCED HEREIN OR AS TO THE ACCURACY OR COMPLETENESS OF THE INFORMATION CONTAINED HEREIN, AND SAME IS SUBMITTED SUBJECT TO ERRORS, OMISSIONS, CHANGE OF PRICE, RENTAL OR OTHER CONDITIONS, WITHDRAWAL WITHOUT NOTICE, AND TO ANY SPECIAL LISTING CONDITIONS IMPOSED BY THE PROPERTY OWNER(S). ANY PROJECTIONS, OPINIONS OR ESTIMATES ARE SUBJECT TO UNCERTAINTY AND DO NOT SIGNIFY CURRENT OR FUTURE PROPERTY PERFORMANCE.

INDUSTRIOUS

THE INDUSTRIOUS DIFFERENCE



**ENHANCED
CLEANING
PROTOCOLS**



**SPACES
THAT SHAPE
SUCCESS**



**MEMBERSHIP
BUILT FOR
FLEXIBILITY**

[CLICK TO VIEW OUR
Safety Guidelines](#)



Offices

An enclosed, locked, private office, located in an Industrious location. Fully-furnished and move-in ready with access to premium services and amenities.

- Fully-furnished with Herman Miller chairs
- 24/7 building access
- Nationwide network

Dedicated Desks

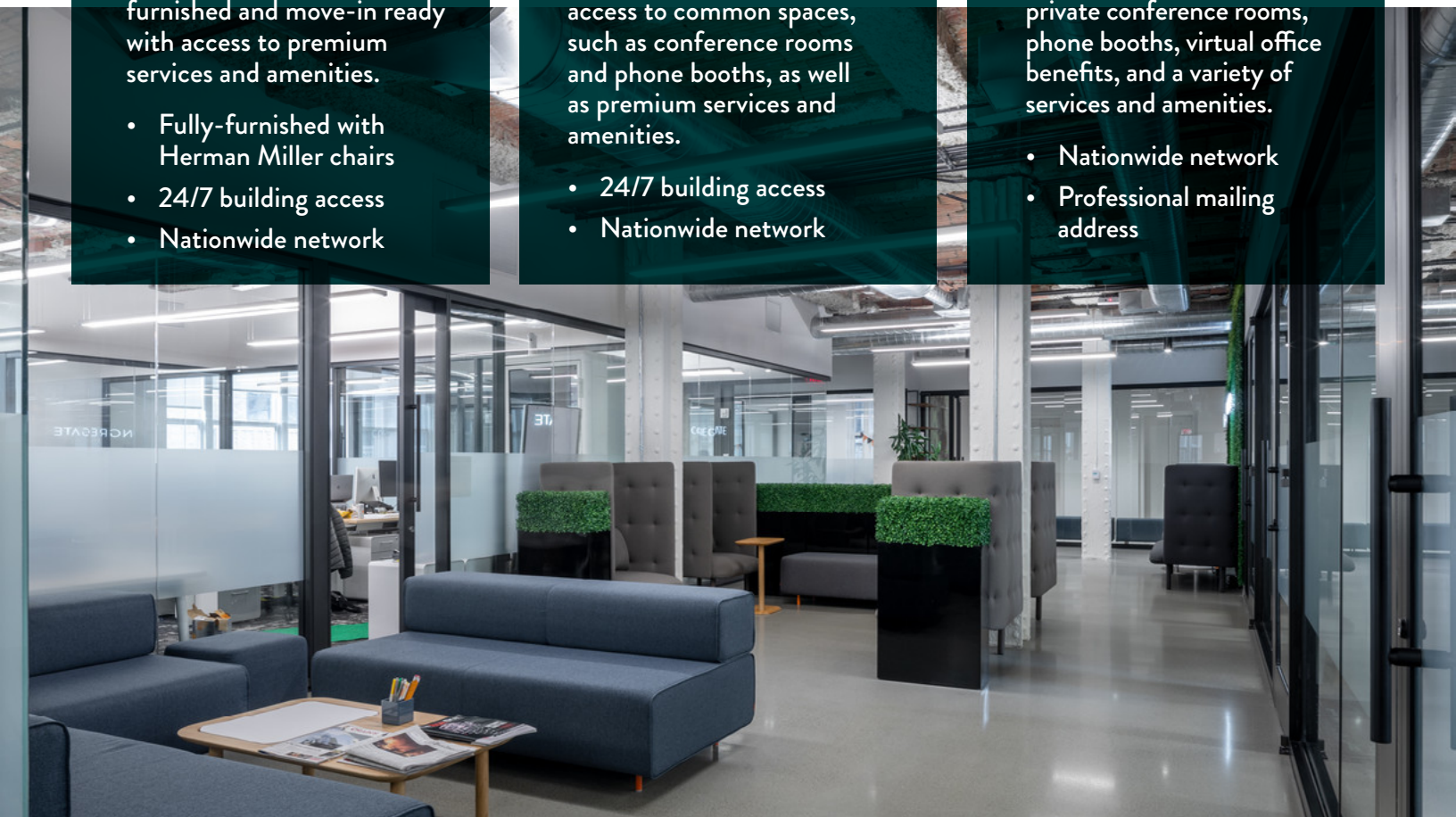
A desk of your own within a locked, private office. Comes move-in ready, with access to common spaces, such as conference rooms and phone booths, as well as premium services and amenities.

- 24/7 building access
- Nationwide network

Oasis Memberships

Work from any Industrious location while only paying for the days you use. Access private conference rooms, phone booths, virtual office benefits, and a variety of services and amenities.

- Nationwide network
- Professional mailing address



INDUSTRIOUS

Ask about our current no-obligation solutions that equip occupiers to best weather uncertainty.

All-Inclusive Memberships

AMENITIES



Wellness Room



Private Conference Rooms



Office Supplies



Unlimited Color Printing



Fast, Secure Wi-Fi

SERVICES



Mail & Packaging



Community Events



Daily Breakfast & Craft Coffee



Dedicated Community Manager



Professional-Grade Cleaning

BUILDING / NEIGHBORHOOD



Fitness Center



Event Space



Dining Options

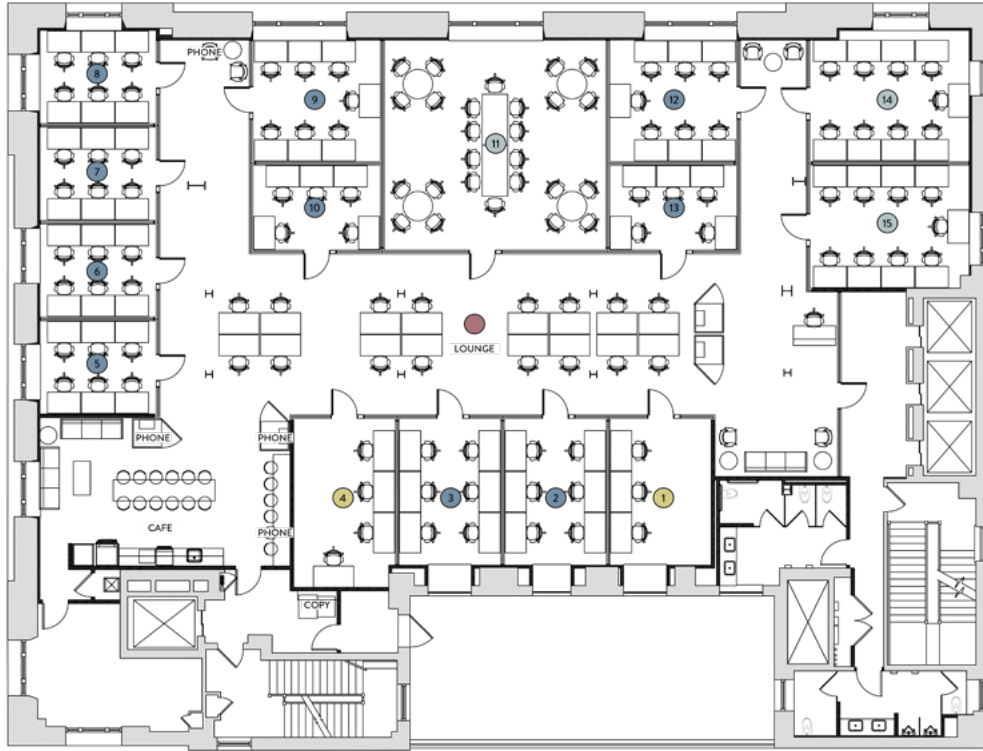


Outdoor Space

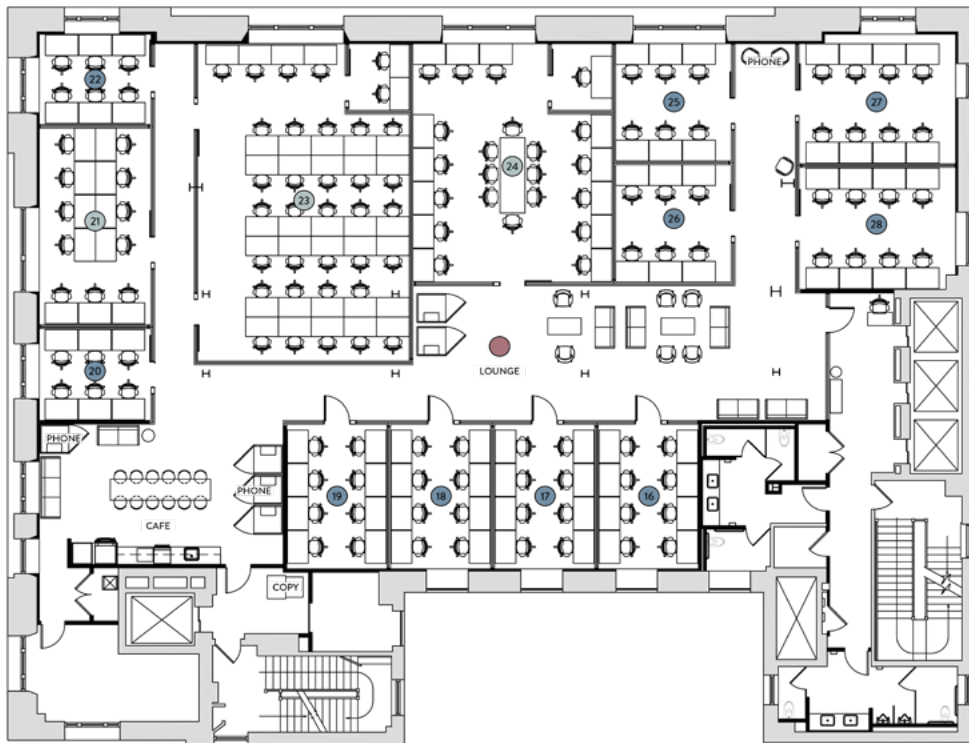


Retail

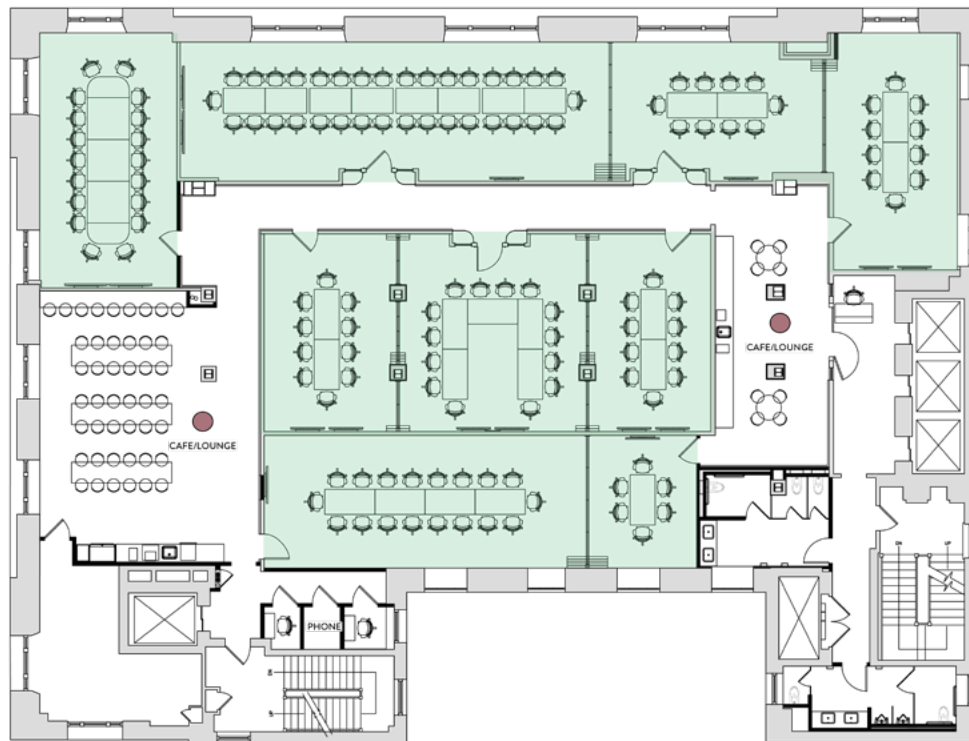
7th Floor



8th Floor



9th Floor



Justin Halpern
212 841 7543
justin.halpern@cushwake.com

Dale Schlather
212 841 5979
dale.schlather@cushwake.com

Matthias Li
212 841 7712
matthias.li@cushwake.com

Ed Wartels
212 841 7541
ed.wartels@cushwake.com

Gregory Herman
212 841 7828
greg.herman@cushwake.com

Jack Ortlieb
212 841 7975
jack.ortlieb@cushwake.com