

2.37 ACRES COMMERCIAL LAND | SAN JACINTO, CA

SEC OF E. 7TH STREET AND RAMONA EXPRESSWAY



\$720,000

HIGHLIGHTS:

- Previously approved and rough-graded retail development with fast food drive through (expired)
- Signalized Corner
- Utilities stubbed to site (verify)
- Traffic Counts:
13,305 CPD on Ramona Expy
4,796 CPD on 7th St
(source CoStar 2015)
- No competing retail services nearby

2015 Demographics

	1 mile	3 mile	5 mile
Population	9,409	29,977	72,102
Households	2,973	9,490	23,384
Avg. HH Income	\$54,156	\$51,854	\$49,656

Source: CoStar

2.37 ACRES COMMERCIAL LAND | SAN JACINTO, CA

SEC OF E. 7TH STREET AND RAMONA EXPRESSWAY

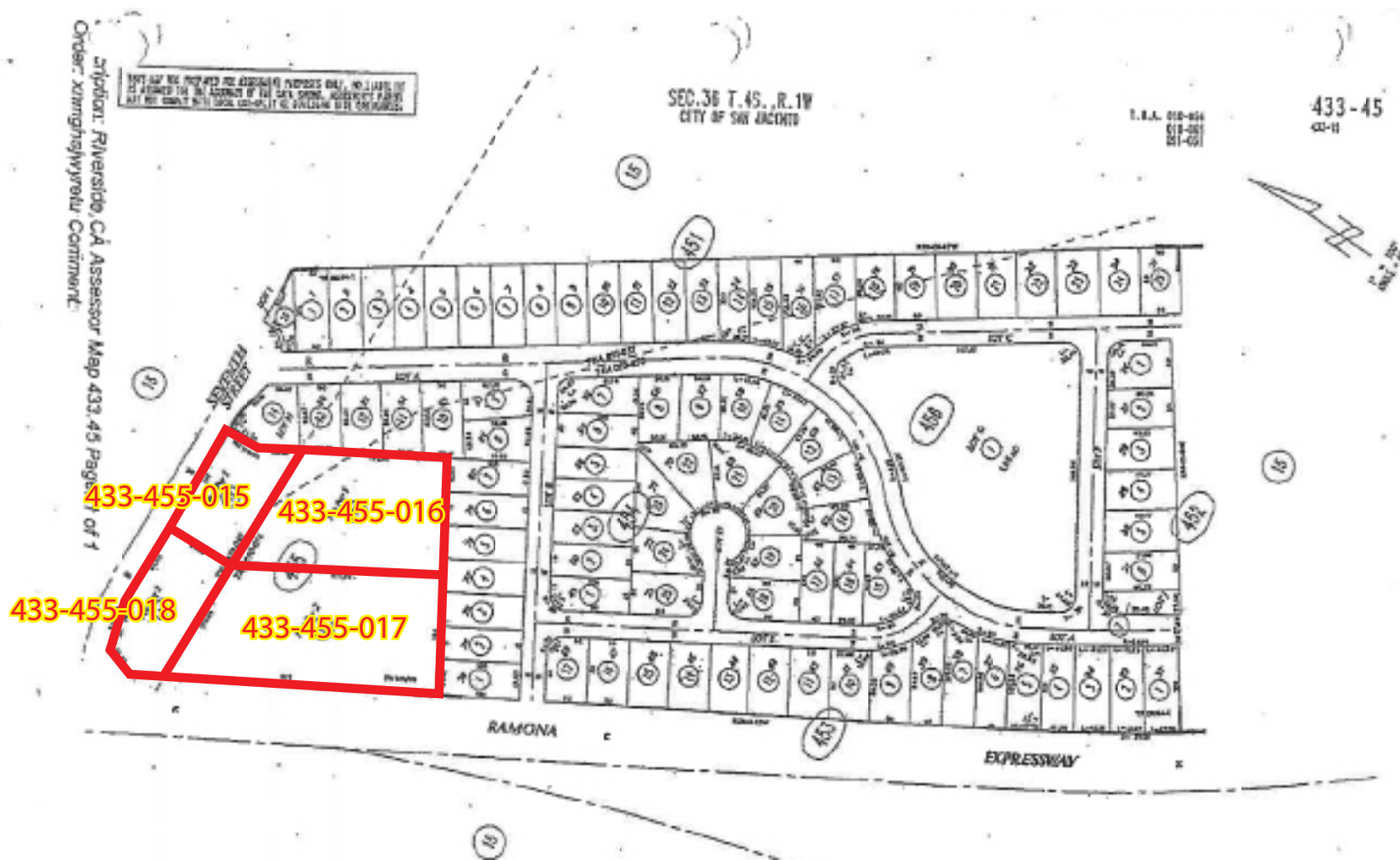
PROPOSED RENDERING



2.37 ACRES COMMERCIAL LAND | SAN JACINTO, CA

SEC OF E. 7TH STREET AND RAMONA EXPRESSWAY

PROPOSED SITE PLAN



2.37 ACRES COMMERCIAL LAND | SAN JACINTO, CA

SEC OF E. 7TH STREET AND RAMONA EXPRESSWAY

PROPOSED SITE PLAN

