

FOR LEASE - WAREHOUSE/OFFICE

FROM ±8,503 SF TO ±66,775 SF

**660 NORTHWEST PEACOCK BOULEVARD
PORT ST LUCIE, FLORIDA 34986**



PROPERTY DESCRIPTION

- + ±66,775 SF Free Standing Warehouse Building situated on ±3.13 Acres
- + Building can be Subdivided into the following size increments:
 - ±8,503 SF
 - ±8,745 SF
 - ±15,671 SF
 - ±22,796 SF
 - ±28,258 SF up to ±66,775 SF
- + ±19' to ±21' Clear Ceiling Heights
- + Five (5) 12'x14' Grade Level Roll Up Doors
- + ±3,000 Amps of Three Phase Electric Service
- + Located in the Prime Industrial District in St. Lucie West with Easy Access to I-95 and Florida's Turnpike
- + Adjacent ±1.42 Acres Available for Lease for Expansion or Parking
- + Existing Second Floor Office Space: ±5,675 SF
- + Existing First Floor Office Space: ±5,482 SF



CONTACT

ROBERT SMITH

Executive Vice President
+1 561 707 5558
robert.c.smith@cbre.com

KIRK NELSON

Senior Vice President
+1 561 716 9936
kirk.nelson@cbre.com

CBRE, Inc. | Licensed Real Estate Broker

LEASE RATE - FROM \$7.50 SF NNN TO \$9.50 SF NNN
ESTIMATED OPERATING EXPENSES - \$3.00 SF CAM

-SUBJECT TO SIZE OF SPACE, CREDIT OF TENANT, REQUIRED IMPROVEMENTS, LEASE TERM, ETC.

±8,503 SF TO ±66,775 SF

FOR LEASE - WAREHOUSE/OFFICE

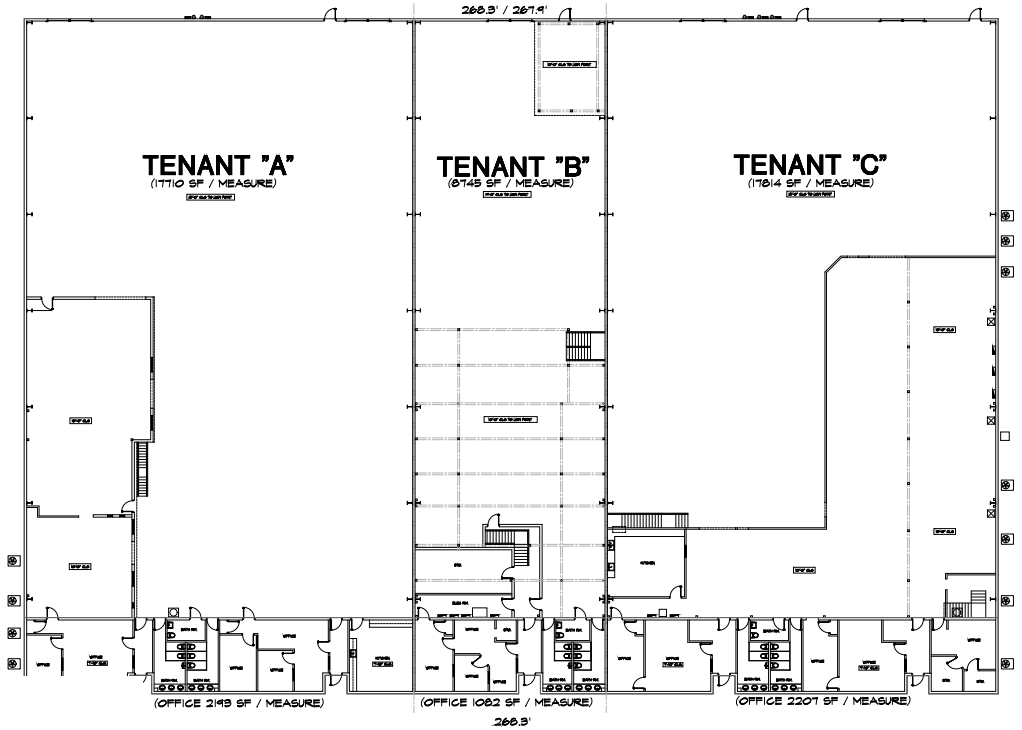
600

NW PEACOCK DRIVE
Port St Lucie, Florida 34986

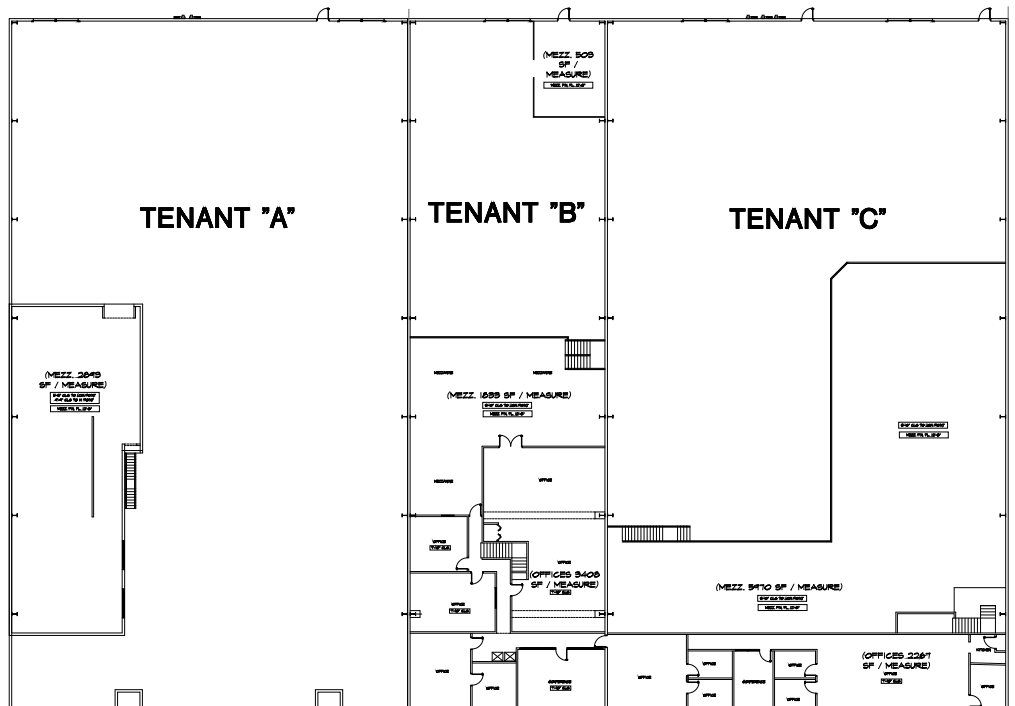
FLOOR PLANS

FLOOR PLANS SHOWING 5 SMALLER BAYS ALSO AVAILABLE

1ST FLOOR



2ND FLOOR



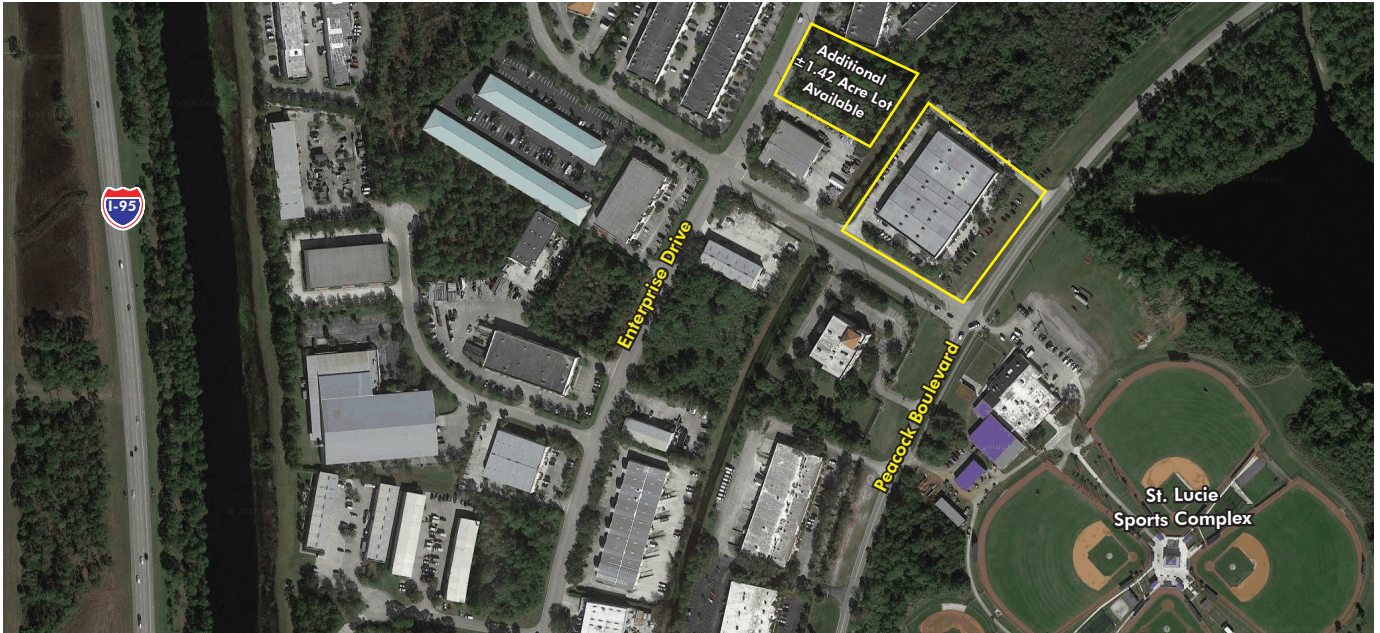
±8,503 SF TO ±66,775 SF

FOR LEASE - WAREHOUSE/OFFICE

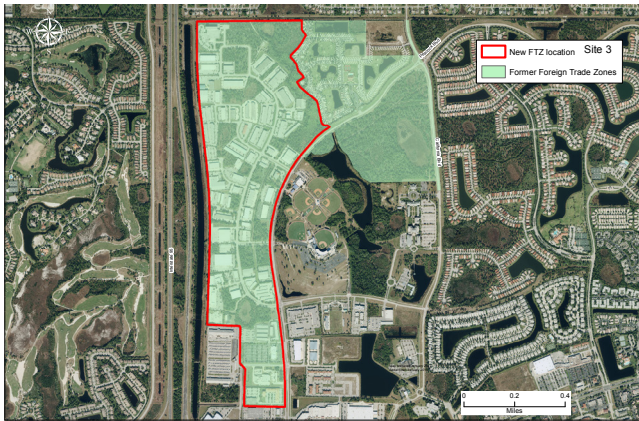
600

NW PEACOCK DRIVE
Port St Lucie, Florida 34986

LOCATIONAL MAP



FOREIGN TRADE ZONES



AERIAL



CONTACT

ROBERT SMITH

Executive Vice President
+1 561 707 5558
robert.c.smith@cbre.com

KIRK NELSON

Senior Vice President
+1 561 716 9936
kirk.nelson@cbre.com

CBRE, Inc. | Licensed Real Estate Broker

© 2019 CBRE, Inc. This information has been obtained from sources believed reliable. We have not verified it and make no guarantee, warranty or representation about it. Any projections, opinions, assumptions or estimates used are for example only and do not represent the current or future performance of the property. You and your advisors should conduct a careful, independent investigation of the property to determine to your satisfaction the suitability of the property for your needs. CBRE and the CBRE logo are service marks of CBRE, Inc. and/or its affiliated or related companies in the United States and other countries. All other marks displayed on this document are the property of their respective owners.

CBRE