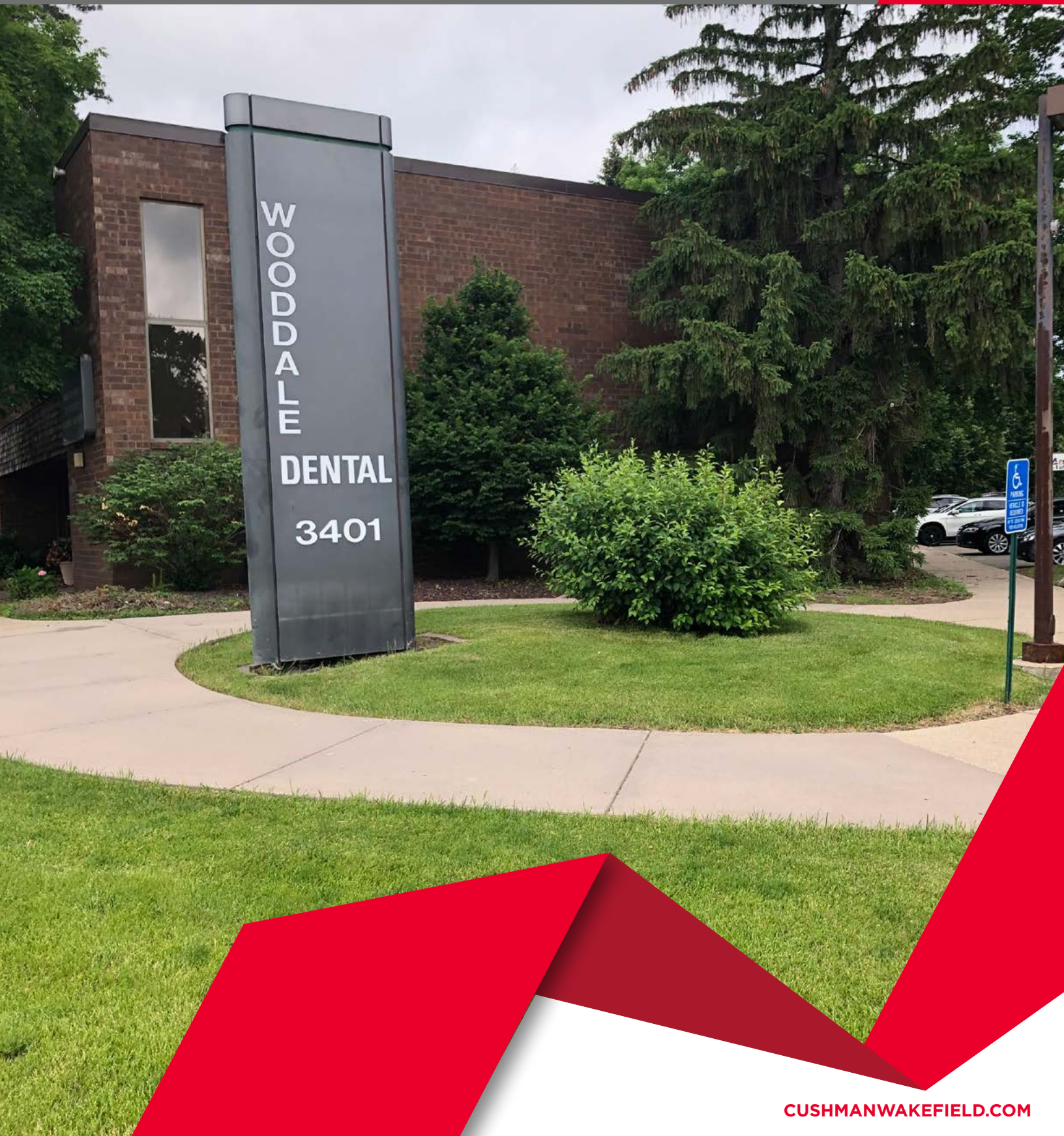


# WOODDALE DENTAL CENTER

3401 Wooddale Ave S, St. Louis Park, MN



3,378 SF FOR LEASE



# WOODDALE DENTAL CENTER

3401 Wooddale Ave S, St. Louis Park, MN

## PROPERTY FEATURES

- Two story building with lots of natural light
- Second floor dental space nicely built out
- All dental user building
- On busy intersection of Wooddale Avenue and Lake Street
- Monument signage available
- Ample parking
- Professionally managed by local owner



## DEMOGRAPHICS



TOTAL  
POPULATION



TOTAL  
BUSINESS



TOTAL  
EMPLOYEES

1 Mile

14,241

783

36,467

3 Miles

111,748

5,101

101,053

5 Miles

347,437

16,708

326,988

**Ann Stahley / Director** / [ann.stahley@cushwake.com](mailto:ann.stahley@cushwake.com) / +1 651 248 6946



## WOODDALE DENTAL CENTER

3401 Wooddale Ave S, St. Louis Park, MN

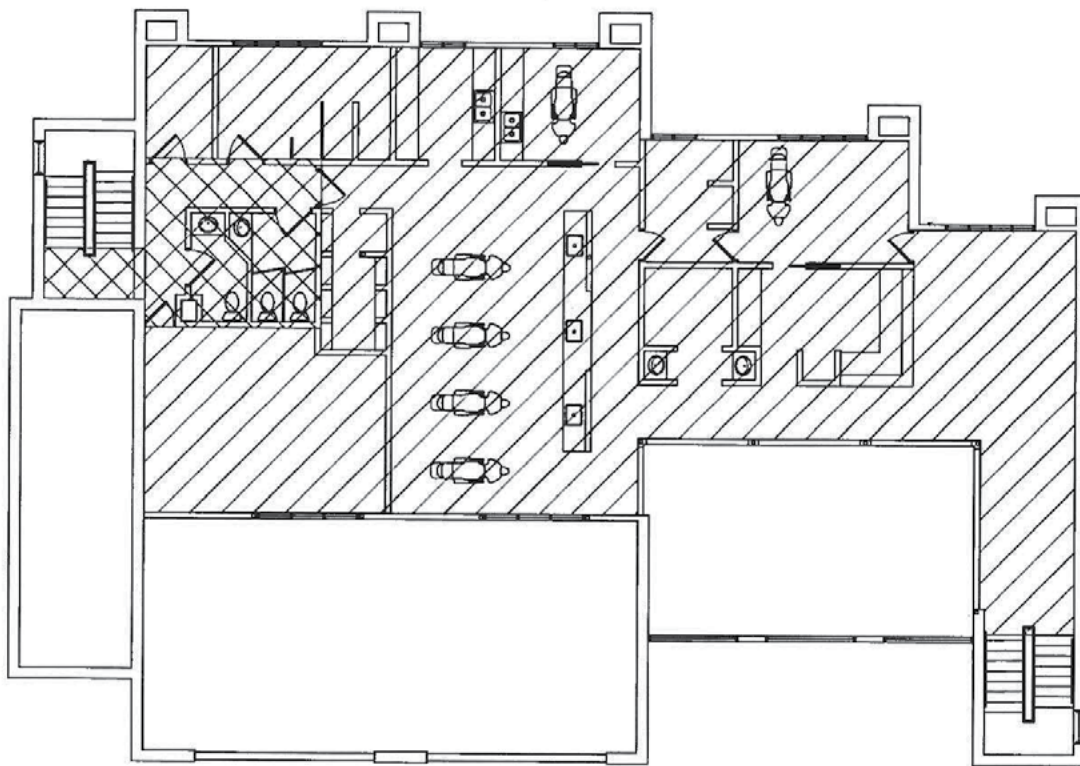


**Ann Stahley / Director** / [ann.stahley@cushwake.com](mailto:ann.stahley@cushwake.com) / +1 651 248 6946

# WOODDALE DENTAL CENTER

3401 Wooddale Ave S, St. Louis Park, MN

## FLOOR PLAN





## WOODDALE DENTAL CENTER

3401 Wooddale Ave S, St. Louis Park, MN

AERIAL

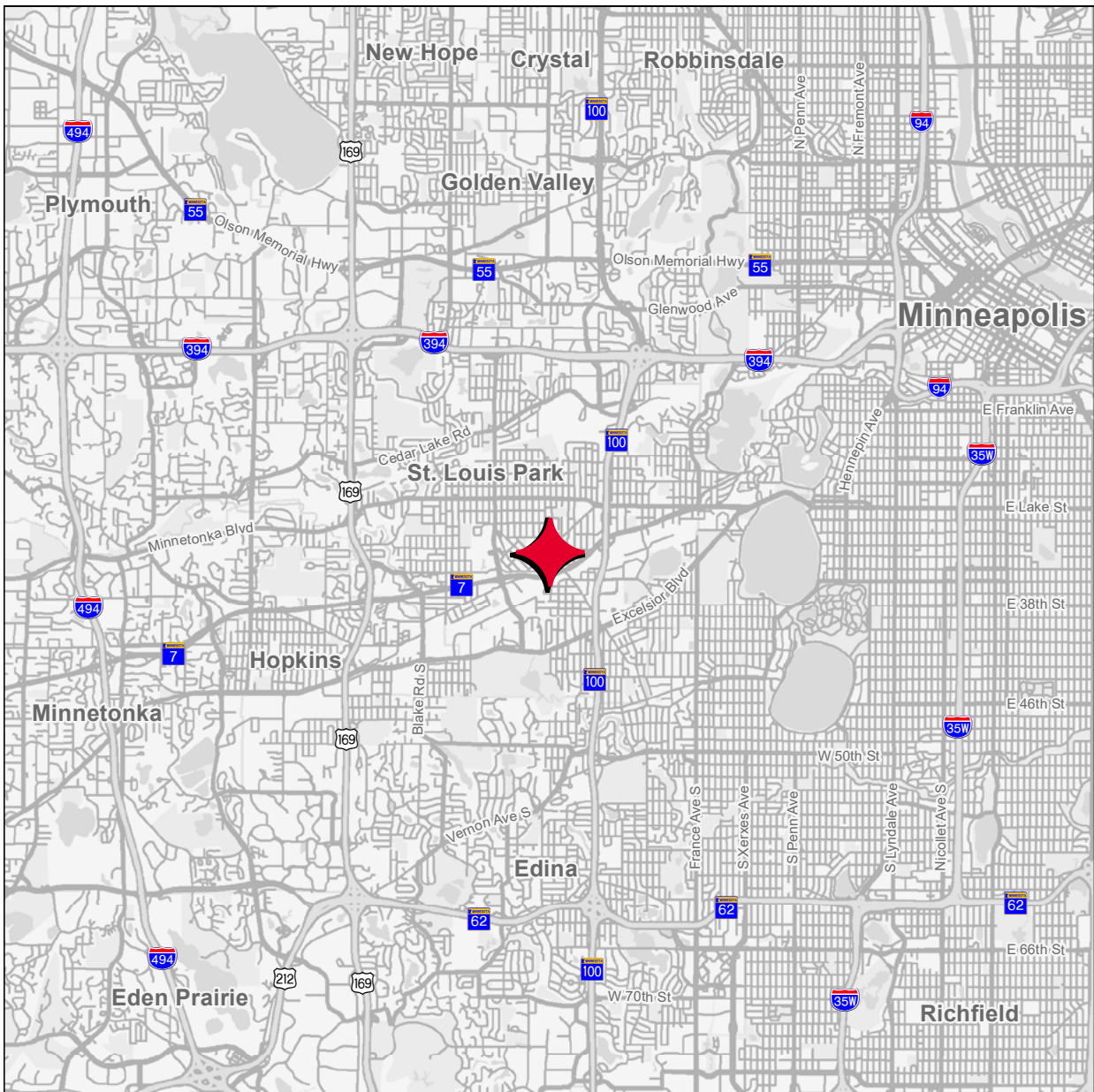


**Ann Stahley / Director** / [ann.stahley@cushwake.com](mailto:ann.stahley@cushwake.com) / +1 651 248 6946

# WOODDALE DENTAL CENTER

3401 Wooddale Ave S, St. Louis Park, MN

## LOCATION MAP



Ann Stahley / Director / [ann.stahley@cushwake.com](mailto:ann.stahley@cushwake.com) / +1 651 248 6946