

2070 BIDDLE AVENUE
WYANDOTTE, MICHIGAN

MEDICAL FOR LEASE
2,000-30,000 Square Feet Available

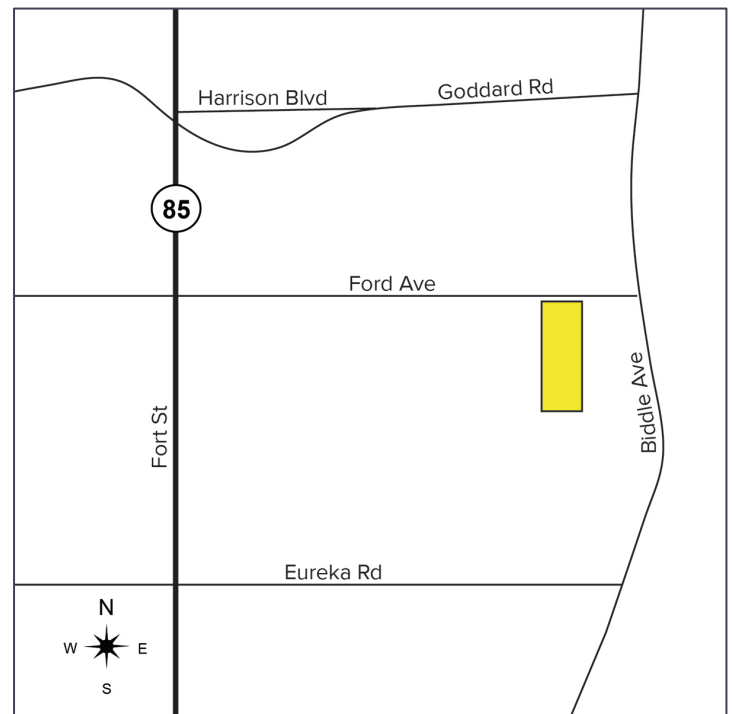


**SIGNATURE
ASSOCIATES**
KNOW SIGNATURE | KNOW RESULTS



PROPERTY FEATURES

- 2,000 – 30,000 square feet available
- Zoned PD (Plan Development District)
- Newly constructed 2-story professional/medical office planned for Fall 2023 completion
- Location near Henry Ford Wyandotte Hospital makes this ideal for medical use
- Lease Rate: \$22.00/sq.ft. NNN



For more information, please contact:

JUSTIN GAFFREY
(248) 799 3143
jgaffrey@signatureassociates.com

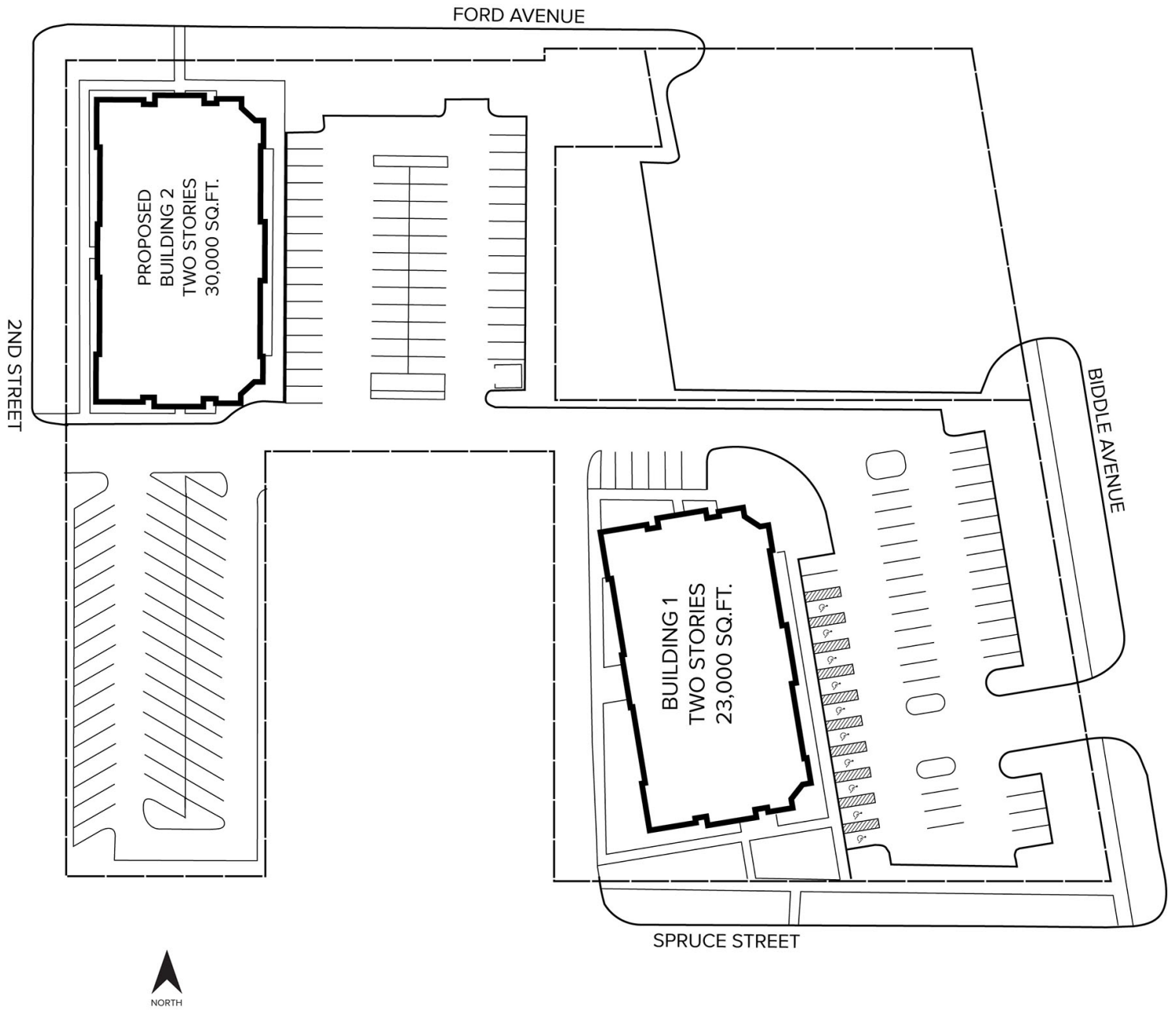
SIGNATURE ASSOCIATES
One Towne Square, Suite 1200
Southfield, MI 48076
www.signatureassociates.com

2070 Biddle Avenue - Wyandotte, Michigan

Medical For Sale or Lease

2,000 – 30,000
Square Feet
AVAILABLE

Site Plan



For more information, please contact:

JUSTIN GAFFREY
(248) 799 3143
jgaffrey@signatureassociates.com

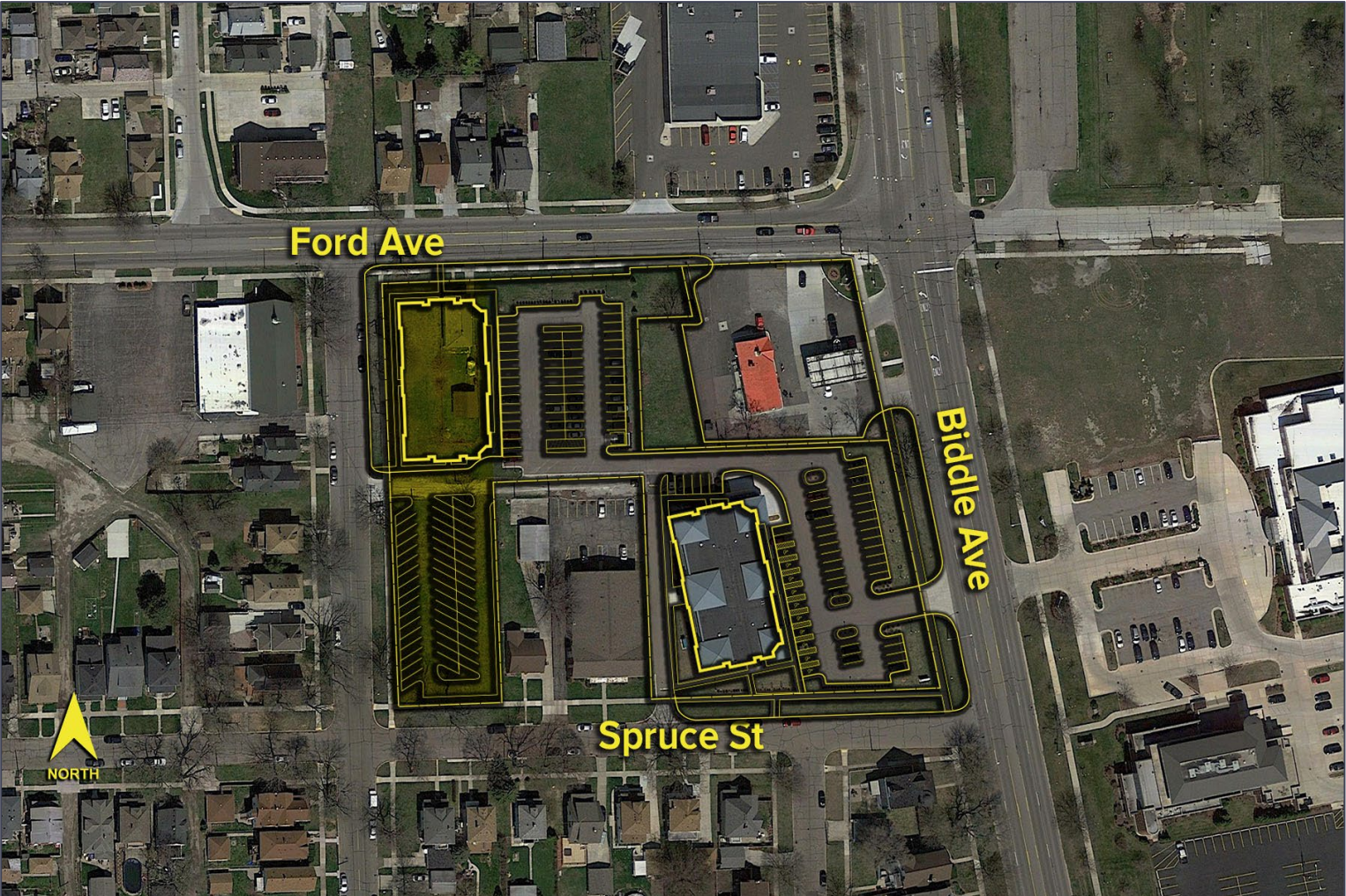
SIGNATURE ASSOCIATES
One Towne Square, Suite 1200
Southfield, MI 48076
www.signatureassociates.com

2070 Biddle Avenue - Wyandotte, Michigan

Medical For Sale or Lease

2,000 – 30,000
Square Feet
AVAILABLE

Aerial



For more information, please contact:

JUSTIN GAFFREY
(248) 799 3143
jgaffrey@signatureassociates.com

SIGNATURE ASSOCIATES
One Towne Square, Suite 1200
Southfield, MI 48076
www.signatureassociates.com

Information is subject to verification and no liability for errors or omissions is assumed. Price is subject to change and listing withdrawal.