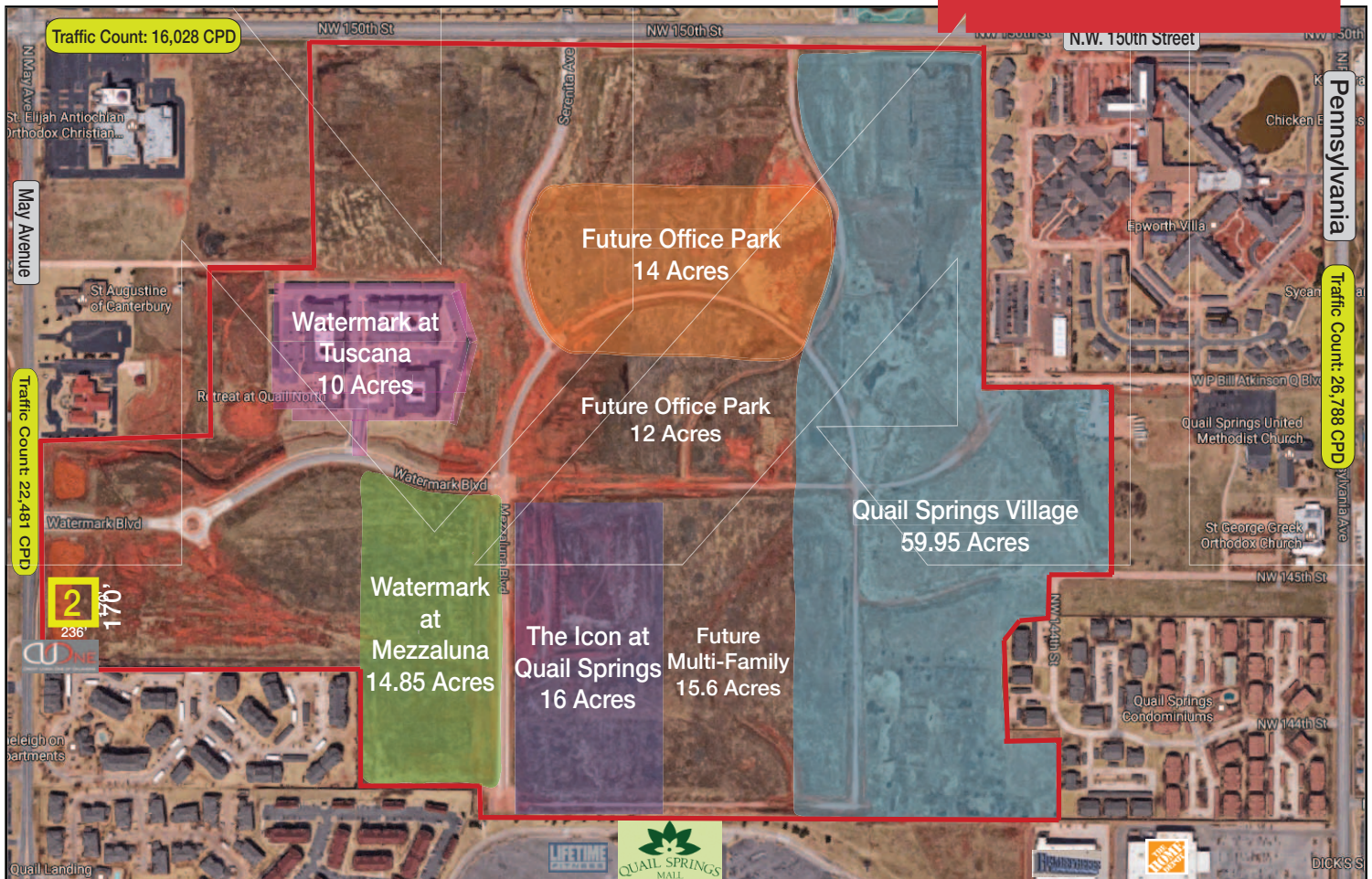


Retail Pad Sites For Sale

0.92 Acres MOL

Sales Price: \$22.00/SF



Quail Springs North (Tract 2)

14314 N. May Avenue

Oklahoma City, Oklahoma 73134

PROPERTY HIGHLIGHTS

- Build to Suit Opportunity
- Good Visibility on May Avenue
- Lots Can Be Extended



CLICK HERE TO VIEW DRONE PREVIEW
https://youtu.be/mOE_Radvz10

LAND IN SF	40,184 SF MOL
LAND IN ACRES	0.92 ACRES MOL
DIMENSIONS	236' x 170'
ZONING	C-3
GENERAL USE	Retail

www.naisullivangroup.com

David Hartnack / Sam Swanson / Nathan Wilson

David's Cell: 1 405 761 8955
 Sam's Cell: 1 405 208 2046
 Nathan's Cell: 1 405 760 5327
davidh@naisullivangroup.com
sam@naisullivangroup.com
nathan@naisullivangroup.com

4045 N.W. 64th Street, Suite 340
 Oklahoma City, Oklahoma 73116
 Office: 1 405 840 0600
 Fax: 1 405 840 0610

NO WARRANTY OR REPRESENTATION, EXPRESS OR IMPLIED, IS MADE AS TO THE ACCURACY OF THE INFORMATION CONTAINED HEREIN, AND THE SAME IS SUBMITTED SUBJECT TO ERRORS, OMISSIONS, CHANGE OF PRICE, RENTAL OR OTHER CONDITIONS, PRIOR SALE, LEASE OR FINANCING, OR WITHDRAWAL WITHOUT NOTICE, AND OF ANY SPECIAL LISTING CONDITIONS IMPOSED BY OUR PRINCIPALS NO WARRANTIES OR REPRESENTATIONS ARE MADE AS TO THE CONDITION OF THE PROPERTY OR ANY HAZARDS CONTAINED THEREIN ARE ANY TO BE IMPLIED.



DEMOGRAPHICS

Population		
1 Mile: 6,856	3 Mile: 47,261	5 Mile: 127,086
Average Household Income		
1 Mile: \$40,177	3 Mile: \$46,622	5 Mile: \$44,498
Total Households		
1 Mile: 3,718	3 Mile: 21,971	5 Mile: 54,397

LOCATION HIGHLIGHTS

- Access to Kilpatrick Turnpike & Highway 74
- 3,702,952 SF of Retail Space within 2 Miles
- Adjacent to Largest Regional Anchored Mall in Oklahoma

David Hartnack / Sam Swanson / Nathan Wilson

David's Cell: 1 405 761 8955
 Sam's Cell: 1 405 208 2046
 Nathan's Cell: 1 405 760 5327
 davidh@naisullivangroup.com
 sam@naisullivangroup.com
 nathan@naisullivangroup.com

4045 N.W. 64th Street, Suite 340
 Oklahoma City, Oklahoma 73116
 Office: 1 405 840 0600
 Fax: 1 405 840 0610

www.naisullivangroup.com

4045 N.W. 64th Street, Suite 340
 Oklahoma City, Oklahoma 73116
 Office: 1 405 840 0600
 Fax: 1 405 840 0610