



**CUSHMAN &
WAKEFIELD**

LAND FOR SALE

2662 Morton Street

Franklin, IN



Property Highlights

- +/- 9 acres
- Zoned MXC- Mixed Use
- Part of Gateway Overlay District
- +/- 750' of frontage on US 31 (Morton Street)
- Great visibility from US 31
- Utilities to the property
- Asking \$225,000/Acre



Bo Leffel

Director

Direct +1 317 639 0441

bo.leffel@cushwake.com

One American Square, Suite 1800

Indianapolis, IN 46282 | USA

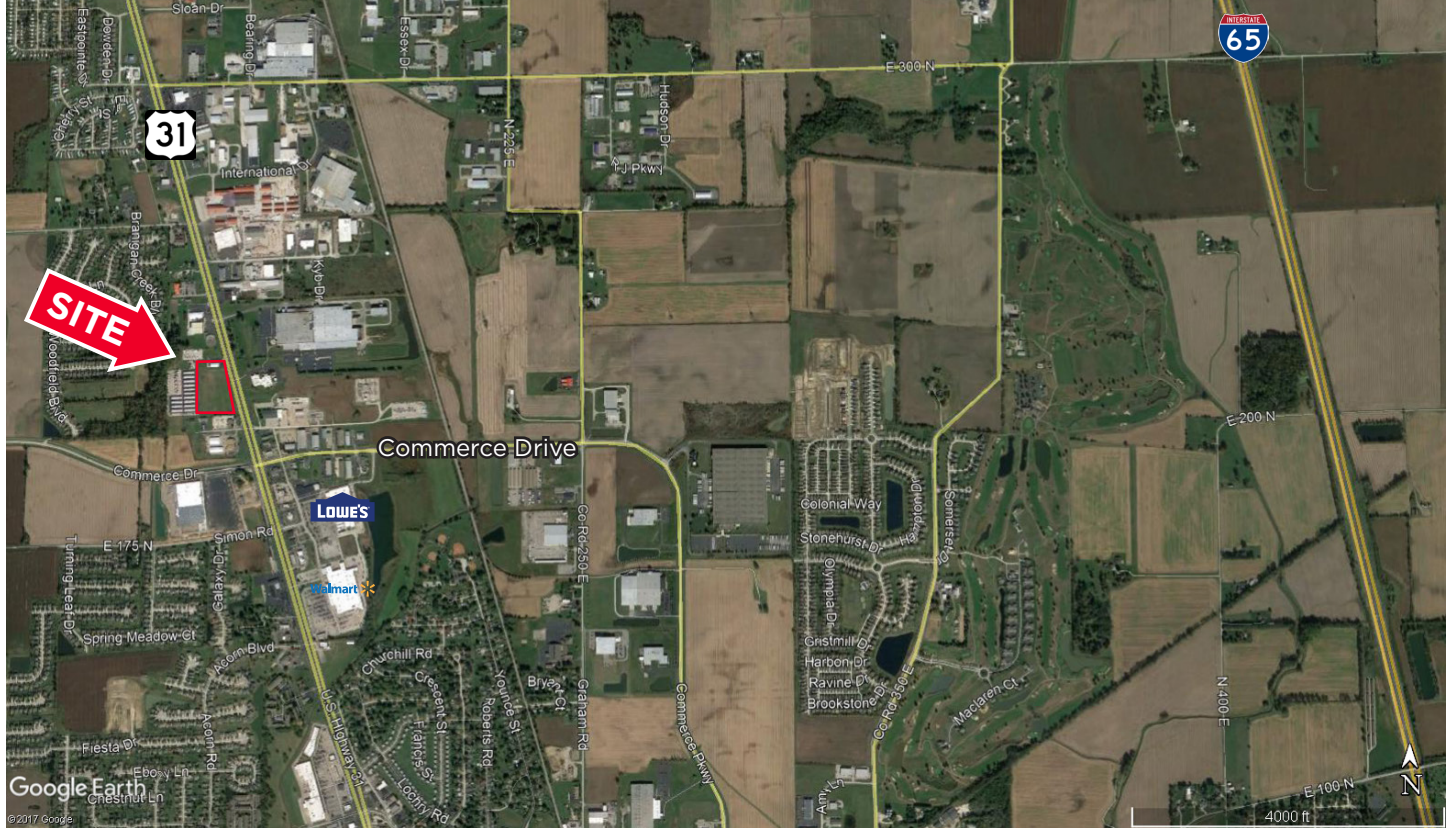
Main +1 317 634 6363

Fax +1 317 639 0504

cushmanwakefield.com



Aerial



Demographics

	1 Mile	3 Miles	5 Miles
Population	4,819	27,689	42,715
Average Household Income	\$57,842	\$69,369	\$71,333
Daytime Population (Age 16+)	5,189	21,862	29,109

2017 estimates. Source: Applied Geographic Solutions 04/2017, TIGER Geography

Traffic Counts

US 31	28,097 AADT
-------	-------------

2016 AADT. Source: Indiana Department of Transportation

Bo Leffel
Director
Direct +1 317 639 0441
bo.leffel@cushwake.com

One American Square, Suite 1800
Indianapolis, IN 46282 | USA
Main +1 317 634 6363
cushmanwakefield.com