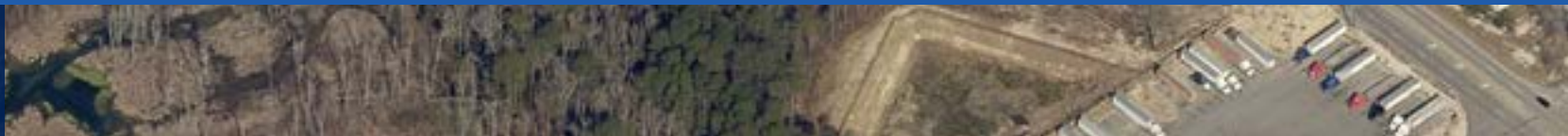




BLUFF ROAD

±13.94 ACRE DEVELOPMENT SITE

NORTH SIDE OF BLUFF ROAD, COLUMBIA, SC 29201



BLUFF ROAD

±13.94 ACRE DEVELOPMENT SITE

PROPERTY SUMMARY
AND SITE SURVEY

±13.94 AC site located in Columbia's
largest industrial corridor

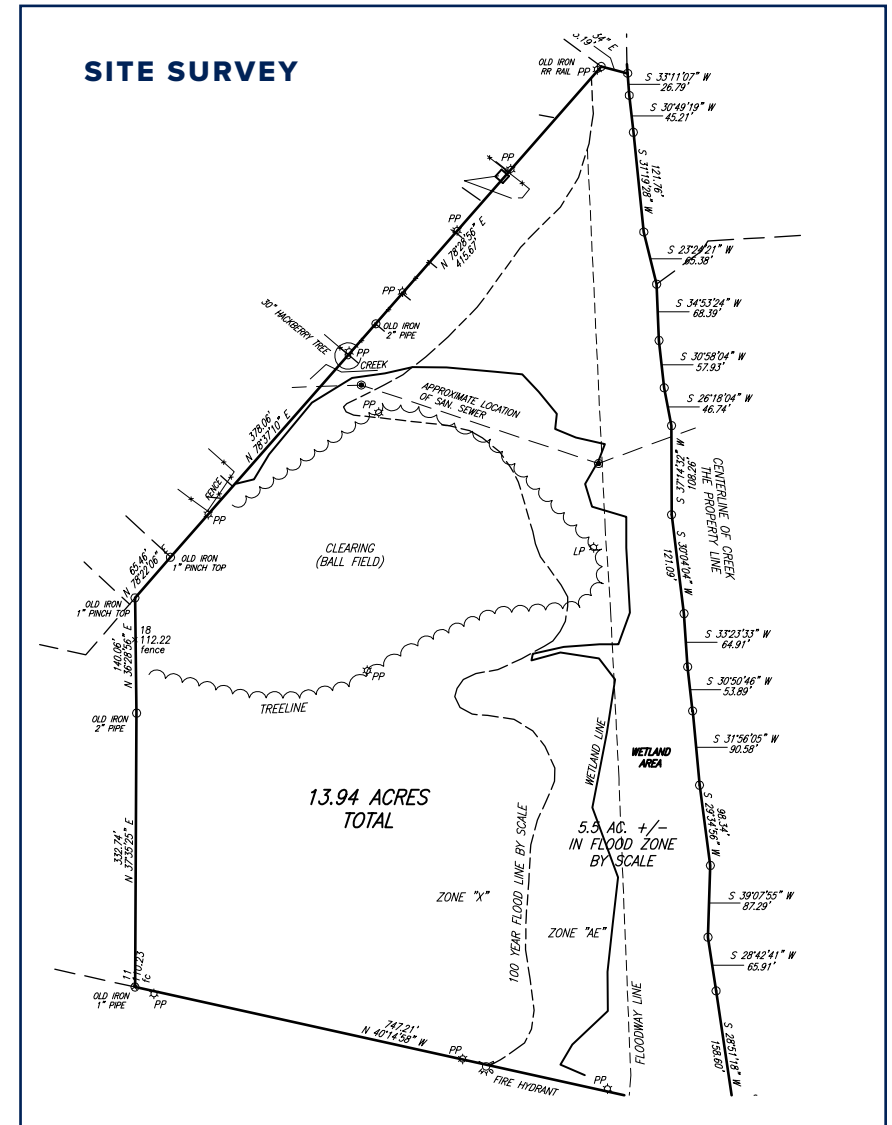
Roughly ±0.75 Miles from I-77

747 Feet of road frontage on Bluff Rd

2018 VPD on Bluff Road : 23,000

Zoned RM-HD

Sales price: \$775,000



CONTACT

NICK STOMSKI, SIOR | Partner
nstomski@trinity-partners.com | 803-567-1447

JAKE NIDIFFER | Brokerage Associate
jnidiffer@trinity-partners.com | 803-567-1324



BLUFF ROAD

±13.94 ACRE DEVELOPMENT SITE

POINTS OF INTEREST
BLUFF ROAD



DRIVING DISTANCES

10 MILES TO COLUMBIA METROPOLITAN AIRPORT

6 MILES TO I-26

0.75 MILES TO I-77

11.5 MILES TO I-20

5 MILES TO HWY 378

VULCAN MATERIALS COMPANY

STATE FAIR GROUNDS

KW BEVERAGE

UNITED RENTALS

PRECOAT METALS

SERVICE PRINTING

LANSING BUILDING PRODUCTS

SLOAN CONSTRUCTION

SHEALY TRUCK

ADVANCED DOOR SYSTEMS

NAPA AUTO PARTS

RYDER TRUCK RENTAL

CAROLINA INTERNATIONAL TRUCKS

SITE

AMERI COLD LOGISTICS

TYSON FOODS

CONTACT

NICK STOMSKI, SIOR | Partner
nstomski@trinity-partners.com | 803-567-1447

JAKE NIDIFFER | Brokerage Associate
jnidiffer@trinity-partners.com | 803-567-1324

TRINITY
PARTNERS

BLUFF ROAD

±13.94 ACRE DEVELOPMENT SITE

POINTS OF INTEREST
INDUSTRIAL PARK



The information contained herein was obtained from sources believed reliable; however, Trinity Partners makes no guarantees, warranties, or representations as to the completeness or accuracy thereof. The presentation of this property is submitted subject to errors, omissions, changes of price or conditions prior to sale or lease, or withdrawal without notice.

CONTACT

NICK STOMSKI, SIOR | Partner
nstomski@trinity-partners.com | 803-567-1447

JAKE NIDIFFER | Brokerage Associate
jnidiffer@trinity-partners.com | 803-567-1324

