

## Pacific Industrial Park

14800-15100 40th Ave NE  
Marysville, WA

### Class A Industrial Park Just Off I-5 in Marysville

Up to 18,000 SF available,  
divisible to 3,600 SF

Build to suit office

16' wide grade level doors

Shared loading dock

24' clear height

Natural gas heating - insulated

Heavy power/sprinklered

Fiber optic available

Aggressively priced

Site plan/availabilities on reverse



### Location



### Contact

**Matthew P. Henn**

Senior Vice President

425.450.1108

[mhenn@kiddermathews.com](mailto:mhenn@kiddermathews.com)

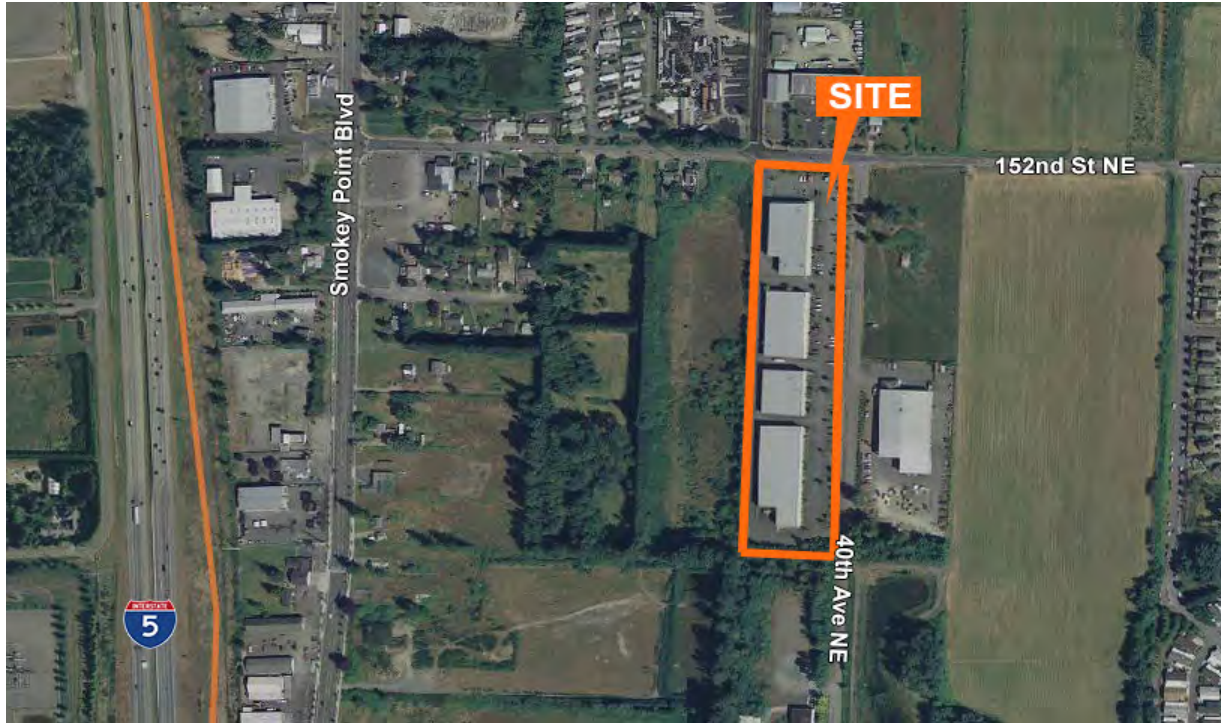
**Matthew Hagen, SIOR**

Senior Vice President

425.283.5782

[mhagen@kiddermathews.com](mailto:mhagen@kiddermathews.com)

## Pacific Industrial Park



### AVAILABLE SPACE

#### Building B - 15000 40th Avenue NE

Suite	Available SF	Office SF	Rate
101	18,000 SF	1,785 SF	\$0.53 SF Whse/\$1.10 SF Office

#### Building C - 14900 40th Avenue NE

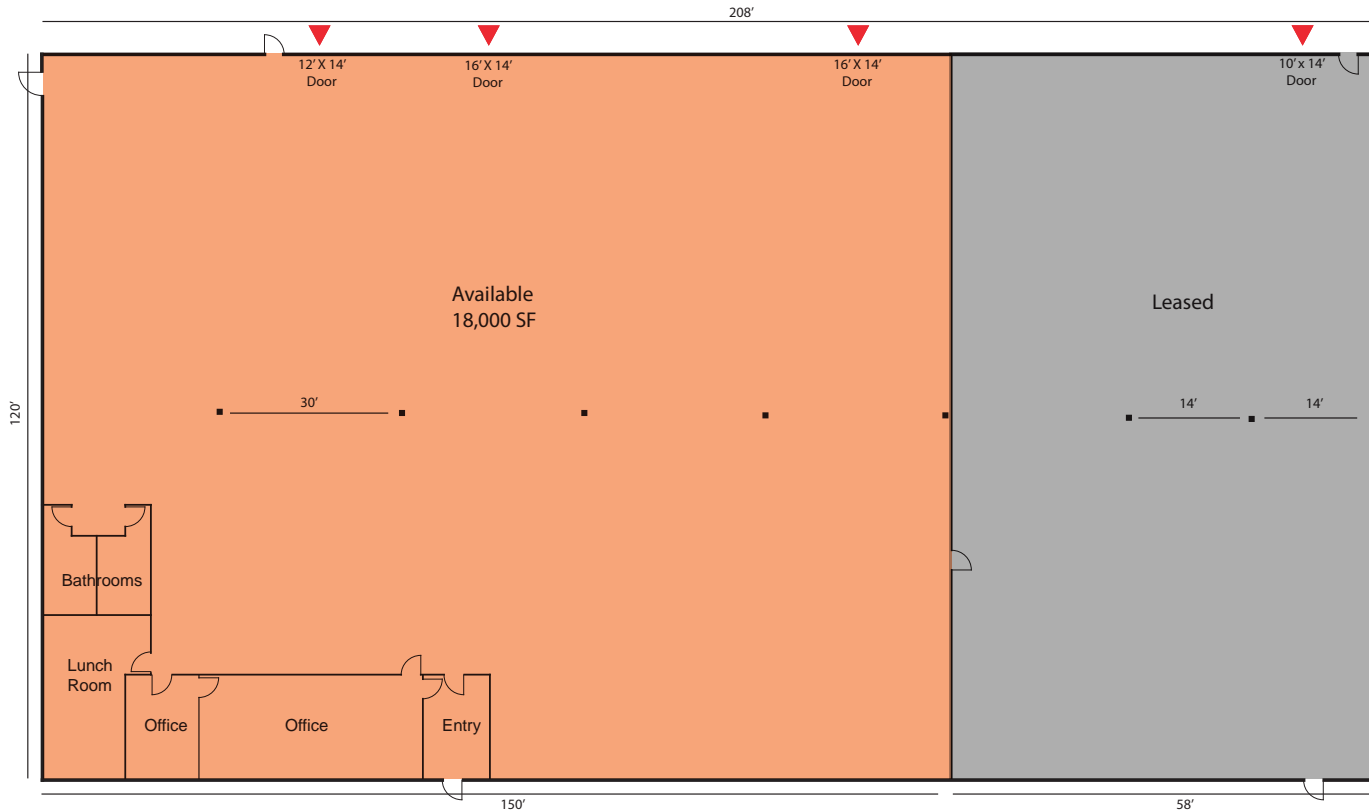
Suite	Available SF	Office SF	Rate
101	11,700 SF	2,124 SF	\$0.53 SF Whse/\$1.10 SF Office
202	3,396 SF	1,350 SF finished	\$0.53 SF Whse/\$1.10 SF Office
		2,700 SF Available	

#### Building D - 14800 40th Avenue NE

Suite	Available SF	Office SF	Rate
102	10,800 SF	BTS	\$0.53 SF Whse/\$1.10 SF Office

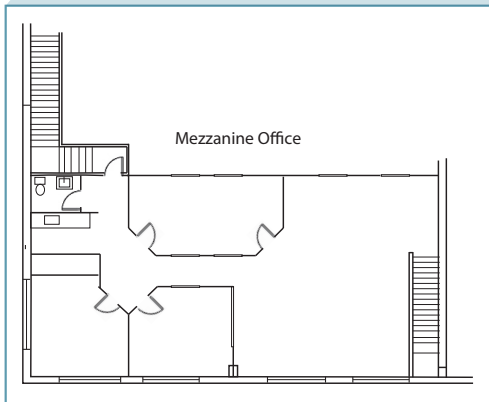
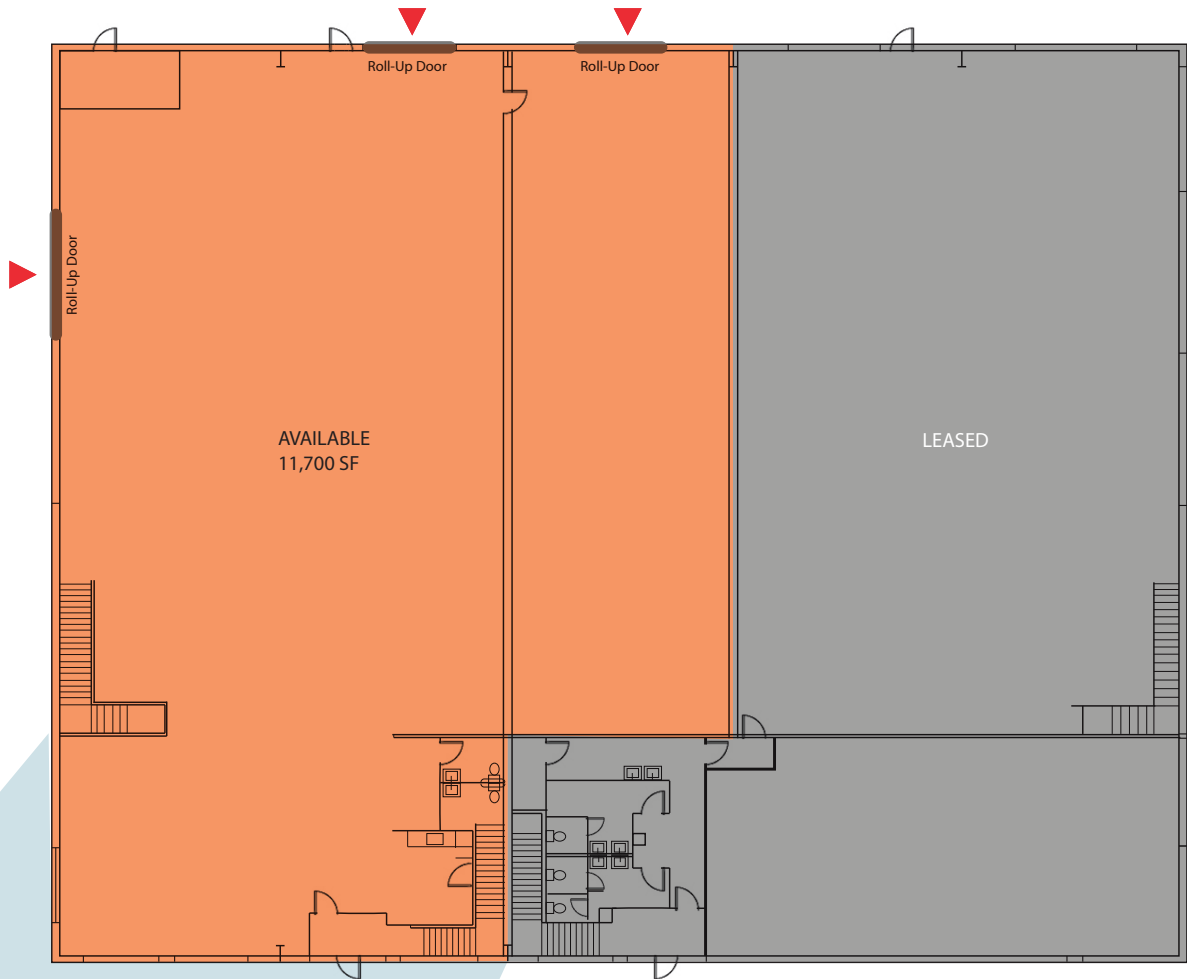
## Pacific Industrial Park

### Building B: Suite 101



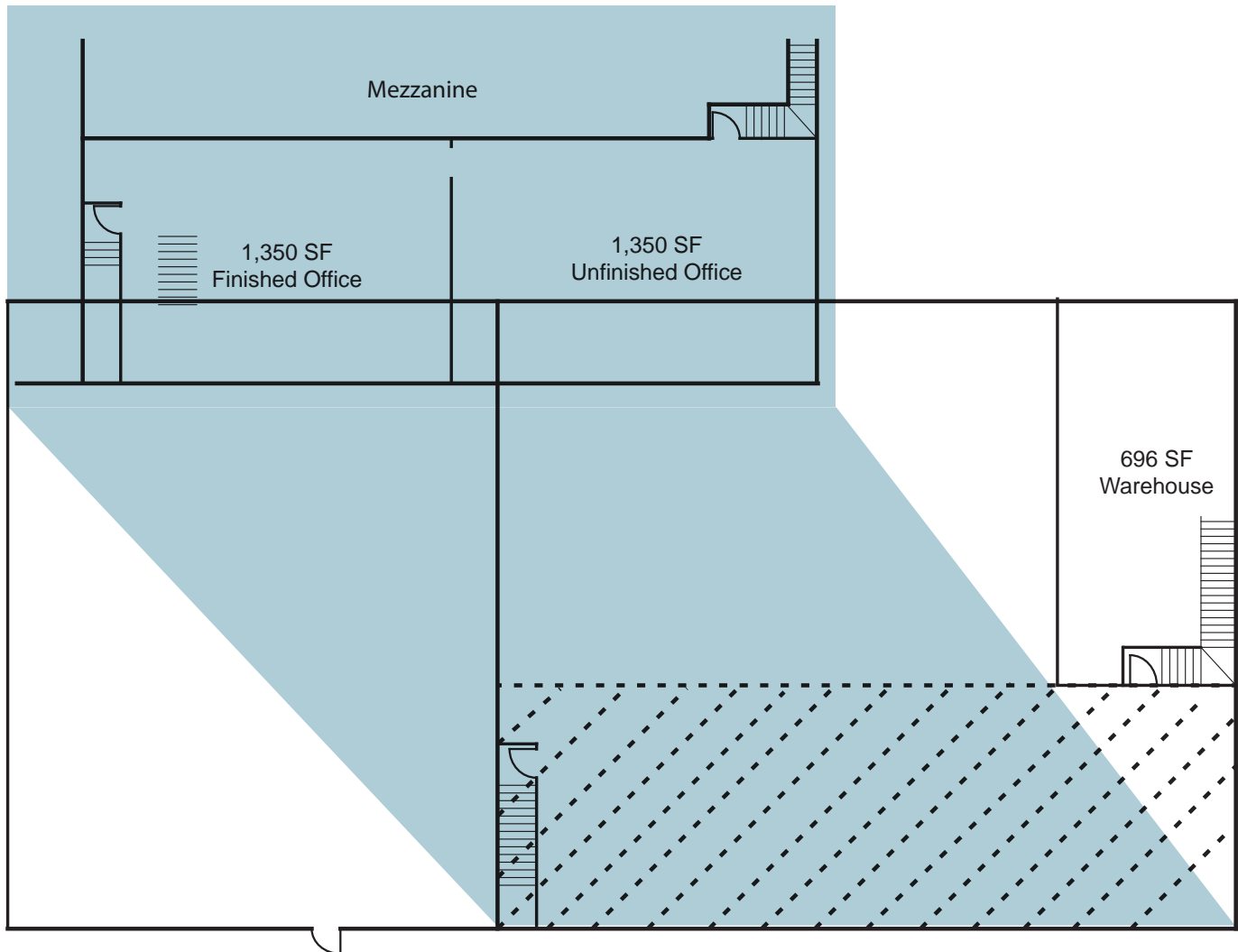
## Pacific Industrial Park

**Building C: Suite 101**



## Pacific Industrial Park

**Building C: Suite 202**



## Pacific Industrial Park

**Building D: 102**

