



## Commencement Bay Medical Building

3716 Pacific Avenue South, Tacoma, WA 98418

Commencement Bay Medical Building is centrally located just off 38th Street in Tacoma, with easy access to both State Route 7 and Interstate 5. The building offers lighted parking in the lot fronting Pacific Ave, as well as in the lot behind the building.

### Property Overview

- Excellent, Central Location
- Pierce County Health Dept. across the street
- Just off 38th Street
- Professional Building
- Ample, Lighted Parking
- Suite G: 1,200sf
- Nice, open space plan
- \$18.00/sf/yr MG
- \$1,800 per month + power

DISCLAIMER: The above information has been secured from sources believed to be reliable, however, no representations are made to its accuracy. Prospective tenants or buyers should consult their professional advisors and conduct their own independent investigation. Properties are subject to change in price and/or availability without notice.



11120 Gravelly Lake Dr SW Ste 2  
Lakewood, Washington 98499  
johnson-commercial.com

**Tim Johnson**  
timothy@johnson-commercial.com  
(253) 209-9999

**Margot Johnson**  
margot@johnson-commercial.com  
(253) 209-9998



# Office Space for Lease

## EXTERIOR PHOTOS



## INTERIOR PHOTOS



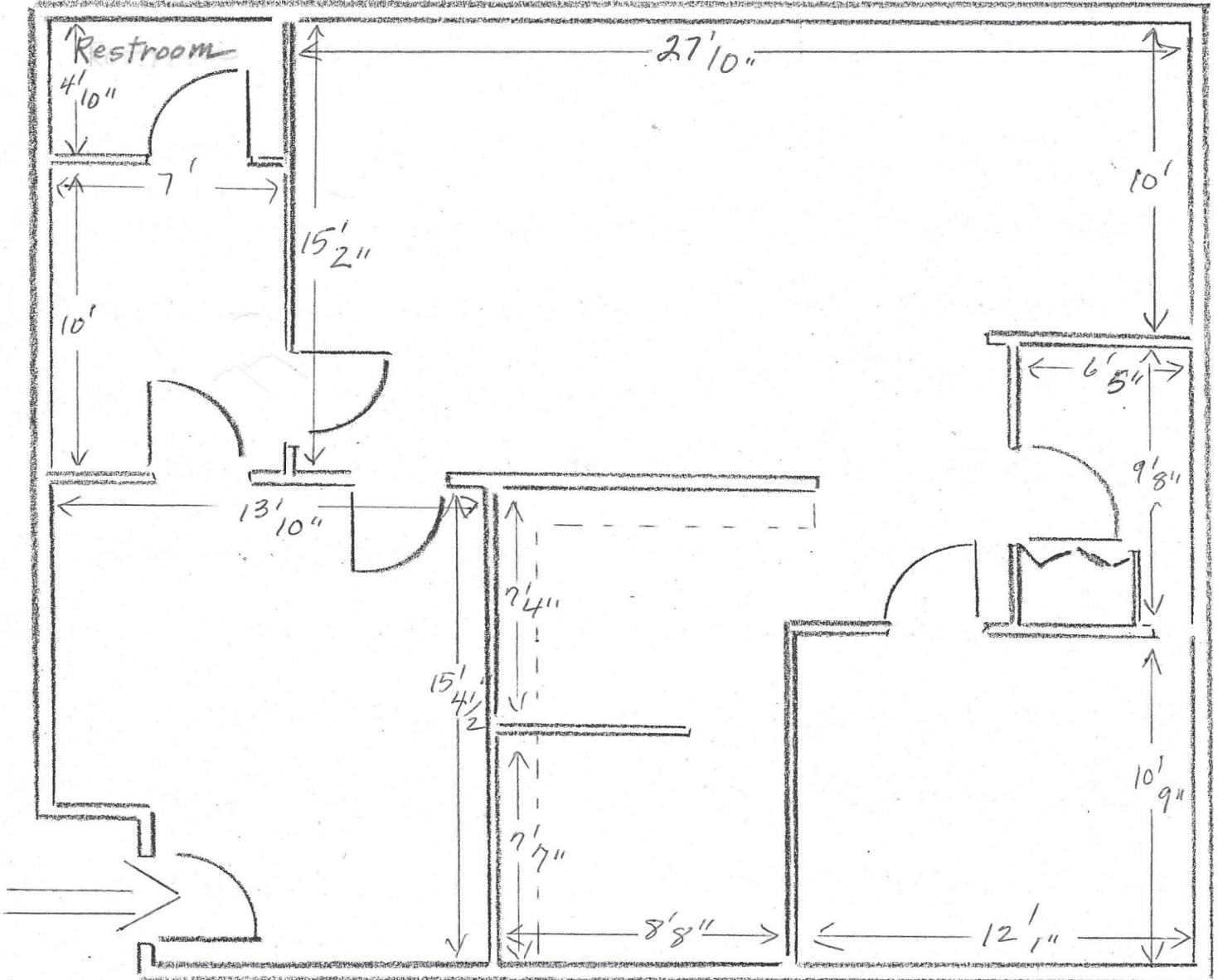
11120 Gravelly Lake Dr SW Ste 2  
Lakewood, Washington 98499  
johnson-commercial.com

**Tim Johnson**  
timothy@johnson-commercial.com  
(253) 209-9999

**Margot Johnson**  
margot@johnson-commercial.com  
(253) 209-9998



## FLOOR PLAN Suite G



11120 Gravelly Lake Dr SW Ste 2  
Lakewood, Washington 98499  
johnson-commercial.com

**Tim Johnson**

timothy@johnson-commercial.com  
(253) 209-9999

**Margot Johnson**

margot@johnson-commercial.com  
(253) 209-9998



## AREA MAP



11120 Gravelly Lake Dr SW Ste 2  
Lakewood, Washington 98499  
johnson-commercial.com

**Tim Johnson**  
timothy@johnson-commercial.com  
(253) 209-9999

**Margot Johnson**  
margot@johnson-commercial.com  
(253) 209-9998