

**FOR  
LEASE**

# FREE-SPAN WAREHOUSE SANFORD, FL

**501 PERSIMMON AVE SANFORD, FL 32771**



## **CONTACT**

**Vincent F. Wille, CCIM, SIOR**  
407.448.1823 *mobile*  
CREManager@Gmail.com

**Results Real Estate Partners, LLC**  
*Licensed Commercial Real Estate Brokers*  
108 Commerce Street, Suite 200  
Lake Mary, Florida 32746

407.647.0200 *main*  
407.647.0205 *fax*

[www.ResultsREPartners.com](http://www.ResultsREPartners.com)

## **PROPERTY HIGHLIGHTS**

- 20,000 SF Warehouse 100'x 200' Free-Span Warehouse with 18' Clear Height that was just Renovated
- Covered Rear Awning for Outside Loading
- (2) Docks (truck well) and (2) Grade Level Loading
- New Office and HVAC system in 2017, New LED Lighting
- Fenced in Outside Storage (1.28 Acre Industrial Site)
- Easy Access to I-4, 417, and just off SR 46
- Additional 2.5 Acres of Contiguous Land is also Available for Lease beside the site (see broker for details)

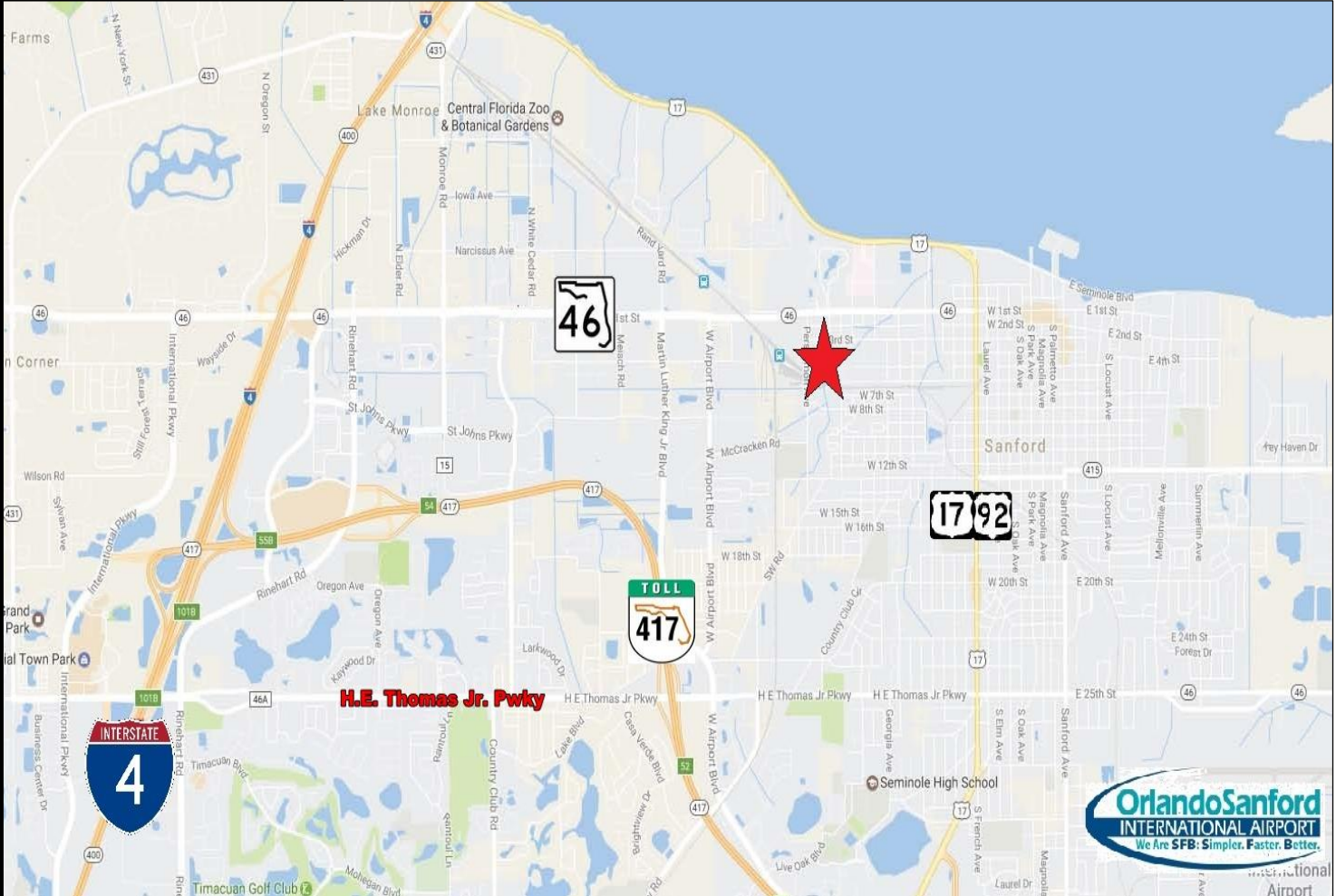
**Lease Rate:           \$5.50 Modified Gross**

This information is from sources we deem reliable and is subject to prior sale, lease, withdrawal without notice, or change in prices, rates, or conditions. No representation is made as to the accuracy of any information furnished.

**FOR  
LEASE**

# FREE-SPAN WAREHOUSE SANFORD, FL

**501 PERSIMMON AVE SANFORD, FL 32771**



## CONTACT

Vincent F. Wolle, CCIM, SIOR  
407.448.1823 *mobile*  
CREManager@Gmail.com

**Results Real Estate Partners, LLC**  
*Licensed Commercial Real Estate Brokers*  
108 Commerce Street, Suite 200  
Lake Mary, Florida 32746

407.647.0200 *main*  
407.647.0205 *fax*

www.ResultsREPartners.com

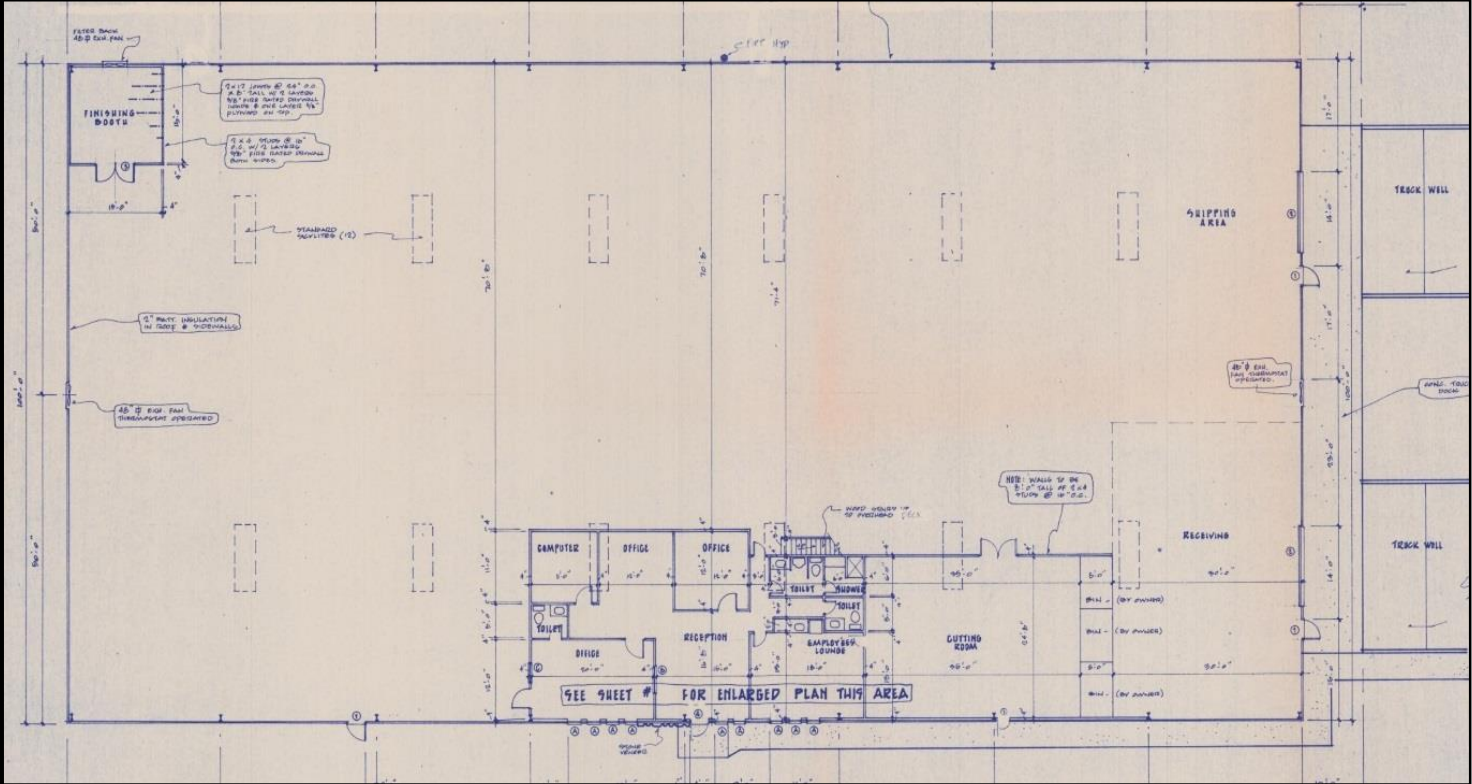


This information is from sources we deem reliable and is subject to prior sale, lease, withdrawal without notice, or change in prices, rates, or conditions. No representation is made as to the accuracy of any information furnished.

**FOR  
LEASE**

# FREE-SPAN WAREHOUSE SANFORD, FL

**501 PERSIMMON AVE SANFORD, FL 32771**



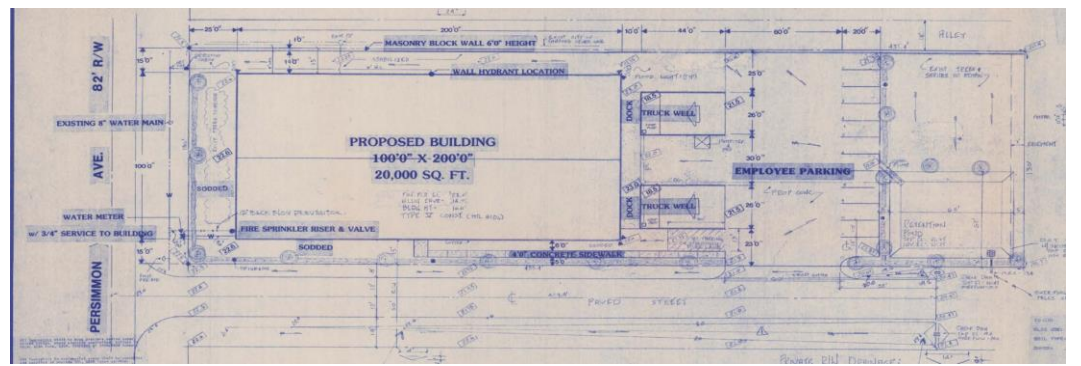
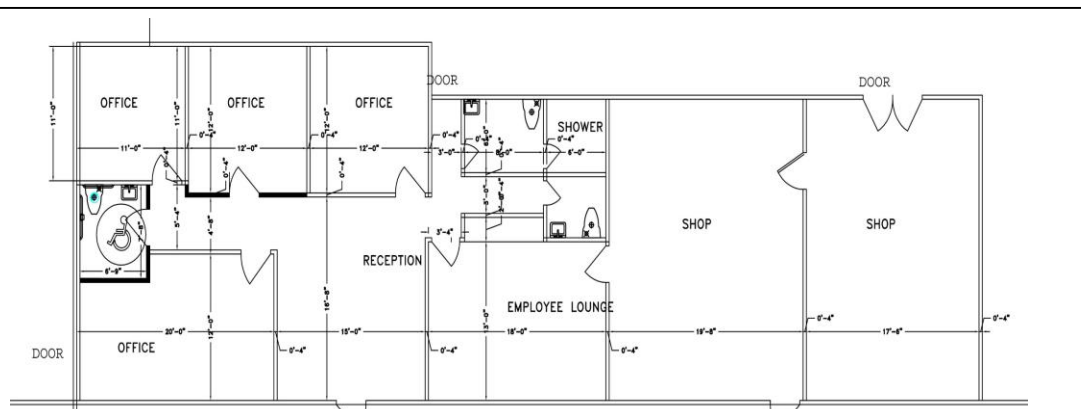
## CONTACT

Vincent F. Wolle, CCIM, SIOR  
407.448.1823 *mobile*  
CREManager@Gmail.com

**Results Real Estate Partners, LLC**  
*Licensed Commercial Real Estate Brokers*  
108 Commerce Street, Suite 200  
Lake Mary, Florida 32746

407.647.0200 *main*  
407.647.0205 *fax*

www.ResultsREPartners.com



This information is from sources we deem reliable and is subject to prior sale, lease, withdrawal without notice, or change in prices, rates, or conditions. No representation is made as to the accuracy of any information furnished.