

# 400 LAUREL OAK ROAD

VOORHEES, NJ

---

## FOR LEASE

SUITE 101: 18,870 SF  
SUITE 102: 3,041 SF  
SUITE 103: 3,076 SF



CONTIGUOUS AVAILABLE  
**24,987 SF**

**RENTAL RATE \$9.75/SF + NNN**

---

## PROPERTY HIGHLIGHTS

- Class B office
- Ample parking
- Excellent window-line
- Potential tenant signage
- Several eating and shopping establishments in surrounding areas
- Minutes from I-295 and PATCO High Speed Line

### FOR INFORMATION, PLEASE CONTACT:

Anne Klein  
Executive Managing Director  
856.334.2110  
aklein@ngkf.com

40 Lake Center Executive Park  
401 Route 73 North, Suite 120  
Marlton, NJ 08053  
T 856.334.2100



Newmark  
Knight Frank

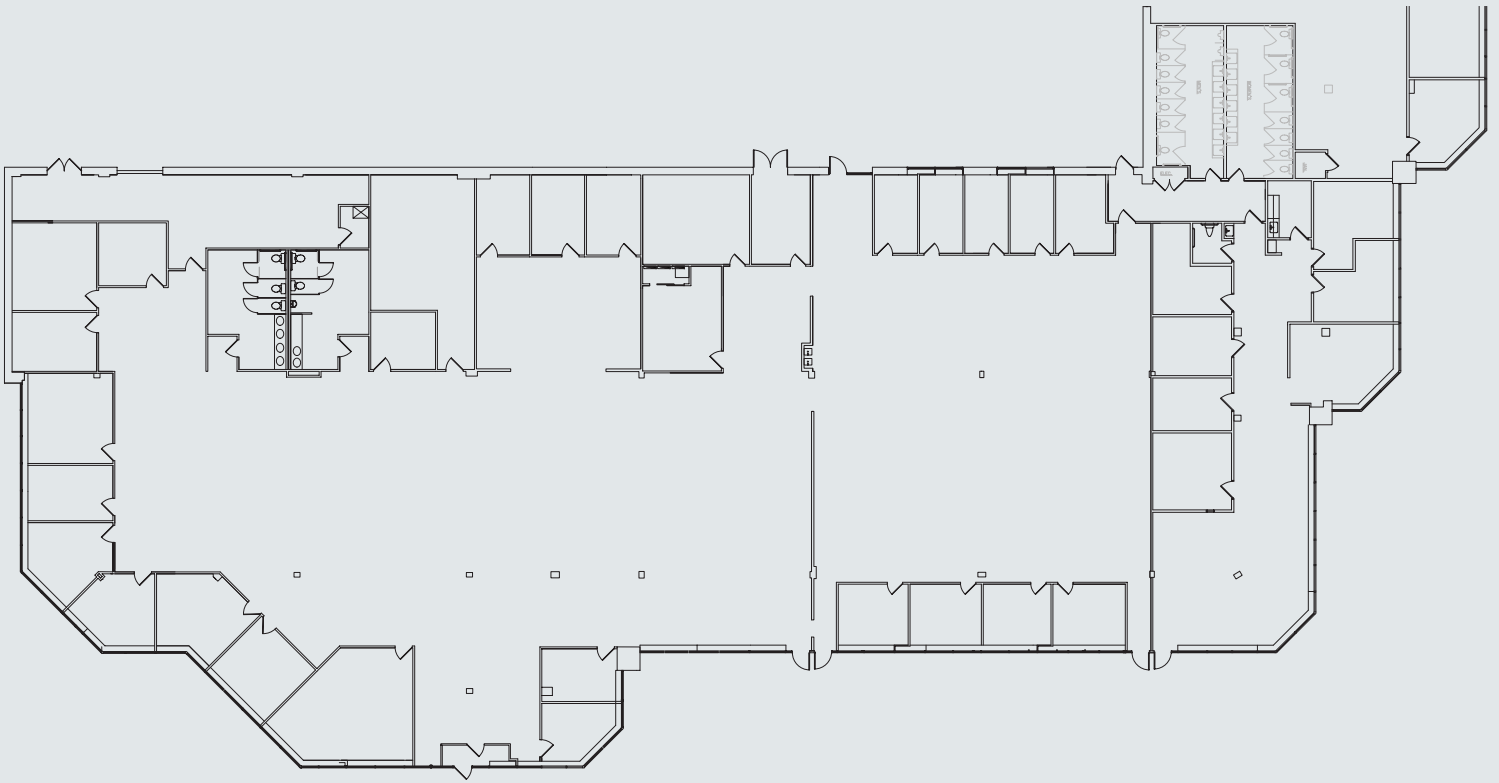
ngkf.com

# AMENITIES



# 400 LAUREL OAK ROAD

VOORHEES, NJ



## FOR INFORMATION, PLEASE CONTACT:

Anne Klein  
Executive Managing Director  
856.334.2110  
aklein@ngkf.com

40 Lake Center Executive Park  
401 Route 73 North, Suite 120  
Marlton, NJ 08053  
T 856.334.2100



The information contained herein has been obtained from sources deemed reliable but has not been verified and no guarantee, warranty or representation, either express or implied, is made with respect to such information. Terms of sale or lease and availability are subject to change or withdrawal without notice.