

## Corner Suite Available Near Meadowbrook



### Just South of New Meadowbrook Development

- Corner office suite on 2nd floor with private entrance and reception area
- Overlooking 95th Street
- Furniture included (desks and partitions)
- Located between Roe Avenue and Nall Avenue
- Abundant parking
- Lots of natural light

### For more information:

Connor Knabe  
816.412.5883  
cknabe@blockllc.com

The information contained in this marketing flyer is presented as general information only. Block Real Estate Services, LLC makes no representation as to its accuracy. This information is not intended as legal, financial or real estate advice and must not be relied upon as such. You should make your own inquiries, obtain independent inspections, and seek professional advice tailored to your specific circumstances before making any legal, financial or real estate decisions.

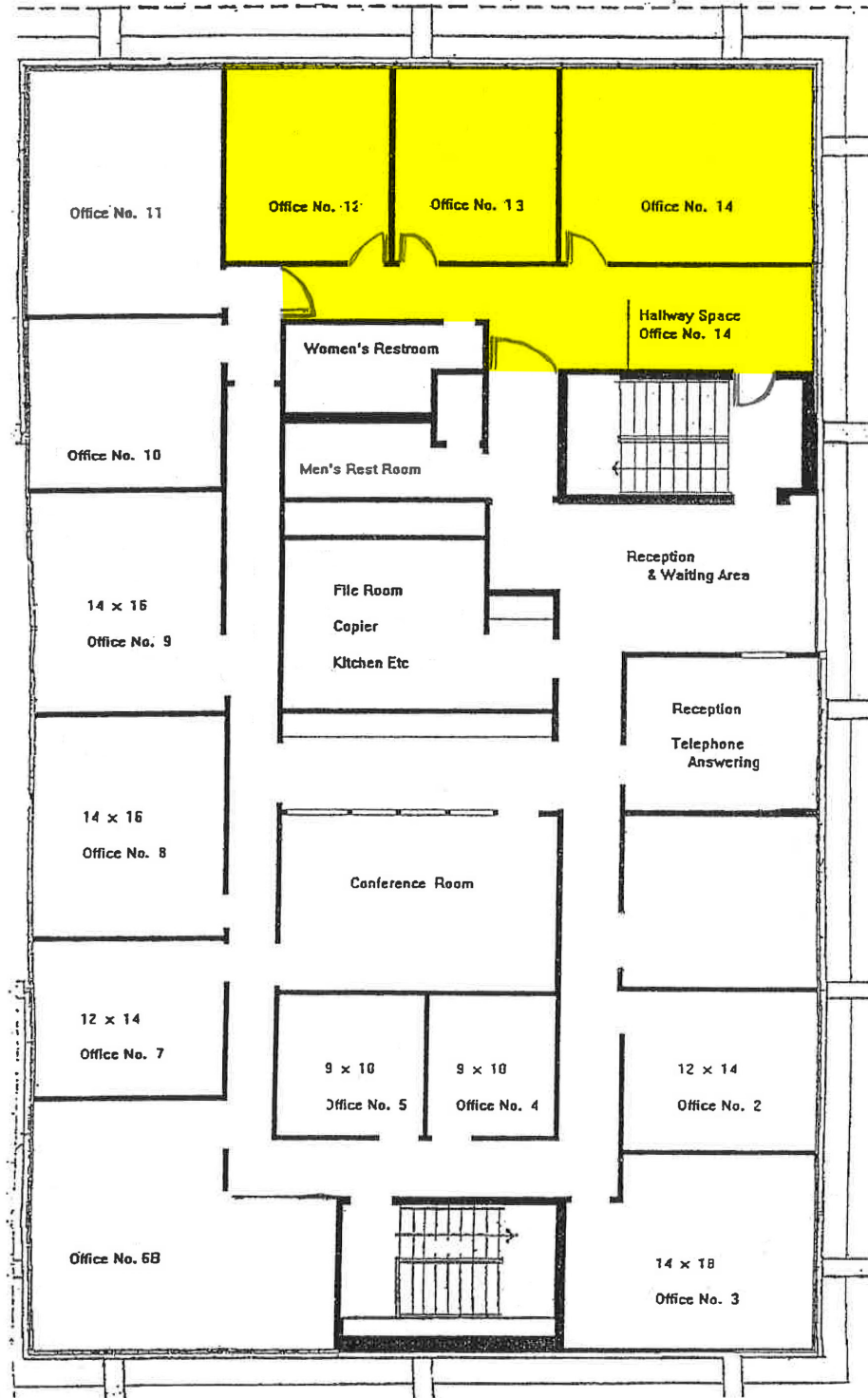


## Building Specifications

Office Style:	3 private offices with reception area
Parking:	5.5/1,000
Year Built:	1974
Design Features:	This multi-tenant office building is designed to accommodate a single user seeking a corner office suite with a private entrance and reception area
Base Rent:	\$1,900 per month (Internet/Wi-Fi included in rent)
Lease Type:	Full service
Term:	Short term lease available
Accessibility:	24 hour access



## Floor Plan

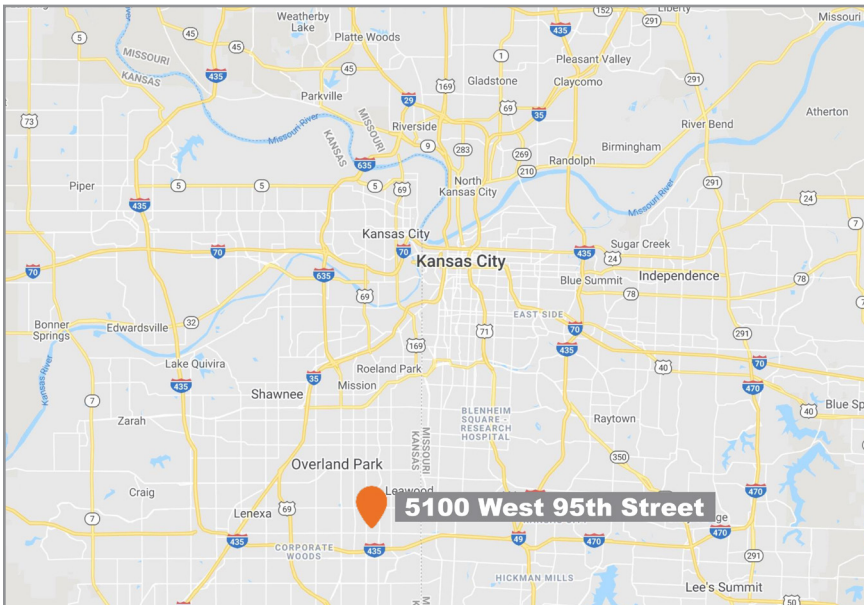




# 5100 West 95th Street

Prairie Village, Kansas 66207

# For Lease



For more information:

Connor Knabe  
816.412.5883  
cknabe@blockllc.com

700 W. 47th Street, Suite 200  
Kansas City, MO 64112  
816.756.1400 | [www.BLOCKLLC.com](http://www.BLOCKLLC.com)

**BLOCK**  
REAL ESTATE SERVICES, LLC