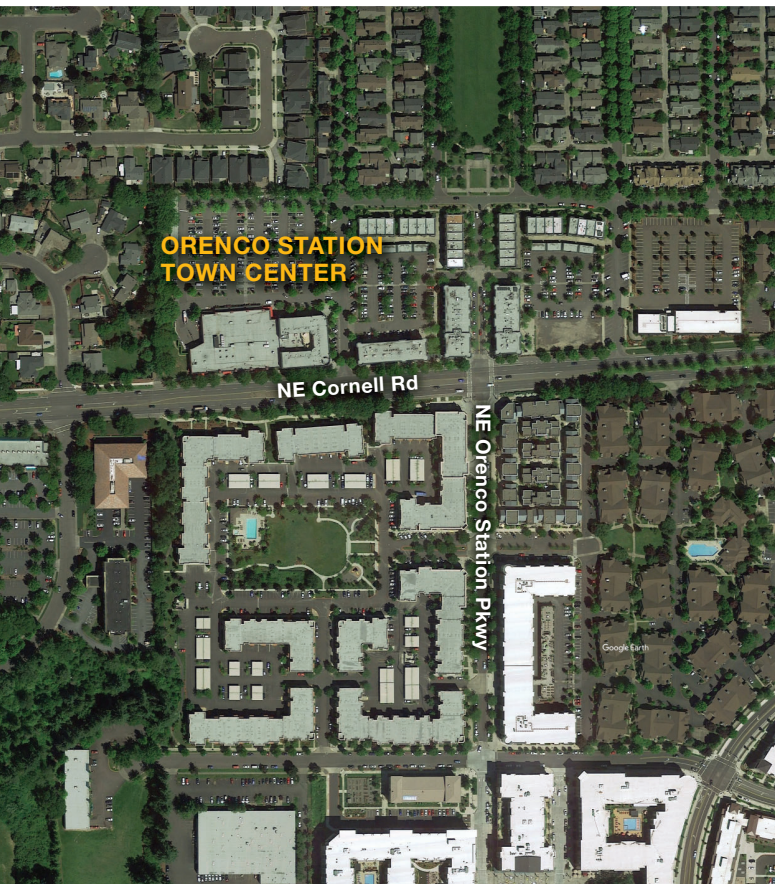


Orenco Station Town Center

1323 Orenco Station Parkway Hillsboro • 1,384 sq.ft. Office



LOCATION

Building 1
1323 Orenco Station Parkway
Suite 200
Hillsboro OR 97124

TOTAL SQ.FT.

1,384 sq.ft.

FEATURES

Award-winning community
On TriMet's MAX Light Rail system
Owner managed

RATE

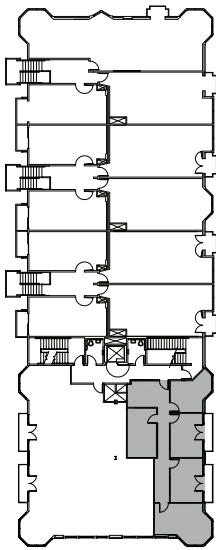
\$28.00/sq.ft.
Full service

LEASING CONTACT

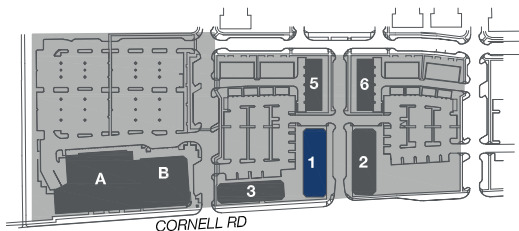
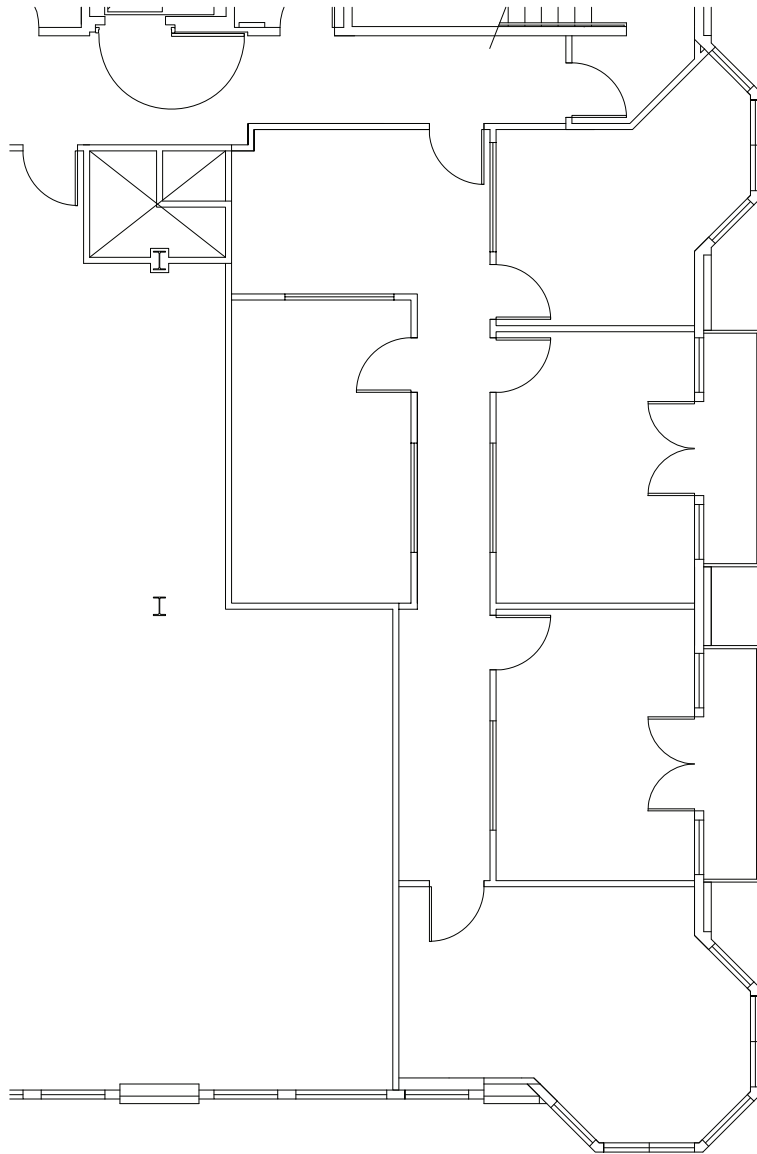
Sam Briggs
samb@pactrust.com
503-624-6300

Dave Hicks
daveh@pactrust.com
503-624-6300





BUILDING PLAN



ORENCO STATION TOWN CENTER
Hillsboro, OR 97124



15350 SW Sequoia Pkwy Suite 300 Portland OR 97224 • 503.624.6300 • pactrust.com

The square footage and rates quoted herein are subject to change. Square footage and rates are finalized with a signed lease agreement.

