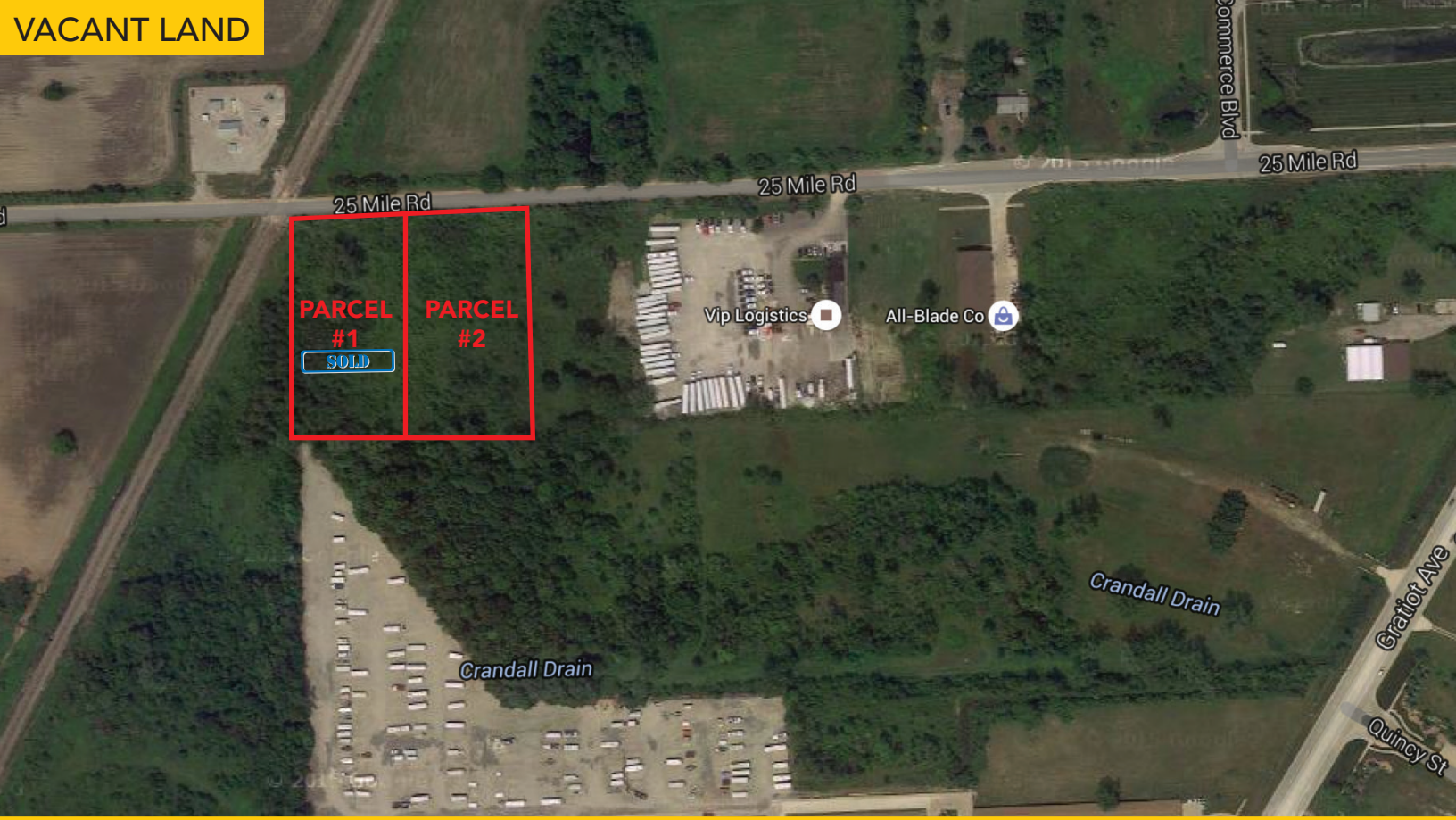


VACANT LAND



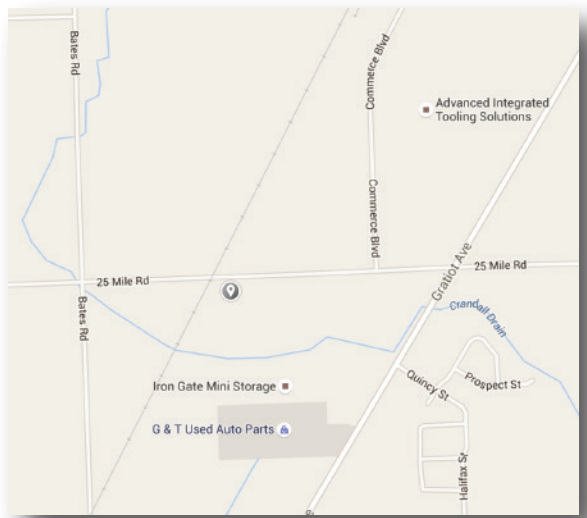
HEAVY INDUSTRIAL: 25 MILE ROAD, CHESTERFIELD TWP., MI 48051



Property Type: Industrial
 Sale Price: \$195,000
 Zoning: M-2
 Possible Use: Heavy manufacturing with outside storage
 Utilities: Septic, City Water & Engineered Storm
 Cross Streets: South of 25 Mile Road, West side Gratiot

PARCEL #2:

Acres: 2.317
 Lot Size: 208 Frontage x 418 Depth



PROPERTY CONTACT:

TONY CAVATAIO | O: 586.254.0900 x107 | C: 586.291.6968 | tcavataio@pilotpg.com

44400 VAN DYKE, SUITE 101, STERLING HEIGHTS, MI 48314