

DANA MARINA PLAZA

24901 - 25001 DANA POINT HARBOR DRIVE
DANA POINT, CA 92629



55,457 SF RETAIL / OFFICE PROJECT

- Iconic 5-building project located in the heart of Dana Point Harbor
- Flexibility within potential uses
- Beautiful outdoor common areas
- Excellent signage opportunities with unparalleled visibility
- Proximity to amenities & food services including walking distance to marina
- On-site ATM
- Ocean views

Offered exclusively by:

RETAIL

CHAD R. IAFRATE, CCIM
+1 760 431 4234
chad.iafrate@cushwake.com
LIC #01484290

OFFICE

BROOKS CAMPBELL
+1 760 431 4215
brooks.campbell@cushwake.com
LIC #01380901

PETER CURRY
+1 760 431 4238
peter.curry@cushwake.com
LIC #01241186

Owned by:



DANA MARINA PLAZA

24901 - 25001 DANA POINT HARBOR DRIVE, DANA POINT, CA 92629

AVAILABILITIES

LEASE RATE: RETAIL: \$2.50/RSF NNN (NNN = APPROX. \$0.72/SF) | OFFICE \$3.00/RSF + ELECTRIC & JANITORIAL

Suite #	RSF	Available	Comments
24921 - Suite B130	1,995	Immediately	Retail
24941 - Suite C100	2,116	Immediately	Retail
24941 - Suite C210	1,160	Immediately	Retail



Offered exclusively by:

RETAIL

CHAD R. IAFRATE, CCIM
+1 760 431 4234
chad.iafrate@cushwake.com
LIC #01484290

OFFICE

BROOKS CAMPBELL
+1 760 431 4215
brooks.campbell@cushwake.com
LIC #01380901

PETER CURRY
+1 760 431 4238
peter.curry@cushwake.com
LIC #01241186

 **CUSHMAN &
WAKEFIELD**

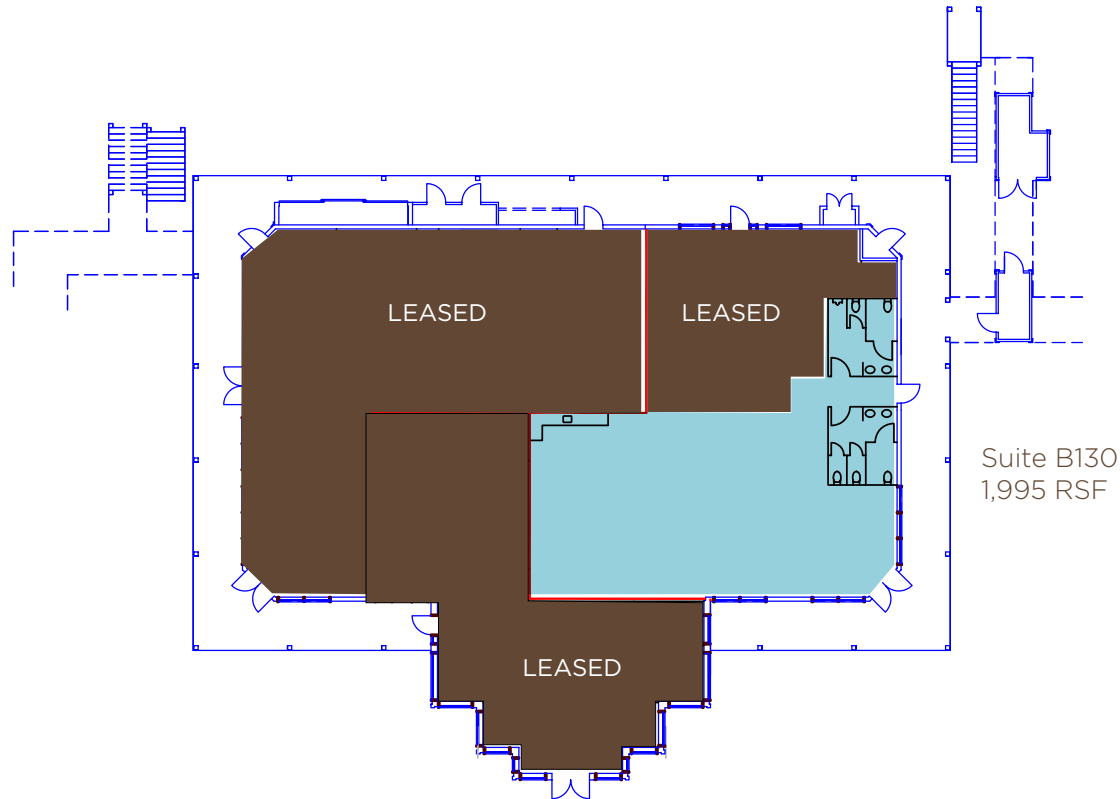
DANA MARINA PLAZA

24901 - 25001 DANA POINT HARBOR DRIVE, DANA POINT, CA 92629

FLOOR PLANS

24921 Building

First Floor



Offered exclusively by:

RETAIL

CHAD R. IAFRATE, CCIM
+1 760 431 4234
chad.iafrate@cushwake.com
LIC #01484290

OFFICE

BROOKS CAMPBELL
+1 760 431 4215
brooks.campbell@cushwake.com
LIC #01380901

PETER CURRY
+1 760 431 4238
peter.curry@cushwake.com
LIC #01241186

 **CUSHMAN &
WAKEFIELD**

DANA MARINA PLAZA

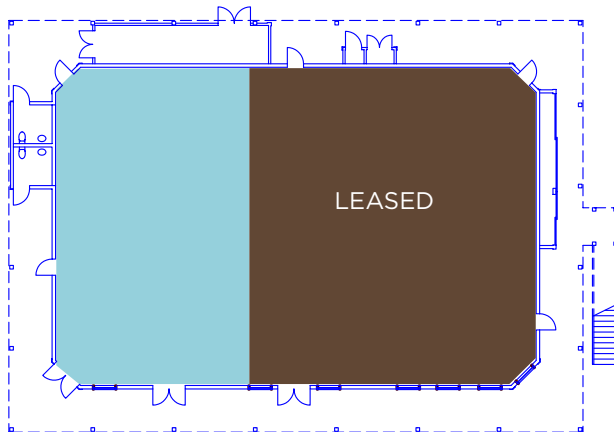
24901 - 25001 DANA POINT HARBOR DRIVE, DANA POINT, CA 92629

FLOOR PLANS

24941 Building

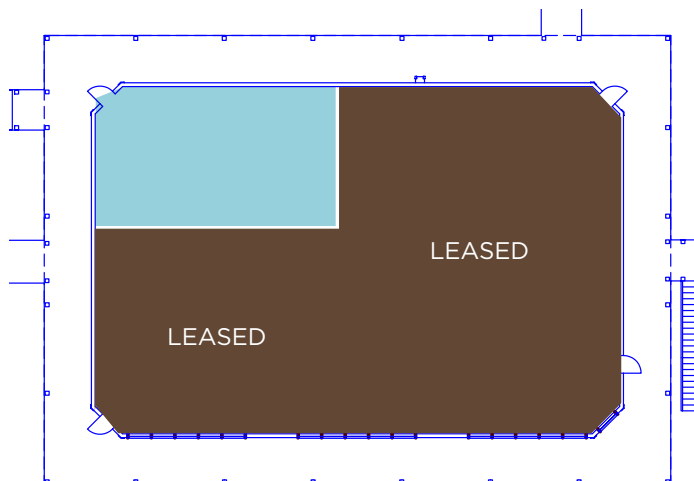
First Floor

Suite C100
2,116 RSF
Divisible



Second Floor

Suite C210
1,160 RSF



Offered exclusively by:

RETAIL

CHAD R. IAFRATE, CCIM
+1 760 431 4234
chad.iafrate@cushwake.com
LIC #01484290

OFFICE

BROOKS CAMPBELL
+1 760 431 4215
brooks.campbell@cushwake.com
LIC #01380901

PETER CURRY
+1 760 431 4238
peter.curry@cushwake.com
LIC #01241186

 **CUSHMAN &
WAKEFIELD**



GOLDEN LANTERN ST.

DANA POINT HARBOR DRIVE



DANA POINT HARBOR DRIVE

GOLDEN LANTERN ST.

DANA MARINA PLAZA

24901 - 25001 DANA POINT HARBOR DRIVE, DANA POINT, CA 92629

Owned by:



Offered exclusively by:

CHAD R. IAFRATE, CCIM
+1 760 431 4234
chad.iafrate@cushwake.com
LIC #01484290

BROOKS CAMPBELL
+1 760 431 4215
brooks.campbell@cushwake.com
LIC #01380901

PETER CURRY
+1 760 431 4238
peter.curry@cushwake.com
LIC #01241186



1000 Aviara Parkway
Suite 100
Carlsbad, CA 92011
P +1 760 431 4200
F +1 760 454 3869
cushmanwakefield.com

Cushman & Wakefield Copyright 2015. The information contained herein was lawfully obtained from sources we consider reliable. Cushman & Wakefield is not responsible and expressly disclaims all liability for errors, omissions, prior sales, withdrawal from the market or change in price. Seller (or Lessor, as the case may be) and broker make no representation as to the environmental condition of the property and recommend Purchaser's (or Lessee's) independent investigation.