

# 330 JACKSON / 615 BATTERY STREET

## 2ND FLOOR FOR LEASE

AVAILABLE NOW

Approx. 8,451 SF

San Francisco, California 94111



Very rare opportunity to acquire a Plug & Play full floor at the corner of Jackson Street and Battery Streets.

- Nicely built out with exposed high ceilings
- Full floor identity and efficiency
- Glass doors and walls
- Good natural light and windows
- Plug and play with the ability to acquire most of the furnishings
- Two separate lobbies (One company can have two identities and two separate addresses)
- Full HVAC plus operable windows
- Stable long-term ownership
- Storage in the basement

EXCLUSIVE LISTING BROKER:

**ANDREW THOMPSON**  
Executive Vice President

**(415) 686-1600**  
andrew@dpwcre.com

388 Market Street, Suite 1300  
San Francisco, California 94111  
CA BRE: 00987186

  
**DUNHILL PARTNERS WEST**  
Commercial Real Estate Brokerage & Investments

We have obtained the above information from sources we believe to be reliable, but no representations of any kind, expressed to implied, are being made as to the accuracy of such information. 05/14/20



EXCLUSIVE LISTING BROKER:

**ANDREW THOMPSON**  
Executive Vice President

**(415) 686-1600**  
andrew@dpwcre.com

388 Market Street, Suite 1300  
San Francisco, California 94111  
CA BRE: 00987186



We have obtained the above information from sources we believe to be reliable, but no representations of any kind, expressed or implied, are being made as to the accuracy of such information.



EXCLUSIVE LISTING BROKER:

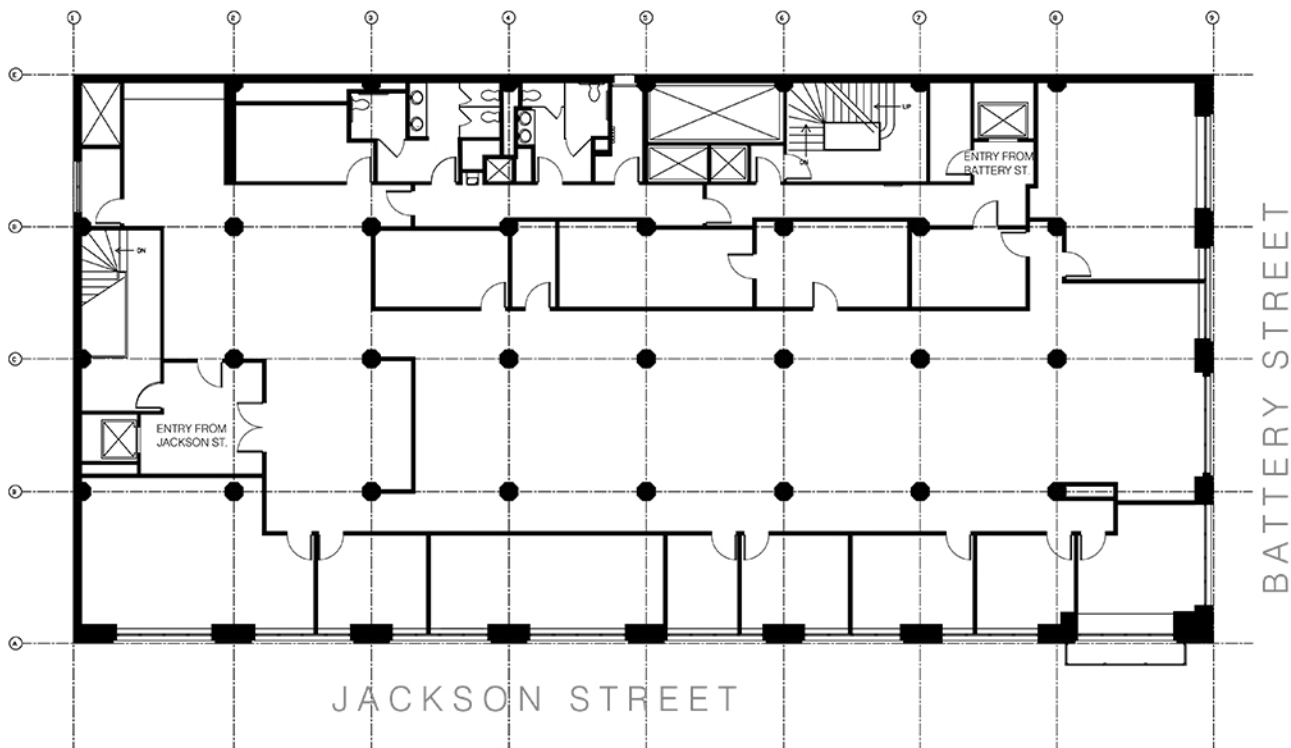
**ANDREW THOMPSON**  
Executive Vice President

**(415) 686-1600**  
andrew@dpwcre.com

388 Market Street, Suite 1300  
San Francisco, California 94111  
CA BRE: 00987186



We have obtained the above information from sources we believe to be reliable, but no representations of any kind, expressed or implied, are being made as to the accuracy of such information.



EXCLUSIVE LISTING BROKER:

**ANDREW THOMPSON**  
Executive Vice President

**(415) 686-1600**  
andrew@dpwcre.com

388 Market Street, Suite 1300  
San Francisco, California 94111  
CA BRE: 00987186



We have obtained the above information from sources we believe to be reliable, but no representations of any kind, expressed or implied, are being made as to the accuracy of such information.