

OFFICE SUITES FOR LEASE

+/- 604 – 3,960 RSF

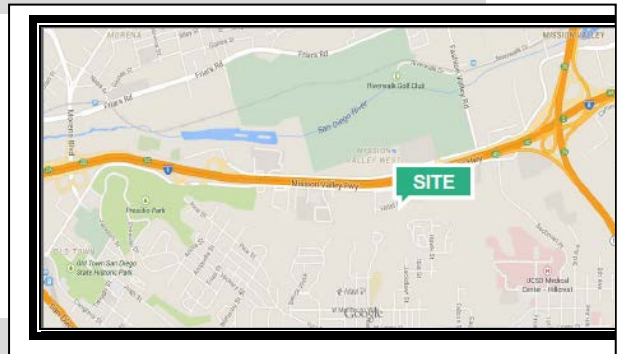
4420 Hotel Circle Court

San Diego, CA 92108



Property Features

- Lease Rate: \$1.85 + electric
- 3 story 32,953 SF Building
- Built in 1978; Remodeled in 2001
- Parking Ratio: 3.3/1000 – Some covered parking
- Lush landscaping w/ open air lobby & water feature
- Operable windows
- Excellent view of Mission Valley
- Zoning: MV-CO



Location Features

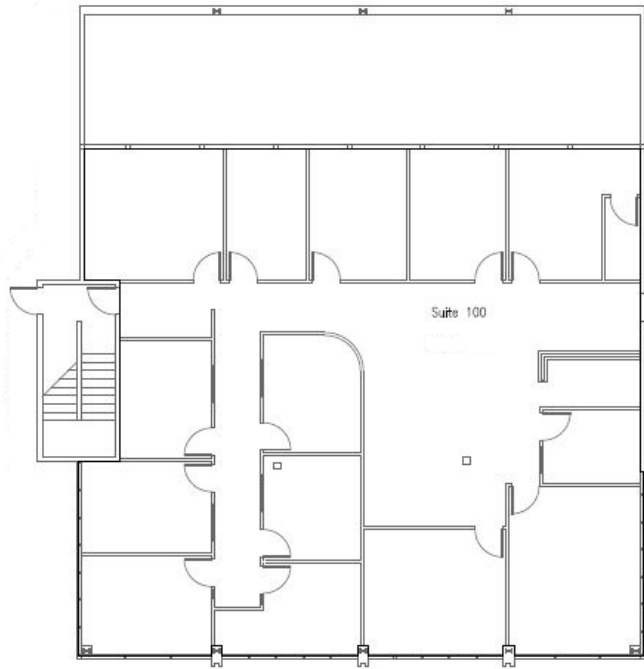
- Prominent West Mission Valley location
- Great visibility from Interstate 8
- Easy access to Interstate 8, Interstate 5 and Highway 163

No warranty or representation, express or implied, is made as to the accuracy of the information contained herein, and the same is submitted subject to errors, omissions, change of price, rental or other conditions, prior sale, lease or financing, or withdrawal without notice, and of any special listing conditions imposed by our principals no warranties or representations are made as to the condition of the property or any hazards contained therein are to be implied.

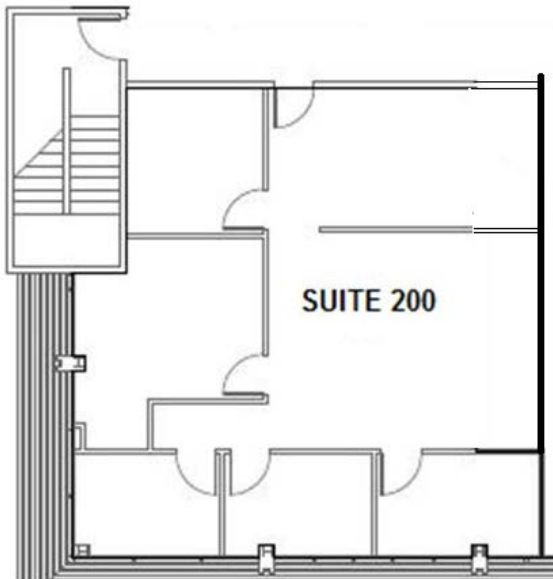
Don Agan (760) 828-7512 - CA RE License # 0089992

AVAILABLE SUITES:

Suite #100 ◦ 3,960 RSF



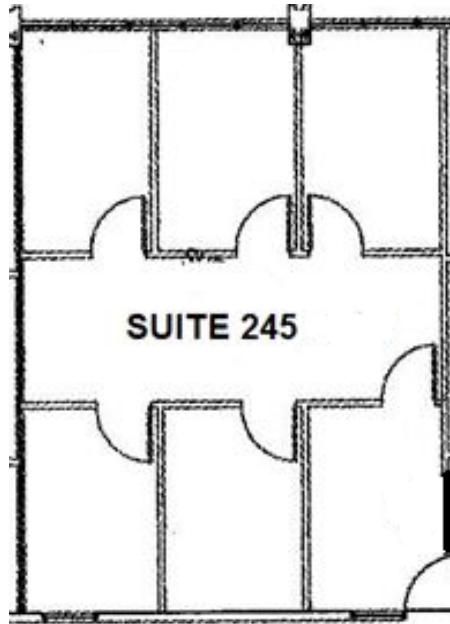
Suite #200 ◦ 1,252 RSF



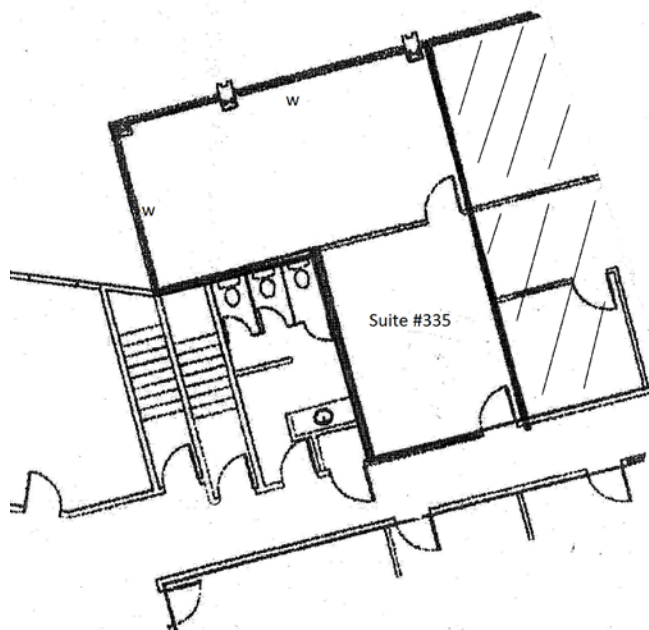
No warranty or representation, express or implied, is made as to the accuracy of the information contained herein, and the same is submitted subject to errors, omissions, change of price, rental or other conditions, prior sale, lease or financing, or withdrawal without notice, and of any special listing conditions imposed by our principals no warranties or representations are made as to the condition of the property or any hazards contained therein are to be implied.

Don Agan (760) 828-7512 - CA RE License # 0089992

Suite #245 ◦ 916 RFS



Suite #335 ◦ 734 RSF



No warranty or representation, express or implied, is made as to the accuracy of the information contained herein, and the same is submitted subject to errors, omissions, change of price, rental or other conditions, prior sale, lease or financing, or withdrawal without notice, and of any special listing conditions imposed by our principals no warranties or representations are made as to the condition of the property or any hazards contained therein are to be implied.

(619) 682-3888 - CA RE License # 00860989

