

Pacific Business Park Building 3

6918 S 220th Street
Kent, WA

± 5,000 SF shell
± 1,863 SF office

14' clear height

Available July 1, 2017

3 dock-high doors
Ability to add 1 grade-level door

\$0.58 shell / \$0.85 office

Corner location

Comcast Cable available



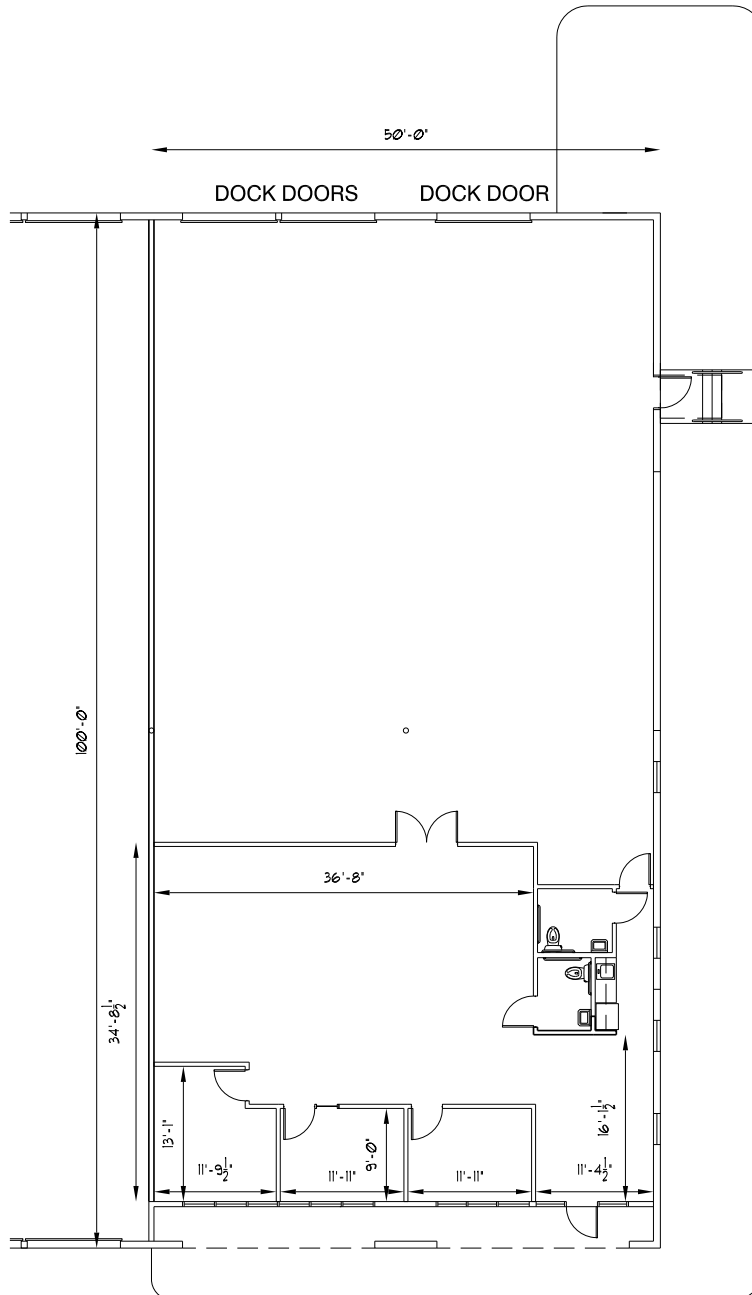
Tremendous access to I-5 and SR-167 via S 212th Street



Doug Klein, SIOR
206.248.7348
dklein@kiddermathews.com

Kraig Heeter, SIOR
206.248.7313
kheeter@kiddermathews.com

Pacific Business Park Building 3



Contact

Doug Klein, SIOR
206.248.7348
dklein@kiddermathews.com

Kraig Heeter, SIOR
206.248.7313
kheeter@kiddermathews.com