

# FOR SALE | ±6,082 Square Feet

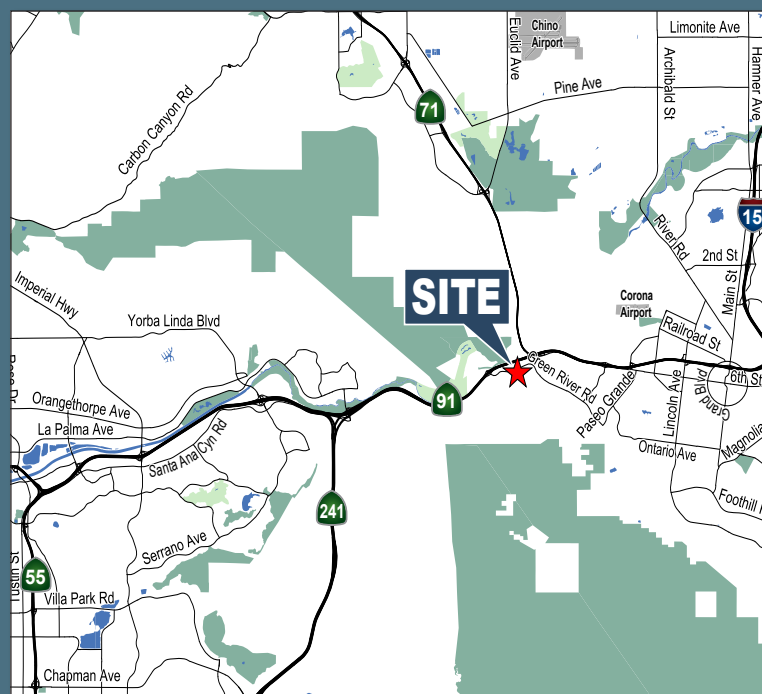
## Freestanding Office Building



## 4210 Green River Road, Corona

### PROPERTY FEATURES

- High Image Freestanding Office Building
- Built in 2006
- 4:1000 Parking Ratio (24 Parking Stalls)
- 100% Built-out First and Second Floor Office
- Divisible Building into Two (2) Separate Units
- ±5,227 Square Foot Land Parcel
- Ample Glassline on all Perimeter Offices
- Restroom and Breakroom Amenities on Both Floors
- Close Proximity to Numerous Restaurants and Retail
- Located at the Entrance to the 91 Express Lanes
- Convenient Access to the 91, 241, 15 and 55 Freeways



**Mike Vernick, CCIM, SIOR**

Vice President

714.935.2354

MVernick@voitco.com

Lic. #01420885

2400 E. Katella Avenue, Ste. 750, Anaheim, CA 92806 • 714.978.7880 • 714.978.9431 Fax

Lic #01333376 | www.voitco.com | www.hefnerteam.com

# Voit

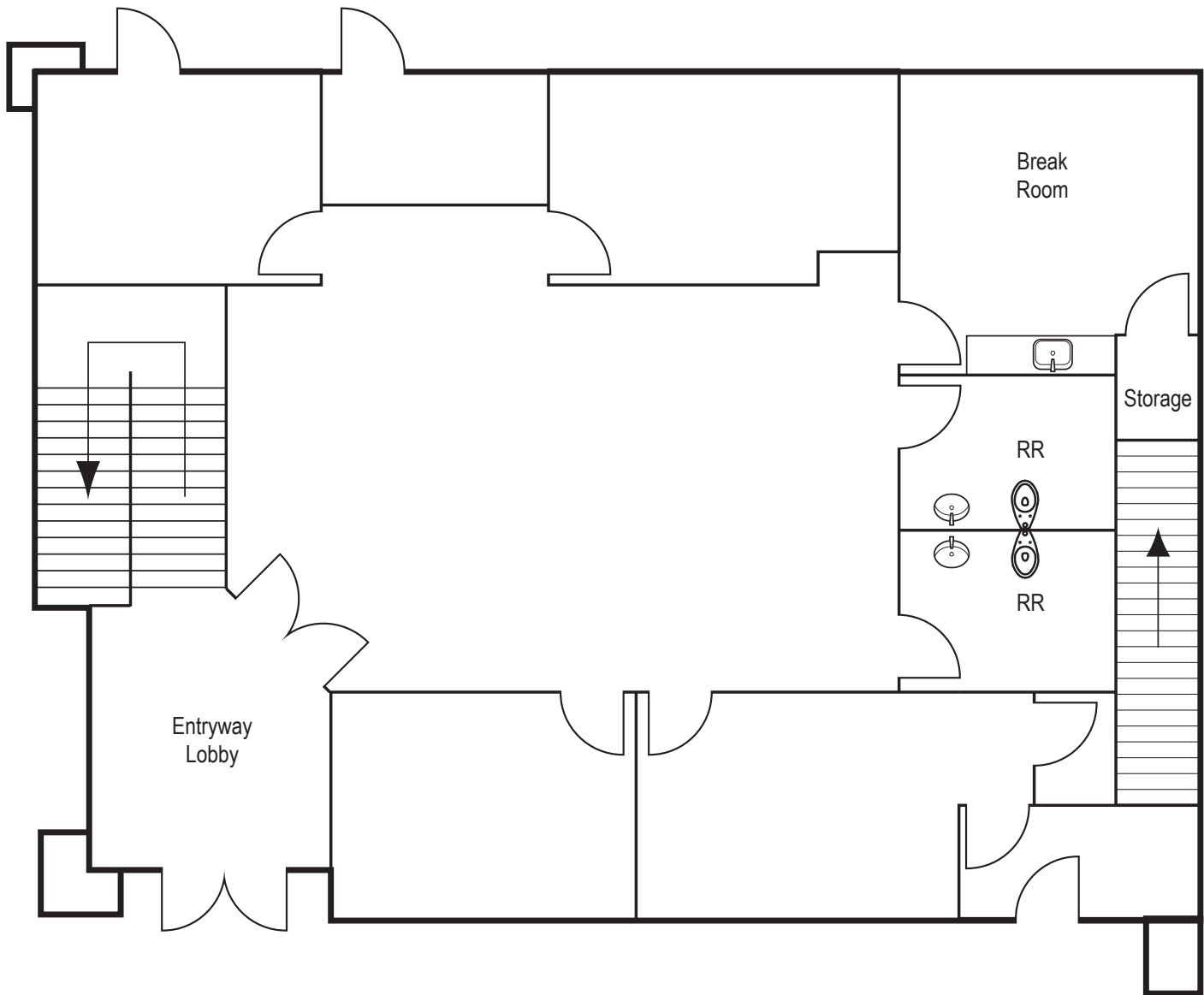
REAL ESTATE SERVICES

# ±6,082 SQ. FT. FOR SALE

## 4210 GREEN RIVER ROAD, CORONA, CA

### Floor Plan

### First Floor: ±3,041 Sq. Ft.



**Mike Vernick, CCIM, SIOR**  
Vice President  
714.935.2354  
MVernick@voitco.com  
Lic. #01420885

2400 E. Katella Avenue, Ste. 750, Anaheim, CA 92806 • 714.978.7880 • 714.978.9431 Fax  
Lic #01333376 | www.voitco.com | www.hefnerteam.com

# Voit

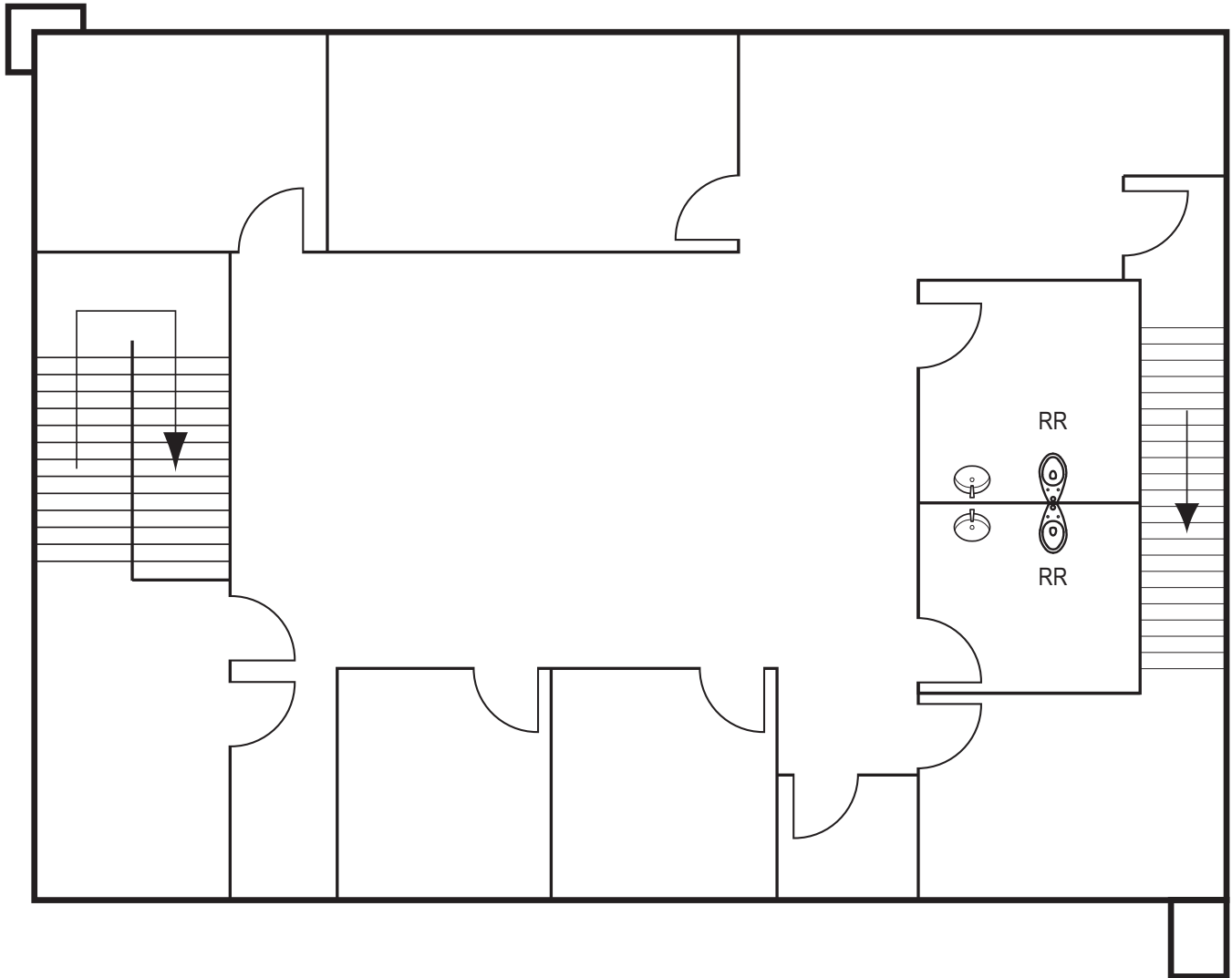
REAL ESTATE SERVICES

# ±6,082 SQ. FT. FOR SALE

## 4210 GREEN RIVER ROAD, CORONA, CA

### Floor Plan

### Second Floor: ±3,041 Sq. Ft.



**Mike Vernick, CCIM, SIOR**  
Vice President  
714.935.2354  
MVernick@voitco.com  
Lic. #01420885

2400 E. Katella Avenue, Ste. 750, Anaheim, CA 92806 • 714.978.7880 • 714.978.9431 Fax  
Lic #01333376 | www.voitco.com | www.hefnerteam.com

# Voit

REAL ESTATE SERVICES