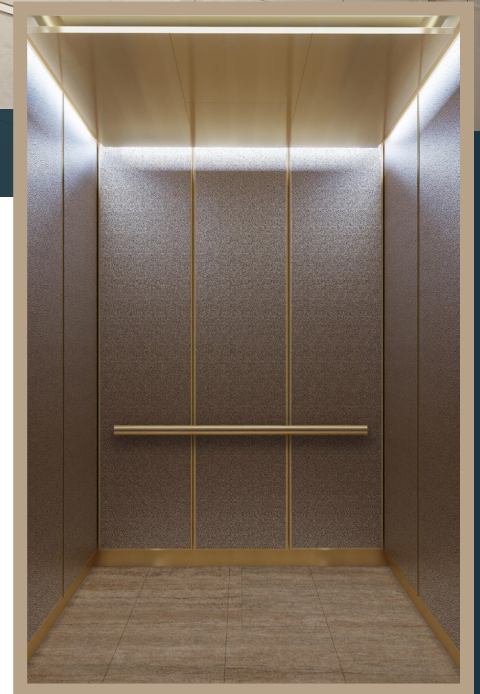


37W 28ST



FOR LEASE

AVAILABILITY:

| Floor | Size | Possession | Condition |
|-------------|----------|------------|---------------------|
| Entire 4th | 5,000 SF | Immediate | To be White-boxed |
| Entire 10th | 5,000 SF | Immediate | Built move-in ready |

PROPERTY FEATURES:

- Lobby and façade renovation underway
- Close proximity to major subway lines
- Immediate availabilities
- Located in the heart of NoMad/Flatiron/Madison Sq. Park
- Tenant controlled HVAC systems
- Flexible term lengths available

FOR MORE INFORMATION, PLEASE CONTACT:

Adam Ardise

212 318 9741

adam.ardise@cushwake.com

Stephen Bellwood

212 318 9785

stephen.bellwood@cushwake.com

Gordon Hough

212 895 8927

gordon.l.hough@cushwake.com

Andrew Chase

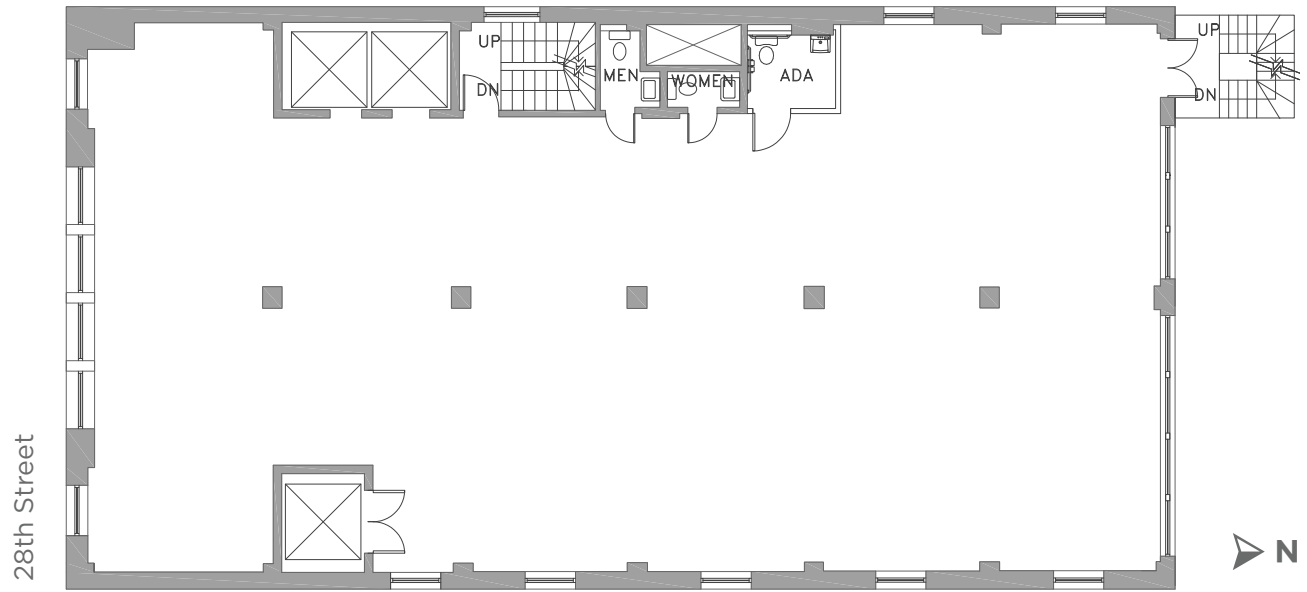
212 709 0705

andrew.chase@cushwake.com

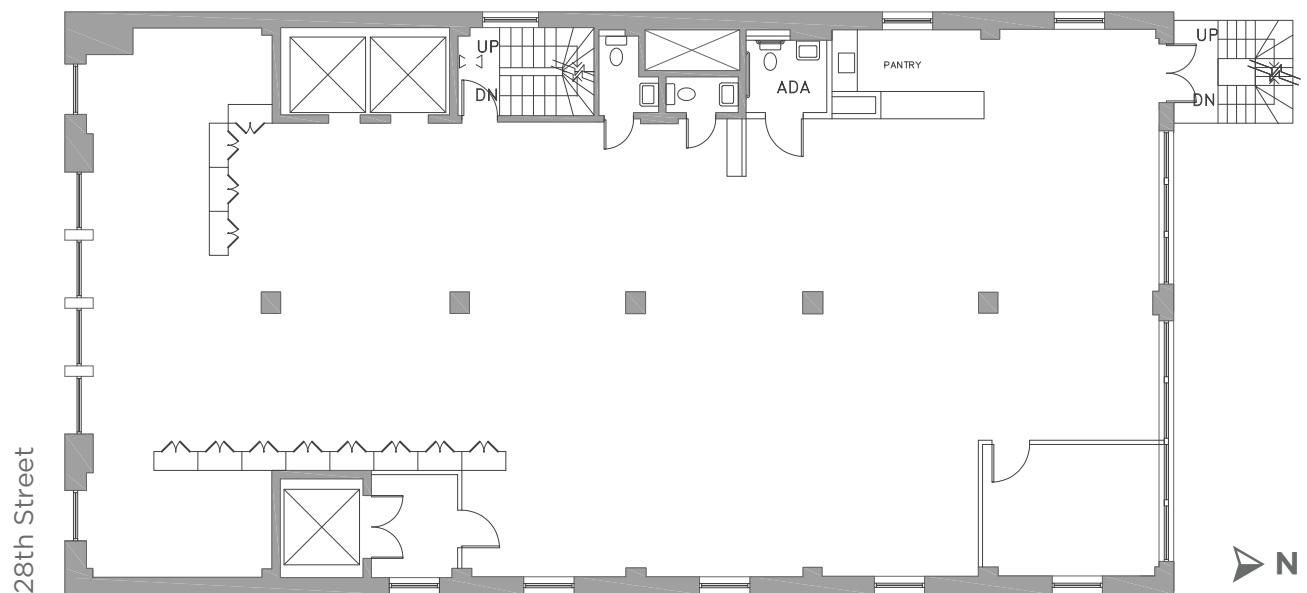
37W 28ST

FLOOR PLANS

ENTIRE 4TH FLOOR: 5,000 SF



ENTIRE 10TH FLOOR: 5,000 SF



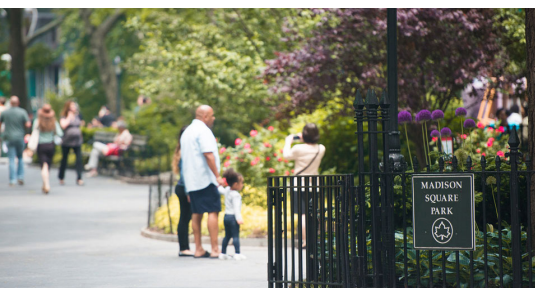
37W
28ST

BUILDING PHOTO



37W 28ST

TRANSIT & AMENITY MAP



FOR MORE INFORMATION, PLEASE CONTACT:

Adam Ardise
212 318 9741
adam.ardise@cushwake.com

Stephen Bellwood
212 318 9785
stephen.bellwood@cushwake.com

Gordon Hough
212 895 8927
gordon.l.hough@cushwake.com

Andrew Chase
212 709 0705
andrew.chase@cushwake.com