

1287 Inglewood Avenue, St. Helena, CA 94576

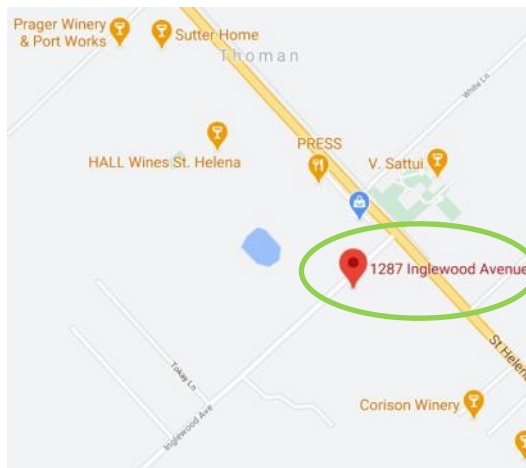
Quality Office for Sublease



±1,973 SF

Call for Pricing

- Ground Floor Office
- Grand Conference Room
- Open Center for Cubicles/Social Distancing
- Two Large Private Offices
- Storage Room
- Mail/Copy Room
- Kitchenette
- Good Parking
- Nice Window Lines
- Shared Restrooms
(±481 SF of Common Area)



Sublease through March 31, 2025



Michael J. Moffett
(707) 479-1976
mmoffett@cnapavalley.com
Lic.#00946472

Cathy D'Angelo Holmes
(707) 304-3338
cholmes@cnapavalley.com
Lic.#01355085

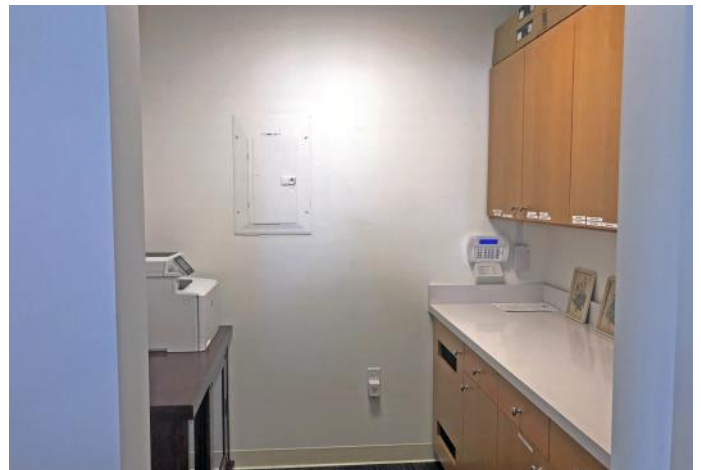


BROKERS OF THE VALLEY
1040 MAIN ST. #101
NAPA, CA 94559
(707) 224-8454

NAPACOMMERCIALPROPERTIES.COM

AVAILABLE FOR SUBLEASE

PHOTO GALLERY



Michael J. Moffett
(707) 479-1976
mmoffett@cnapavalley.com
Lic.#00946472

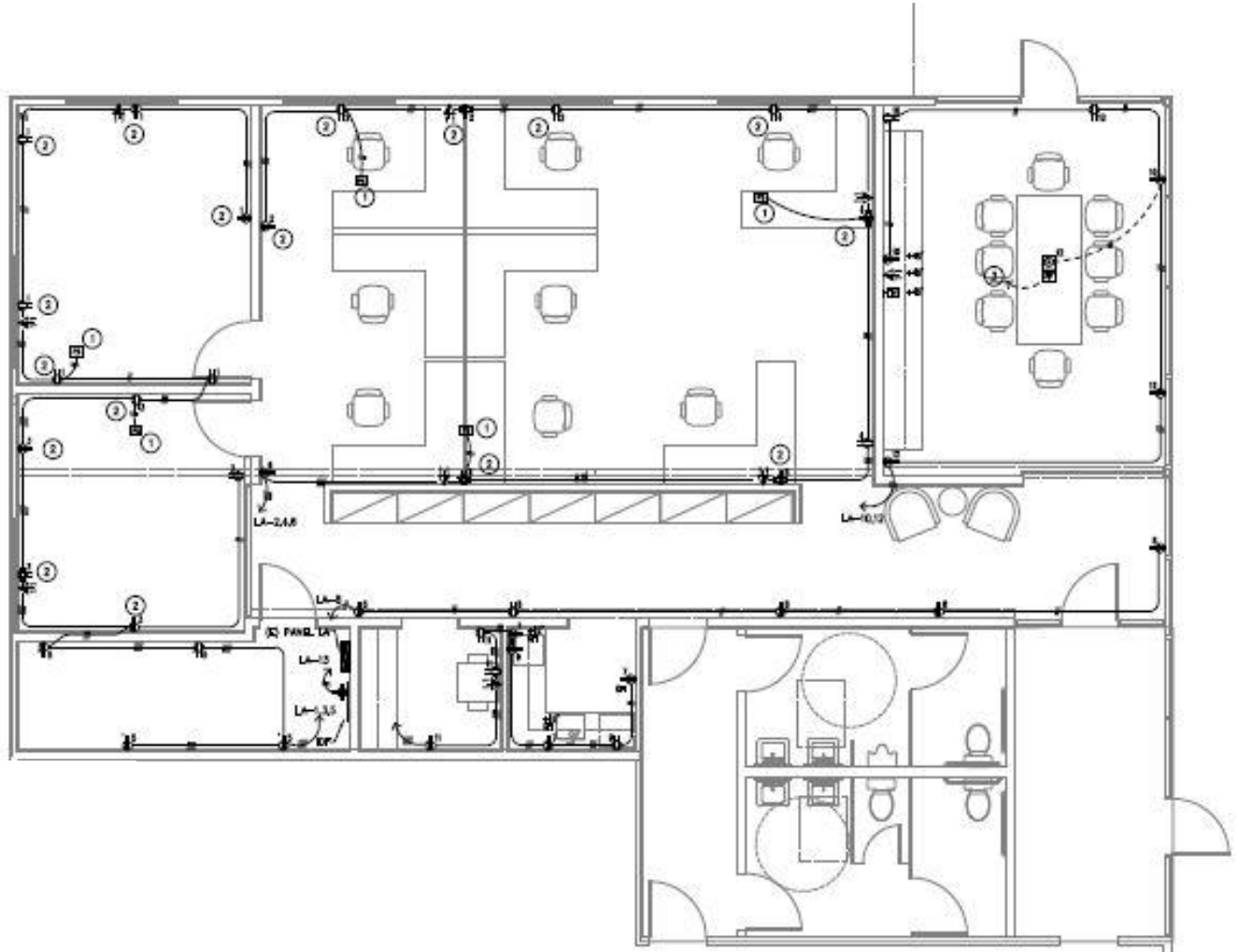
Cathy D'Angelo Holmes
(707) 304-3338
cholmes@cnapavalley.com
Lic.#01355085



BROKERS OF THE VALLEY
1040 MAIN ST. #101
NAPA, CA 94559
(707) 224-8454

NAPACOMMERCIALPROPERTIES.COM

FLOOR PLAN



Michael J. Moffett
(707) 479-1976
mmoffett@cnapavalley.com
Lic.#00946472

Cathy D'Angelo Holmes
(707) 304-3338
cholmes@cnapavalley.com
Lic.#01355085



BROKERS OF THE VALLEY
1040 MAIN ST. #101
NAPA, CA 94559
(707) 224-8454

NAPACOMMERCIALPROPERTIES.COM