

# ±167 MIXED-USE ACRES (ALL OR PART)

SWC LOOP 303 & GREENWAY ROAD | SURPRISE, ARIZONA

**LOCATION** Property is located at the southwest corner of Loop 303 and Greenway Road in Surprise, Arizona

**PRICE** Submit

**SIZE** ±167 acres

**ZONING** PGV-1, PGV-2, PGV-E- Mixed Use Opportunity within Prāsada Gateway: Retail, Hospital, Residential, Office, Medical Office, Hospitality, Mixed Use

**PARCEL** 501-12-015J, 501-12-018F, 501-12-914, 501-12-925, 501-12-926

**UTILITIES**

Sewer - City of Surprise

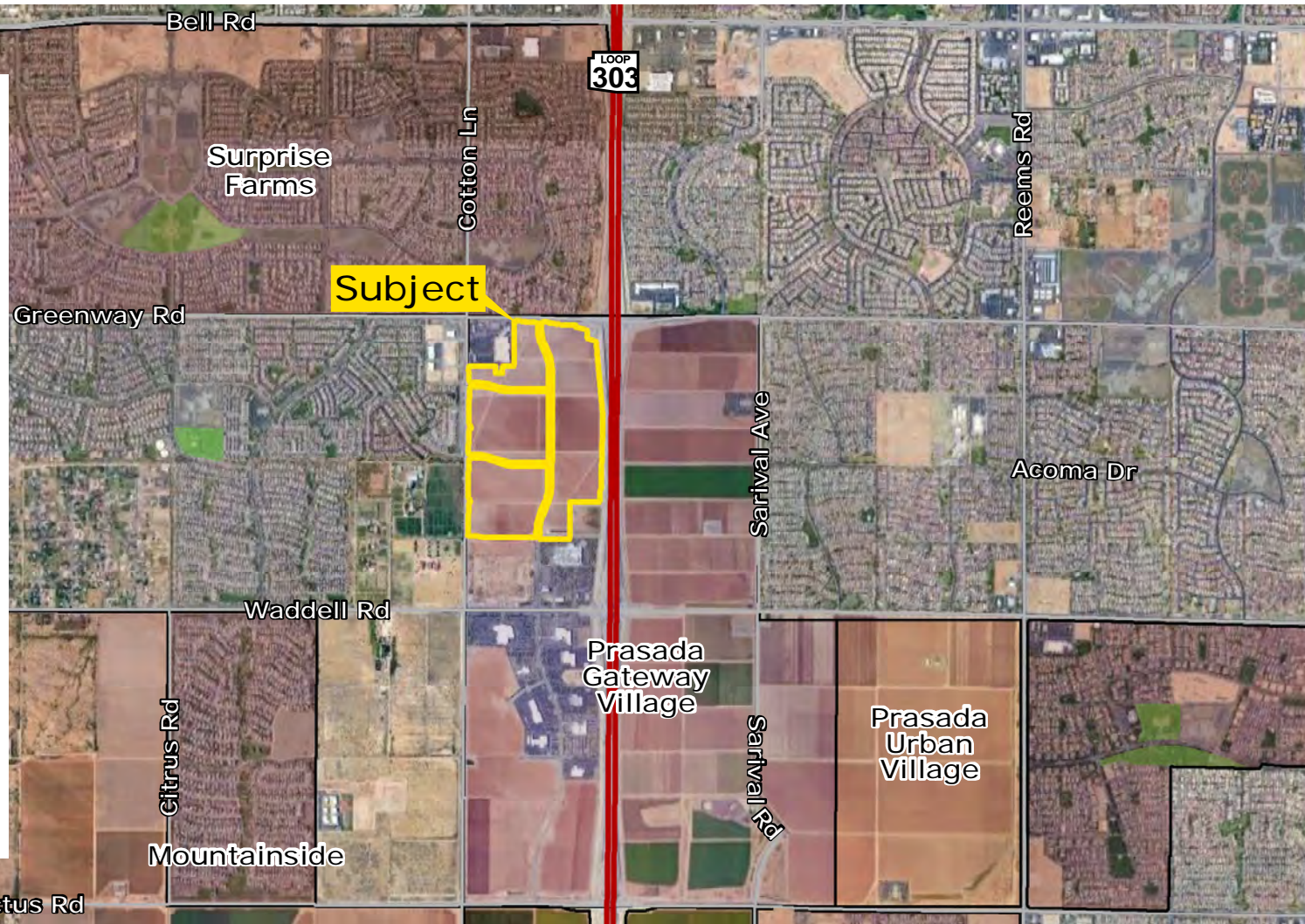
Water - EPCOR

Electric - APS

Gas - Southwest Gas

**COMMENTS**

- Prāsada planned area development, which encompasses 3,355 acres of employment, automall, power centers, and regional malls along with over 14,000 residential units.
- Full interchange at Greenway Road
- Freeway frontage available along 303
- Site is in a unique "pocket of opportunity"
- Property is within territory in the vicinity of a military airport. [Click here for more information.](#)

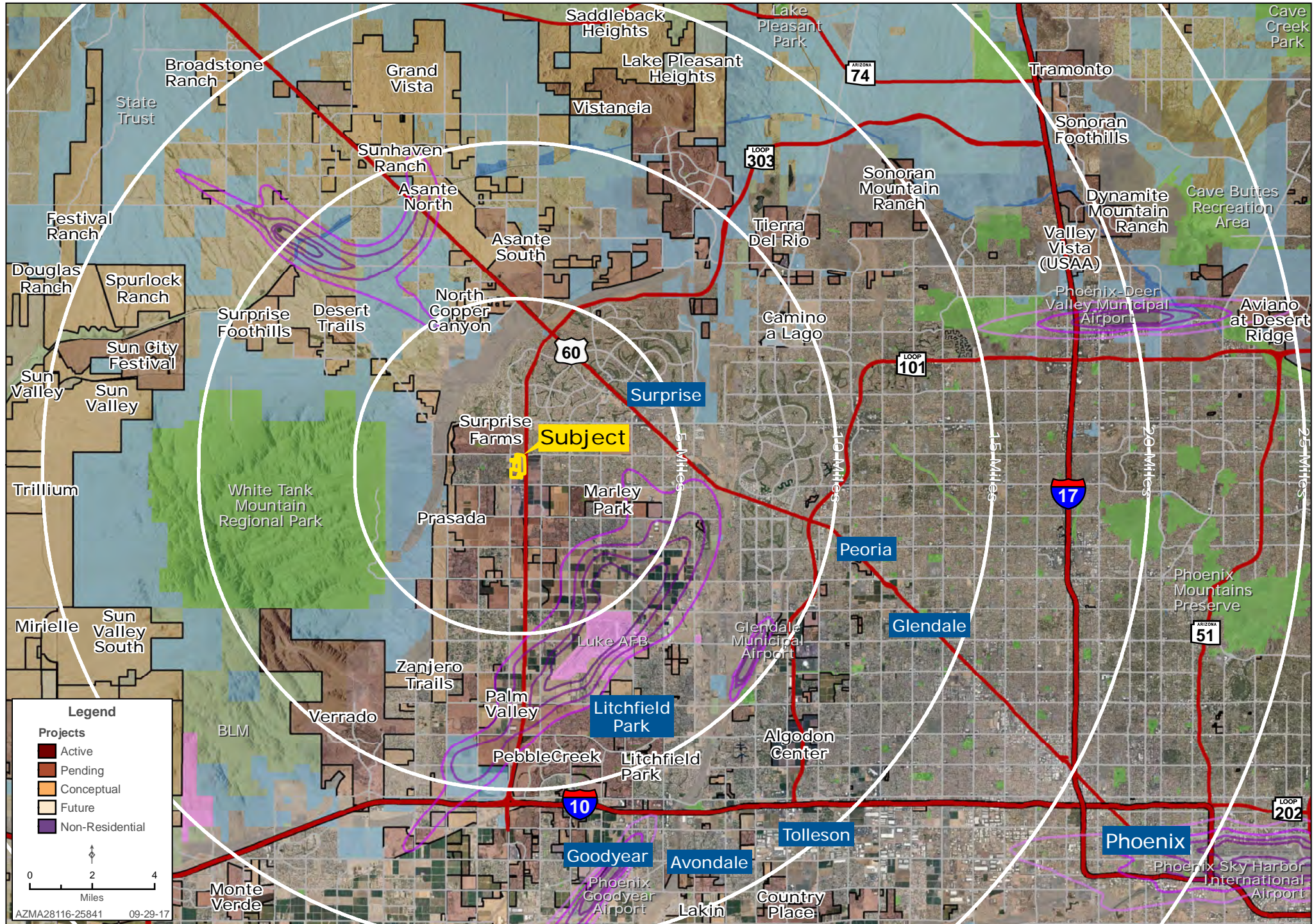


Michele Pino | mpino@landadvisors.com Mike Brinkley | mbrinkley@landadvisors.com

Mike Schwab | mschwab@landadvisors.com Chad T. Russell, P.C. | crussell@landadvisors.com

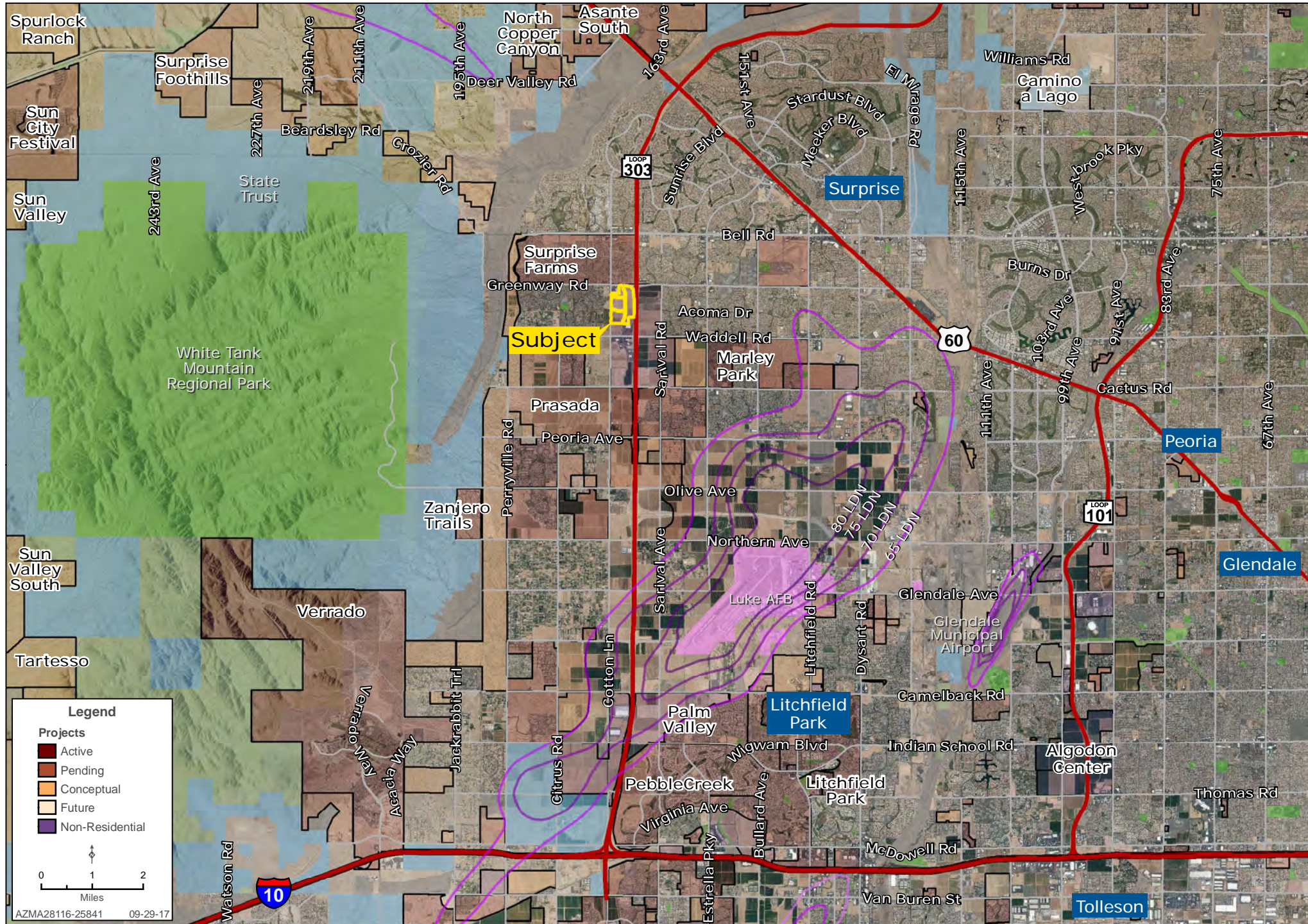
4900 North Scottsdale Road, Suite 3000, Scottsdale, Arizona 85251 ph. 480.483.8100 | www.landadvisors.com

The information contained herein is from sources deemed reliable. We have no reason to doubt its accuracy but do not guarantee it. It is the responsibility of the person reviewing this information to independently verify it. This package is subject to change, prior sale or complete withdrawal. AZMA28116-8.1.18



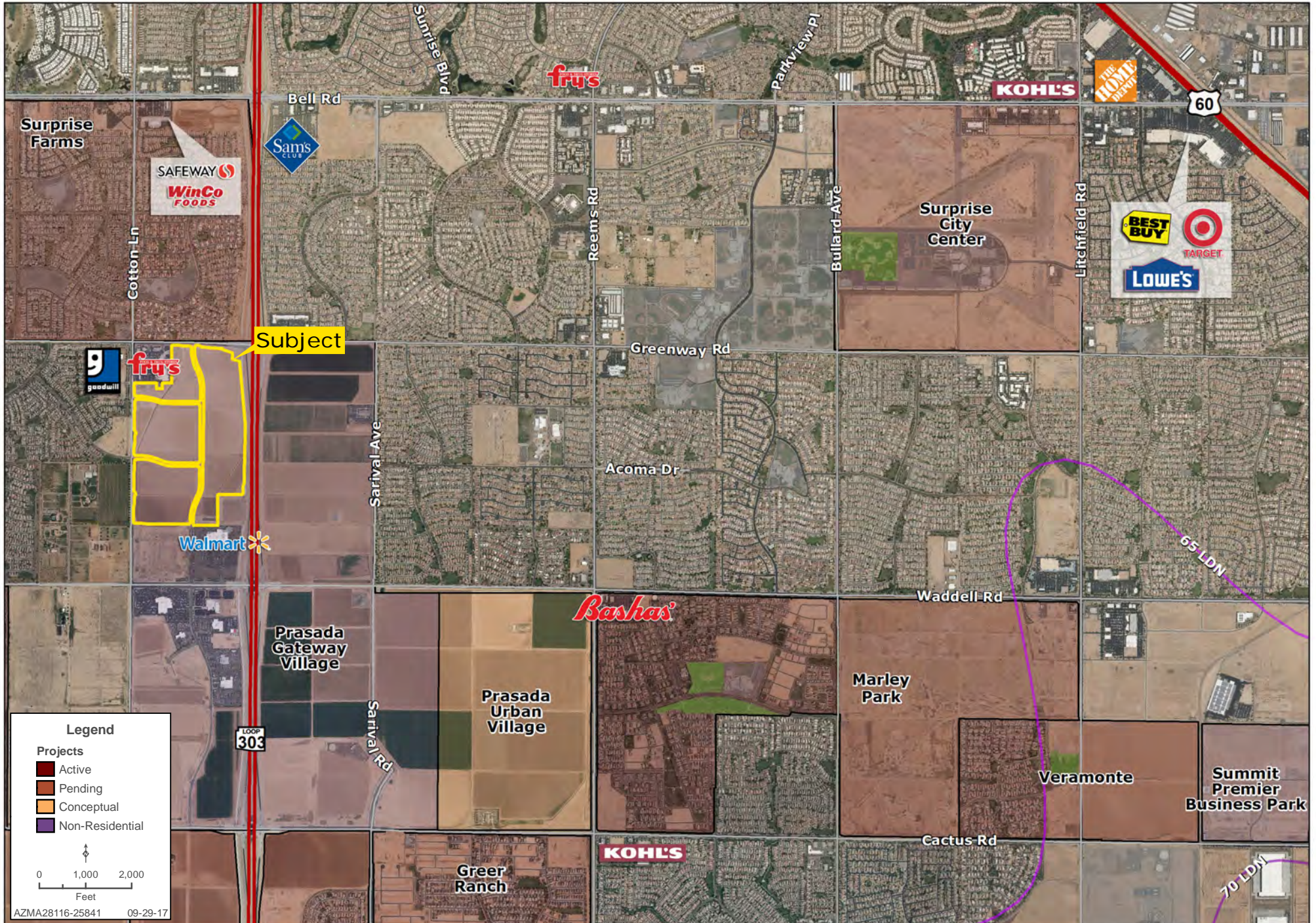
# SURROUNDING DEVELOPMENT MAP

480.483.8100 | www.landadvisors.com



# SURROUNDING RETAIL MAP

480.483.8100 | www.landadvisors.com



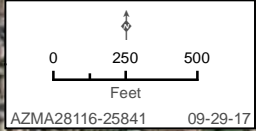
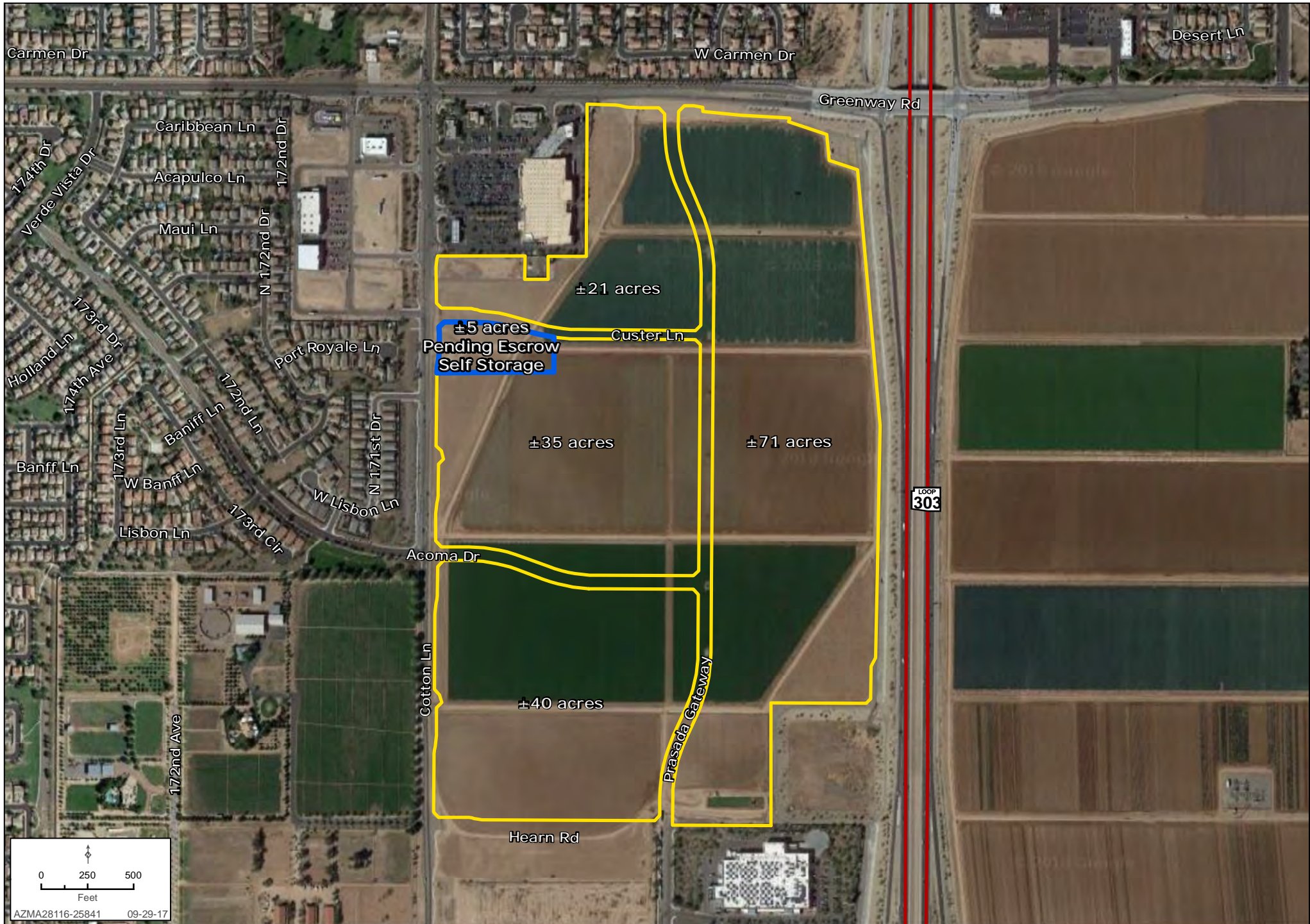
# SURROUNDING AREA MAP

480.483.8100 | www.landadvisors.com



# PROPERTY DETAIL MAP

480.483.8100 | www.landadvisors.com



# FLOODPLAIN MAP

480.483.8100 | www.landadvisors.com

