

18250 WEAVER STREET
DETROIT, MICHIGAN

INVESTMENT FOR SALE
29,712 Square Feet Available



**SIGNATURE
ASSOCIATES**
KNOW SIGNATURE | KNOW RESULTS

VACANT APARTMENT BUILDING



PROPERTY FEATURES

- VACANT 40 unit apartment building
- 3 levels (lower level partially below grade)
- (8) 368 square foot studio apartments
- (29) 598 square foot 1 bedroom apartments
- (3) 785 square foot 2 bedroom, 1 bath apartments
- Building needs to be rebuilt
- 30 car on-site parking
- Sale Price: \$349,000



For more information, please contact:

CHRIS MONSOUR
(248) 948 0107
cmonsour@signatureassociates.com

JOE STACK
(248) 359 0615
jstack@signatureassociates.com

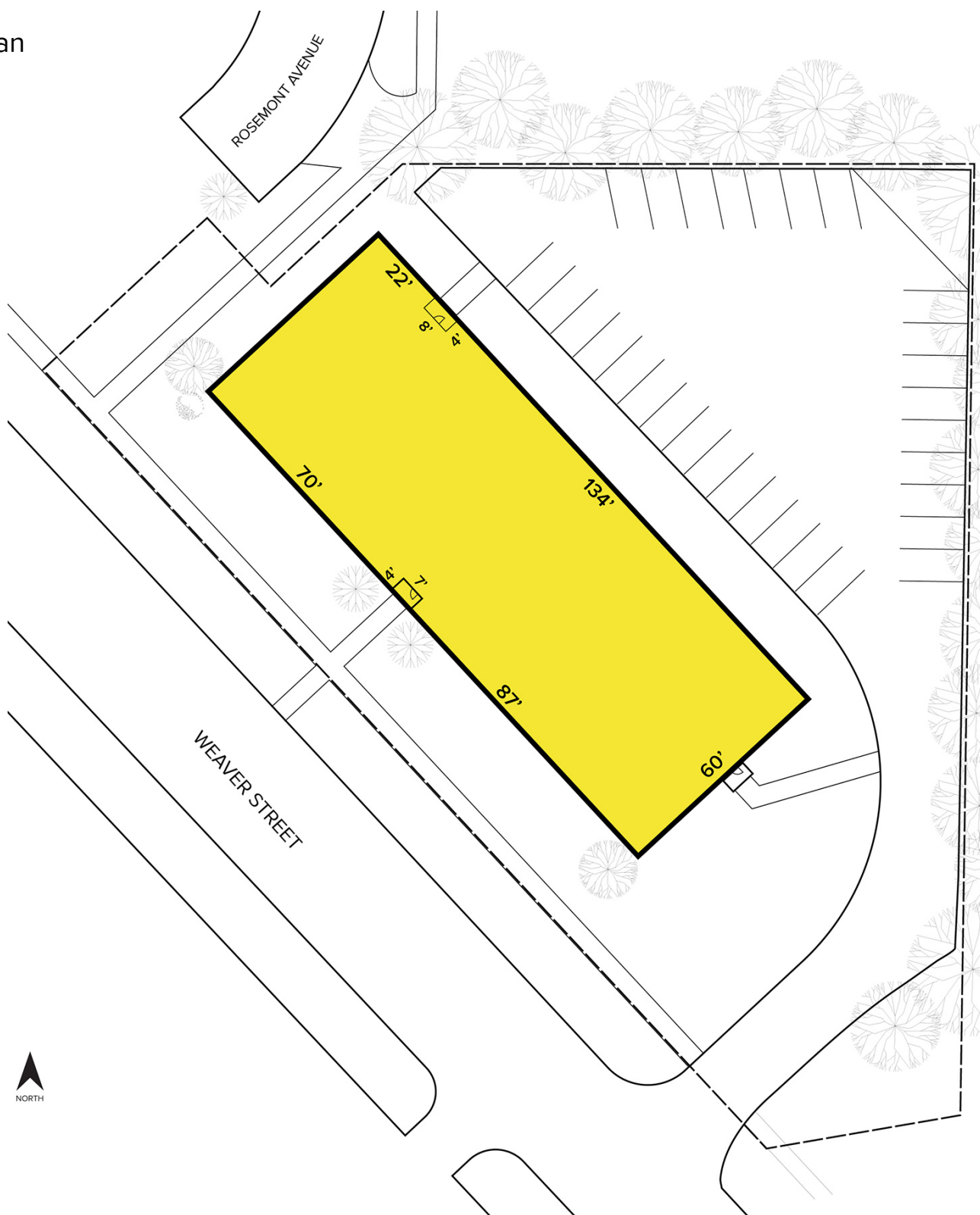
SIGNATURE ASSOCIATES
One Towne Square, Suite 1200
Southfield, MI 48076
www.signatureassociates.com

18250 Weaver Street - Detroit, Michigan

Investment for Sale

29,712
Square Feet
AVAILABLE

Site Plan



For more information, please contact:

CHRIS MONSOUR

(248) 948 0107

cmonsour@signatureassociates.com

JOE STACK

(248) 359 0615

jstack@signatureassociates.com

SIGNATURE ASSOCIATES

One Towne Square, Suite 1200

Southfield, MI 48076

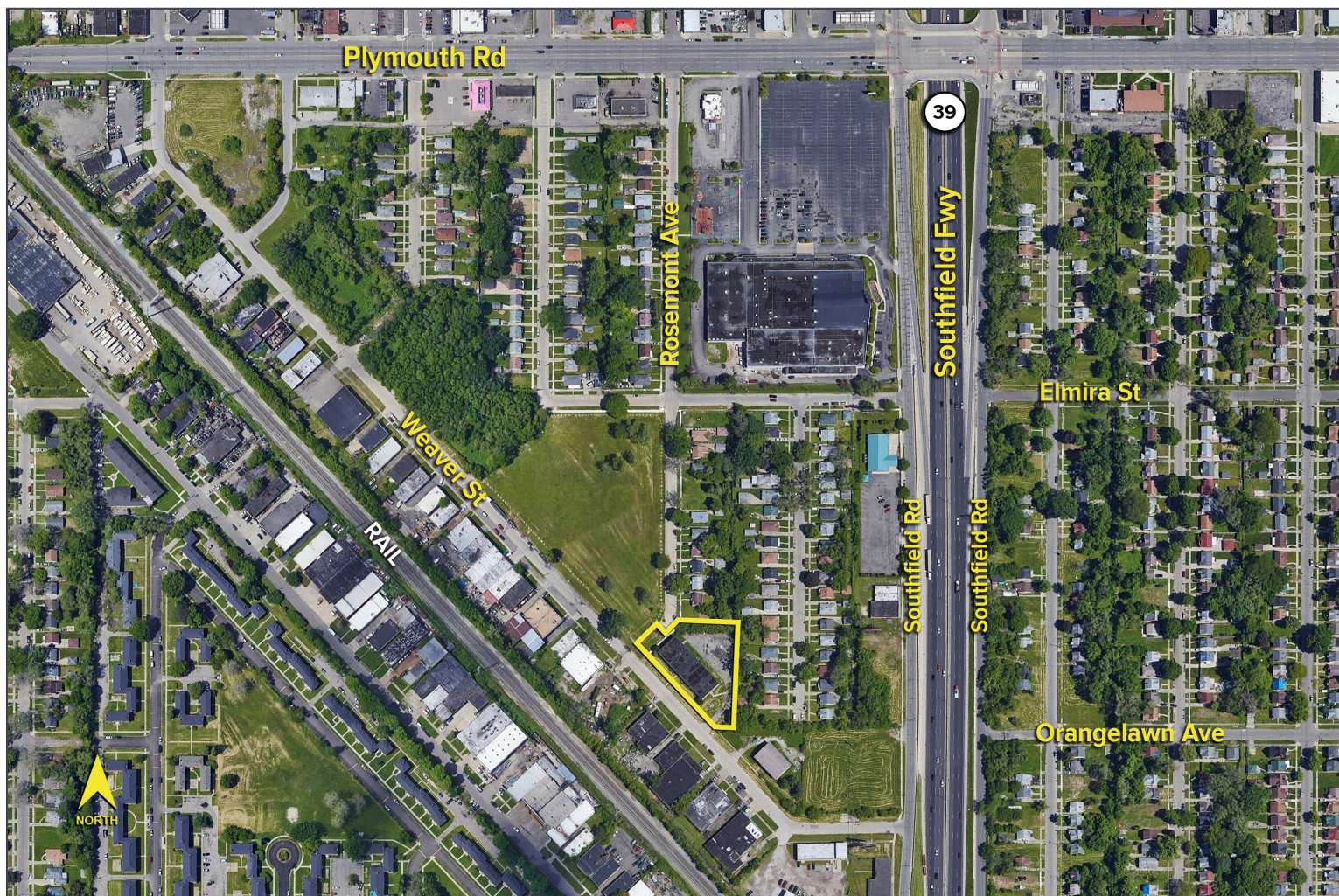
www.signatureassociates.com

18250 Weaver Street - Detroit, Michigan

Investment for Sale

29,712
Square Feet
AVAILABLE

Aerial



For more information, please contact:

CHRIS MONSOUR
(248) 948 0107
cmonsour@signatureassociates.com

JOE STACK
(248) 359 0615
jstack@signatureassociates.com

SIGNATURE ASSOCIATES
One Towne Square, Suite 1200
Southfield, MI 48076
www.signatureassociates.com

Information is subject to verification and no liability for errors or omissions is assumed. Price is subject to change and listing withdrawal.