

7023 E 12TH TERRACE

KANSAS CITY, MO 64126



HIGHLIGHTS

- » 30,000 Warehouse/Manufacturing
- » 8,000 Office with furniture
- » Showroom with work room
- » Clean room for product assembly
- » Parking and fenced Lot

FOR LEASE \$3/SF/YR INDUSTRIAL GROSS

DEMOGRAPHICS

| | 1 Mile | 3 Mile | 5 Mile |
|---------------------------|----------|----------|----------|
| 2017 POPULATION | 8,344 | 69,381 | 176,444 |
| 2017 AVG HOUSEHOLD INCOME | \$31,512 | \$40,052 | \$47,008 |

John Sweeney, CCIM

Office: 913-945-3718

Mobile 913-461-6326

Email: john@reececommercial.com

Matt Watkins

Office: 913-266-5424

Mobile 816-908-9447

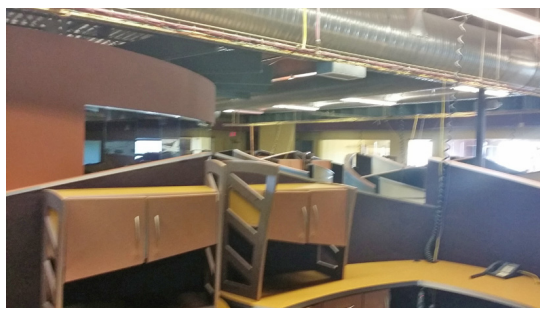
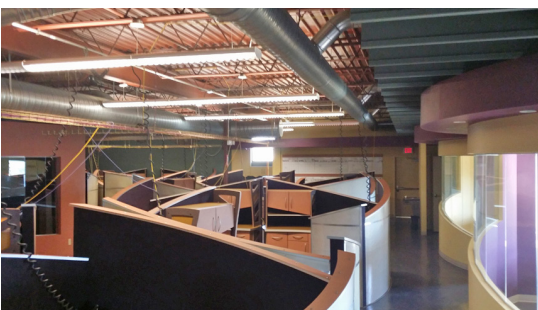
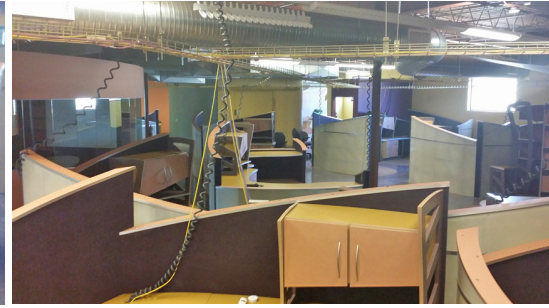
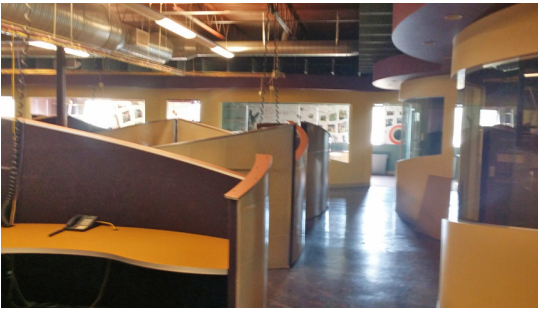
Email: matt@reececommercial.com

The information above has been obtained from sources believed reliable. While we do not doubt its accuracy we have not verified it and make no guarantee, warranty or representation about it. It is your responsibility to independently confirm its accuracy and completeness. Any projections, opinions, assumptions, or estimates used are for example only and do not represent the current or future performance of the property. You and your advisors should conduct a careful, independent investigation of the property to determine to your satisfaction the suitability of the property for your needs.

© 2017

PHOTOS

7023 E 12TH TERR, KANSAS CITY, MO

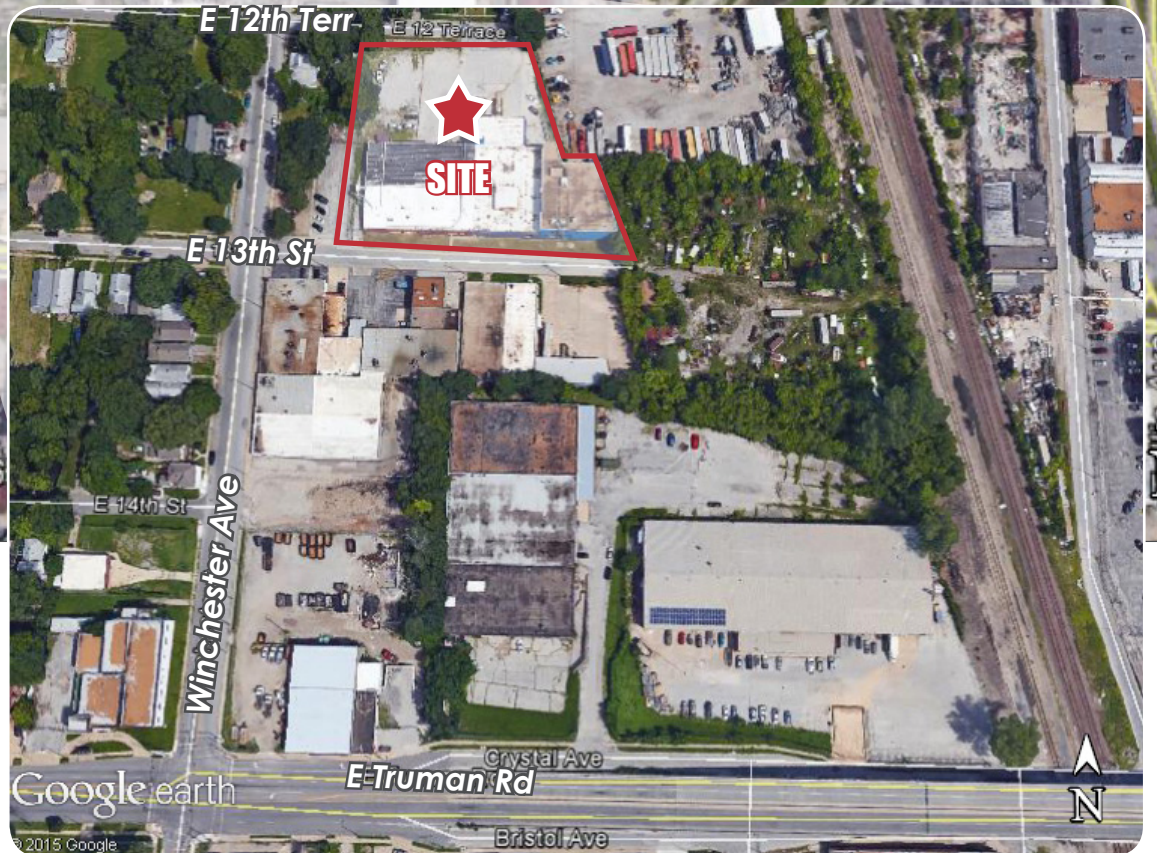
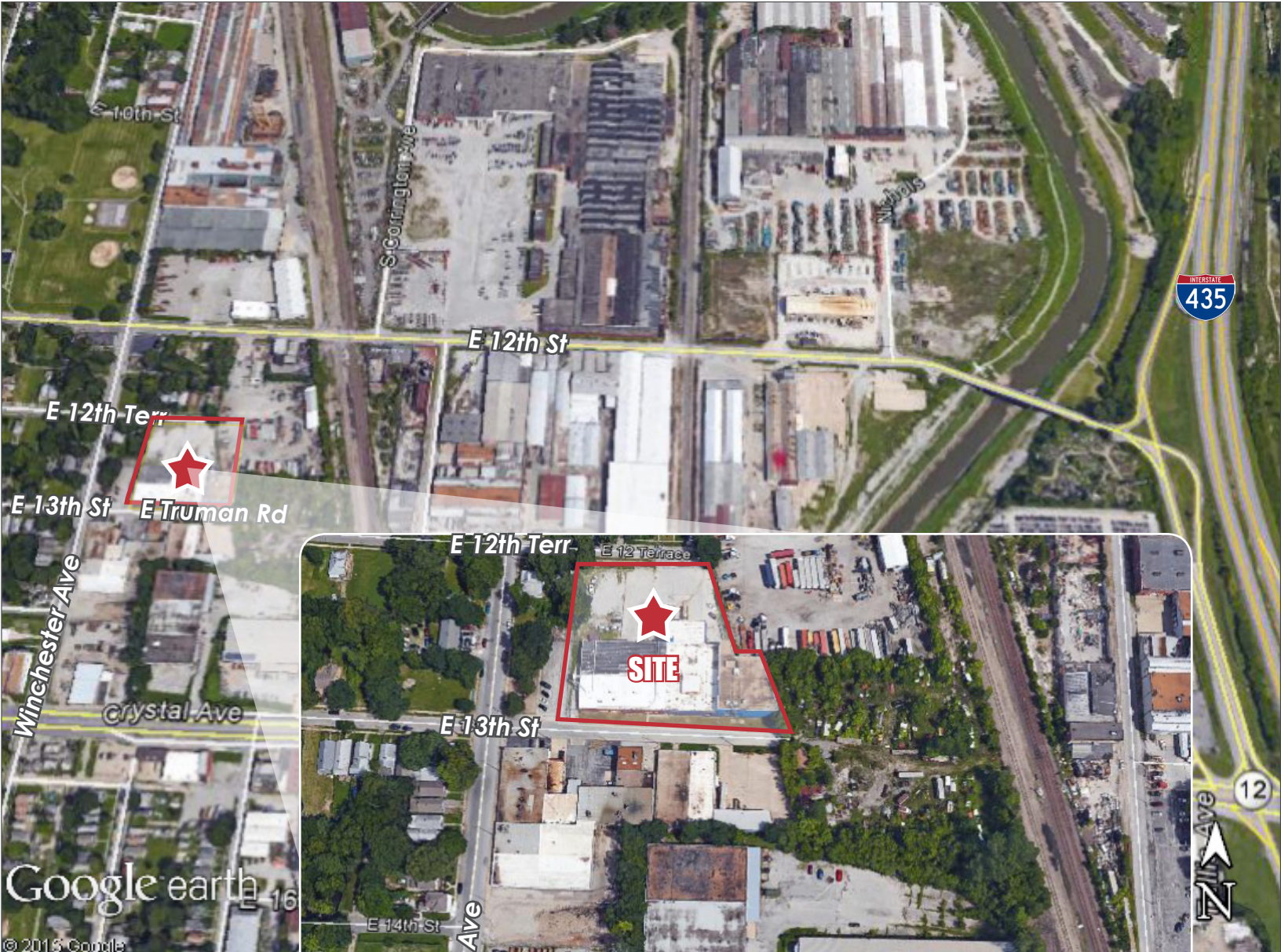


John Sweeney, CCIM
Office: 913-945-3718
Mobile 913-461-6326
Email: john@reececommercial.com

Matt Watkins
Office: 913-266-5424
Mobile 816-908-9447
Email: matt@reececommercial.com

AERIAL

7023 E 12TH TERR, KANSAS CITY, MO



John Sweeney, CCIM
Office: 913-945-3718
Mobile 913-461-6326
Email: john@reececommercial.com

Matt Watkins
Office: 913-266-5424
Mobile 816-908-9447
Email: matt@reececommercial.com