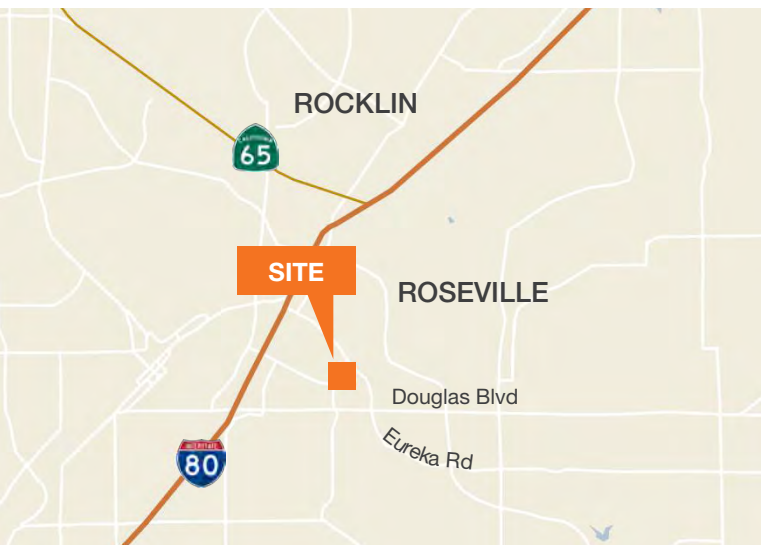


**FOR LEASE**

# Eureka Corporate Center

1532 Eureka Road, Roseville, CA 95661



## ±715 - 3,550 SF AVAILABLE FOR LEASE

Two move-in ready office suites (can be combined)

Rental rate: \$1.90/SF, Full Service

Zoning: BP (Business Professional)

4 windowed offices, break area, storage room, extensive window line on all 3 sides, & prominent signage

Walking distance to numerous restaurants, and other retail

Approximately 3 minutes (1 mile) from the Eureka Road I-80 on/off-ramp

## CONTACT

**Jon R. Walker**

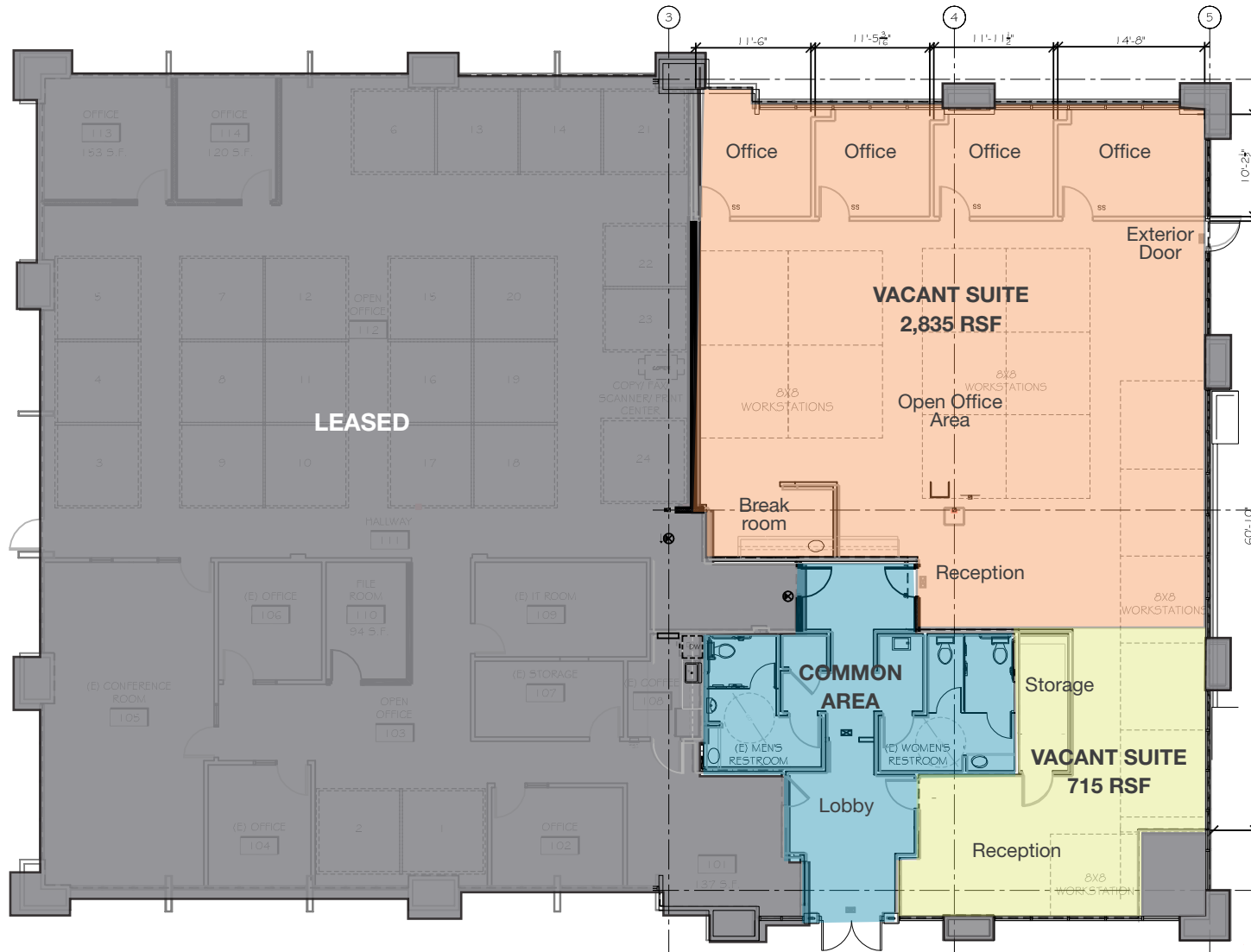
Partner & Senior Vice President  
916.751.3631 | Lic #01204666  
jwalker@kiddermathews.com



# FOR LEASE

# 1532 Eureka Road

## BUILDING FLOOR PLAN - FEATURING 16 8X8 WORKSTATIONS (NOT INCLUDED)



## CONTACT

**Jon R. Walker**  
Partner & Senior Vice President  
916.751.3631 | Lic #01204666  
jwalker@kiddermathews.com



# FOR LEASE

# 1532 Eureka Road

## BUILDING PHOTOS



**LOBBY REMODEL COMING THIS FALL**

## CONTACT

**Jon R. Walker**

Partner & Senior Vice President

916.751.3631 | Lic #01204666

[jwalker@kiddermathews.com](mailto:jwalker@kiddermathews.com)



# FOR LEASE

# 1532 Eureka Road

## WALKING DISTANCE AMENITIES



## CONTACT

**Jon R. Walker**  
Partner & Senior Vice President  
916.751.3631 | Lic #01204666  
jwalker@kiddermathews.com



# FOR LEASE

# 1532 Eureka Road

Don't include

## LOCATION AERIAL



## CONTACT

**Jon R. Walker**  
Partner & Senior Vice President  
916.751.3631 | Lic #01204666  
jwalker@kiddermathews.com

