

GARDEN OFFICE BUILDING FOR LEASE



222 E. GLENARM STREET, PASADENA, CALIFORNIA

FOR LEASE

Available Space: Approximately 1,783 rentable sq. ft. on the second (2nd) floor. See area outlined in yellow on the floor plan.

Lease Rate: \$2.00/rentable sq. ft., MG.
Tenant pays for its own prorata share of utilities, common area janitorial and trash.
Tenant to pay its own janitorial service.

Occupancy: Immediately.

Parking: Four (4) reserved parking spaces free of charge. Non-posted all day street parking along Glenarm.

Amenities:

- * Floor plan includes reception area and two private offices, storage room, conference room, plus open area for work stations. Lots of windows, natural light and large windows that face north towards the mountains.

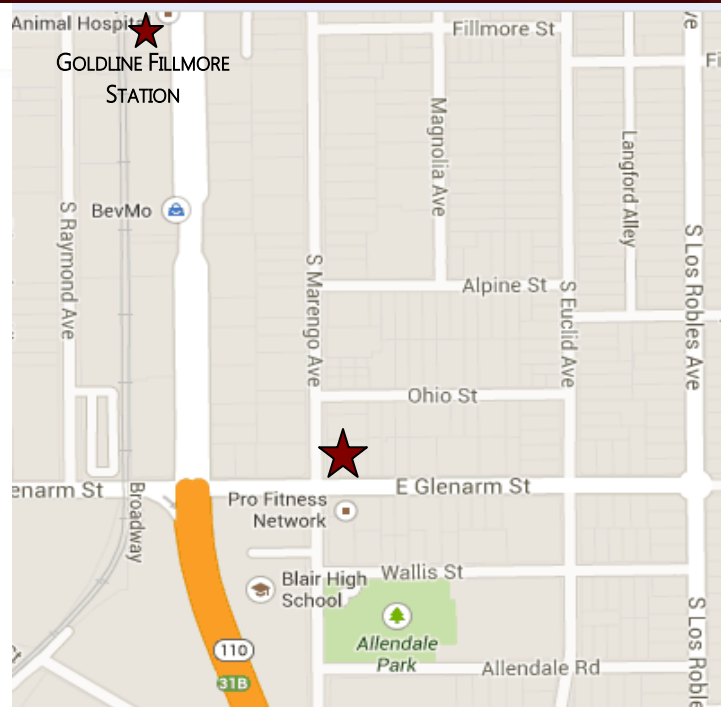
- * Covered parking available.

- * Close proximity to 110 & 210 freeways.

- * Gold Line stop on Fillmore.

- * Beautiful Common Area patio for Tenants use.

Please call for more information and a tour of the building.



For Further Information, Contact:

Carole Walker
cwalker@redstonecre.com
License No. 01525534

Dan Alle
dalle@redstonecre.com
License No. 01017941

(626) 795-2255

Redstone
COMMERCIAL REAL ESTATE

All information contained herein is from sources deemed reliable but has not been verified and is submitted without any warranty or representation, expressed or implied, as to its accuracy, and Redstone Commercial Real Estate, License #01525534, assumes no liability for errors or omissions of any kind, change of price, rental or other conditions, including, without limitation, prior sale, lease or financing or withdrawal without notice. This presentation is for information only and under no circumstances whatsoever is to be deemed a contract, note, memorandum or any other form of binding commitment.

Redstone

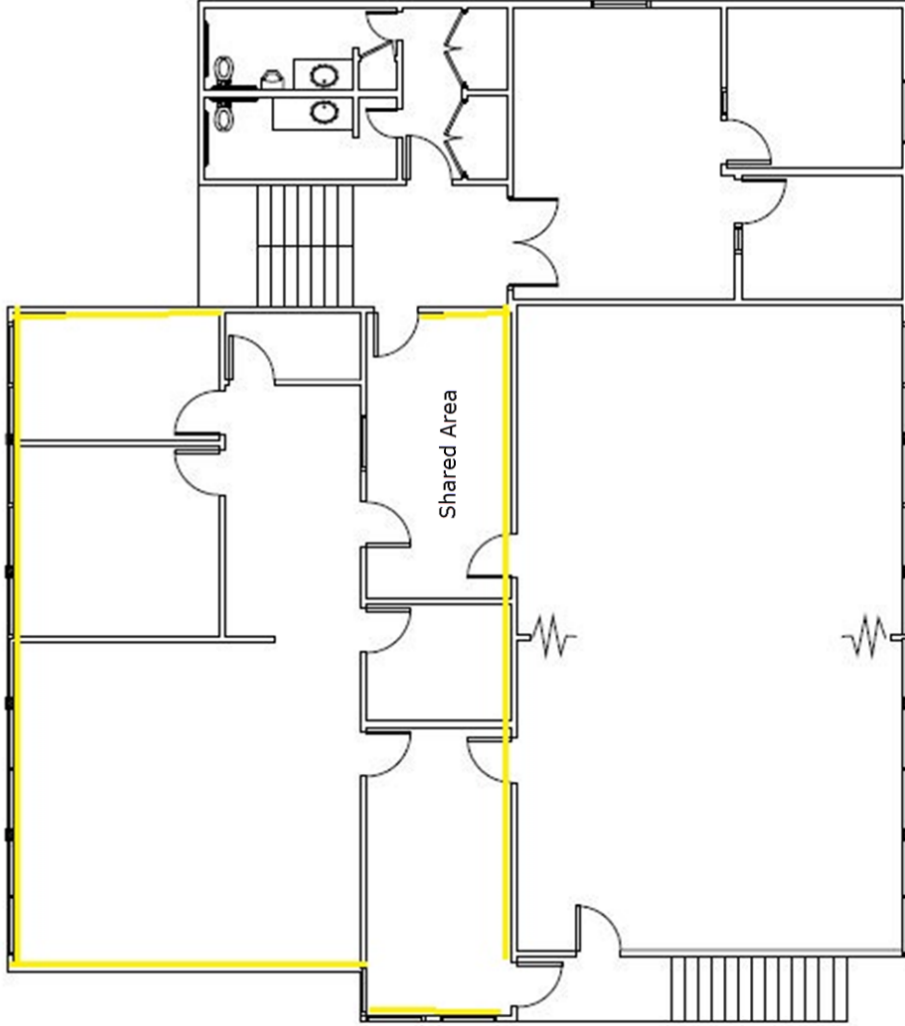
COMMERCIAL REAL ESTATE



www.redstonecre.com

301 N. Lake Ave Suite 1000 Pasadena CA 91101

Tel. (626) 795-2255 | Fax (626) 795-2251



AS-BUILT PLAN
222 E. GLENARM
PASADENA, CA

9.9.2014

3/32" = 1'-0"

Creative Energy
architecture and interiors
241 East Colorado Boulevard, Suite 203
Pasadena, California 91101
phone 626.304.0505 fax 626.304.0715

