

MKB BUILDING

12735 Willows Road NE | Kirkland, WA 98034



FEATURES

- » Available Space:
2,800 RSF Office
First (1st) Floor
- » Rental Rate:
\$17.00/SF, Gross
- » Flexible deal terms
- » Efficient floor plan
- » New carpet & paint in space; "move-in ready"
- » Local landlord
- » Easy access to I-405



For further information or to schedule a tour, please contact leasing agents:

TYLER SLONE | 425.274.4281 | slone@broderickgroup.com

CHRIS LANGER | 425.646.5228 | lander@broderickgroup.com

The information contained herein has been given to us by the owner or sources that we deem reliable. We have no reason to doubt its accuracy, but we do not guarantee it. Prospective tenants should carefully verify all information contained herein.

BRODERICK
• GROUP •

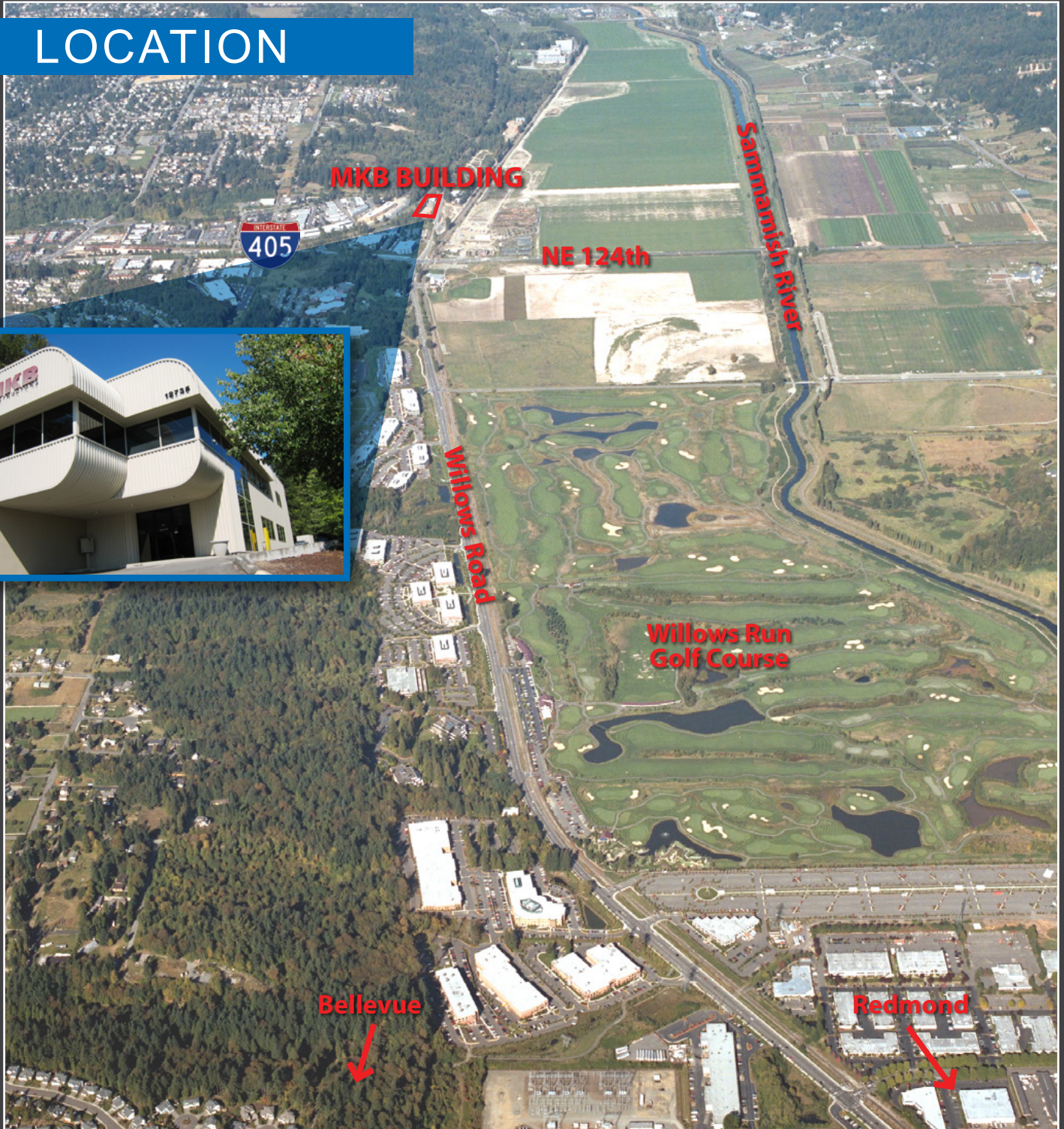
Broderick Group
10500 NE 8th Street, Suite 900
Bellevue, Washington 98004
o: (425) 646-3444

broderickgroup.com

MKB BUILDING

12735 Willows Road NE | Kirkland, WA 98034

LOCATION



BRODERICK
GROUP

Broderick Group
10500 NE 8th Street, Suite 900
Bellevue, Washington 98004
o: (425) 646-3444

For further information or to schedule a tour, please contact leasing agents:

TYLER SLONE | 425.274.4281 | slone@broderickgroup.com

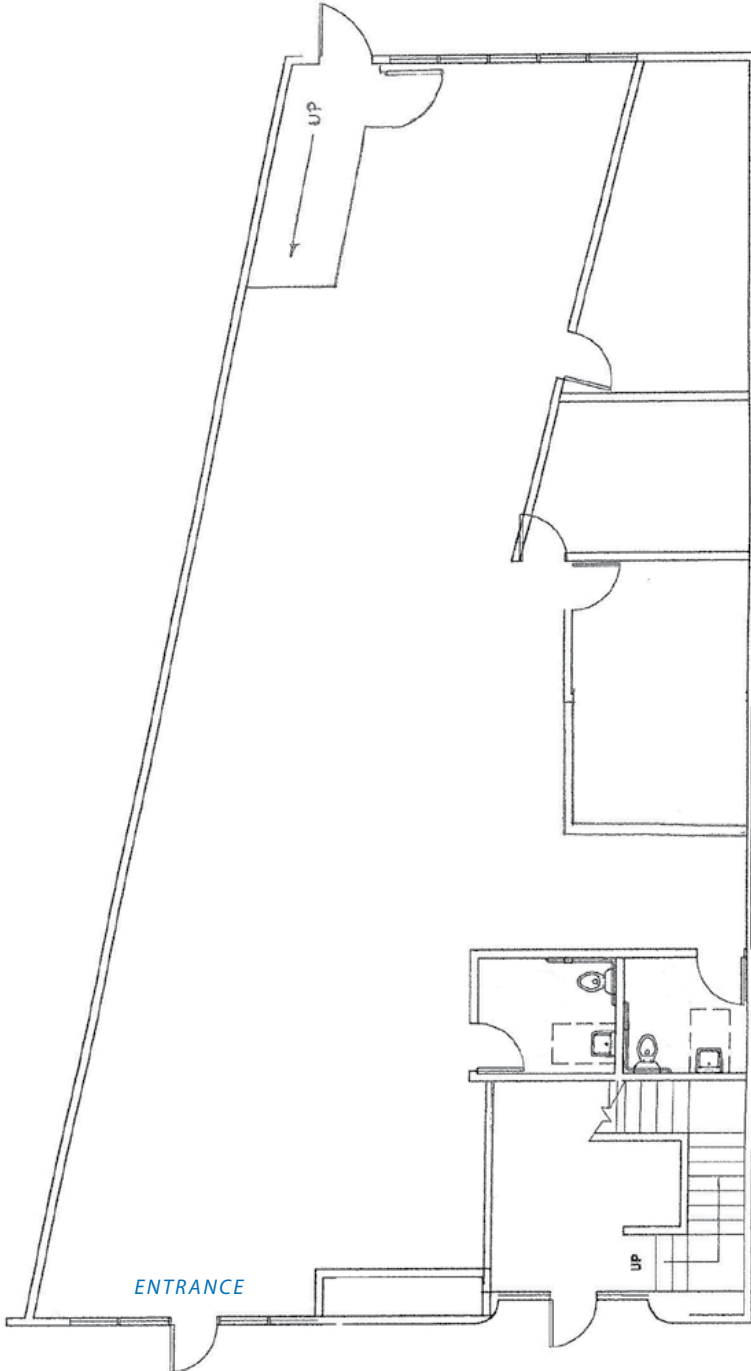
CHRIS LANGER | 425.646.5228 | langner@broderickgroup.com

broderickgroup.com

MKB BUILDING

12735 Willows Road NE | Kirkland, WA 98034

FLOOR PLAN



AVAILABLE SPACE

FIRST FLOOR

2,800 RSF OFFICE

- » Flexible deal terms
- » Efficient floor plan
- » New carpet & paint in space
- » In "move-in ready" condition
- » Local landlord
- » Easy access to I-405

BRODERICK
GROUP

Broderick Group
10500 NE 8th Street, Suite 900
Bellevue, Washington 98004
o: (425) 646-3444

broderickgroup.com

For further information or to schedule a tour, please contact leasing agents:

TYLER SLONE | 425.274.4281 | slone@broderickgroup.com

CHRIS LANGER | 425.646.5228 | langner@broderickgroup.com