

DOBSON BAY MEDICAL CENTER

2150 S Dobson Rd **Ste 4** | Mesa, AZ 85202

FOR LEASE: \$17 NNN



Medical Office with a Beautiful Lakefront View



Executive Contacts:

Tyson Breinholt

D 480.966.7513

M 602.315.7131

tbreinholt@cpiaz.com

DOBSON BAY MEDICAL CENTER

2150 S Dobson Rd **Ste 4** | Mesa, AZ 85202

FOR LEASE: \$17 NNN



DOBSON BAY

- Lakefront location in Dobson Ranch
- Part of a planned community
- High traffic volume
- Just south of Baseline Road
- Parking ratio of 5.20/1,000 RSF



COMMERCIAL PROPERTIES INC.

Locally Owned. Globally Connected. CRFAC International

Tyson Breinholt

D 480.966.7513

M 602.315.7131

tbreinholt@cpi.az.com



The information contained herein has been obtained from various sources. We have no reason to doubt its accuracy; however, J & J Commercial Properties, Inc. has not verified such information and makes no guarantee, warranty or representation about such information. The prospective buyer or lessee should independently verify all dimensions, specifications, floor plans, and all information prior to the lease or purchase of the property. All offerings are subject to prior sale, lease, or withdrawal from the market without prior notice.
Effective 06 12 19

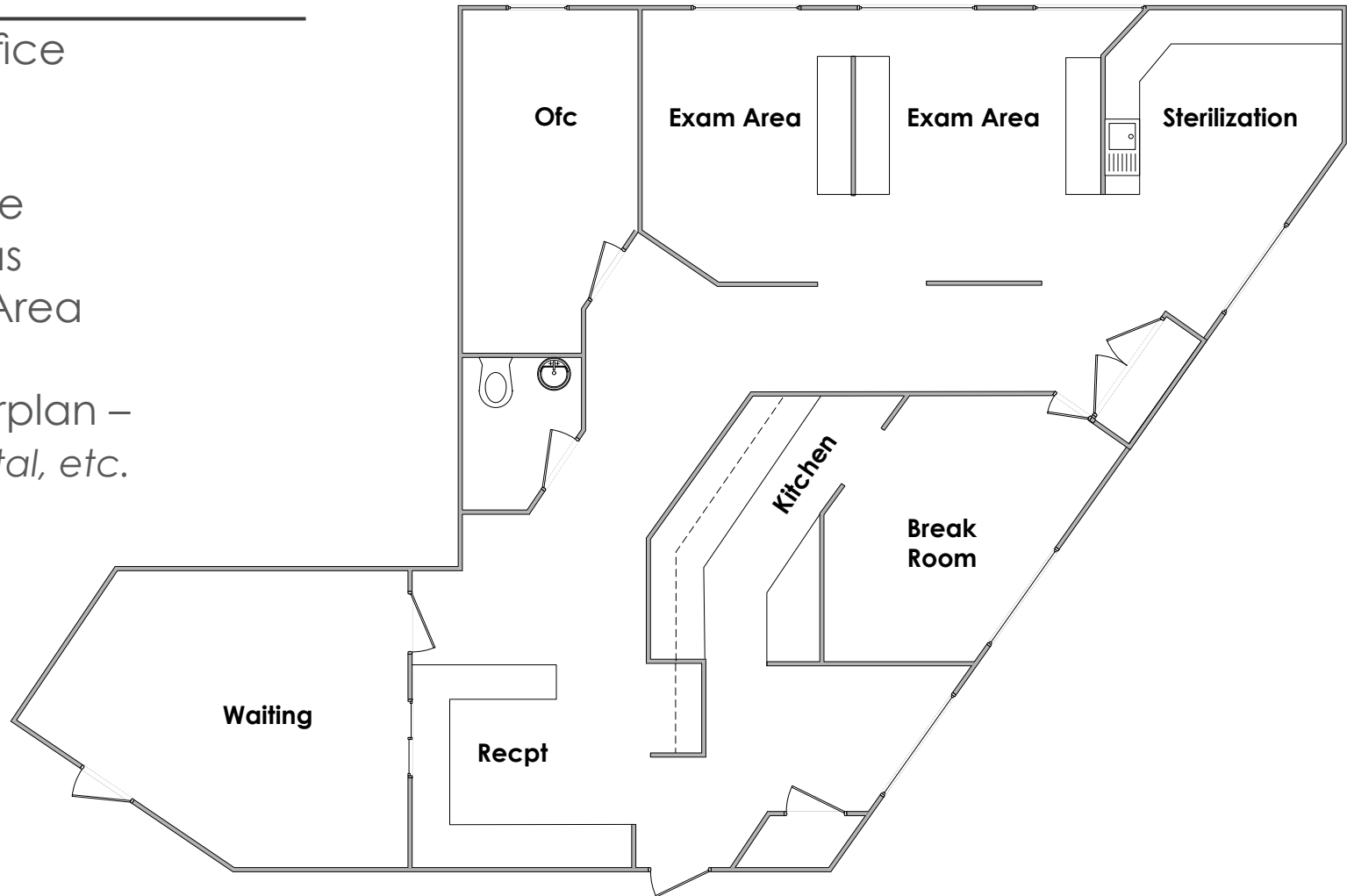
DOBSON BAY MEDICAL CENTER

2150 S Dobson Rd **Ste 4** | Mesa, AZ 85202

FOR LEASE: \$17 NNN

Suite 4

- ±1,304 SF Office
- 100% AC'd
- Reception
- Private Office
- 2 Exam Areas
- Sterilization Area
- Restroom
- Flexible Floorplan –
Medical, Dental, etc.



Executive Contacts:

Tyson Breinholt

D 480.966.7513

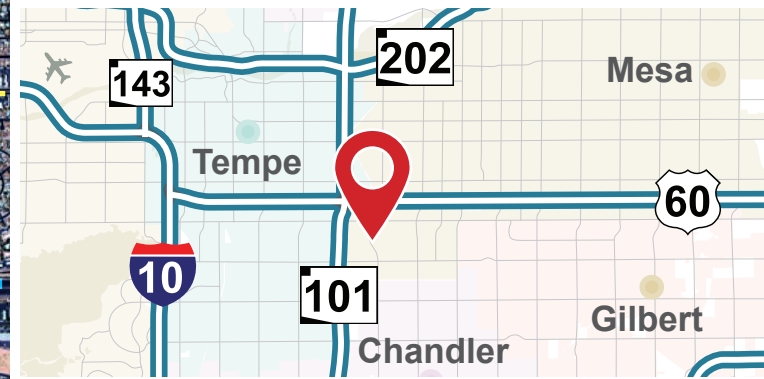
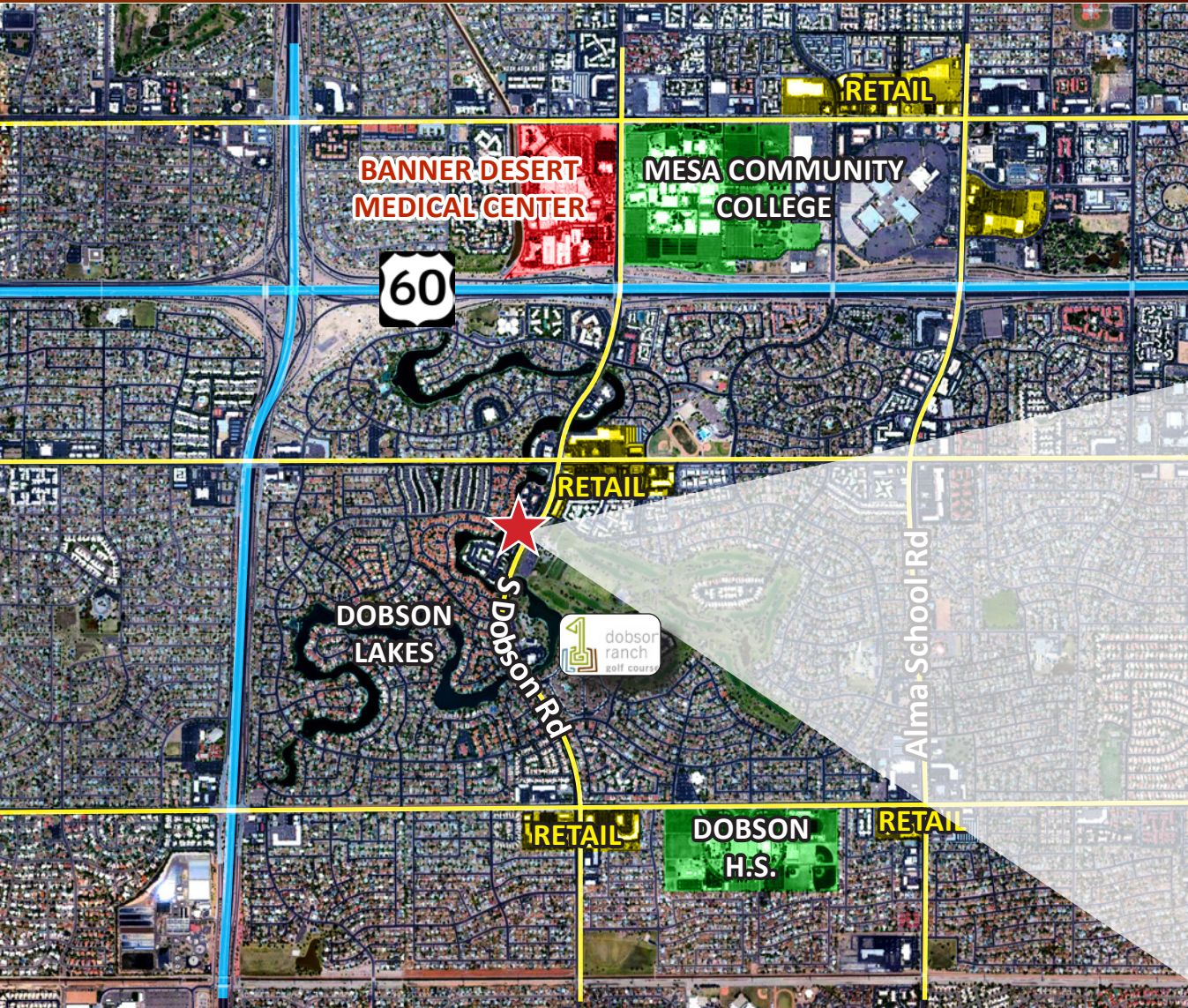
M 602.315.7131

tbreinholt@cpiaz.com

DOBSON BAY MEDICAL CENTER

2150 S Dobson Rd **Ste 3** | Mesa, AZ 85202

FOR LEASE: \$17 NNN



Executive Contacts:

Tyson Breinholt

D 480.966.7513

M 602.315.7131

tbreinholt@cpiaz.com