



1100  
SECOND  
AVENUE

18 FT FRONTAGE

20 FT FRONTAGE

SPACE A

SPACE B

1,537 TO 1,852 SF PRIME NON-VENTED FOOD OPPORTUNITIES  
ON EAST SIDE OF SECOND AVENUE BETWEEN E. 57TH AND 58TH STREETS



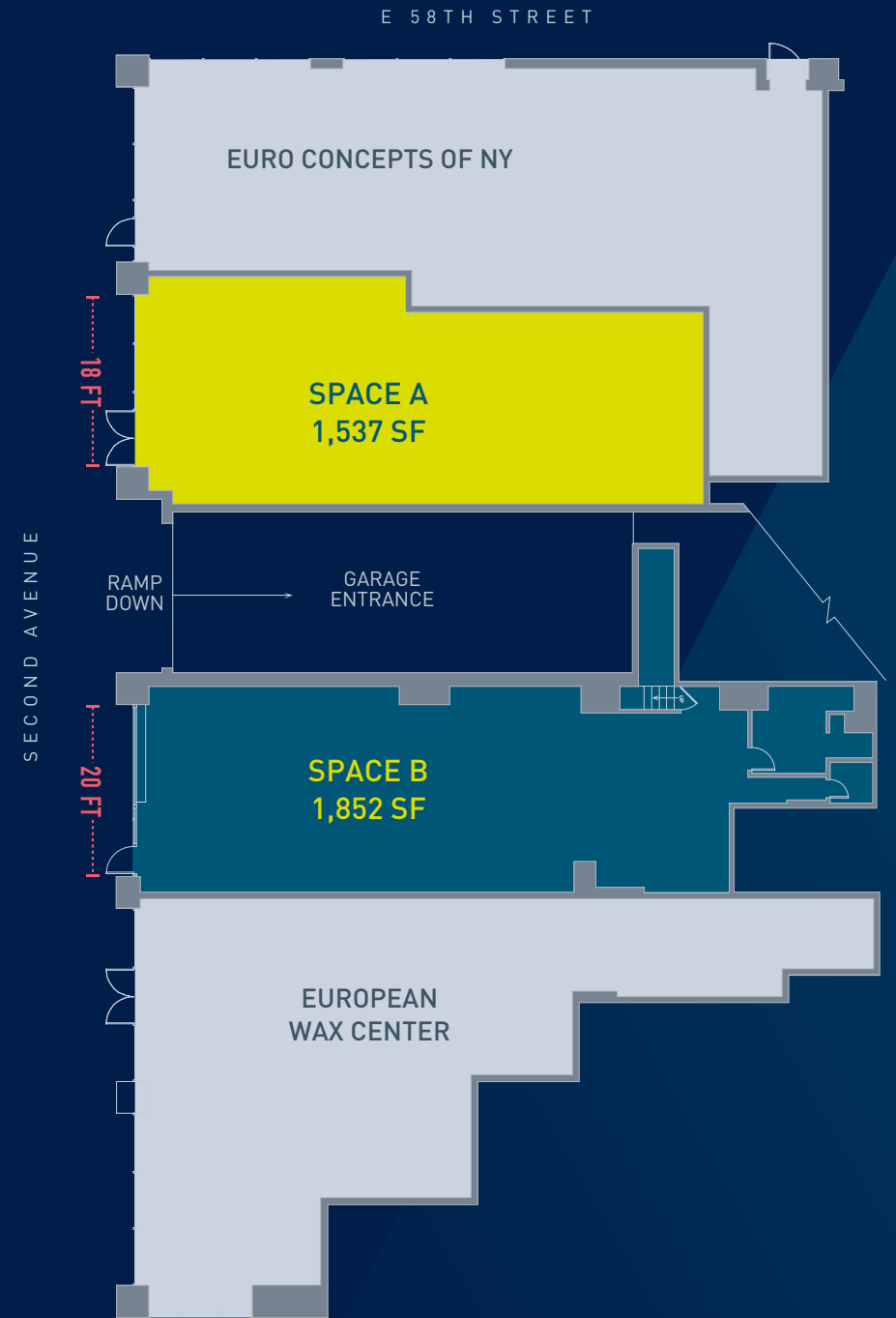
SPACE SPECS

	SPACE A	SPACE B
Space:	1,537 SF	1,852 SF
Frontage:	18 FT	20 FT
Ceiling Ht:	14 FT	14 FT
Possession:	Immediate	
Lease Type:	Direct	

COMMENTS

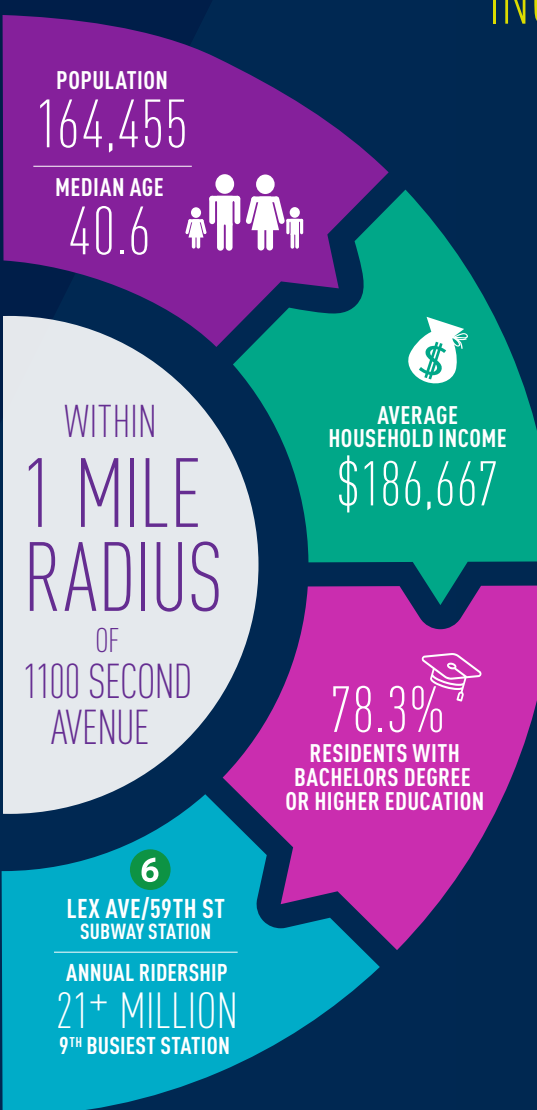
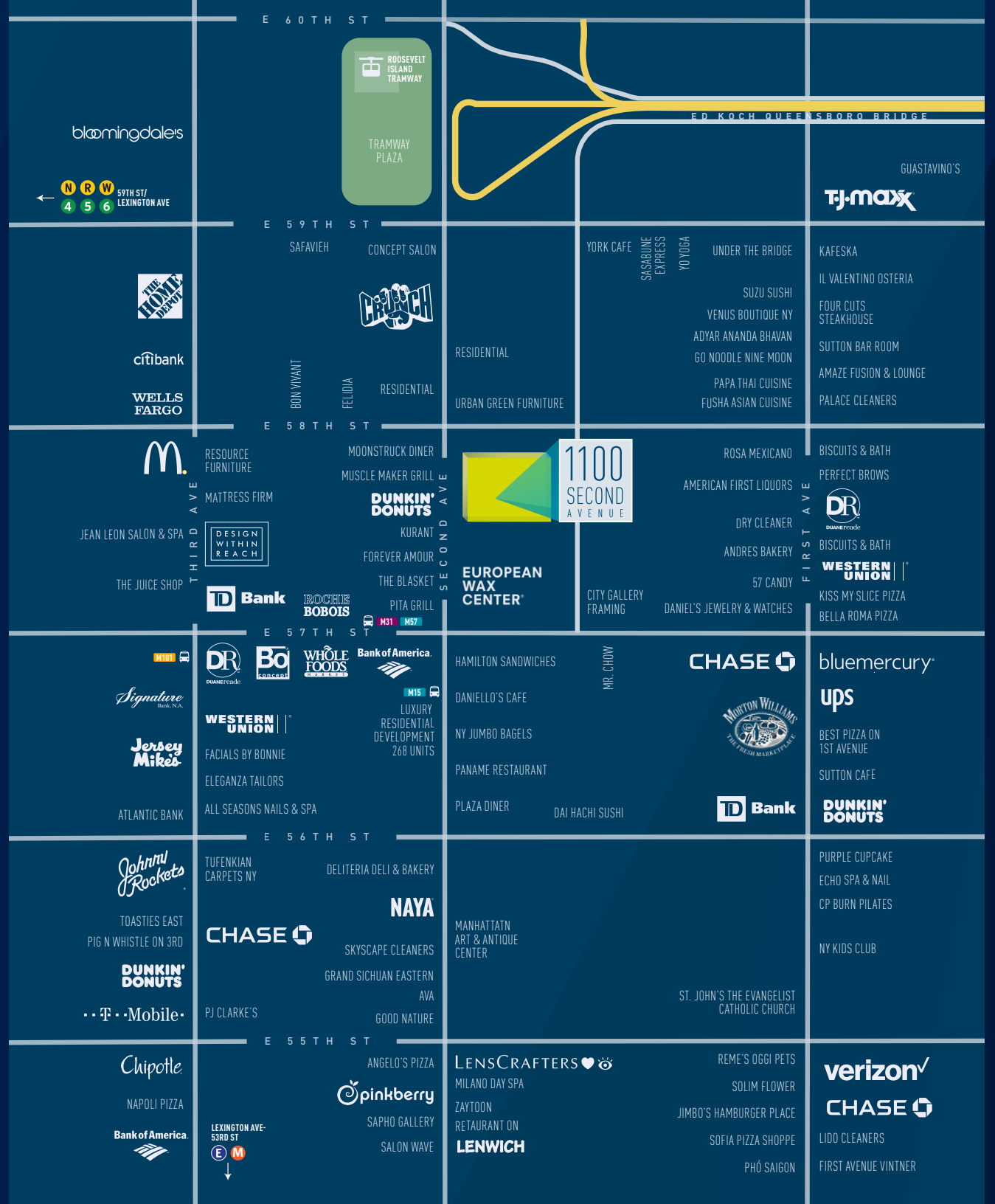
- Prime neighborhood amenity space at the center of a dense residential market
- Located at the base of the Excelsior featuring 374 units
- Steps from Whole Foods and across the street from the new Aalto 57 luxury residential building with 268 units
- Excellent proximity to transportation via the 4, 5, 6, N, Q, R, Roosevelt Island Tram and the FDR Drive
- All non-vented food uses accepted

FLOORPLAN



# NEIGHBORING RETAILERS INCLUDE:

- WHOLE FOODS
- EUROPEAN WAX CENTER
- CRUNCH FITNESS
- EQUINOX
- T.J. MAXX
- BED BATH & BEYOND
- HOME DEPOT
- CB2
- EURO CONCEPTS
- SOHOCONCEPT
- DUANE READE
- LENWICH
- MR. CHOW
- UMI SUSHI
- NAYA
- PINKBERRY
- PITA GRILL
- MOONSTRUCK DINER
- NY JUMBO BAGELS



STEVEN SOUTENDIJK

212 713 6845

[STEVEN.SOUTENDIJK@CUSHWAKE.COM](mailto:STEVEN.SOUTENDIJK@CUSHWAKE.COM)

SEAN MORAN

212 841 7668

[SEAN.MORAN@CUSHWAKE.COM](mailto:SEAN.MORAN@CUSHWAKE.COM)

MOLLY SANDZA

212 841 7955

[MOLLY.SANDZA@CUSHWAKE.COM](mailto:MOLLY.SANDZA@CUSHWAKE.COM)

PATRICK O'ROURKE

212 660 7777

[PATRICK.OROURKE@CUSHWAKE.COM](mailto:PATRICK.OROURKE@CUSHWAKE.COM)

1100  
SECOND  
A V E N U E

