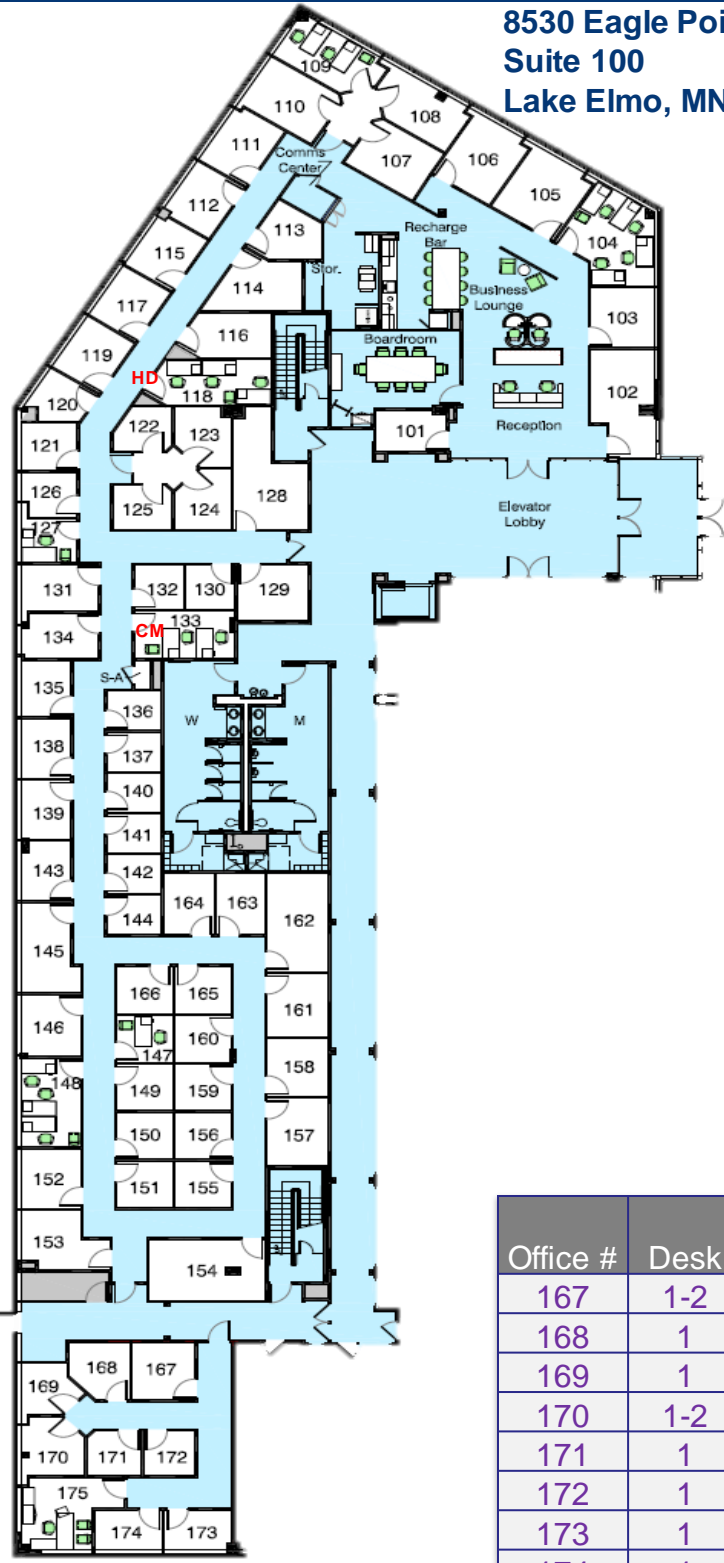


8530 Eagle Point Blvd.
Suite 100
Lake Elmo, MN 55042



Meeting Rooms	Hourly	Full Day
St. Croix (1-8 occupants)	\$60	\$240
Community Room (1-4 occupants)	\$35	\$140
Day Office (1-3)	\$23.75	\$95

Office #	Desk	Sq. Ft.	1 Month	6 Month	12 Month	24 Month
167	1-2	88	611	580	549	518
168	1	72	433	411	389	367
169	1	60	622	590	559	528
170	1-2	81	822	780	739	698
171	1	54	433	411	389	367
172	1	54	433	411	389	367
173	1	61	622	590	559	528
174	1	62	622	590	559	528
175	1-3	143	1,478	1,403	1,329	1,255
Suite Total	1-13	675 + Hallway	6,076	5,766	5,461	5,156