

FOR LEASE

502 Centennial Boulevard | Voorhees, New Jersey



PROPERTY HIGHLIGHTS:

- 48,027 SF, one-story medical office building
- Fully built out, high end medical office suites including exam rooms with plumbing and cabinetry, doctor consultation offices and a large waiting room and administrative areas
- Suite 2: 5,421 SF
- Suite 7: 4,750 SF – **FULLY FURNISHED!**
- Suite 8: 1,429 SF
- Rental Rate: \$14.00/SF, NNN
NNN = approximately \$10.04/SF plus utilities & janitorial

For information, please contact:

ANNE KLEIN
EXECUTIVE MANAGING
DIRECTOR
856.334.2110
AKLEIN@NGKF.COM



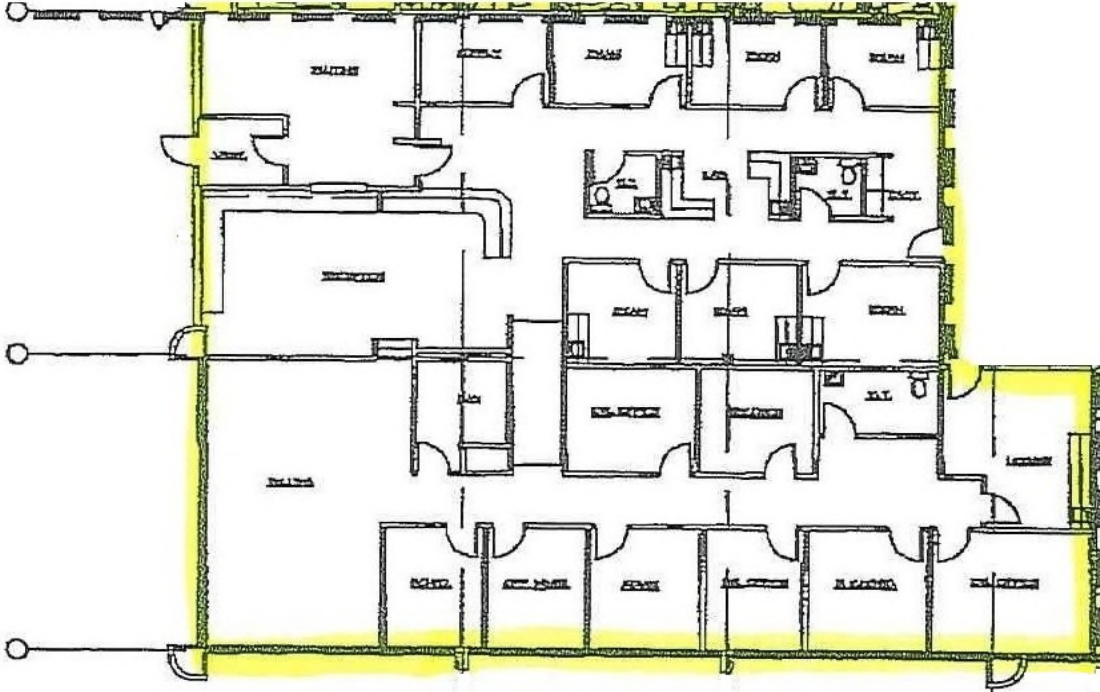
ngkf.com

40 Lake Center Executive Park, 401 Route 73 North, Suite 120, Marlton, NJ 08053 T 856.334.2100

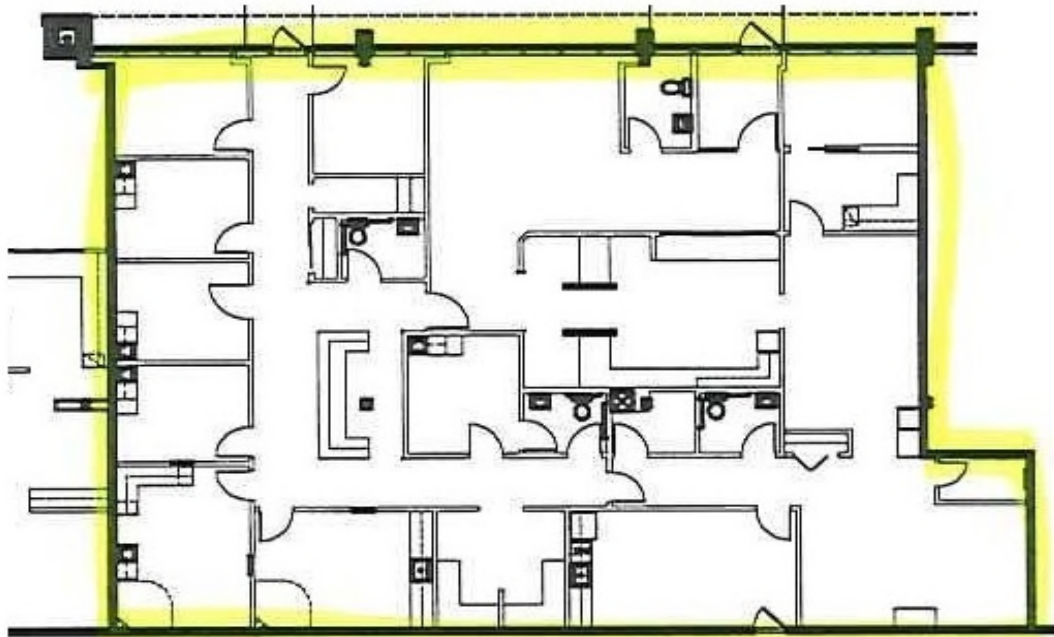
THE INFORMATION CONTAINED HEREIN HAS BEEN OBTAINED FROM SOURCES DEEMED RELIABLE BUT HAS NOT BEEN VERIFIED AND NO GUARANTEE, WARRANTY OR REPRESENTATION, EITHER EXPRESS OR IMPLIED, IS MADE WITH RESPECT TO SUCH INFORMATION. TERMS OF SALE OR LEASE AND AVAILABILITY ARE SUBJECT TO CHANGE OR WITHDRAWAL WITHOUT NOTICE.

FOR LEASE

502 Centennial Boulevard, Voorhees, NJ



SUITE 2: 5,421 SF



SUITE 7: 4,750 SF